



Edition

09/2024

## RECYCLER GUIDE

# LOGO!

Reference product: 6ED1052-1MD08-0BA2

This document covers all the variants in the domain 6ED1052-1MD08-0BA2, 6ED1052-1FB08-0BA2, 6ED1052-1HB08-0BA2, 6ED1052-1CC08-0BA2, 6ED1052-2FB08-0BA2, 6ED1052-2HB08-0BA2, 6ED1052-2MD08-0BA2, 6ED1052-2CC08-0BA2, 6ED1055-1NB10-0BA2, 6ED1055-1FB10-0BA2, 6ED1055-1CB10-0BA2, 6ED1055-1MD00-0BA2, 6ED1055-1MA00-0BA2, 6ED1055-1MM00-0BA2, 6ED1055-1CB00-0BA2, 6ED1055-1HB00-0BA2, 6ED1055-1MB00-0BA2, 6ED1055-1FB00-0BA2 ab.

## LOGO! Recycler Guide for LOGO!

Product Information

About this guide

1

Safety instructions

2

Recommended tool

3

Disassembly instructions

4

Explanation of substances  
and components

5

Received material fractions

6




Disclaimer of liability

7

## Legal information

### Warning notice system

This manual contains notices you have to observe in order to ensure your personal safety, as well as to prevent damage to property. The notices referring to your personal safety are highlighted in the manual by a safety alert symbol, notices referring only to property damage have no safety alert symbol. These notices shown below are graded according to the degree of danger.

 <b>DANGER</b>
indicates that death or severe personal injury <b>will</b> result if proper precautions are not taken.
 <b>WARNING</b>
indicates that death or severe personal injury <b>may</b> result if proper precautions are not taken.
 <b>CAUTION</b>
indicates that minor personal injury can result if proper precautions are not taken.
<b>NOTICE</b>
indicates that property damage can result if proper precautions are not taken.


If more than one degree of danger is present, the warning notice representing the highest degree of danger will be used. A notice warning of injury to persons with a safety alert symbol may also include a warning relating to property damage.

### Qualified Personnel

The product/system described in this documentation may be operated only by **personnel qualified** for the specific task in accordance with the relevant documentation, in particular its warning notices and safety instructions. Qualified personnel are those who, based on their training and experience, are capable of identifying risks and avoiding potential hazards when working with these products/systems.

### Proper use of Siemens products

Note the following:

 <b>WARNING</b>
Siemens products may only be used for the applications described in the catalog and in the relevant technical documentation. If products and components from other manufacturers are used, these must be recommended or approved by Siemens. Proper transport, storage, installation, assembly, commissioning, operation and maintenance are required to ensure that the products operate safely and without any problems. The permissible ambient conditions must be complied with. The information in the relevant documentation must be observed.

### Trademarks

All names identified by ® are registered trademarks of Siemens Aktiengesellschaft. The remaining trademarks in this publication may be trademarks whose use by third parties for their own purposes could violate the rights of the owner.

### Disclaimer of Liability

We have reviewed the contents of this publication to ensure consistency with the hardware and software described. Since variance cannot be precluded entirely, we cannot guarantee full consistency. However, the information in this publication is reviewed regularly and any necessary corrections are included in subsequent editions.

# Table of contents

1	About this guide .....	4
2	Safety instructions .....	5
3	Recommended tool.....	6
4	Disassembly instructions .....	7
5	Explanation of substances and components .....	15
6	Received material fractions .....	16
7	Disclaimer of liability .....	17

## About this guide

In order to conserve important resources, we work on reducing the materials we use and supporting the recycling economy right from the product design stage. An important way to achieve this goal is the resource recovery of electronic products at the end of their service life.

The Siemens Recycler Guides provide recyclers of electronic products with instructions on how to disassemble products safely in order to maximize resource recycling. The Recycler Guides provide step-by-step disassembly instructions and material composition information to help recyclers direct specific materials to specialized recyclers.

Disassembly may only be carried out by specialists trained in the recycling of electronic devices. The recycler is responsible for independently evaluating and ensuring compliance with all applicable environmental, health and safety regulations. This includes, among other things, the legal requirements in the area of management, handling, shipping and disposal as well as applicable laws to ensure the health and safety of all employees involved.

If you have any questions or feedback regarding this Recycler Guide, please use this address: [recycling@siemens.com](mailto:recycling@siemens.com)

## Safety instructions

The recycler is responsible for independently evaluating all activities of its employees in performing or supporting the work and ensuring compliance with all applicable legal requirements. This includes, but is not limited to, laws regarding the health and safety of all employees performing or assisting in that work. The recycler is also responsible for assessing the workplace and ensuring that the area in which the work is carried out meets all ergonomic requirements to ensure the protection of its employees.

### Danger notice (DIN EN ISO 7010)



Warning against hand injuries



Warning against pointed/sharp objects

Wear personal protective equipment throughout the recycling process.



Wear hand protection



Wear a mask



Wear eye protection



Wear foot protection



Wear protective clothing

## Recommended tool

For the disassembly of the product, we recommend using the following tool:

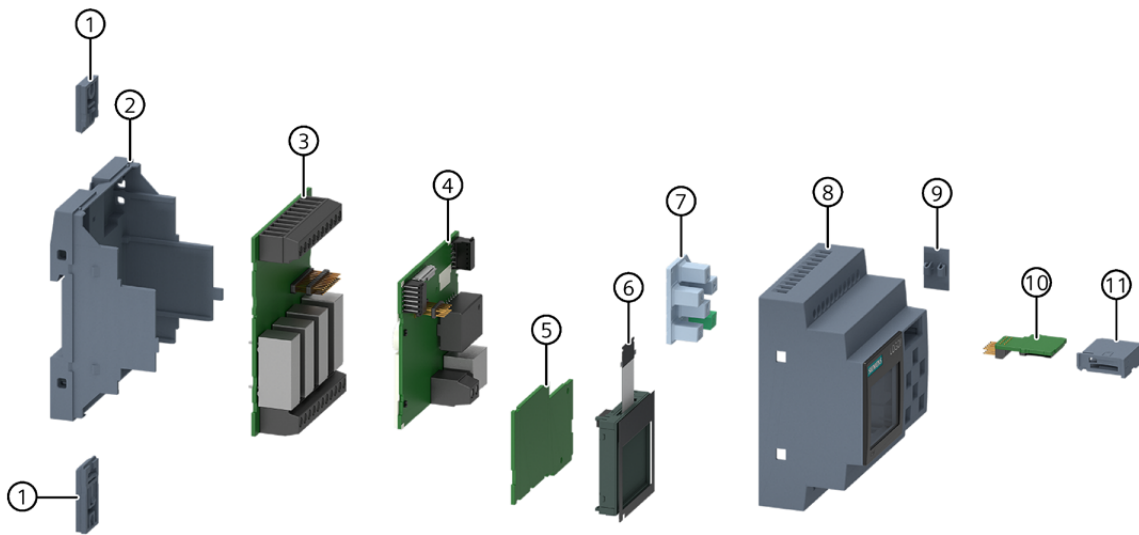


Slotted screwdriver

## Disassembly instructions

The following guide provides detailed information on how to disassemble the product at the end of its service life and on what materials you can collect and recycle. In doing so, you support the recycling economy.

### Components of the product



Position	Part	Material	Disassembly step
1	Mounting slides	POM	Step 7
2	Rear enclosure	Polycarbonate	Step 6
3	Assembled PCB	Electronics	Step 8
4	Assembled PCB	Electronics	Step 8
5	Assembled PCB	Electronics	Step 8
6	LCD	Electronics	Step 9
7	Keypad	Silicone rubber	Step 5
8	Front enclosure	Polycarbonate	Step 4
9	Connector cap	Polycarbonate	Step 3
10	Assembled PCB of SD card	Electronics	Step 2
11	SD card holder	Polycarbonate	Step 1

## Product groups

This Recycler Guide covers three product groups of the LOGO! product family. The devices in these three product groups differ in terms of their features, but are similar in terms of their design. Follow steps 1 to 9 of this guide for the disassembly. Deviations that are specific to a particular product group are explicitly mentioned in the text.

### Product group 1

LOGO! Basic (design with display)

Designation	Article number
LOGO! 8.4 12/24RCE	6ED1052-1MD08-0BA2
LOGO! 8.4 230RCE	6ED1052-1FB08-0BA2
LOGO! 8.4 24CE	6ED1052-1CC08-0BA2
LOGO! 8.4 24RCE	6ED1052-1HB08-0BA2

### Product group 2

LOGO! Pure (design without display)

Designation	Article number
LOGO! 8.4 12/24RCEo	6ED1052-2MD08-0BA2
LOGO! 8.4 230RCEo	6ED1052-2FB08-0BA2
LOGO! 8.4 24CEo	6ED1052-2CC08-0BA2
LOGO! 8.4 24RCEo	6ED1052-2HB08-0BA2

### Product group 3

Expansion modules

Designation	Article number
LOGO! AM2	6ED1055-1MA00-0BA2
LOGO! AM2 AQ	6ED1055-1MM00-0BA2
LOGO! AM2 RTD	6ED1055-1MD00-0BA2
LOGO! DM16 230R	6ED1055-1FB10-0BA2
LOGO! DM16 24	6ED1055-1CB10-0BA2
LOGO! DM16 24R	6ED1055-1NB10-0BA2
LOGO! DM8 12/24R	6ED1055-1MB00-0BA2
LOGO! DM8 230R	6ED1055-1FB00-0BA2
LOGO! DM8 24	6ED1055-1CB00-0BA2
LOGO! DM8 24R	6ED1055-1HB00-0BA2

## Dismantling the product

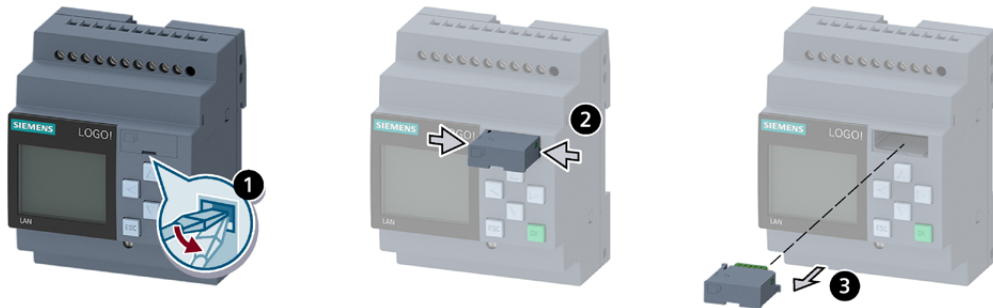
Follow these steps for disassembly:

## 1. Disassembly of the SD card holder

### Note

This step is not required for product group 3.

1. Insert a slotted screwdriver into the groove on the front side of the SD card holder. Pull the SD card holder partially out of the slot with a prying action.
2. Press the snap fits on the sides of the SD card holder inwards together.
3. Pull the SD card holder out of the slot.



## 2. Disassembly of the assembled PCB of the SD card

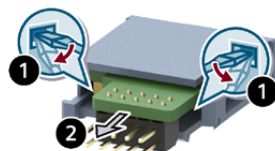
### Note

This step is not required for product group 3.

1. Push the slotted screwdriver from the inside between the assembled PCB of the SD card and the SD card holder. Loosen the interlock on one side with a prying action while holding the slotted screwdriver inside. With another slotted screwdriver, loosen the interlock on the other side.
2. Remove the assembled PCB of the SD card from the SD card holder.

### Note

Non-destructive disassembly is not possible.



### 3. Disassembly of the connector cap

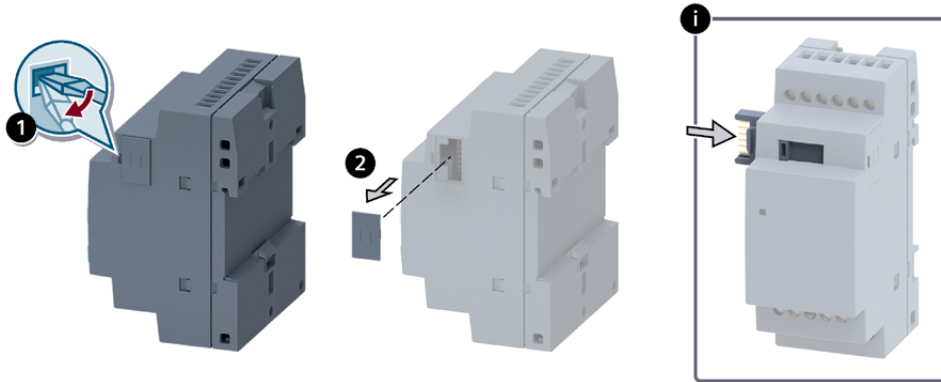
1. Insert a slotted screwdriver into the groove on the left side of the connector cap.
2. Remove the connector cap.

---

#### Note

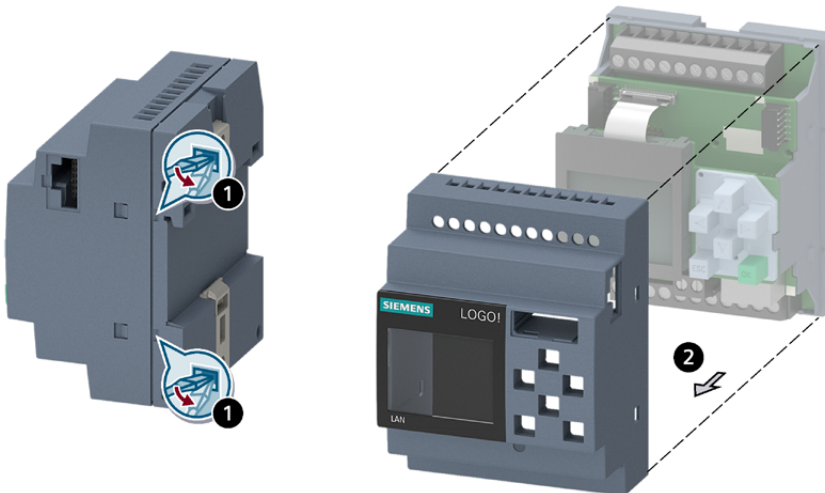
For product group 3, press the projecting slides into the enclosure.

---



### 4. Removal of the front enclosure

1. Place the slotted screwdriver at the spot where the front enclosure touches the rear enclosure at the height of the snap lock. To loosen the snap lock, pry open the edge of the front enclosure. Pry the front enclosure open at 2 places on the right and 2 on the left.
2. Separate the front enclosure including the lens and plastic fiber-optic conductor from the rear enclosure.



## 5. Disassembly of the keypad

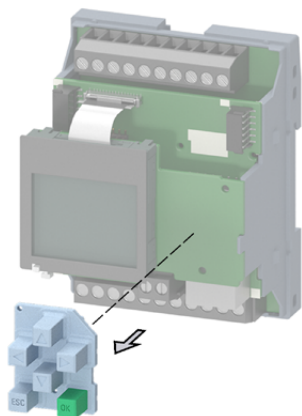
---

**Note**

This step is not required for product groups 2 and 3.

---

Remove the keypad.



## 6. Disassembly of the rear enclosure

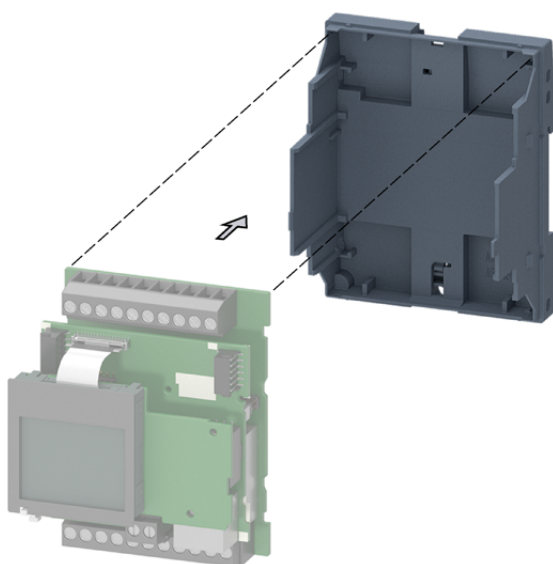
Separate the assembled PCB from the rear enclosure.

---

**Note**

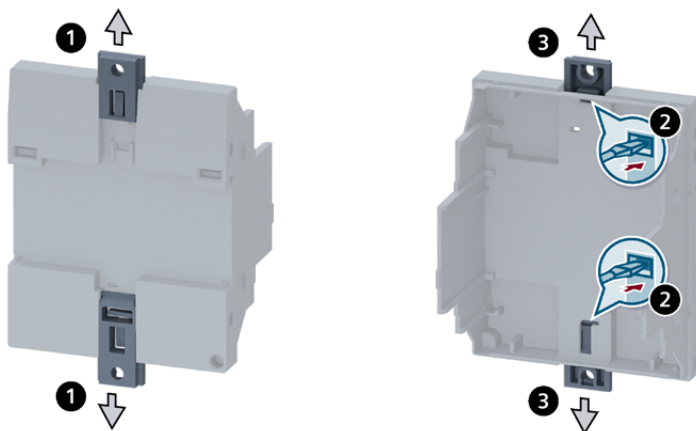
For product group 3, loosen the 4 snap locks that hold the assembled PCB with a slotted screwdriver.

---



## 7. Removal of the mounting slides

1. Push the top mounting slide up and the bottom mounting slide down.
2. Press the snap locks on the inside of the rear enclosure with a slotted screwdriver. Remove the mounting slides.



## 8. Disassembly of the assembled PCBs

---

**Note**

For product groups 2 and 3, continue with point 3 of this step.

---

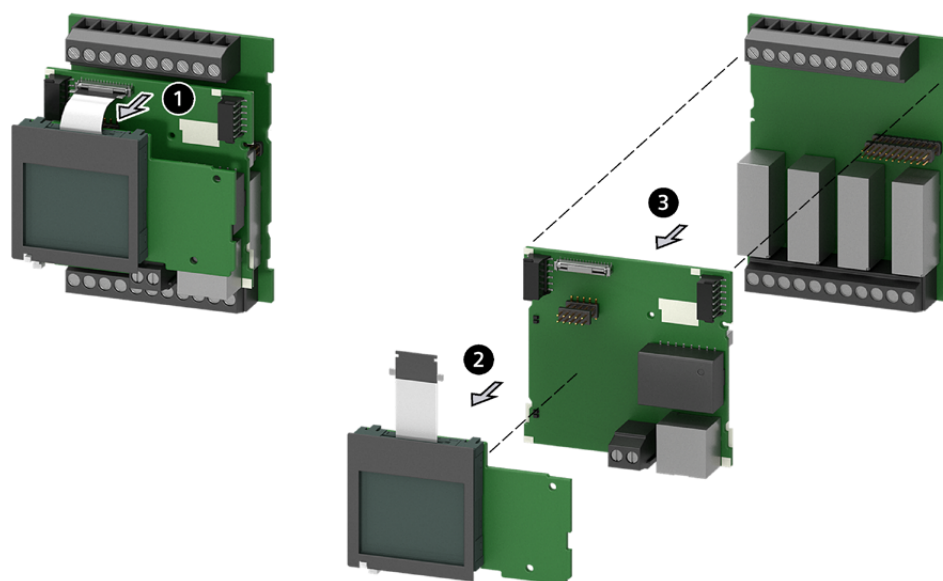
1. Unlock the plug-in connector by pressing the button. Pull out the FPC cable.
2. Remove the assembled PCB of the LCD.
3. Separate the 2 rear assembled PCBs from one another.

---

**Note**

In product group 3, there is a slide present on the middle assembled PCB (position 4). To remove the slide, push it to the left.

---



## 9. Disassembly of the LCD

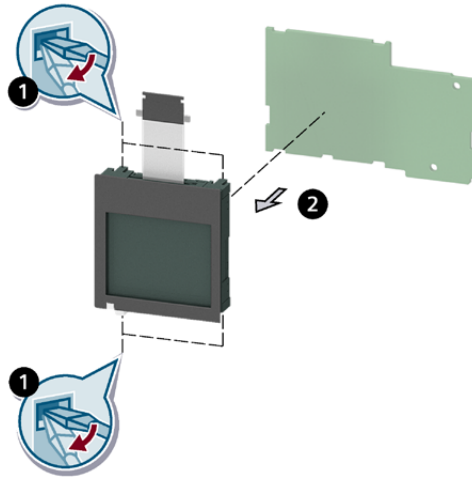
---

### Note

This step is not required for product groups 2 and 3.

---

1. To loosen the LCD, press on the 4 corners of the display with a slotted screwdriver.
2. Remove the LCD.



## Explanation of substances and components

### Components according to Directive 2012/19/EU Annex VII

You must remove at least the following substances, mixtures and components from the product:

Substance/mixture/component	Position	Disassembly step
PCBs with a surface area greater than 10 cm <sup>2</sup>	3, 4, 5	Step 8
Plastic with brominated flame-retardants	3, 4, 5, 10	Steps 2 and 8

### Additional information

In order to support the recycling economy, SIEMENS creates transparency that goes beyond the regulatory requirements. See the table for additional information on smaller PCBs or displays, as well as metal alloys containing elements that may be critical at the end of the service life, such as beryllium or lead.

This information does not fall within the scope of Annex VII of Directive 2012/19/EU.

Substance/mixture/component	Position	Disassembly step
Liquid crystal displays (possibly with enclosure) with a surface area of less than 100 cm <sup>2</sup>	6	Step 9
PCBs with a surface area less than 10 cm <sup>2</sup>	10	Step 2

## Received material fractions

All results from this process must be managed, handled, and disposed of in accordance with applicable waste laws and regulations including, but not limited to, the Waste Framework Directive and its national legislation in Europe and worldwide.

The following table contains the main material fractions. The table does not claim to be complete.

Position	Possible material fractions (not exhaustive)
2, 8, 9, 11	Polycarbonate
3, 4, 5, 10	Copper, precious metals, tin
6	Polycarbonate, glass, copper, precious metals, tin

## Disclaimer of liability

The Recycler Guide is for information purposes only.

This Recycler Guide does not guarantee the composition of any product or that the product will retain a specific composition for a specific period of time. Therefore, all warranties, assurances, conditions implied by statute or common law are excluded to the fullest extent permitted by applicable law.

The Recycler Guide provides information about the disassembly process of an appliance so that the components can be assigned to the correct recycling channels. Reuse of dismantled components is not permissible.

**Siemens therefore assumes no liability for errors or consequences that may result from the use of this information to the greatest possible legal extent.**

Please note that the data in this Recycler Guide cannot be compared to data calculated based on product category rules (PCRs) other than the above standards. The values given are only valid in the specified context and cannot be used directly to create the environmental compatibility assessment of a plant.