

CRITCHLEY 9004

ISSUE D - 03/04/98

Critchley Components Limited

PO Box 246

Queens Drive Industrial Estate

Nottingham NG2 1NQ

United Kingdom

Tel: +44 (0) 115 986 1126

Fax: +44 (0) 115 986 0563

A compact encapsulated line isolating transformer, BAPT and BSi certified. Tested and approved in accordance with the requirements of EN41003: 1997, EN60950: 1992 (IEC950), EN60065: 1994 and AS/NZS 3260:1993 (BSi Certificate Nos. 7082 and 7456).

ELECTRICAL SPECIFICATION

DC Resistance:

Primary $32\Omega \pm 15\%$

Secondary $42\Omega \pm 15\%$

Series O/C Inductance:

measured @ 250mV

200Hz >1.9H

2000Hz >0.4H

4000Hz >0.2H

Series O/C AC Resistance:

measured @ 250mV

200Hz >2.0K Ω

2000Hz >6.8K Ω

4000Hz >9.3K Ω

Leakage Inductance:

200Hz - 4000Hz

1.6mH max.

Harmonic Distortion:

200Hz, -3dBm on primary,

600 Ω load on secondary.

2f: -70dB max.

3f: -62dB max.

TDdBm: -63dBm max.

Insertion Loss:

200Hz - 4000Hz

(600 Ω ref., 600 Ω load)

1.1dB max.

Frequency Response:

200Hz - 4000Hz

(600 Ω ref., 600 Ω load)

± 0.4 dB max.

Return Loss:

200Hz - 4000Hz

>21dB (when using recommended circuit).

Max. DC current

0mA

ENVIRONMENTAL & SAFETY SPECIFICATION

Voltage Breakdown:

Tested according to

EN60950 part 5.3.2.

(test voltage: 3000 Volts).

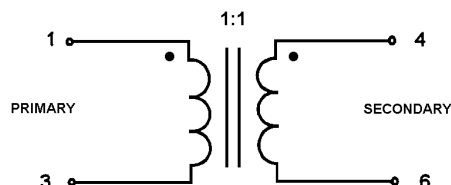
Storage temperature:

Tested to IEC 68-2-14:1984

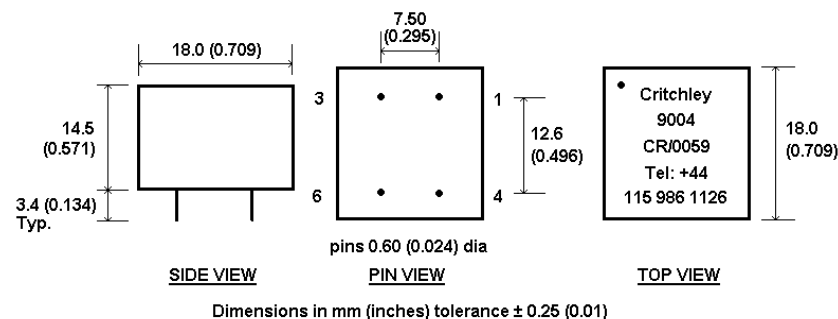
test procedure Nb.

(temperature range -25°C to +85°C).

CIRCUIT SCHEMATIC



MECHANICAL SPECIFICATION

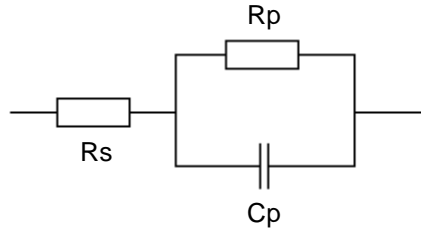


As this product is covered by a BAPT Certificate of Recognition (CR0059) approvals time will be reduced.

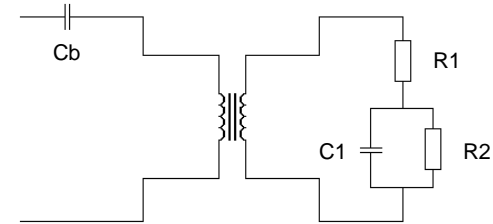


Application Circuits

Reference Impedance (ETS300 001):



Circuit description:



Country	Ref. Impedance Values			Recommended Circuit Values			
	R_s	R_p	C_p	C_b	R_1	C_1	R_2
	(Ω)	(Ω)	(nF)	(μF)	(Ω)	(nF)	(Ω)
UK, New Zealand	370	620	310	3.3	370	310	620
Germany, Switzerland	220	820	115	2.2	220	115	910
Australia	220	820	120	2.2	220	120	910
Sweden, Pan European (TBR 21)	270	750	150	3.3	250	150	910
Norway	120	820	110	3.3	120	110	950
Austria, Belgium, Canada, France, Finland, Hong Kong, Ireland, Italy, Japan, Netherlands, Portugal, Singapore, Taiwan, USA, Spain, Denmark	600 Ω			4.7	-	-	600

Notes:

Country reference networks are subject to change and interpretation. The above is intended as an initial reference and should you require more information for a network not shown please contact your local sales office. Software models are available on disk for all components.