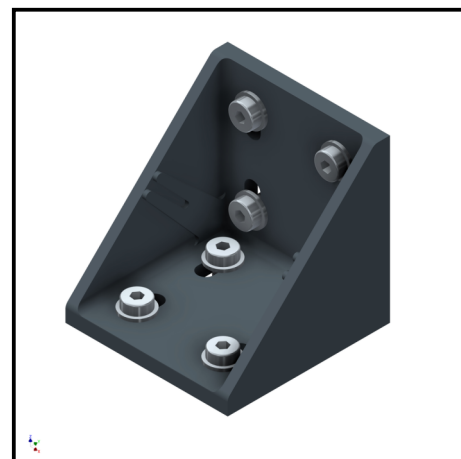
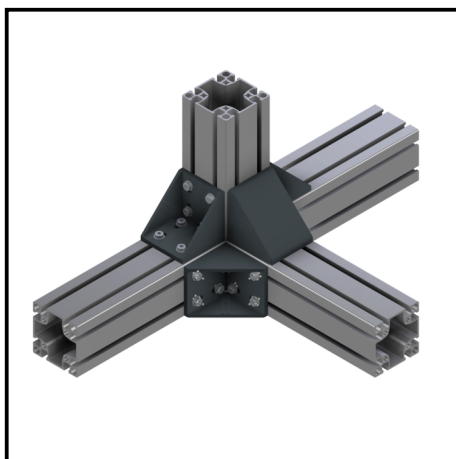
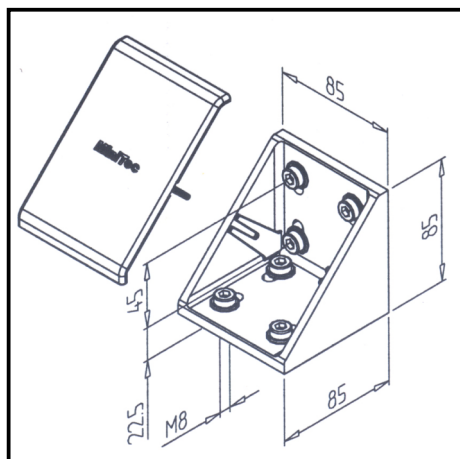


MOUNTING ANGLE 90 GD-Z

Article Nr. 21.0978/0

See the product on the website →

Download CAD Files →



TECHN. DATA / ITEMS SUPPLIED

- Aluminium, Pressure die-casting, powder-coated, grey
- With fastening material steel, zinc plated
- Package size of 25 pieces **part no.** [21.0978/025](#)
- **Conductive version part no.** [21.0978/6](#)
- For use on vertical struts, mounting angle **part no.** [21.0978/7](#) (square nuts with position-fixing)
- Weight = 0.497 kg/piece

APPLICATIONS

- For profiles 90 and 180
- General constructions, particularly for subsequent insertion of profiles into existing constructions
- Strengthening of profile constructions

ASSEMBLY

- Fasten to profile groove with supplied hardware
- Hammer head screw **part no.** [21.1370/0](#) can be used
- End cap MW 90 GD-Z **part-No.** [22.0999/1](#)
- Recommended locking torque: 20 Nm