

SHOCK ABSORBER SERIES RB

- ✓ Automatic adjustment to the most appropriate absorption performance
- ✓ High resistance to load deviation
- ✓ Double seal enclosure
- ✓ Compact design



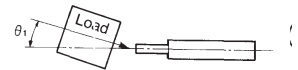
TECHNICAL SPECIFICATIONS

Model	Basic type	RB0806	RB1007	RB1412	RB2015	RB2725
	With cap	RBC0806	RBC1007	RBC1412	RBC2015	RBC2725
Max. energy absorption/Stroke (Nm)		3	6	20	60	150
Stroke (mm)		6	7	12	15	25
Max. impact speed		5m/sec				
Max angle of impact		3°				
Max. operation cycle/min		80	70	45	25	10
Ambient temperature		-10~+80°C				
Spring force	Extended (N)	3.5	6.5	7.0	8.5	9
	Compressed (N)	7.5	9.6	6.3	20.9	20.4
Weight (g)		15	25	65	150	360
Option	Stopper nut	RB08S	RB10S	RB14S	RB20S	RB27S

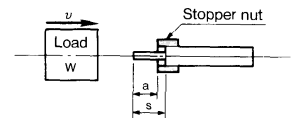
*At maximum energy absorption per cycle. Maximum operation cycle/min can increase in proportion to energy absorption

PRECAUTION

1. Load should always be aligned with the axis of piston rod. (In the case of allowable eccentricity of 3° and more, please contact your SMC regional centre.



2. Adjustment of the stopper nut (to adjust the length a) will control the suspension time of the impacting object.



S: Stroke of shock absorber

HOW TO ORDER SHOCK ABSORBER SERIES RB

RB	○	○
CAP	○	○
NIL ...Without		O/D THREAD-STROKE
CWith		
		0806
		1007
		1412
		2015
		2725

ACCESSORIES STOPPER NUT

STOPPER NUT	APPLICABLE MODEL
RB08SRB0806
RB10SRB1007
RB14SRB1412
RB20SRB2015
RB27SRB2725

STOCKED PRODUCTS
FOR A LIST OF STOCKED PRODUCTS,
PLEASE SEE THE CURRENT SMC PRICE LIST

ACCESSORIES SPARE CAP

RB08C
RB10C
RB14C
RB20C
RB27C

STOCKED PRODUCTS
FOR A LIST OF STOCKED PRODUCTS,
PLEASE SEE THE CURRENT SMC PRICE LIST

DIMENSIONS
SEE NEXT PAGE

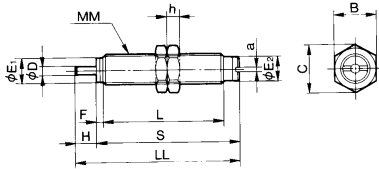


SEE INSIDE FRONT COVER FOR
DETAILS OF YOUR LOCAL SALES OFFICE

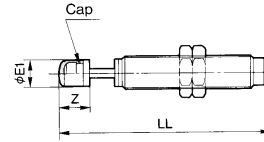


FOR FURTHER TECHNICAL
DETAILS ON THIS
PRODUCT REQUEST
CATALOGUE REFERENCE
E213

DIMENSIONS
BASIC TYPE RB0806•RB1007

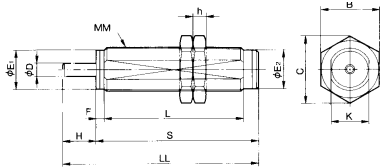


DIMENSIONS
WITH CAP RBC0806•RBC1007

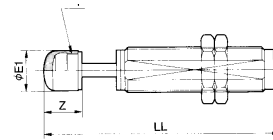


Model		Basic type										With cap			Hexagonal nut		
Basic type	With cap	∅D	∅E ₁	∅E ₂	F	H	a	L	LL	MM	S	∅E ₁	LL	Z	B	C	h
RB0806	RBC0806	2.8	6.8	6.8	2.4	6	1.4	33.2	46.6	M8 x 1.0	40.6	6.8	57.1	10.5	12	13.9	4
RB1007	RBC1007	3	8.6	8.6	2.7	7	1.4	39	53.7	M10 x 1.0	46.7	8.0	63.7	10	14	16.2	4

DIMENSIONS
BASIC TYPE RB1412•RB2015•RB2725

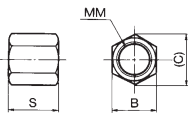


DIMENSIONS
WITH CAP RBC0806•RBC1007

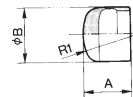


Model		Basic type										With cap			Hexagonal nut		
Basic type	With cap	∅D	∅E ₁	∅E ₂	F	H	K	L	LL	MM	S	∅E ₁	LL	Z	B	C	h
RB1412	RBC1412	5	12.2	12	3.5	12	12	58.2	79.3	M14 x 1.5	67.3	12	92.8	13.5	19	21.9	6
RB2015	RBC2015	6	18.2	18	4	18	18	62.2	88.2	M20 x 1.5	73.2	18	105.2	17	27	31.2	6
RB2725	RBC2725	8	25.2	25	5	25	25	86	124	M27 x 1.5	99	25	147	23	36	41.6	6

DIMENSIONS
STOPPER NUT



DIMENSIONS
CAP



Parts No.	Dimensions			
	B	C	S	MM
RB08S	12	13.9	6.5	M8 x 1.0
RB10S	14	16.2	8	M10 x 1.0
RB14S	19	21.9	11	M14 x 1.5
RB20S	27	31.2	16	M20 x 1.5
RB27S	36	41.6	22	M27 x 1.5

Parts No.	Dimensions		
	A	∅B	R1
RB08C	6.5	6.8	6
RB10C	9	8.7	7.5
RB14C	12.5	12	10
RB20C	16	18	20
RB27C	21	25	25

