

# ME PLC 40 B BUS 50/40 7035VPE1 - Mounting base housing



2202057

<https://www.phoenixcontact.com/in/products/2202057>

Please be informed that the data shown in this PDF document is generated from our online catalog. Please find the complete data in the user documentation. Our general terms of use for downloads are valid.



DIN rail housing, Lower housing part with metal foot catch, for 50/40 bus connector, width: 39.7 mm, height: 180.1 mm, depth: 137.7 mm, color: light gray (similar RAL 7035), cross connection: DIN rail connector (optional), number of positions cross connector: 50

## Your advantages

- Tool-free mounting
- Available in 40 mm overall width
- Flammability rating V0 in accordance with UL 94
- Variety of connection technology
- Can be mounted on the DIN rail
- With DIN-rail-mountable bus connector and power connector system as an option

## Commercial data

Item number	2202057
Packing unit	1 pc
Minimum order quantity	1 pc
Sales key	ACH
Product key	ACHEAA
GTIN	4046356980609
Weight per piece (including packing)	157.7 g
Weight per piece (excluding packing)	157 g
Customs tariff number	85389099
Country of origin	DE

# ME PLC 40 B BUS 50/40 7035VPE1 - Mounting base housing



2202057

<https://www.phoenixcontact.com/in/products/2202057>

## Technical data

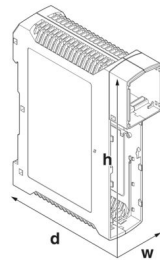
### Notes

Assembly note	Please observe the application note in the download area.
---------------	---

### Product properties

Product type	Enclosure bottom part
Housing type	DIN rail housing
Housing series	ME PLC
Max. number of positions	36 (pitch: 5 mm)
Type	Lower housing part with metal foot catch
Ventilation openings present	yes

### Dimensions

Dimensional drawing	
Width	39.7 mm
Height	180.1 mm
Depth	137.7 mm
Depth from top edge of DIN rail	131.1 mm
Depth from top edge of DIN rail to support point on upper part	108 mm

### PCB design

PCB thickness	1.4 mm ... 1.8 mm
---------------	-------------------

### Material specifications

Color (Housing)	light gray (RAL 7035)
Flammability rating according to UL 94	V0
CTI according to IEC 60112	225
Housing material	PC
Surface characteristics	untreated

### Environmental and real-life conditions

#### Ambient conditions

Max. IP code to attain	IP20
Ambient temperature (operation)	-40 °C ... 105 °C (depending on power dissipation)
Ambient temperature (storage/transport)	-40 °C ... 70 °C

# ME PLC 40 B BUS 50/40 7035VPE1 - Mounting base housing



2202057

<https://www.phoenixcontact.com/in/products/2202057>

Ambient temperature (assembly)	-5 °C ... 100 °C
Relative humidity (storage/transport)	95 %

## PCB data

Number of PCB holders	1
Type of PCB mount	Latching
Total PCB surface	16000 mm²
Thickness of the PCB	1.4 mm ... 1.8 mm

## Mounting

Mounting type	DIN rail mounting
---------------	-------------------

## Packaging specifications

Type of packaging	packed in cardboard
Outer packaging type	Carton

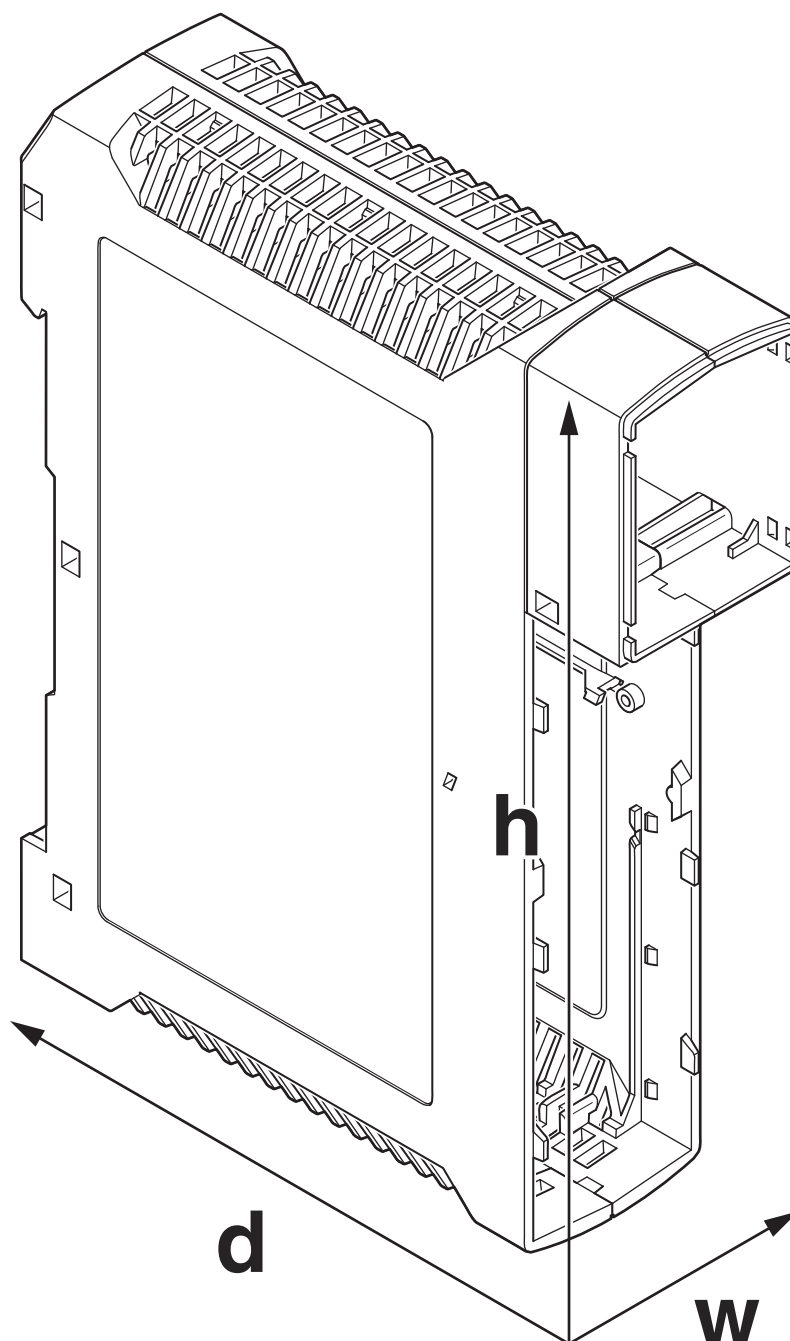
# ME PLC 40 B BUS 50/40 7035VPE1 - Mounting base housing

2202057

<https://www.phoenixcontact.com/in/products/2202057>

## Drawings

Dimensional drawing



# ME PLC 40 B BUS 50/40 7035VPE1 - Mounting base housing



2202057

<https://www.phoenixcontact.com/in/products/2202057>

## Approvals

🔗 To download certificates, visit the product detail page: <https://www.phoenixcontact.com/in/products/2202057>



**UL Recognized**

Approval ID: E240868

# ME PLC 40 B BUS 50/40 7035VPE1 - Mounting base housing



2202057

<https://www.phoenixcontact.com/in/products/2202057>

## Classifications

### ECLASS

ECLASS-11.0	27182702
ECLASS-13.0	27190601

### ETIM

ETIM 9.0	EC002779
----------	----------

### UNSPSC

UNSPSC 21.0	31261500
-------------	----------

2202057  
<https://www.phoenixcontact.com/in/products/2202057>

Environmental product compliance

EU RoHS	
Fulfills EU RoHS substance requirements	Yes, No exemptions
China RoHS	
Environment friendly use period (EFUP)	EFUP-E
	No hazardous substances above the limits
EU REACH SVHC	
REACH candidate substance (CAS No.)	No substance above 0.1 wt%

# ME PLC 40 B BUS 50/40 7035VPE1 - Mounting base housing



2202057

<https://www.phoenixcontact.com/in/products/2202057>

## Mandatory accessories

### ME PLC 40 CS GY7035 - Housing cover

2201490

<https://www.phoenixcontact.com/in/products/2201490>

DIN rail housing, Cover, width: 39.7 mm, height: 51.8 mm, depth: 13.65 mm, color: light gray (similar RAL 7035)



---

### ME PLC 40 PL S GY7035 - Insertion plate

2201497

<https://www.phoenixcontact.com/in/products/2201497>

Fitted plate, for assembly underneath the cover in short design, color: light gray





# ME PLC 40 B BUS 50/40 7035VPE1 - Mounting base housing



2202057

<https://www.phoenixcontact.com/in/products/2202057>

## ME PLC 40 CS TRANS - Housing cover

2201491

<https://www.phoenixcontact.com/in/products/2201491>

DIN rail housing, Cover, width: 39.7 mm, height: 51.8 mm, depth: 13.65 mm, color: transparent



---

## ME PLC 40 MT S BK - Insertion plate

2201496

<https://www.phoenixcontact.com/in/products/2201496>

Matrix with defined engagement mechanism, for assembly underneath the cover in short design, color: black



# ME PLC 40 B BUS 50/40 7035VPE1 - Mounting base housing



2202057

<https://www.phoenixcontact.com/in/products/2202057>

## ME PLC 40 CL GY7035 - Front connection module

2201505

<https://www.phoenixcontact.com/in/products/2201505>

DIN rail housing, Universal cover, width: 39.7 mm, height: 129.7 mm, depth: 47 mm, color: light gray (similar RAL 7035)



---

## ME PLC 40 CT20 GY7035 - Front connection module

2201493

<https://www.phoenixcontact.com/in/products/2201493>



Connection technology carrier, fully assembled with FKCN 2x 10-pos., cover and release lever, incl. fitted cover, corresponding header: 1x CCDN 2,5/10-G1 P26 THR (1734355)

# ME PLC 40 B BUS 50/40 7035VPE1 - Mounting base housing



2202057

<https://www.phoenixcontact.com/in/products/2202057>

## ME PLC 40 CT36 GY7035 - Front connection module

2201494

<https://www.phoenixcontact.com/in/products/2201494>



Connection technology carrier, fully assembled with FKCN 2x 18-pos., cover and release lever, incl. fitted cover, corresponding header: 1x CCDN 2,5/18-G1 P26 THR (1734436)

---

## ME PLC 40 CT10 GY7035 - Front connection module

2201492

<https://www.phoenixcontact.com/in/products/2201492>



Connection technology carrier, fully assembled with FKCN 1 x 10-pos., cover and release lever, incl. fitted cover; corresponding header: MSTBA 2,5/10-G (1757543)

# ME PLC 40 B BUS 50/40 7035VPE1 - Mounting base housing



2202057

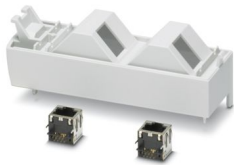
<https://www.phoenixcontact.com/in/products/2202057>

## ME PLC 40 CTRJ45 GY7035 - Front connection module

2201495

<https://www.phoenixcontact.com/in/products/2201495>

Connection technology carrier for RJ45 connection, pre-assembled with cover and release lever, incl. fitted cover and 2x RJ45 connector plugs



---

## Accessories

### NS 105/20 UNPERF - DIN rail, unperforated

2201508

<https://www.phoenixcontact.com/in/products/2201508>

DIN rail, unperforated, 105 x 20 mm, galvanized and thick layer passivated, cut to customer-specific length, specify length in [mm] as per order key



# ME PLC 40 B BUS 50/40 7035VPE1 - Mounting base housing



2202057

<https://www.phoenixcontact.com/in/products/2202057>

## EML (44X64)R-ME - Label for ME ... UT ... BUS ... housing

0828266

<https://www.phoenixcontact.com/in/products/0828266>



Label for ME ... UT ... BUS ... housing, Roll, white, unlabeled, can be labeled with: THERMOMARK ROLLMASTER 300/600, THERMOMARK X1.2, THERMOMARK ROLL X1, THERMOMARK ROLL 2.0, THERMOMARK ROLL, mounting type: adhesive, Number of individual labels: 200, text field height: 64 mm, text field width: 44 mm

---

## ME PLC 40 BUS 50/40 KIT BK - DIN rail bus connectors

2201502

<https://www.phoenixcontact.com/in/products/2201502>



Bus connector set consisting of 50-pos. and 40-pos. connectors, plastic upper part and base, plus metal clamp for mounting on DIN rail, without PCB

# ME PLC 40 B BUS 50/40 7035VPE1 - Mounting base housing



2202057

<https://www.phoenixcontact.com/in/products/2202057>

## ME PLC EBT GY7035 - End bracket

2201498

<https://www.phoenixcontact.com/in/products/2201498>

End brackets for DIN rail mounting, incl. fixing screws



---

Phoenix Contact 2025 © - all rights reserved

<https://www.phoenixcontact.com>

PHOENIX CONTACT (I) Pvt. Ltd.

A-58/2, Okhla Industrial Area, Phase - II, New Delhi-110 020

+91.1275.71420

[info@phoenixcontact.co.in](mailto:info@phoenixcontact.co.in)