



Connectors > Rectangular Connectors > Rectangular Contact Inserts



Contact Type: **Screw**
 Pole Configuration: **6+PE**
 Number of Positions: **6**
 Sealable: **No**
 Wire Size: **14 – 20 AWG**

Features

Product Type Features

Product Type	Contact Insert
Sealable	No

Configuration Features

Number of Positions	6
---------------------	---

Contact Features

Contact Type	Screw
Pole Configuration	6+PE
Contact Current Rating (Max)	16 A

Dimensions

Wire Size	.5 – 2.5 mm ²
-----------	--------------------------

Operation/Application

Circuit Application	Power & Signal
---------------------	----------------

Product Compliance

[For compliance documentation, visit the product page on TE.com>](#)

EU RoHS Directive 2011/65/EU	Compliant
EU ELV Directive 2000/53/EC	Not Yet Reviewed
China RoHS 2 Directive MIIT Order No 32, 2016	No Restricted Materials Above Threshold



EU REACH Regulation (EC) No. 1907/2006

Current ECHA Candidate List: JUL 2019 (201)

Candidate List Declared Against: JUL 2019 (201)

Does not contain REACH SVHC

EU REACH Regulation (EC) No. 1907/2006

Current ECHA Candidate List: JUL 2019 (201)

Candidate List Declared Against: JUL 2019 (201)

Halogen Content

Low Halogen - Br, Cl, F, I < 900 ppm per homogenous material. Also BFR/CFR/PVC Free

Solder Process Capability

Not reviewed for solder process capability

Product Compliance Disclaimer

This information is provided based on reasonable inquiry of our suppliers and represents our current actual knowledge based on the information they provided. This information is subject to change. The part numbers that TE has identified as EU RoHS compliant have a maximum concentration of 0.1% by weight in homogenous materials for lead, hexavalent chromium, mercury, PBB, PBDE, DBP, BBP, DEHP, DIBP, and 0.01% for cadmium, or qualify for an exemption to these limits as defined in the Annexes of Directive 2011/65/EU (RoHS2). Finished electrical and electronic equipment products will be CE marked as required by Directive 2011/65/EU. Components may not be CE marked. Additionally, the part numbers that TE has identified as EU ELV compliant have a maximum concentration of 0.1% by weight in homogenous materials for lead, hexavalent chromium, and mercury, and 0.01% for cadmium, or qualify for an exemption to these limits as defined in the Annexes of Directive 2000/53/EC (ELV). Regarding the REACH Regulations, TE's information on SVHC in articles for this part number is still based on the European Chemical Agency (ECHA) 'Guidance on requirements for substances in articles' (Version: 2, April 2011), applying the 0.1% weight on weight concentration threshold at the finished product level. TE is aware of the European Court of Justice ruling of September 10th, 2015 also known as O5A (Once An Article Always An Article) stating that, in case of 'complex object', the threshold for a SVHC must be applied to both the product as a whole and simultaneously to each of the articles forming part of its composition. TE has evaluated this ruling based on the new ECHA "Guidance on requirements for substances in articles" (June 2017, version 4.0) and will be updating its statements accordingly.

Compatible Parts



TE Model / Part #
T1510063000-000
H6B-AD



TE Model / Part #
T1500062000-000
H6B-AGS



TE Model / Part #
T1500063000-000
H6B-AG



TE Model / Part #
T1510062100-000
H6B-ADS



TE Model / Part #
T1610062116-000
H6B-SGRS-PG16



TE Model / Part #
T1610062120-000
H6B-SGRS-M20



TE Model / Part #
T1610062220-000
H6B-SGRS-2M20



TE Model / Part #
T1610063116-000
H6B-SGR-PG16



TE Model / Part #
T1620063120-000
H6B-SDR-M20



TE Model / Part #
T1620063216-000
H6B-SDR-2PG16



TE Model / Part #
T1660063221-000
H6B-SDRH-2PG21



TE Model / Part #
T1730062120-000
H6B-TBFS-M20



TE Model / Part #
T1770063121-000
H6B-TBFH-PG21



TE Model / Part #
T1770063125-000
H6B-TBFH-M25



TE Model / Part #
T1503063000-000
H6B-AG



TE Model / Part #
T1500063500-000
H6B-AG



TE Model / Part #
T1510062000-000
H6B-ADMS



TE Model / Part #
T1610062113-000
H6B-SGRS-PG13.5

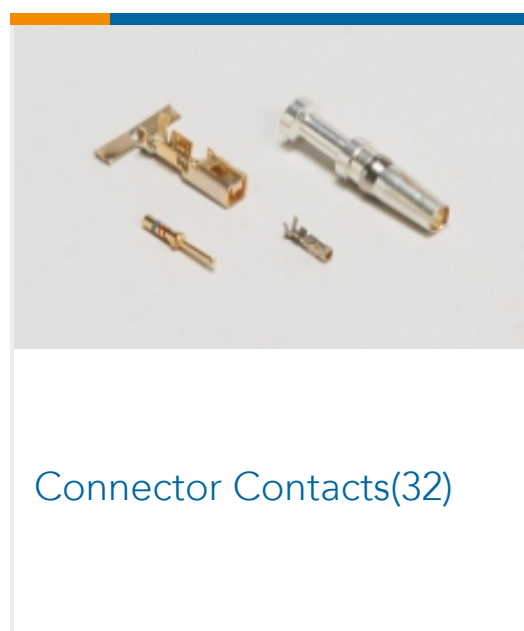


TE Model / Part #
T1610062125-000
H6B-SGRS-M25



TE Model / Part #
T1610062216-000
H6B-SGRS-2PG16

Also in the Series | **HDC HE**



Connector Contacts(32)

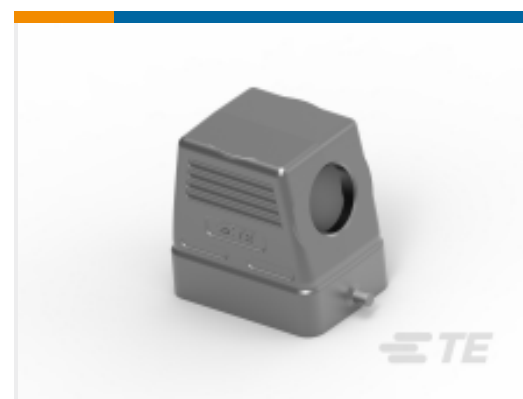


Rectangular Contact Inserts
(123)

Customers Also Bought



TE Model / Part #
T1500062000-000
H6B-AGS



TE Model / Part #
T1310060116-000
H6B-TS-PG16



TE Model / Part #
T2040062101-000
HE-006-M



TE Model / Part #
T1210240121-000
H24B-TS-PG21



TE Model / Part #
T2040162201-000
HE-016-F



TE Model / Part #
T2040242101-000
HE-024-M



TE Model / Part #
T2020002010-000
CDF-1.0



TE Model / Part #
T2030002008-000
CEF-0.75



TE Model / Part #
T0931100425-000
CODING-PIN-M3-LTM



TE Model / Part #
T0931106527-000
CODING-PIN-M3-LTF

Documents

Product Drawings

[HE-006-F](#)

English

CAD Files

[3D PDF](#)

3D

Customer View Model

[ENG_CVM_CVM_T2040062201-000_B.2d_dxf.zip](#)

English

Customer View Model

[ENG_CVM_CVM_T2040062201-000_B.3d_igs.zip](#)

English

Customer View Model

[ENG_CVM_CVM_T2040062201-000_B.3d_stp.zip](#)

English

Datasheets & Catalog Pages

[HEAVY DUTY CONNECTORS](#)



English

[Heavy Duty Connectors](#)

English

[HDC Flyers July 2015 \(Chinese\)](#)

[HDC Connectors - July 2015 \(English\)](#)

English

Product Specifications

[Application Specification](#)

English

[Application Specification](#)

Agency Approvals

[Agency Approval Document](#)

English