



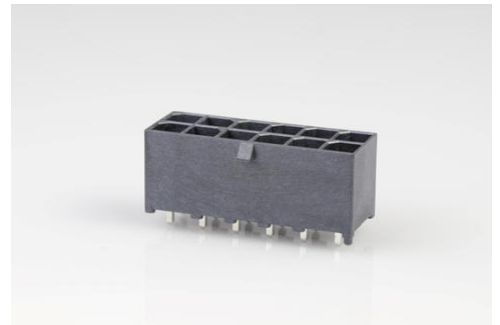
Part Number : [768290112](#)

Product Description : Mega-Fit Slim Vertical Header, Through Hole, 5.70mm Pitch, Dual Row, 12 Circuits, 1.52µm Matte Tin (Sn) Plating, Glow-Wire Capable, Black

Series Number : 76829

Status : Active

Product Category : PCB Headers and Receptacles



Documents & Resources

Drawings

[768290112_sd.pdf](#)

[768291100-000.pdf](#)

3D Models and Design Files

[STEP AP242](#)

[SOLIDWORKS](#)

[Creo](#)

[Symbol and Footprint \(Multi-Format\)](#)

Specifications

[768232000-AS-000.pdf](#)

[AS-76823-100-001.pdf](#)

[1720631000-PS-000.pdf](#)


[PS-76823-100-001.pdf](#)

[1720631000-TS-000.pdf](#)

[TS-76823-100-001.pdf](#)

Product Environment Compliance

Compliance

GADSL/IMDS	Compliant with Exemption 44; 33
China RoHS	 per SJ/T 11365-2006
EU ELV	Not Relevant

Low-Halogen Status	Low-Halogen per IEC 61249-2-21
REACH SVHC	Not Contained per D(2025)4165-DC (25 June 2025)
EU RoHS	Compliant per EU 2015/863

Compliance Statements

- EU RoHS
- REACH SVHC
- Low-Halogen

Industry Documents

- IPC 1752A Class C
- IPC 1752A Class D
- Molex Product Compliance Declaration
- IEC-62474
- chemSHERPA (xml)

Substances of Interest

- PFAS

EU RoHS Certificate of Compliance

Additional Product Compliance Information

Part Details

General

Status	Active
Category	PCB Headers and Receptacles
Series	76829
Description	Mega-Fit Slim Vertical Header, Through Hole, 5.70mm Pitch, Dual Row, 12 Circuits, 1.52µm Matte Tin (Sn) Plating, Glow-Wire Capable, Black
Application	Power, Wire-to-Board
Component Type	PCB Header
Product Name	Mega-Fit
UPC	889056895613

Agency

UL	E29179
----	--------

Electrical

Current - Maximum per Contact	23.5A
Voltage - Maximum	600V AC (RMS)/DC

Physical

Breakaway	No
Circuits (Loaded)	12
Circuits (maximum)	12
Color - Resin	Black
Durability (mating cycles max)	25
First Mate / Last Break	No
Flammability	94V-0
Glow-Wire Capable	Yes
Keying to Mating Part	Yes
Lock to Mating Part	Yes
Mated Height	16.78mm
Material - Metal	High Conductivity Copper
Material - Plating Mating	Matte Tin
Material - Plating Termination	Matte Tin
Material - Resin	Liquid Crystal Polymer
Net Weight	6.631/g
Number of Rows	2
Orientation	Vertical
Packaging Type	Tray
PCB Locator	Yes
PCB Retention	Yes
PCB Thickness - Recommended	1.58mm
Pitch - Mating Interface	5.70mm
Pitch - Termination Interface	5.70mm
Plating min - Mating	1.524µm
Plating min - Termination	1.524µm
Polarized to Mating Part	Yes
Polarized to PCB	Yes
Shrouded	Yes
Temperature Range - Operating	-40° to +105°C

Termination Interface Style	Through Hole
Unmated Height	14.80mm

Mates With / Use With

Mates with Part(s)

Description	Part Number
Mega-Fit Dual Row Receptacle Housings	<u>170001</u>
Mega-Fit Dual Row Receptacle Housings	<u>171692</u>
Mega-Fit-to-Mega-Fit Off-the-Shelf (OTS) Cable Assemblies	<u>45136</u>

This document was generated on Nov 05, 2025