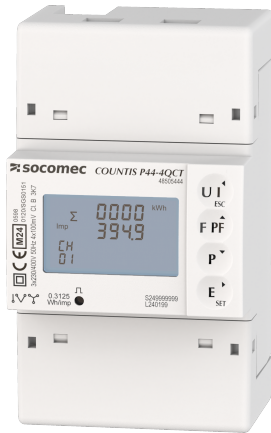


**48505244**

## Energy Meter COUNTIS P44 Three/four conductor 2 QCT, MID Modbus



### Strong points

- Quick and easy wiring
- MID certification
- Versatile
- Complete ecosystem for easy integration
- Multi-interfaces
- Space-saving

### Compliance with standards

- IEC 62053-21
- IEC 62053-23
- IEC 62053-31
- IEC 62052-11
- IEC 61010-1
- EN 50470-1
- EN 50470-3

### Link to the reference



<https://emea.socomec.com/en/reference/48505244>

COUNTIS P4x are three-phase modular electrical energy meters that enable viewing of the different energies consumed and produced, and also of powers and other measurements directly on the backlit LCD display. They connect indirectly via a wide selection of transformers and current sensors. They are suitable for use in sub-billing applications thanks to their MID certification.

### Classification

UNSPSC	41113708
ETIM Class	EC001506
IGCC	6341

### Commerce

Description	Modular active-energy meters COUNTIS P44-2QCT MID-certified Indirect three-phase via CT block, MODBUS type of electrical protocols, fully integrated in SOCOMEC ecosystem including: Webview/screens/gateways/configuration software
Effective date	2025-04-01
Offer Life Cycle Code	40
Country of origin	CN

### Environmental Sustainability

Climate change - Total - Cradle to Grave [kg CO <sub>2</sub> eq.]	24
Climate change - Total - Cradle to Gate [kg CO <sub>2</sub> eq.]	12
SVHC > 0.1 mass percentage?	No
RoHS applicable?	Yes

### ETIM - Electrical characteristics

Nominal voltage (Un) N-L [V]	184..276
Nominal voltage (Un) L-L [V]	320..480
Frequency [Hz]	45..55
Power consumption [W]	1
Accuracy class	B
Pole type	Three conductor/four conductor
Energy type	Effective power and reactive power
Suitable for	Purchase/supply
Tariff type	Multi-tariff
Tariff control	External
Measurement type load profile	No
Calibrated	Yes
Pulse output	None

### ETIM - Mechanical characteristics

Escapement mechanism	No
Mounting method	DRA (DIN-rail adaptor)
Width in number of modular spacings	4
Width [mm]	71.7
Depth [mm]	66

Height [mm]	122.5
With lock code	No
Degree of protection (IP)	IP20
<b>ETIM - Technical features</b>	
Type of meter	Electronic
Model	Measurement transformer
Approval	Measuring Instruments Directive
Type of indication	Digital
Type of interface	Modbus
EEC40 signature	No
<b>Logistics</b>	
GTIN/EAN	3596033319488
Customs number	9028301900
Price unit	PC
Weight of the packing unit [kg]	0.29
Length of the packing unit [m]	0.08
Width of the packing unit [m]	0.08
Depth of the packing unit [m]	0.135
<b>Technical Characteristics</b>	
Height [mm]	122.5
Width [mm]	71.7
Depth [mm]	66
Application	Metering
Communication protocols	MODBUS
Model	P44-2QCT
Type	2 QuickConnect, MID