

HID-HeavyDuty BSX for SOX

BSX 90 L32 240V 50Hz HD1-118

Encapsulated electromagnetic copper/iron ballasts for SOX and SOX-E lamps

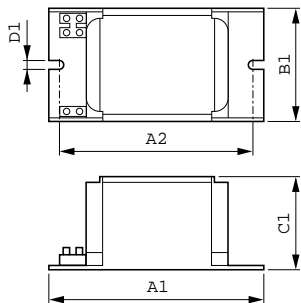
Product data

General Information	
Application Code	L32
Design	HD1-118
Lamp Type	SOX
Number of Lamps	1 piece/unit
Operating and Electrical	
Input Voltage	240 V
Input Frequency	50 Hz
Mains Voltage Performance (AC)	-8%-+6%
Mains Voltage Safety (AC)	-10%-+10%
Input Current with PF Correction	0.50 A
Input Current without PF Correction	0.94 A
Power Factor without PF Compensation (Nom)	0.45
Power Losses (Nom)	13.3 W
Wiring	
Wire Striplength	7.0 mm
Ballast Contact Wire Cross Section	0.70-6.00 mm ²
Connector Type	Screw
System characteristics	
Capacitor	10µF/250V

Rated Ballast-Lamp Power	90 W
Recommended Ignitor	ignitor SX76 (913650050566)
Temperature	
T-Storage (Max)	130 °C
T-Storage (Min)	-30 °C
T-Winding (Max)	130 °C
Delta-T Normal Conditions	65 °C
Approval and Application	
Approval Marks	CE marking ENEC certificate
Product Data	
Full product code	871150091534431
Order product name	BSX 90 L32 240V 50Hz HD1-118
EAN/UPC - Product	8711500915344
Order code	913650080526
Numerator - Quantity Per Pack	1
Numerator - Packs per outer box	6
Material Nr. (12NC)	913650080526
Net Weight (Piece)	1.260 kg

HID-HeavyDuty BSX for SOX

Dimensional drawing



Product

BSX 90 L32 240V 50Hz HD1-118

BSX 90 L32 240V 50Hz HD1-118

