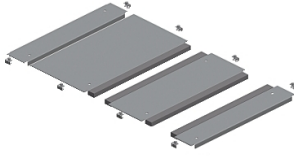


Product datasheet

Specifications



"Two entries cable gland plate, PanelSeT SFN, PanelSet SF, for electrical enclosure W600 D1200mm, fixed by clips"

Local distributor code:

398247261

NSYEC6122

EAN Code: 3606480064135

Main

Range	PanelSeT
Product or component type	Cable gland plate
Accessory / separate part category	Cable management accessory
Range compatibility	PanelSeT SF
Mounting location	Enclosure bottom
Cable gland type	Standard
Cable entry	2 entries
Device composition	fixing elements 1 plate self extinguishing polyurethane adhesive gasket with cross-section of 15 x 25 mm
Quantity per set	Set of 1
Material	Galvanised steel

Complementary

Height	24 mm
Width	Nominal: 600 mm Useful: 416 mm Real: 444 mm
Depth	Nominal : 1200 mm
Thickness	1.5 mm

Packing Units

Unit Type of Package 1	PCE
Number of Units in Package 1	1
Package 1 Height	3.000 cm
Package 1 Width	44.500 cm
Package 1 Length	45.000 cm
Package 1 Weight	6.566 kg
Unit Type of Package 2	PAL
Number of Units in Package 2	4
Package 2 Height	29.000 cm
Package 2 Width	45.000 cm
Package 2 Length	120.000 cm

Package 2 Weight 26.264 kg

Logistical informations

Country of origin FR

Contractual warranty

Warranty (in months) 18


Environmental Data

Schneider Electric aims to achieve Net Zero status by 2050 through supply chain partnerships, lower impact materials, and circularity via our ongoing “Use Better, Use Longer, Use Again” campaign to extend product lifetimes and recyclability.


[Environmental Data explained >](#)

[How we assess product sustainability >](#)

Use Better

 Materials and Substances	
Packaging made with recycled cardboard	No
Packaging without single use plastic	No
EU RoHS Directive	Pro-active compliance (Product out of EU RoHS legal scope)
SCIP Number	52da316e-d4e1-4114-85c0-32a03b2934fd
REACH Regulation	REACH Declaration

Use Again

 Repack and remanufacture	
End of life manual availability	No need of specific recycling operations
Take-back	No