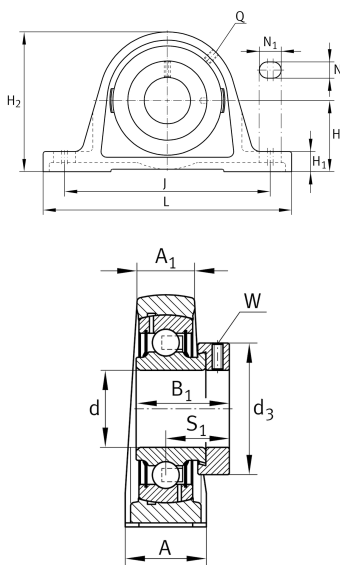


**PASE30-TV-FA125.5**

Plummer block housing unit

Plummer block housing unit PASE...-TV, RIBB plastic

Technical information



Your current product variant

Special material	TV	Plastic housing
Material	TV	Plastic
Manufacturing instruction	FA125.5	Bearing with Corrotect coating

Main Dimensions & Performance Data

d	30 mm	Bore diameter
L	163 mm	Length
H 2	84 mm	Height
≈m	0.6 kg	Weight

Mounting dimensions

J	119 mm	Distance fixing bore
N	14 mm	Width (slot)
N 1	18 mm	Length (slot)

Dimensions

H	42.9 mm	Distance shaft axis
A	46 mm	Width (base)
H 1	17.8 mm	Height (base)
B 1	35.8 mm	Locking collar total width
S	26.8 mm	Distance raceway
Q	1/4 - 28 UNF	Connection thread for lubrication



Additional information

GEH-ASE06-TV	Housing
GRAE30-NPP-B-FA107/125.5	Bearing designation
KASK06-S-G	End cap
KASK06-S-R-NBR	Open protecting cap

Temperature range

T _{min}	-35 °C	Operating temperature min.
T _{max}	100 °C	Operating temperature max.