

# A 50-18 - Ferrule

2100025

<https://www.phoenixcontact.com/gb/products/2100025>



Please be informed that the data shown in this PDF document is generated from our online catalog. Please find the complete data in the user documentation. Our general terms of use for downloads are valid.

Ferrule, Length contact range: 18 mm, sleeve length: 18 mm, color: silver



## Your advantages

- The insulation reliability of close connections is increased and the splicing of wires is prevented

## Commercial data

Item number	2100025
Packing unit	100 pc
Minimum order quantity	15,000 pc
Sales key	BH3412
Product key	BH3412
GTIN	4067923214668
Weight per piece (excluding packing)	22.22 g
Customs tariff number	85369010
Country of origin	DE

# A 50-18 - Ferrule

2100025

<https://www.phoenixcontact.com/gb/products/2100025>



## Technical data

### Notes

General	These ferrules are not included in DIN 46228-1: 1992-08
---------	---

### Product properties

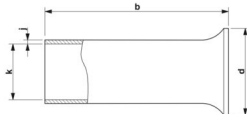
Product type	Cable end sleeve
Conductor category	stranded conductors, class 2, 5, 6 / B, C, K, M
Product property	UL certified
	Made from soft tin-plated electrolytic copper
	Correspond to the requirements of DIN 46228-1 and UL 486F in terms of size
	Long/short-term temperature: +105°C/+120°C

### Connection data

#### Conductor connection

Conductor cross section flexible max.	50 mm <sup>2</sup>
Conductor cross section AWG max.	1/0
Stripping length	40 mm

### Dimensions

Dimensional drawing	
Sleeve length	18 mm
Length contact range	18 mm
Maximum stripping length	40 mm
Ferrule diameter	10.3 mm
Sleeve wall thickness	0.3 mm
Inner dimensions of the insulating collar	13 mm

### Material specifications

Color	silver-colored
Coating	galvanically tin-plated
Surface characteristics	Tin-plated

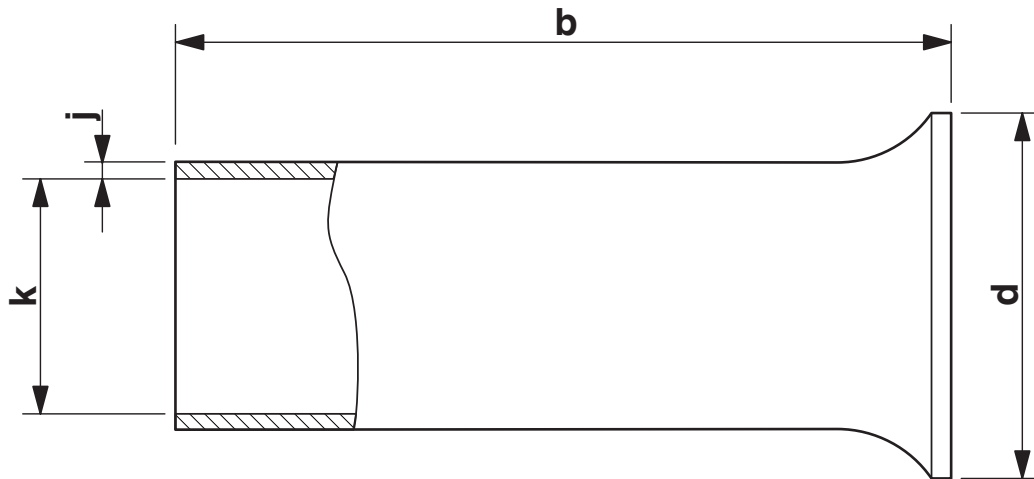
### Mechanical properties

#### Technical data

Sleeve length	18 mm
---------------	-------

## Drawings

Dimensional drawing



Sleeve length (b), insulating collar inner dimension (d), sleeve diameter (k), sleeve wall thickness (j)

# A 50-18 - Ferrule

2100025

<https://www.phoenixcontact.com/gb/products/2100025>



## Approvals

🔗 To download certificates, visit the product detail page: <https://www.phoenixcontact.com/gb/products/2100025>



**cULus Listed**

Approval ID: E488001

# A 50-18 - Ferrule



2100025

<https://www.phoenixcontact.com/gb/products/2100025>

## Classifications

### ECLASS

ECLASS-13.0	27400201
-------------	----------

### ETIM

ETIM 9.0	EC000005
----------	----------

# A 50-18 - Ferrule

2100025

<https://www.phoenixcontact.com/gb/products/2100025>



## Environmental product compliance

### EU RoHS

Fulfills EU RoHS substance requirements	Yes, No exemptions
---	--------------------

### China RoHS

Environment friendly use period (EFUP)	EFUP-E
	No hazardous substances above the limits

### EU REACH SVHC

REACH candidate substance (CAS No.)	No substance above 0.1 wt%
-------------------------------------	----------------------------

Phoenix Contact 2025 © - all rights reserved  
<https://www.phoenixcontact.com>

PHOENIX CONTACT Ltd  
Halesfield 13, Telford  
Shropshire, TF7 4PG  
01952 681700  
[info@phoenixcontact.co.uk](mailto:info@phoenixcontact.co.uk)