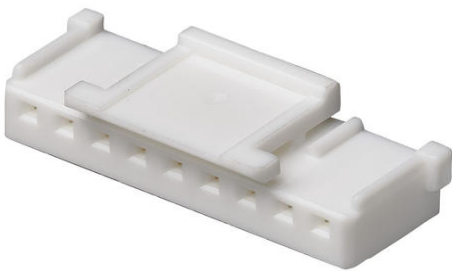




Part Number : [355070900](#)
Product Description : 2.00mm Pitch Sherlock Wire-to-Board Housing, Natural, 9 Circuits
Series Number : 35507
Status : Not Recommended For New Design
Product Category : Connector Housings



Documents & Resources

Drawings


[355070900_sd.pdf](#)
[355070900_stp.zip](#)

Specifications

[355070200-100.pdf](#)
[PK-35507-001-001.pdf](#)
[PS-35507-001-001.pdf](#)
[PS-35507-003-001.pdf](#)

Product Environment Compliance

Compliance

GADSL/IMDS	Not Relevant
China RoHS	 per SJ/T 11365-2006
EU ELV	Not Relevant
Low-Halogen Status	Not Low-Halogen per IEC 61249-2-21
REACH SVHC	Not Contained per D(2025)4165-DC (25 June 2025)
EU RoHS	Compliant per EU 2015/863

Compliance Statements

- EU RoHS
- REACH SVHC
- Low-Halogen

Industry Documents

- IPC 1752A Class C
- IPC 1752A Class D
- Molex Product Compliance Declaration
- IEC-62474
- chemSHERPA (xml)

Substances of Interest

- PFAS

EU RoHS Certificate of Compliance

Additional Product Compliance Information

Part Details

General

Status	Not Recommended For New Design
Category	Connector Housings
Series	35507
Description	2.00mm Pitch Sherlock Wire-to-Board Housing, Natural, 9 Circuits
Application	Signal, Wire-to-Board
Product Name	Sherlock
UPC	800753877665

Agency

CSA	LR19980
UL	E29179

Physical

Circuits Detail	9
Circuits (maximum)	9
Color - Resin	Natural
Flammability	94V-0
Gender	Receptacle
Glow-Wire Capable	No
Keying to Mating Part	None
Lock to Mating Part	Yes
Material - Resin	Polyester

Net Weight	0.400/g
Number of Rows	1
Packaging Type	Bag
Panel Mount	No
Pitch - Mating Interface	2.00mm
Polarized to Mating Part	Yes
Stackable	No
Temperature Range - Operating	-40° to +105°C

Mates With / Use With

Mates with Part(s)

Description	Part Number
Sherlock Vertical Headers	<u>35362</u>
Sherlock Right-Angle Headers	<u>35363</u>

Use with Part(s)

Description	Part Number
Micro-Latch Female Crimp Terminals	<u>50212</u>