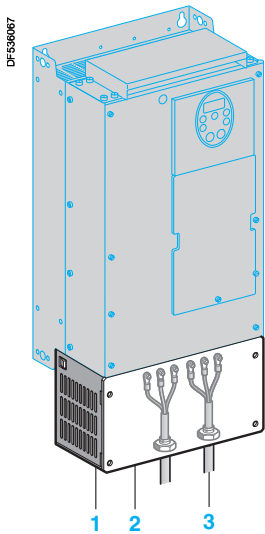


Variable speed drives for asynchronous motors

Altivar 21

Option: dialogue accessories



UL Type 1 conformity kit

Kit for UL Type 1 conformity (mounting outside the enclosure)

When the drive is mounted directly on a wall outside the enclosure, this kit can be used to ensure UL Type 1 conformity when connecting the cables with a tube. The shielding is connected inside the kit.

The kit consists of:

- All the mechanical parts 1 including a pre-cut plate 2 for connecting the tubes 3
- Fixing accessories
- A manual

References

For drives	Reference	Weight kg
ATV 21H075M3X...HU22M3X ATV 21H075N4...HU22N4	VW3 A31 814	0.500
ATV 21HU30M3X, HU40M3X ATV 21HU30N4...HU55N4	VW3 A31 815	0.500
ATV 21HU55M3X, HU75M3X ATV 21HU75N4, HD11N4	VW3 A31 816	0.900
ATV 21HD11M3X...HD18M3X ATV 21HD15N4, HD18N4	VW3 A31 817	1.200
ATV 21HD22M3X ATV 21HD22N4, HD30N4	VW3 A9 206	4.000
ATV 21HD37N4, HD45N4	VW3 A9 207	5.000
ATV 21HD30M3X ATV 21HD55N4, HD75N4	VW3 A9 208	7.000

Kit for mounting on L rail

This kit allows easy installation of the ATV 21H075M3X...HU22M3X and ATV 21H075N4...HU22N4 drives by mounting them directly on a 35 mm wide L rail.

Reference

For drives	Reference	Weight kg
ATV 21H075M3X...HU22M3X ATV 21H075N4...HU22N4	VW3 A31 852	0.350

PCSoft software workshop

This PC software workshop is a user-friendly tool for setting up Altivar 21 drives.

It includes different functions such as:

- Configuration preparation
- Setup
- Maintenance

It can be downloaded free of charge from the Internet at "www.telemecanique.com".

It operates in the following PC environments and configurations:

- Microsoft Windows® 98, Microsoft Windows® 2000, Microsoft Windows® XP
- Pentium® 233 MHz or higher, hard disk with 10 MB available, 32 MB RAM
- 256 colour, 640 x 480 pixels or higher definition monitor

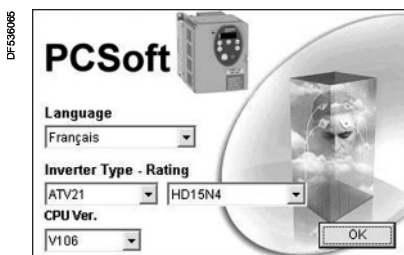
Connection

The PCSoft software workshop must be connected directly to the Modbus port on the drive using the PC serial port connection kit.

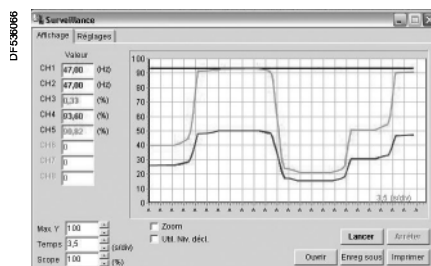
Note: It is not possible to use the PCSoft software workshop and a communication option card simultaneously. To be able to use the PCSoft software workshop when the drive is equipped with a communication card, the network or communication bus must be deactivated.

Reference

Description	Composition	Reference	Weight kg
PC serial port connection kit	<ul style="list-style-type: none"> ■ 1 x 3 m cable with 2 RJ45 connectors ■ 1 RS 232/RS 485 converter with one 9-way female SUB-D connector and 1 RJ45 connector 	VW3 A8 106	0.350



PCSoft software workshop



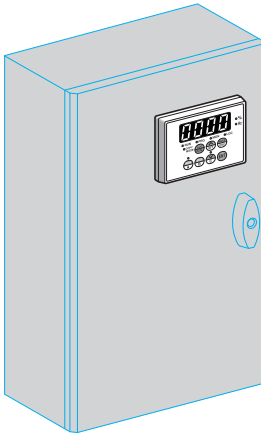
PCSoft software workshop "Monitoring" function

Variable speed drives for asynchronous motors

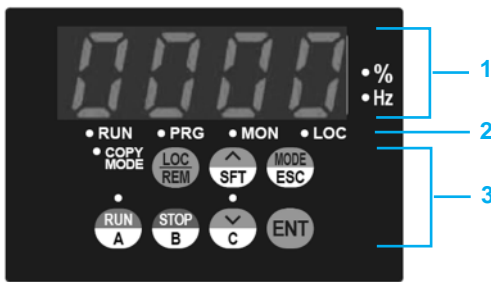
Altivar 21

Option: dialogue

DF536006



Terminal on enclosure door



Front panel of the remote display terminal

Remote display terminal

The Altivar 21 drive can be connected to a remote display terminal. The display terminal can be mounted on the door of an enclosure with IP 50 protection on the front panel. The maximum operating temperature is 40°C.

Two types of operation are available:

- **REMOTE KEYPAD MODE:** This provides access to the same functions as the integrated 7-segment terminal and can be used:
 - To control, adjust and configure the drive remotely
 - For remote display
- **COPY MODE:** Configurations can be stored and downloaded (three configuration files can be stored).

Depending on the operating mode selected, the following keys have different functions:

- \wedge /SFT
- MODE/ESC
- RUN/A
- STOP/B
- \vee /C

Note: It is not possible to use the remote display terminal and a communication option card simultaneously. To be able to use the remote display terminal when the drive is equipped with a communication card, the network or communication bus must be deactivated.

Description

1 Display:

- Four 7-segment displays visible at 5 m
- Display of numeric values and codes
- The display flashes when a value is stored
- Unit rating of displayed value
- The display flashes to indicate a fault on the drive

2 Display of drive status:

- RUN: Run command is active or speed reference present
- PRG: Drive in automatic mode
- MON: Drive in monitoring mode
- LOC: Drive in local mode
- COPY MODE: COPY MODE selected

3 Use of keys:

- LOC/REM: Switching of the drive command, locally or remotely
As a "local" command, the speed reference can be modified using the \wedge and \vee keys; the LED located between these keys lights up.
- \wedge /SFT, depending on the operating mode selected:
 - Vertical navigation in the menu or editing of values
 - Access to functions for managing parameters (copy, comparison, protection) or to display terminal memories
- MODE/ESC, depending on the operating mode selected:
 - To adjust and program drive parameters, access to monitoring mode
 - To abort a value or parameter to return to the previous state
- RUN/A, depending on the operating mode selected:
 - Local motor run command; LED indicates that the RUN key is active
 - Copy terminal memory "A"
- STOP/B, depending on the operating mode selected:
 - Local control of motor stopping/drive fault clearing
 - Copy terminal memory "B"
- \vee /C, depending on the operating mode selected:
 - Vertical navigation in the menu or editing of values
 - Copy terminal memory "C"
- ENT: Saves the current value or the selected function

Reference

Description	Reference	Weight kg
Remote display terminal	VW3 A21 101	0.250
Supplied with:		
■ 1 x 3.6 m cable with 2 RJ45 connectors		
■ Seal and screws for IP 50 mounting on an enclosure door		