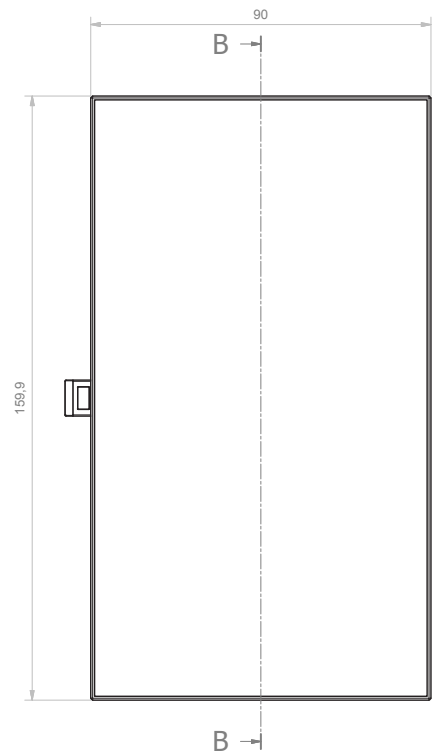
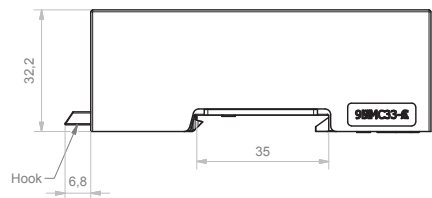


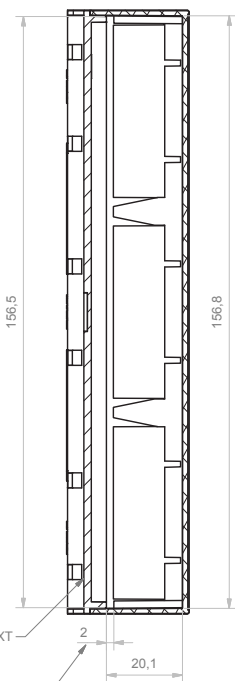
- DIN Rail mounting enclosure to suit varying electronic and electrical applications
- The enclosure has two high shoulders offering increased volume for components
- Openings for inputs/outputs can be cost effectively machined to customer specific requirements.
- Top panel is produced as part of the mould (non-removeable)
- Customisation options are available including machining



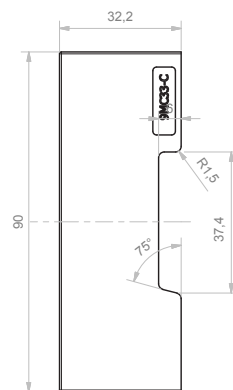
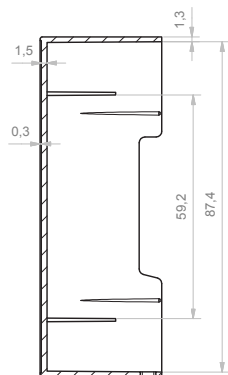
Assembly



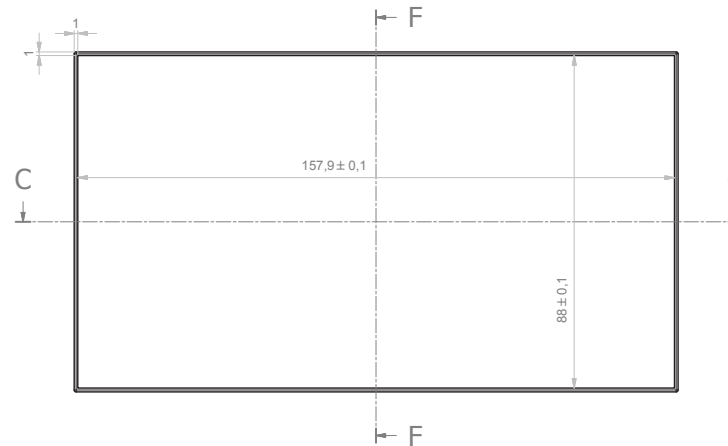
BASE 9M XT
max thickness of PCB



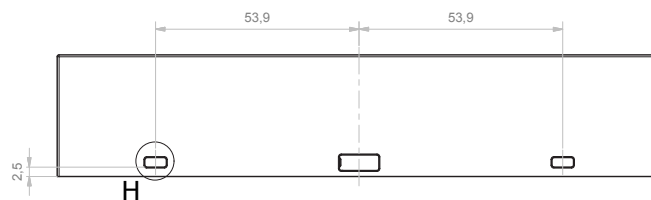
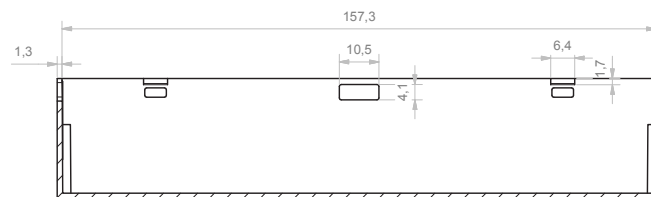
F-F (1:1)



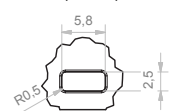
Body enclosure



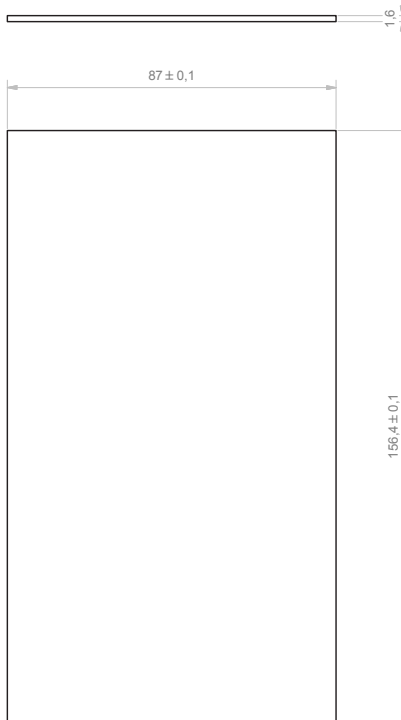
C-C (1:1)



H (2:1)



Dimension of PCB



Da 0,5 a 3	Oltre 3 fino a 6	Oltre 6 fino a 30	Oltre 30 fino a 120	Oltre 120
± 0,1	± 0,1	± 0,2	± 0,3	± 0,5

RESERVED PROPERTY
The present drawing cannot be reproduced or communicated to 3rd parties, even partially, without the authorization of ITALTRONIC Srl. Italtronic reserves to protect its own rights according to the law.

GENERAL TOLERANCE
UNI EN 22768/1
Media (m)

Date: 08/05/2014
Replace nr.
Scale:



Denomination:
Contentitore Modulbox XTS 9MC33-C chiuso compact
Enclosure Modulbox XTS 9MC33-C closed compact

Drawing nr.
M-05185-00

ITALTRONIC S.R.L.
VIA AUSTRIA 25/D 35127
PADOVA - ITALY
www.italtronic.com

5	4	3	2	1
---	---	---	---	---