



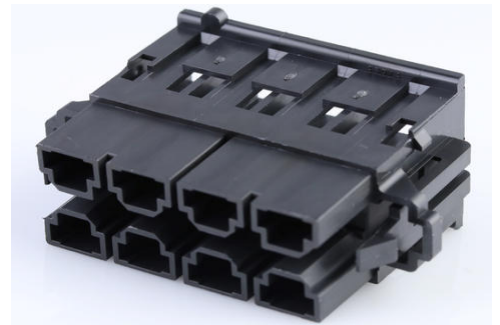
Part Number : [439141102](#)

Product Description : 10.00mm Pitch Mini-Fit Sr. Receptacle Housing, Dual Row, 8 Circuits, Black

Series Number : 43914

Status : Active

Product Category : Connector Housings



Documents & Resources

Drawings

[439141102_sd.pdf](#)

[PK-43914-001-001.pdf](#)

3D Models and Design Files

[STEP AP242](#)

[SOLIDWORKS](#)

[Creo](#)

Specifications


[PS-42815-001-001.pdf](#)

[TS-42815-001-001.pdf](#)

[TS-42815-004-001.pdf](#)

Product Environment Compliance

Compliance

GADSL/IMDS	Not Relevant
China RoHS	 per SJ/T 11365-2006
EU ELV	Not Relevant
Low-Halogen Status	Not Low-Halogen per IEC 61249-2-21
REACH SVHC	Not Contained per D(2025)4165-DC (25 June 2025)
EU RoHS	Compliant per EU 2015/863

[Compliance Statements](#)

- EU RoHS
- REACH SVHC
- Low-Halogen

Industry Documents

- IPC 1752A Class C
- IPC 1752A Class D
- Molex Product Compliance Declaration
- IEC-62474
- chemSHERPA (xml)

Substances of Interest

- PFAS

EU RoHS Certificate of Compliance

Additional Product Compliance Information

Part Details

General

Status	Active
Category	Connector Housings
Series	43914
Description	10.00mm Pitch Mini-Fit Sr. Receptacle Housing, Dual Row, 8 Circuits, Black
Application	Power, Wire-to-Board, Wire-to-Wire
Product Name	Mini-Fit Sr.
UPC	800753933668

Agency

CSA	LR19980
UL	E29179

Physical

Circuits (maximum)	8
Color - Resin	Black
Flammability	94V-0
Gender	Receptacle
Glow-Wire Capable	No
Material - Resin	Polyester

Net Weight	13.280/g
Number of Rows	2
Packaging Type	Bag
Panel Mount	No
Pitch - Mating Interface	10.00mm
Stackable	No
Temperature Range - Operating	-40° to +105°C

Solder Process Data

Lead-Free Process Capability	N/A
------------------------------	-----

Mates With / Use With

Mates with Part(s)

Description	Part Number
Mini-Fit Sr. Vertical Dual Row Headers	<u>43915</u>
Mini-Fit Sr. Dual Row Plug Housings	<u>43938</u>

Use with Part(s)

Description	Part Number
Mini-Fit Sr. Dual Row Terminal Position Assurance (TPA) Retainers	<u>43980</u>