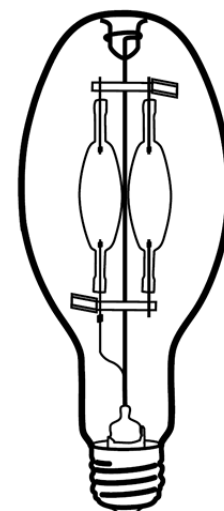


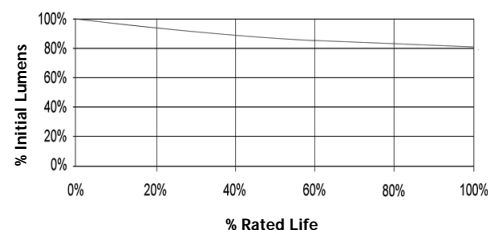
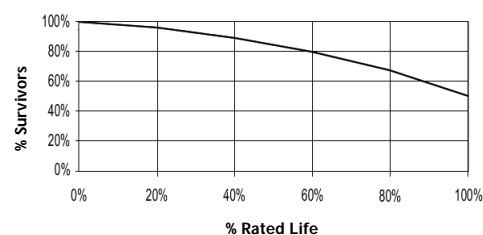
**HIE 250W/C/V/PS+S/737**
**Product Number: 52743**
**Lamp Type:** Pulse Start Sustainability

**Performance Data**

Light Output (Lumens @ 100 hours)	22600
Lamp Lumens Per Watt	90
Rated Life (Hrs. @ 10 Hr. /Start)	40000
Correlated Colour Temperature (K)	3700
Chromaticity (CIE - X Y)	395, 390
Colour Rendering Index (CRI) or (Ra)	70
Typical Warm Up Time (Minutes)	2-3
Typical Hot Restart Time (Minutes)	3-5
Burning Position	Vertical±15°


**Physical Data / Requirements**

Base Designation	E40
Bulb Designation	E90
Bulb Diameter (mm)	90
Max. Overall Length (mm)	215
Light Centre Length (mm)	131
Effective Arc Length (mm)	n/a
Max. Base Temperature (°C)	250
Max. Bulb Temperature (°C)	400
Luminaire Type	Enclosed
Socket Pulse Rating (KV)	4.5
Mercury Content (mg)	46.2

**Lumen Maintenance**

**Lamp Mortality**

**Lamp Electrical Data / Requirements**

IEC Standard	-
Lamp Wattage (W)	250
Lamp Operating Voltage (V)	133
Lamp Operating Current (Amps)	2.1
Min. Open Circuit Voltage (RMS)	198
Min. Starting Pulse (Peak V)	3000-4500
Min. Pulse Width at 2700V (microseconds)	1
Min. Pulse Rate Per ½ cycle	1
Pulse Position (Electrical Degrees)	60-90, 240-270

**Revision:** 01.06.12

**Notes:**

1) This Product Specification contains data about typical performance at nominal power. Actual values may depend on ballast and applications. Complies with (CE), Low Voltage (CE), WEEE and RoHS Directives.