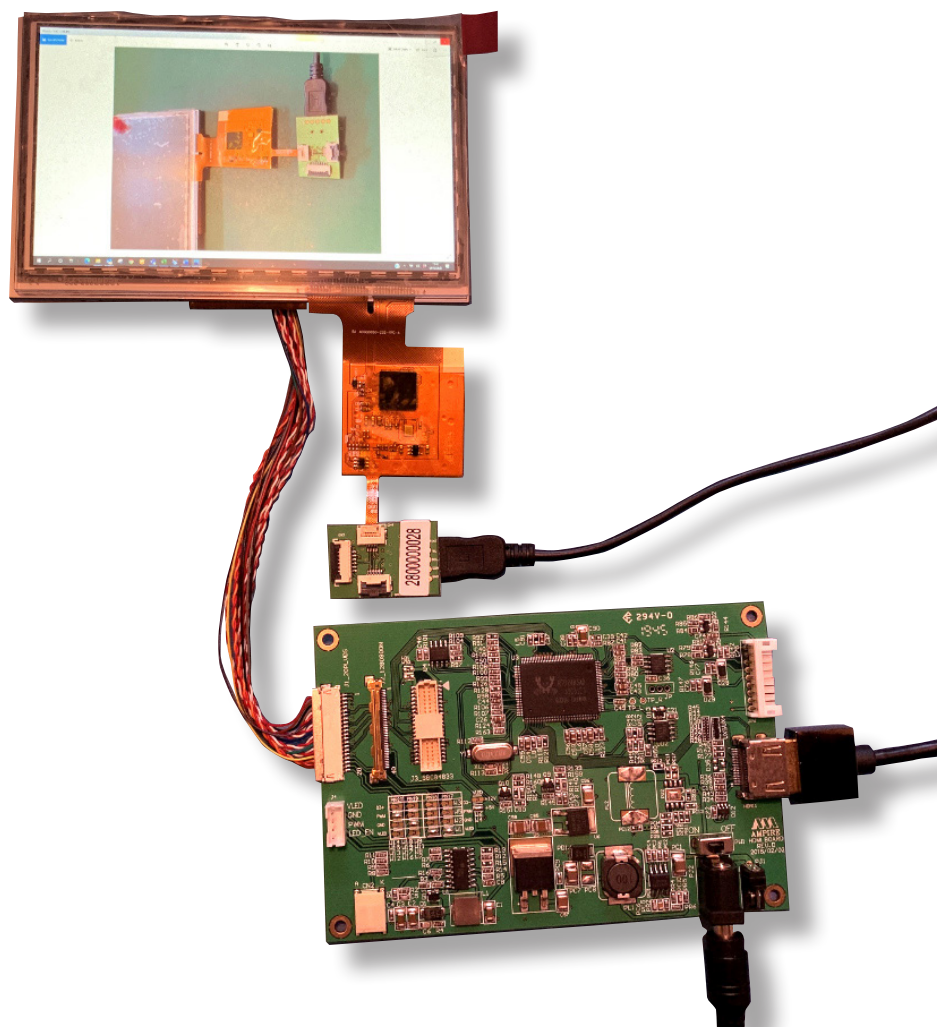


Quick Start Guide

AM-800480N6TZQW-T06H

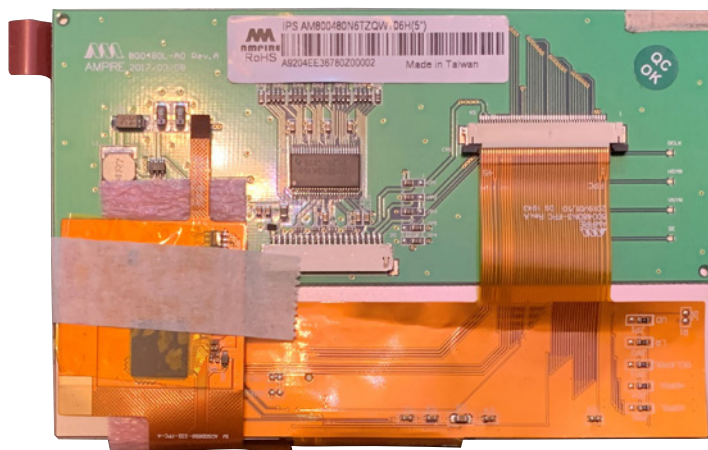


CONTENTS

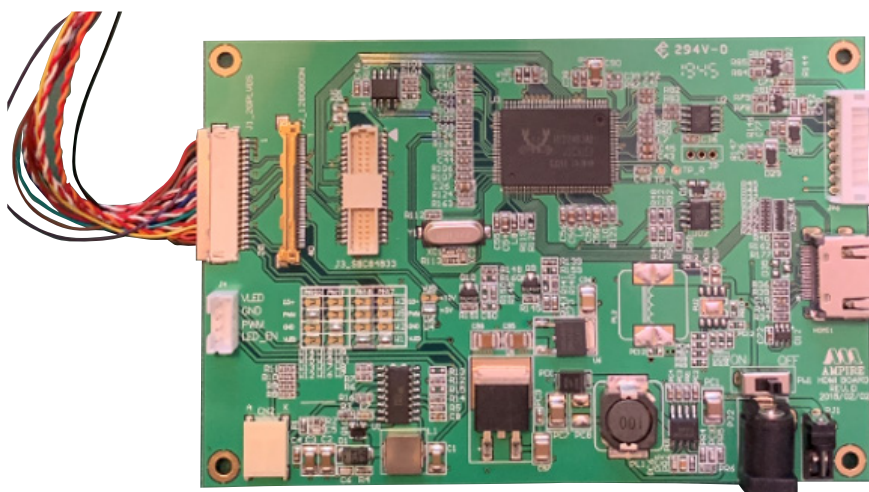
Kit Content	page 2	Connect the driver card to the power supply and HDMI source	page 4
Required Parts not Supplied in Kit	page 2	Part 2: Connecting the touch panel	page 6
Part 1: Connecting the driver card to the display	page 3		

KIT CONTENTS

Item	Description	Qty
1	Display with touch panel	1
2	Driver card	1
3	USB adapter card	1

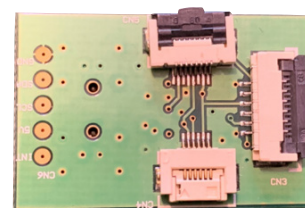


Display with touch panel



Driver card

USB adapter card



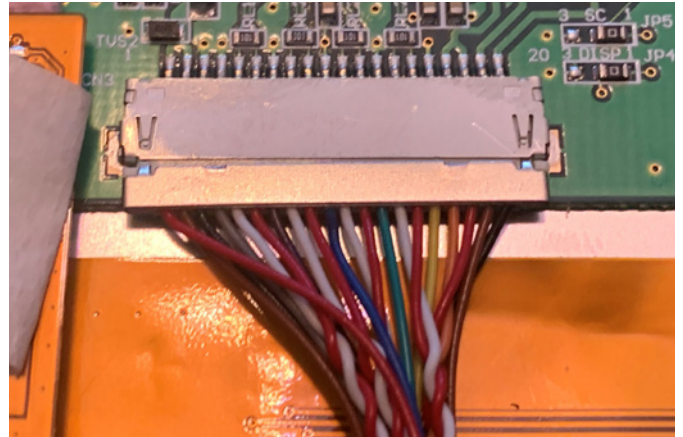
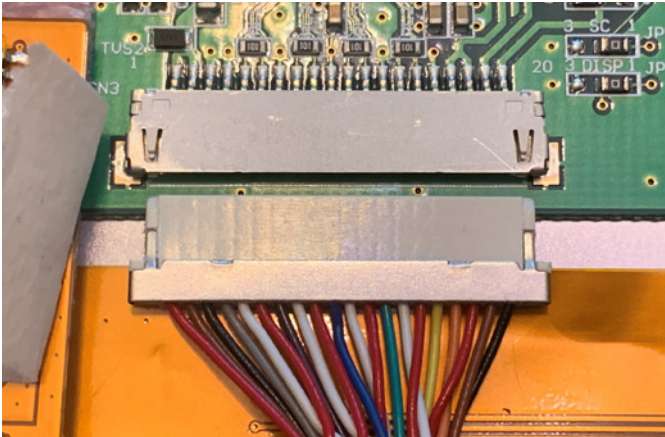
REQUIRED PARTS NOT SUPPLIED IN THE KIT

Item	Description	RS Part Number
1	12V 2A Power supply with 2.1 mm x 5.5mm DC Jack	144-0971
2	Generic USB mini lead	193-2871

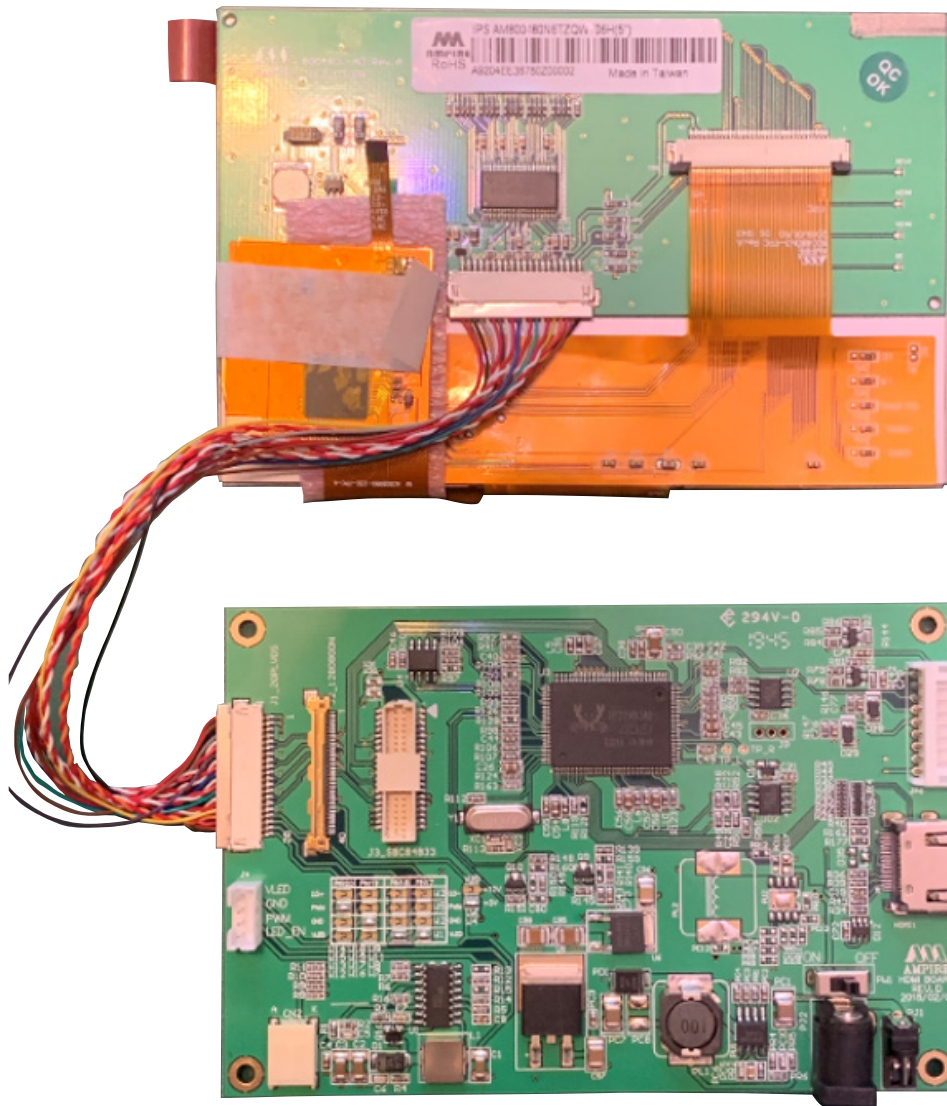
PART 1: CONNECTING THE DRIVER CARD TO THE DISPLAY

Connect the LVDS connector from the driver card to the back of the LCD.

Take care to line up the pins and use the correct orientation as per the picture below.

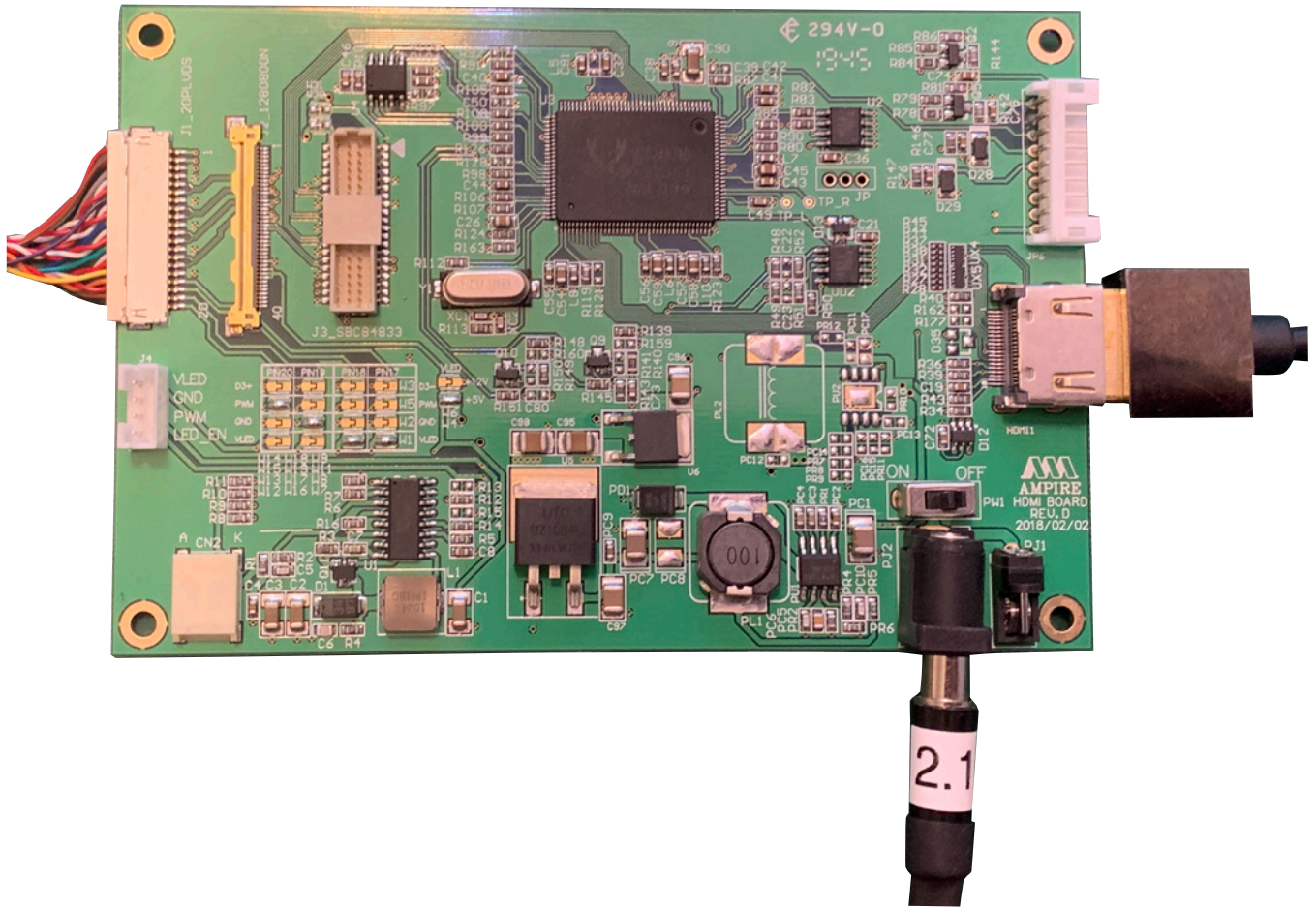


It should look like this when the connector is correctly installed.

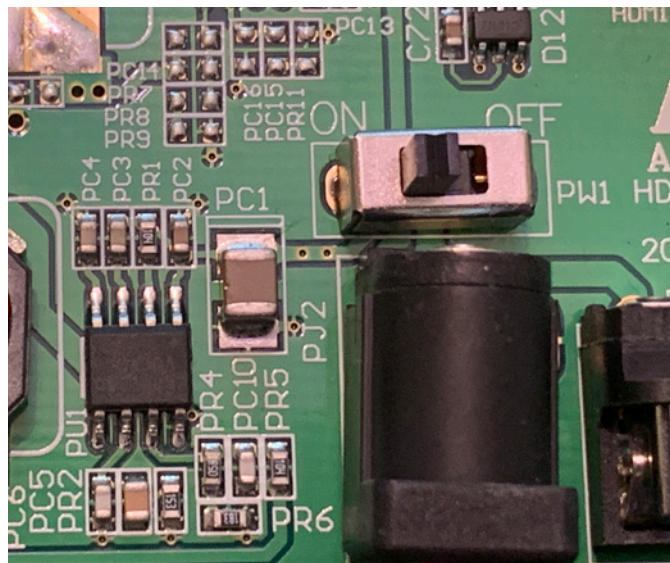


CONNECTING THE DRIVER CARD TO THE POWER SUPPLY AND HDMI SOURCE

Connect the power connector to the 12V DC power supply using a 2.1mm connector with centre positive and barrel negative.
Connect the HDMI connector to your source.



Turn the power switch to the ON position.

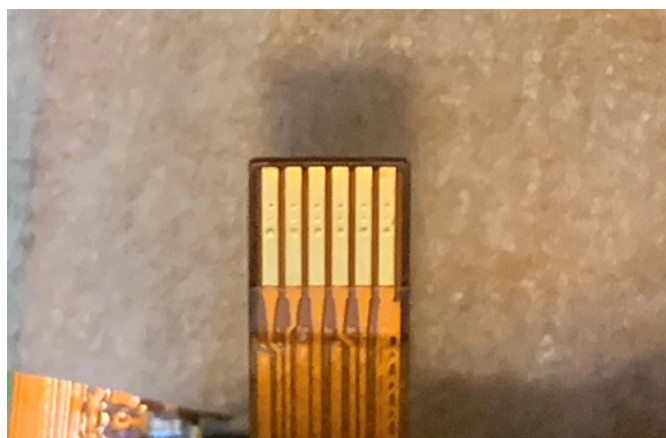
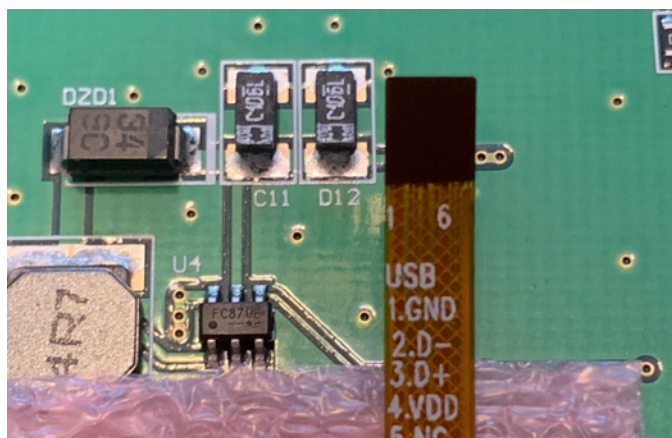


CONNECTING THE DRIVER CARD TO THE POWER SUPPLY AND HDMI SOURCE

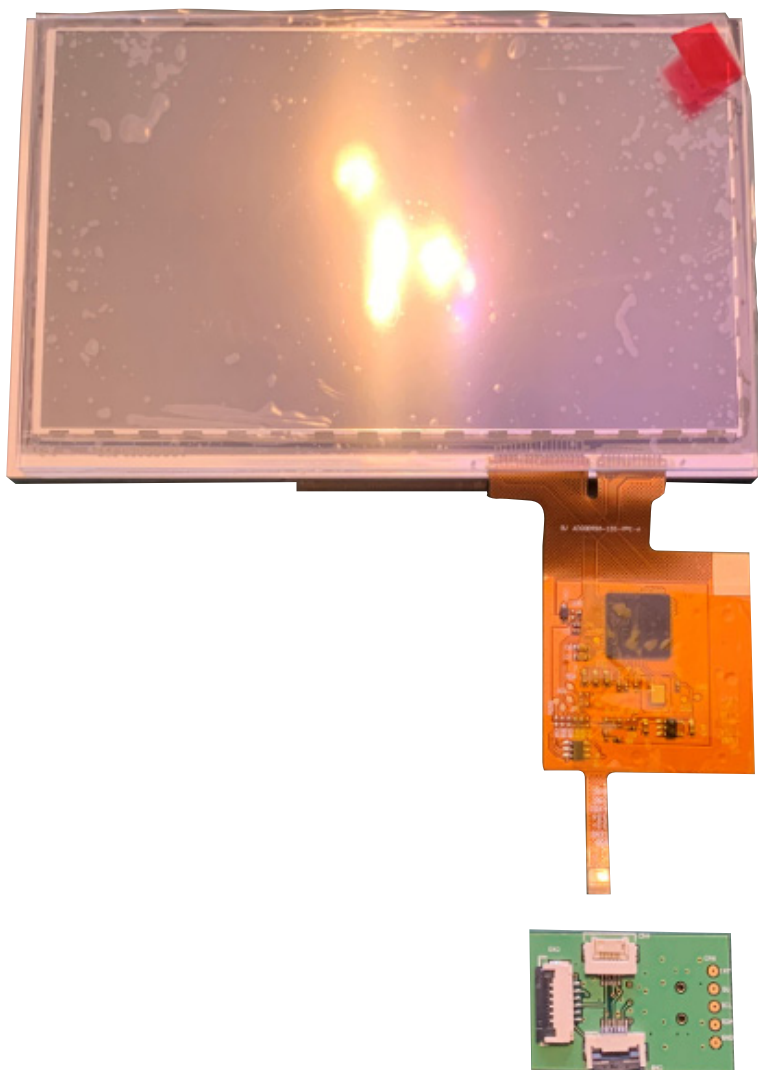


PART 2: CONNECTING THE TOUCH PANEL

The display has an FFC tail with the USB connections.

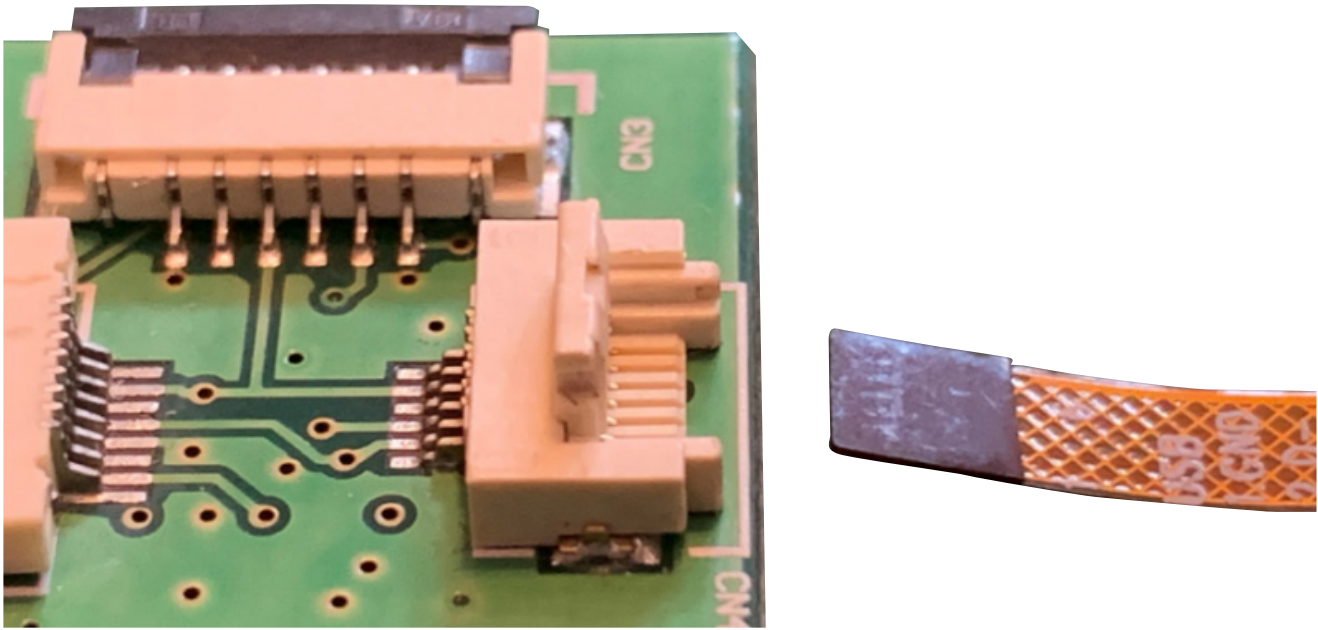


Remove any packing foam and tape to release the touch control board from the back of the display.
Place the display face up and line up the small USB connector PCB.

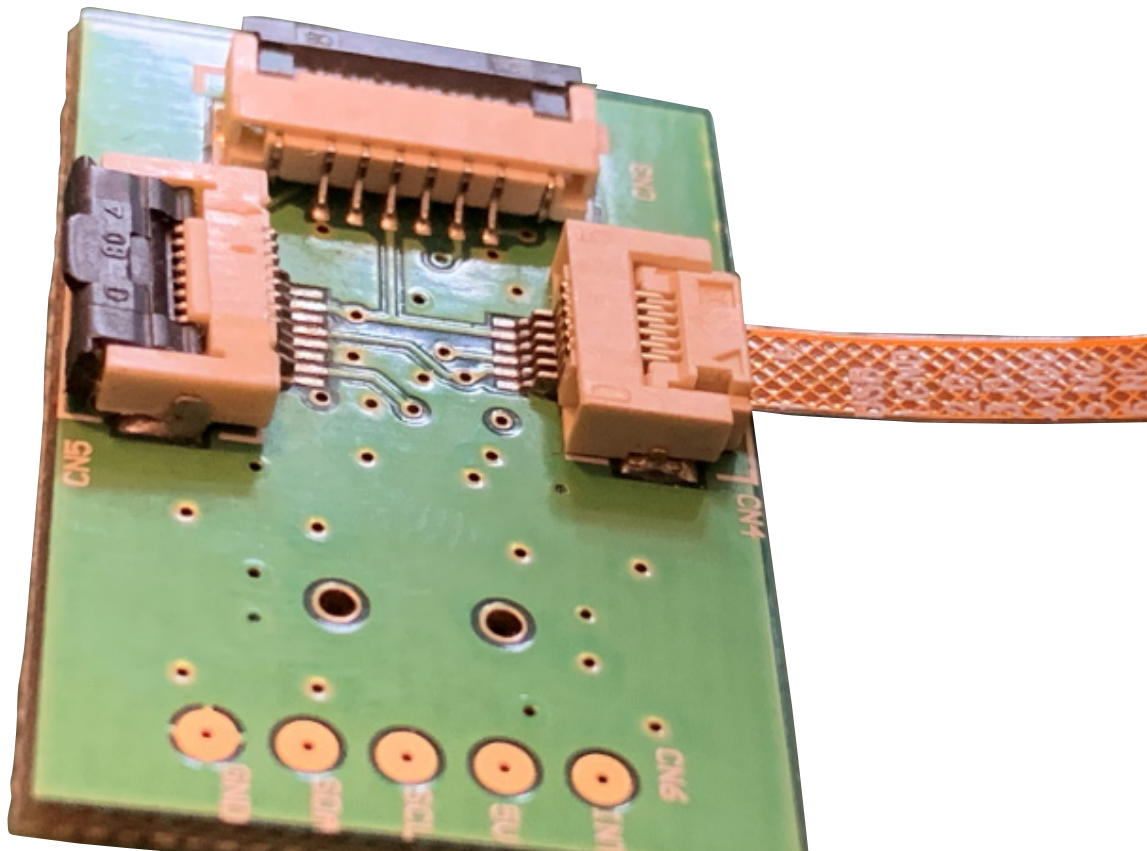


PART 2: CONNECTING THE TOUCH PANEL

Locate CN4 on the PCB and carefully lift up the flap.

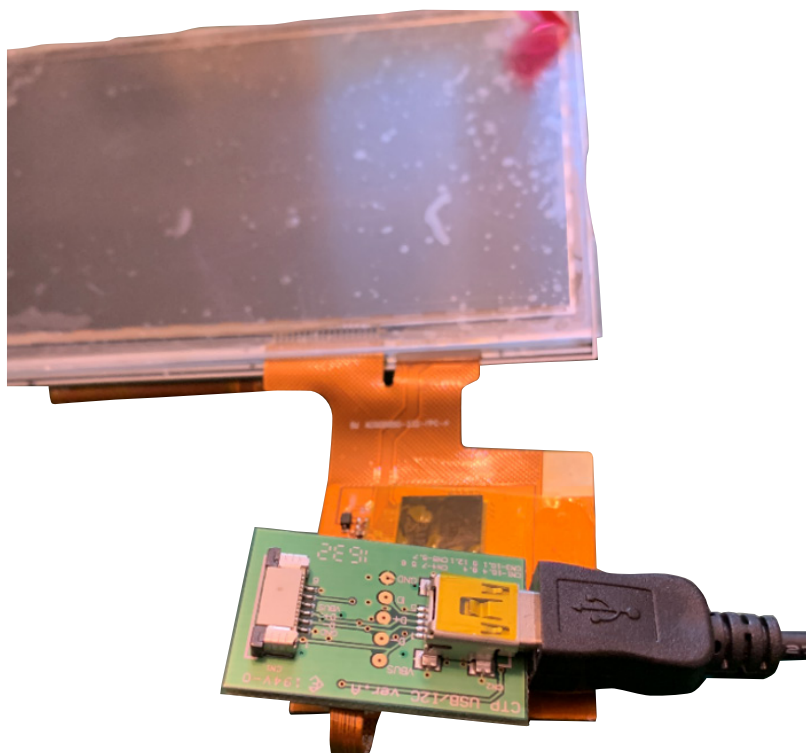


Note the orientation of the FFC and the PCB, it must be connected the correct way round or damage may occur. Push the FFC tail into the connector far enough so that the dark strengthening section is all the way in, and close the flap.

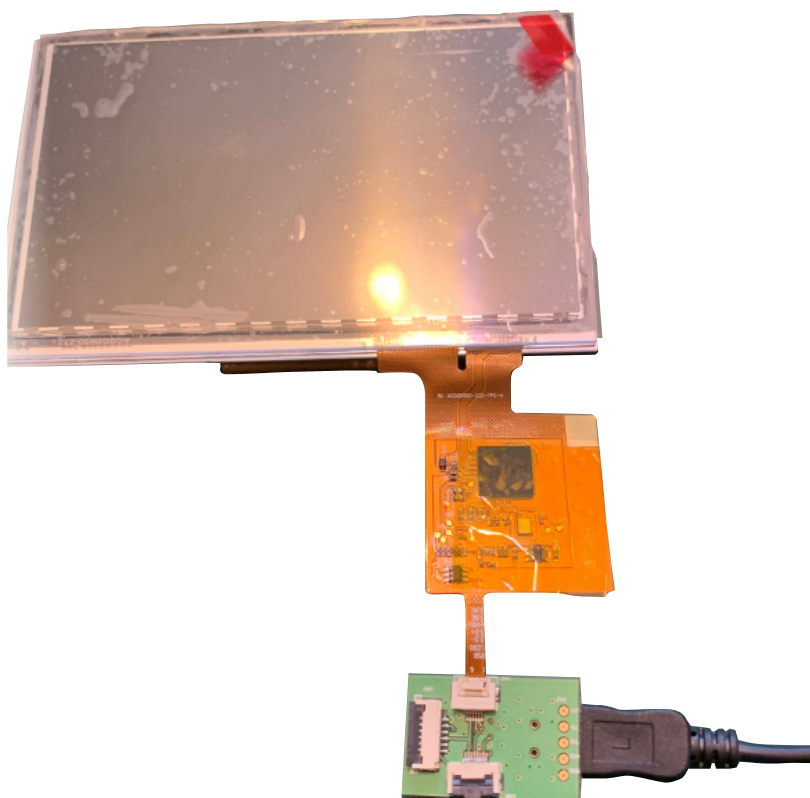


Turn the PCB over and connect a USB Mini lead.

PART 2: CONNECTING THE TOUCH PANEL



The touch panel can now be connected to a PC and will be automatically installed by MS Windows10.



The FFC tail and controller are very fragile and easily torn. It is recommended that once connected to the breakout board everything is secured to the back of the display using tape. This will reduce any strain on the FPC material.

FURTHER INFORMATION

The values contained in this data sheet can change due to technical innovation. Any such changes will be made without separate notification.

If you require further assistance or have a specific or custom enquiry, please contact the IDS team via email or phone. Alternatively please visit our website for more product info and to see our full range.



Unit 2, Berkshire Business Centre,
Berkshire Drive, Thatcham,
Berkshire, RG19 4EW

+44 (0)1635 294600

info@i-lcd.com

www.i-lcd.com

ABOUT IDS

Intelligent Display Solutions was established in 2001 by display industry experts. We have extensive knowledge of both the technical and user interface approaches to designing displays for various applications, using LCD, TFT and OLED technologies. We work with our customers to develop new and innovative displays - some award-winning - to enhance their products.

IDS is a division of Intelligent Group Solutions Ltd (IGS) - a well-established, respected, industry-leading Optoelectronics solutions provider. Much of IGS' business comes from providing semi-custom or custom products, both in component and sub-assembly form. We offer design support and prototyping within the European marketplace, with the capability to deliver production displays to wherever in the world the customer's manufacturing or assembly is being undertaken.

INTELLIGENT GROUP SOLUTIONS DIVISIONS

