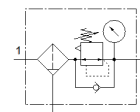
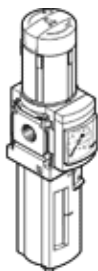


filter regulator MS4-LFR-1/8-D6-ERM-AS

Part number: 529164

FESTO



Data sheet

Feature	Value
Size	4
Series	MS
Actuator lock	Rotary knob with lock with accessories, lockable
Assembly position	Vertical +/- 5°
Grade of filtration	40 µm
Condensate drain	manual rotary
Design structure	Filter regulator with pressure gauge
Max. condensate volume	19 ml
Controller function	Output pressure constant with secondary exhaust with return flow
Bowl guard	Plastic guard
Pressure gauge	with pressure gauge
Operating pressure	0.8 ... 14 bar
Pressure regulation range	0.3 ... 7 bar
Max. pressure hysteresis	0.25 bar
Standard nominal flow rate	1,000 l/min
Operating medium	Compressed air to ISO 8573-1:2010 [-:4:-] Inert gases
Corrosion resistance classification CRC	2 - Moderate corrosion stress
Storage temperature	-10 ... 60 °C
Air purity class at output	Compressed air in accordance with ISO8573-1:2010 [7:4:4]
Medium temperature	-10 ... 60 °C
Ambient temperature	-10 ... 60 °C
Product weight	275 g
Mounting type	Optional Front panel installation Line installation with accessories
Pneumatic connection, port 1	G1/8
Pneumatic connection, port 2	G1/8
Materials note	Conforms to RoHS
Material of connecting plate	Aluminium die cast
Material control panel	PA POM
Material seals	NBR
Material filter	PE
Material housing	Aluminium die cast
Material membrane	NBR
Material bowl	PC
Material separating plate	POM