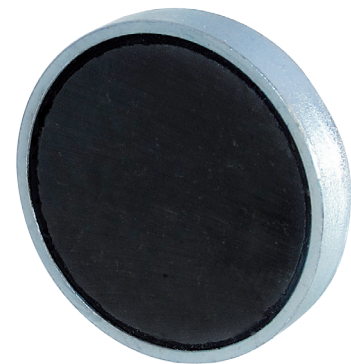


Ferrite Shallow Pot Magnets Male Thread



The external threaded stud pot magnet is also known as a male threaded pot magnet. They consist of a ferromagnetic mild steel cup containing a magnet (usually a disc magnet) with a ferromagnetic mild steel threaded bar or threaded bush or threaded bush at the back of the pot magnet. A nut can then be used to secure the external threaded stud pot magnet to any assembly with a hole in it (by passing the threaded section through the hole).



- 120° maximum operating temperature
- Excellent resistance to corrosion
- Mild steel pot with zinc plated body

RS PART NO	ECLIPSE PART NO	PULL FORCE (kg)	Dia (mm)	Height (mm)	Weight (kg)	Thread	DESCRIPTION
9175667	E720	3.5	22	7	0.020	M5	22mm ferrite shallow Pot, male thread
9175661	E723	8.0	32	7	0.032	M5	32mm ferrite shallow Pot, male thread

All sizes and colours available from stock. Please get in touch for further information.

Eclipse Magnetics, Atlas Way, Sheffield, S4 7QQ, England
T +44(0)114 225 0613 info@eclipsemagnetics.com
F +44(0)114 225 0610 www.eclipsemagnetics.com



A world leader in magnetic technology

