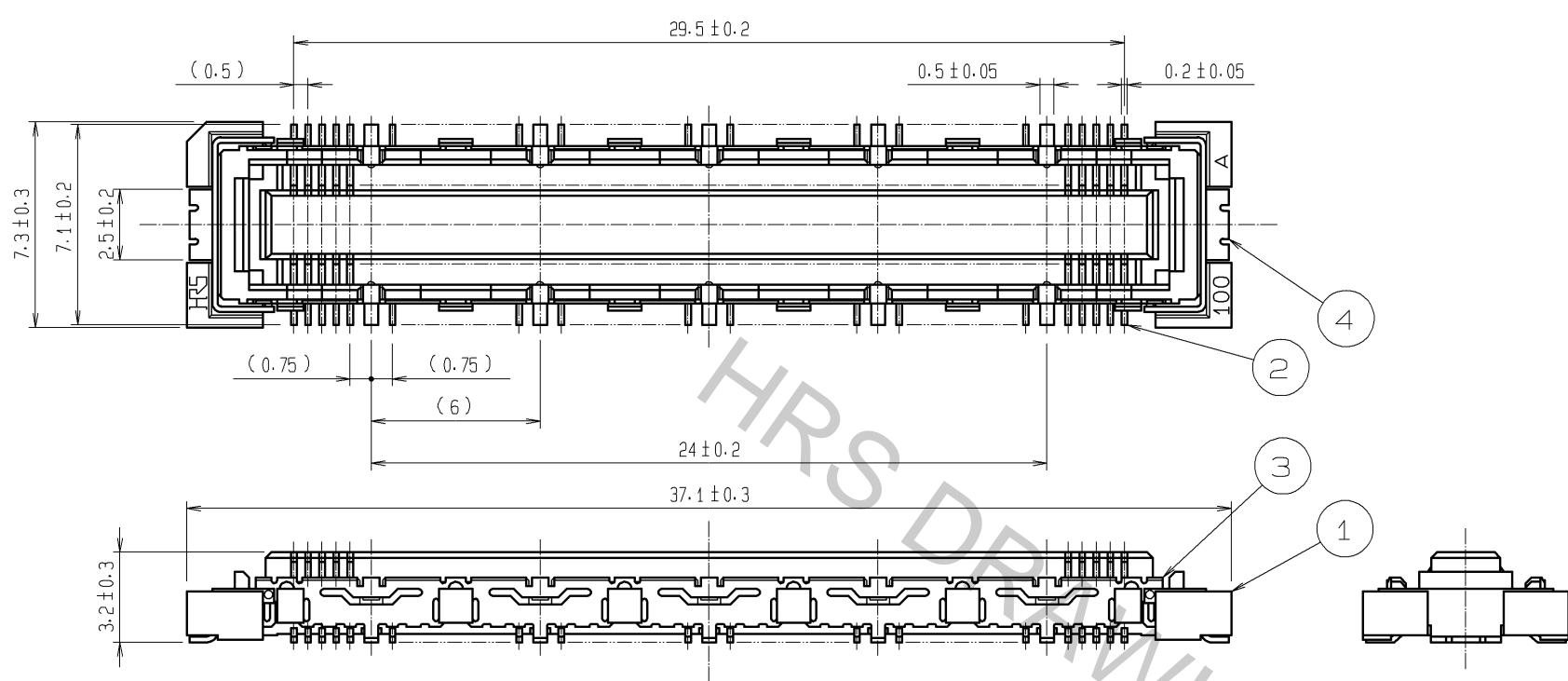
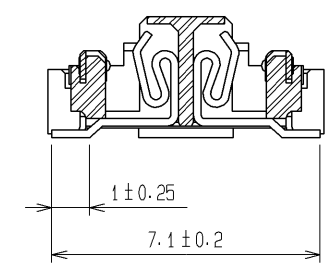


1 2 3 4 5 6 7 8

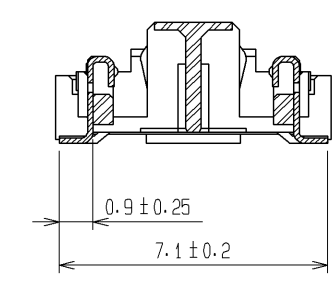
A
B
C
D
E
F



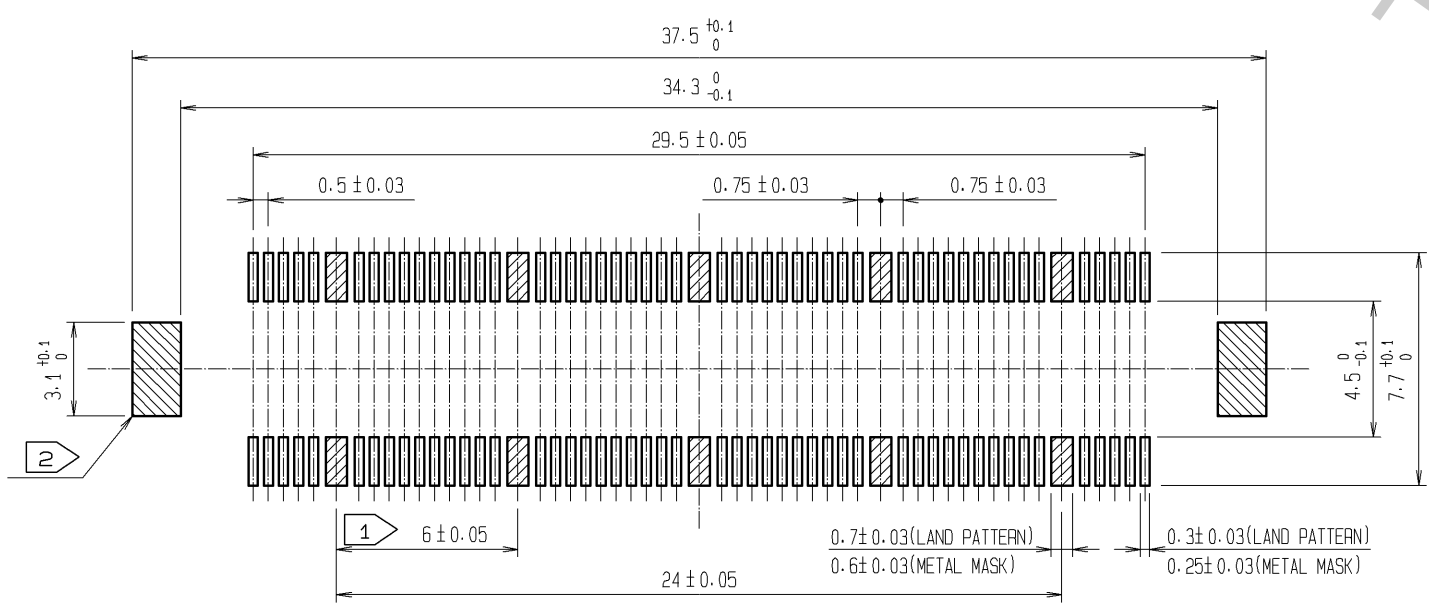
CROSS CUT SECTION - SIGNAL(5:1)



CROSS CUT SECTION - GROUND(5:1)



RECOMMENDED LAND PATTERN DIMENSION OF PCB
(RECOMMENDED METAL MASK THICKNESS:0.15mm)



- NOTES
- ① 10 HATCHED PARTS:GROUND CIRCUIT.
 - ② 2 HATCHED PARTS:GROUND CIRCUIT.
 - ③ SMT LEAD-COPLANARITY:0.1 MAX.
 - ④ THIS PRODUCT HAS NO POLARITY TO PATTERN FOR MOUNTING.
 - ⑤ THE DIMENSIONS IN PARENTHESES ARE FOR REFERENCE.

3, 4	PHOSPHOR BRONZE	TIN-PLATING
2	PHOSPHOR BRONZE	CONTACT AREA : GOLD 0.1µm min. LEAD AREA : GOLD FLASH UNDER PLATING : NICKEL 1µm min.
NO.	MATERIAL	FINISH, REMARKS

1	LCP	BEIGE	UL94V-0
NO.	MATERIAL	FINISH, REMARKS	
UNITS		SCALE	COUNT
mm		4 : 1	△
APPROVED : HS. OKAWA		08.06.26	DRAWING NO. EDC3-151981-25 PART NO. FX10B-100S/10-SV(71) CODE NO. CL570-0222-4-71
CHECKED : HT. YAMAGUCHI		08.06.25	
DESIGNED : SY. KAMIGA		08.06.23	
DRAWN : HK. SUNADORI		08.06.18	
HRS HIROSE ELECTRIC CO., LTD.			