

Housing - HC-HPR-B10-SHFH-2SSM32-EMR-BK - 1411096

Please be informed that the data shown in this PDF Document is generated from our Online Catalog. Please find the complete data in the user's documentation. Our General Terms of Use for Downloads are valid (<http://phoenixcontact.com/download>)



HEAVYCON B10 box mounting base, for screw locking, HPR series, with 2 x M32 gland, for increased environmental and EMC requirements



Key commercial data

Packing unit	1 pc
GTIN	4 046356 921565
Weight per Piece (excluding packing)	22.22 g
Custom tariff number	85389099
Country of origin	China

Technical data

Dimensions

Height	100 mm
Width	80 mm
Length	170 mm

Ambient conditions

Degree of protection of housing (IP)	IP68 (0.5 bar, 24 h)
	IP69K
Ambient temperature (operation)	-40 °C ... 125 °C

General

Note	For contact inserts HC-B10, BB18, DD42, M, K8/24
Type	B10
Housing type	Box mounting bases
Locking type	For screw locking
No. of cable outlets	2
Cable exit	Lateral
Screw connection	none
Type of the screw connection	2x M32

Housing - HC-HPR-B10-SHFH-2SSM32-EMR-BK - 1411096

Technical data

General

Protective cover	No
Housing material	Aluminum die-cast
Housing surface material	Powder-coated, black
Seal material	NBR

Classifications

eCl@ss

eCl@ss 5.1	27143424
eCl@ss 6.0	27261203
eCl@ss 8.0	27440202

ETIM

ETIM 4.0	EC000437
ETIM 5.0	EC000437

Approvals

Approvals

Approvals

EAC / GL

Ex Approvals

Approvals submitted

Approval details

EAC

GL

Accessories

Accessories

Extension adapter

Housing - HC-HPR-B10-SHFH-2SSM32-EMR-BK - 1411096

Accessories

Extension adapter - ENLAR-M-KV-M32/M40 - 1647682



Step-up adapter, M32 to M40, including O-ring

Full screw connection

Cable gland - G-INS-M32-M68N-PNES-GY - 1411127



Cable gland, Cable gland material: Polyamide 6, External cable diameter 15 mm ... 21 mm, Shielding: No, Connecting thread: M32, Color: silver grey

Cable gland - G-INS-M32-M68N-PNES-BK - 1411136



Cable gland, Cable gland material: Polyamide 6, External cable diameter 15 mm ... 21 mm, Shielding: No, Connecting thread: M32, Color: jet black

Cable gland - G-INS-M32-M68N-NNES-S - 1411166



Cable gland, Cable gland material: Brass, nickel-plated, External cable diameter 15 mm ... 21 mm, Shielding: No, Connecting thread: M32, Color: silver

Cable gland - HC-M-KV-M32(19-27) - 1646010



Metal screw connection up to 5 bar, thread length: 8 mm, cable diameter: 19 - 27 mm, WAF 43, screw connection: M32

Housing - HC-HPR-B10-SHFH-2SSM32-EMR-BK - 1411096

Accessories

Cable gland - G-INSEC-M32-M68N-NCRS-S - 1411191



Cable gland, Cable gland material: Brass, nickel-plated, External cable diameter 14 mm ... 21 mm, Shielding: Yes, Connecting thread: M32, Color: silver

Cable gland - HC-M-KV-Z-M32 - 1646162



Metal screw connection with strain relief clamp, thread length: 8 mm, cable sealing area: 18 - 27 mm, clamping area: 19 - 30 mm, SW 40, screw connection: M32

Cable gland - HC-M-KV-T-M32 - 1646201



Metal screw connection with cable bend protection and strain relief, thread length: 8 mm, cable sealing area: 18 - 27 mm, clamping area: 20 - 30 mm, SW 40, screw connection: M32

Plug for cable screw gland

Filler plugs - HC-M-BS-M32 - 1645862



Filler plug, metal, size: M32

Reducing adapter

Reducing adapter - REDUC-M-KV-M32/M25 - 1647637

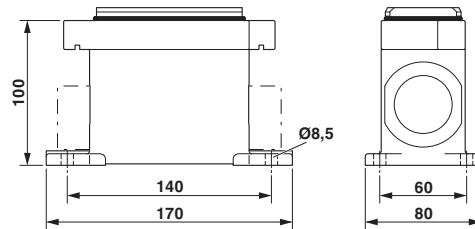


Reducing adapter, metal, M32 to M25, including O-ring

Drawings

Housing - HC-HPR-B10-SHFH-2SSM32-EMR-BK - 1411096

Dimensioned drawing



Dimensional drawing