

Description

STAINLESS STEEL BOLT HOLE CASTOR, BLUE ELASTIC RUBBER 100MM

Fixed

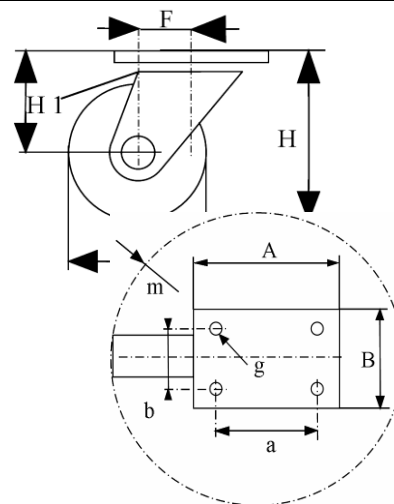
Part Number
Swivel
KP410A100-571RX



Part Number
Swivel and brake
KP410D100-571RX



	Fixed	Swivel	Swivel+brake
Wheel Diameter ØD	100 mm		
Overall Height H	128 mm ±1		
Center hole	13 mm		
Offset F ±1	\	39 mm	39 mm
Width of Tread	36 mm±0,5		
Hardness of tread	shore A ± 70°		
Load capacity	150 Kg		
Weight		0,7 kg	0,83 kg
Temperature	- 20 / + 60 °C		



Castor Assembly :

Pressed stainless steel -AISI 304-. Swivel on two rows of balls.
Central bolt hole fitting
Total lock. Metal pedal.

Wheel :

Wheel centre made of Black Polyamide.
Tread : Solid, Blue bonded elastic Rubber. Non marking.
Hub : Stainless steel roller bearing.

Features :

Low starting effort. High load capacity.
Smooth and quiet handling on all types of floors.
Absorbs shocks and vibrations. Resistant to wear.
100% anti-corrosion. Easy to clean. Specially designed for humid environments.
Suited for Food industry, Hospital or Industrial Kitchen equipment.
Non staining blue rubber.
Medium duty.