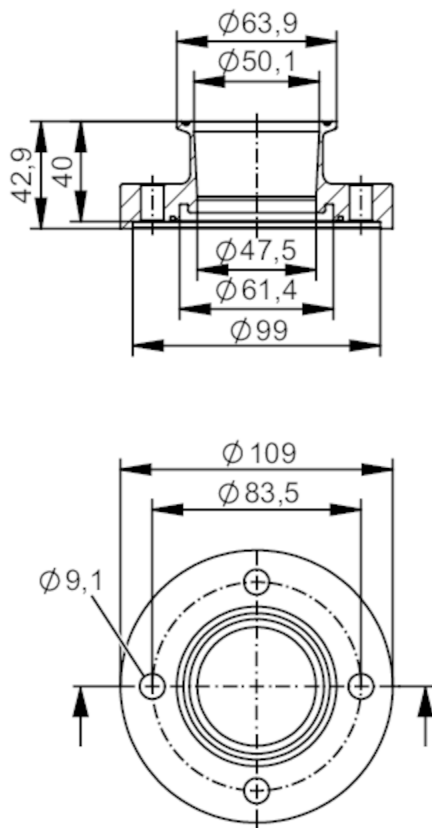




Process adapter clamp DIN 32676 series A

ADAPT DIN32676-A DN50



Application		
Design	for volumetric flow meters SMF	
Application	food and beverage industry; hygienic systems	
Pressure rating	16 bar	1.6 MPa
Tests / approvals		
Pressure Equipment Directive	A possible classification to PED depends on the application and has to be carried out by the user / operator.	
Safety instructions	The compatibility between medium and product material has to be checked in all applications.	
Mechanical data		
Weight	[g]	2580.7
Materials	stainless steel (316L/1.4404)	
Nominal diameter	DN50 (2")	
Sensor connection	ifm-specific device flange	
Process connection	Clamp DIN 32676 series A (ISO)	
Process connection suitable for pipe standard	(DIN EN 10357 series A); (DIN 11866 series A); (DIN 11850 series 1); (DIN 11850 series 2)	
Surface characteristics Ra/Rz of the wetted parts	Ra ≤ 0.4 µm	

E40493



Process adapter clamp DIN 32676 series A

ADAPT DIN32676-A DN50

Accessories	
Items supplied	screws 8
Remarks	
Pack quantity	2 pcs.