

**Ordering number CA11387_EMILY-SS**

Family	Emily	FWHM	10 degrees
Type	Assembly	Efficiency	(simulated) 0 %
LED	Z5	cd/Im	-
Color	Clear	Gerber File	Available
Diameter	26 mm		
Height	15.15 mm		
Style	Round		
Optic Material	PMMA		
Holder Material	-		
Fastening	Pin, tape		
Status	Ready		

**Ordering number CA11388_EMILY-M**

Family	Emily	FWHM	18 degrees
Type	Assembly	Efficiency	(simulated) 0 %
LED	Z5	cd/Im	-
Color	Clear	Gerber File	Available
Diameter	26 mm		
Height	15.15 mm		
Style	Round		
Optic Material	PMMA		
Holder Material	-		
Fastening	Pin, tape		
Status	Ready		

**Ordering number CA11391_EMILY-M2**

Family	Emily	FWHM	28 degrees
Type	Assembly	Efficiency	(simulated) 0 %
LED	Z5	cd/Im	-
Color	Clear	Gerber File	Available
Diameter	26 mm		
Height	15.15 mm		
Style	Round		
Optic Material	PMMA		
Holder Material	-		
Fastening	Pin, tape		
Status	Ready		

**Ordering number CA11934_EMILY-W**

Family	Emily	FWHM	40 degrees
Type	Assembly	Efficiency	86 %
LED	Z5	cd/Im	-
Color	Clear	Gerber File	Available
Diameter	26 mm		
Height	14.9 mm		
Style	Round		
Optic Material	PMMA		
Holder Material	-		
Fastening	Pin, tape		
Status	Ready		

**Ordering number CA11389_EMILY-O**

Family	Emily	FWHM	44+10 degrees
Type	Assembly	Efficiency	(simulated) 0 %
LED	Z5	cd/lm	-
Color	Clear	Gerber File	Available
Diameter	26 mm		
Height	15.15 mm		
Style	Round		
Optic Material	PMMA		
Holder Material	-		
Fastening	Pin, tape		
Status	Ready		

Ordering number CA11390_EMILY-O-90

Family	Emily	FWHM	44+10 degrees
Type	Assembly	Efficiency	(simulated) 0 %
LED	Z5	cd/lm	-
Color	Clear	Gerber File	Available
Diameter	26 mm		
Height	15.15 mm		
Style	Round		
Optic Material	PMMA		
Holder Material	-		
Fastening	Pin, tape		
Status	Ready		

NOTE: The typical divergence will be changed by different color, chip size and chip position tolerance. The typical total divergence is the full angle measured where the luminous intensity is half of the peak value.



PRODUCT DATASHEET

Emily series

last update 2/7/2012



GENERAL INFORMATION

- Product series especially designed & optimized for Z5 series of LEDs.
- Special care taken to make light distribution as uniform as possible.
- Lens material optical grade PMMA with high UV and temperature resistance. Allows use of high current and temperature conditions.

Please find more information about used material from below:

http://ledil.fi/sites/default/files/Documents/Technical/Material/PMMA%20N%20UL94_Yellow%20Card.pdf

<http://ledil.fi/sites/default/files/Documents/Technical/Material/PMMA%20N%20PLEXIGLAS-Datasheet.pdf>

D C B A

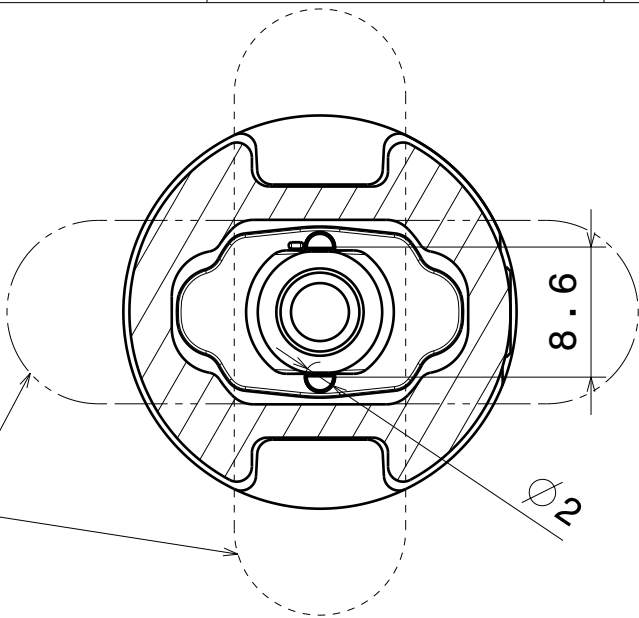
4

Bottom view

4

Beam direction Emily-0-90

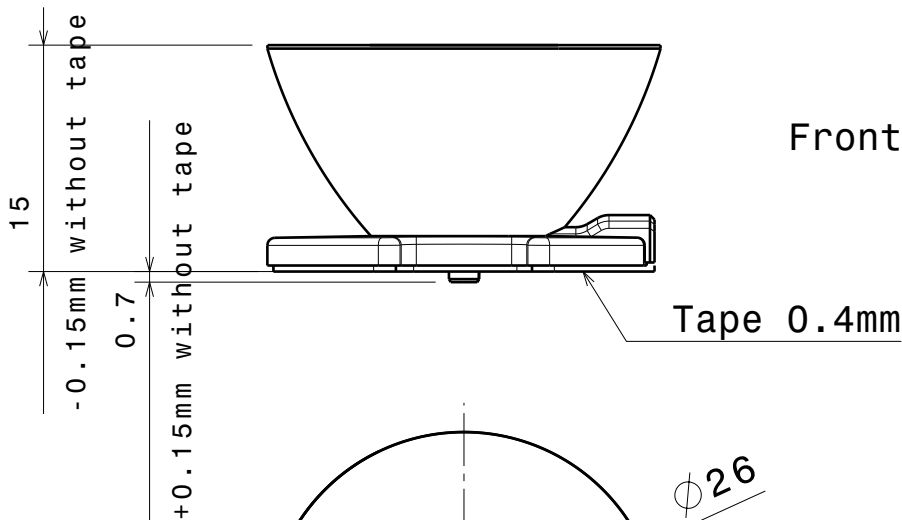
Beam direction Emily-0



3

Front view

3



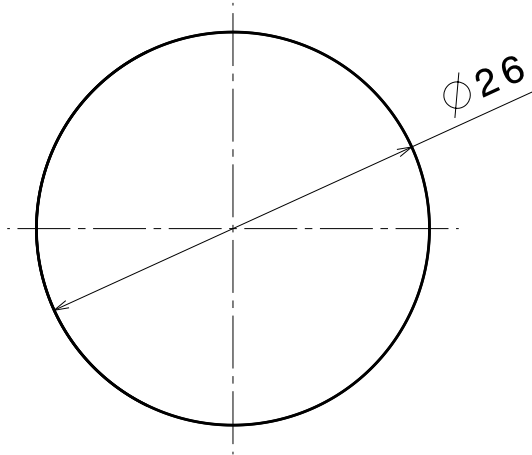
2

Top view

2

Materials:
Lens PMMA
Tape PU Foam with
adhesive

Part no.s:
CA11387_Emily-SS
CA11388_Emily-M
CA11389_Emily-0
CA11390_Emily-0-90
CA11391_Emily-M2



This drawing is our property.
It can't be reproduced
or communicated without
our written agreement.



L
S
F
F

e
a
i
n

d
l
i

o
a

a

DRAWING TITLE

Datasheet Emily Series Lens

DRAWN BY

p

DATE

22.5.2012

CHECKED BY

t

k

DATE

18.02.2010

DESIGNED BY

hh

DATE

18.02.2010

SIZE

A4

DRAWING NUMBER

REV

1

SCALE

2:1

WEIGHT (g)

SHEET

1/1

1

1

D

A