

WHEEL Z 200X50+50 BB SWIVEL FORK G80

Wheel series Z

Cast iron wheels with polyurethane coating 95 Sh.A available with shielded precision ball bearings.
 Wheel fitted with ball bearings.

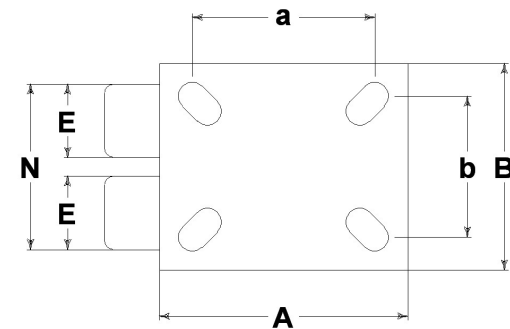
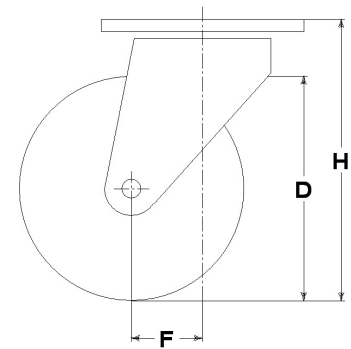
Castor series G80

Twin fork assemblies fabricated from heavy gauge sheet steel; swivelling with a thrust and taper roller bearings. Finish: blue paint.



Technical data

Wheel diameter	D	200 mm
Tyre width	E	50,0 mm
Bearing seat diameter	s	52 mm
Bore diameter	d	25 mm
Outer faces bearings distance	V	56 mm
Weight article		19,700 kg
Hub width	L	60 mm
Overall height	H	270 mm
Top plate outer dimensions	AxB	255x205 mm
Bolt hole spacing	axb	210x160 mm
Fixing bolt diameter	g	M16
Offset	F	70 mm
Fork width	U	126 mm
Load Capacity		2000 kg



Related Articles

Spare part wheel: [7031CC](#)
 Version with brake: [7474B2](#)

GENERAL INFORMATION / RECOMMENDATIONS AND WARNINGS

The cited text and the complete catalogue in their most up-dated versions are available in our web-site www.lagspa.it/downloads. The dimensions, descriptions, specifications and illustrations herein are indicative and subject to variations without notice. The fact that products are illustrated herein does not necessarily imply they are available from stock nor does it place us under any obligation to supply them. Tests carried out refer to the original products with original accessories: the replacement of one of the components with others of different manufacture might prevent the same results from being achieved and will automatically invalidate any guarantee. **Please contact our technical service concerning any special application.**