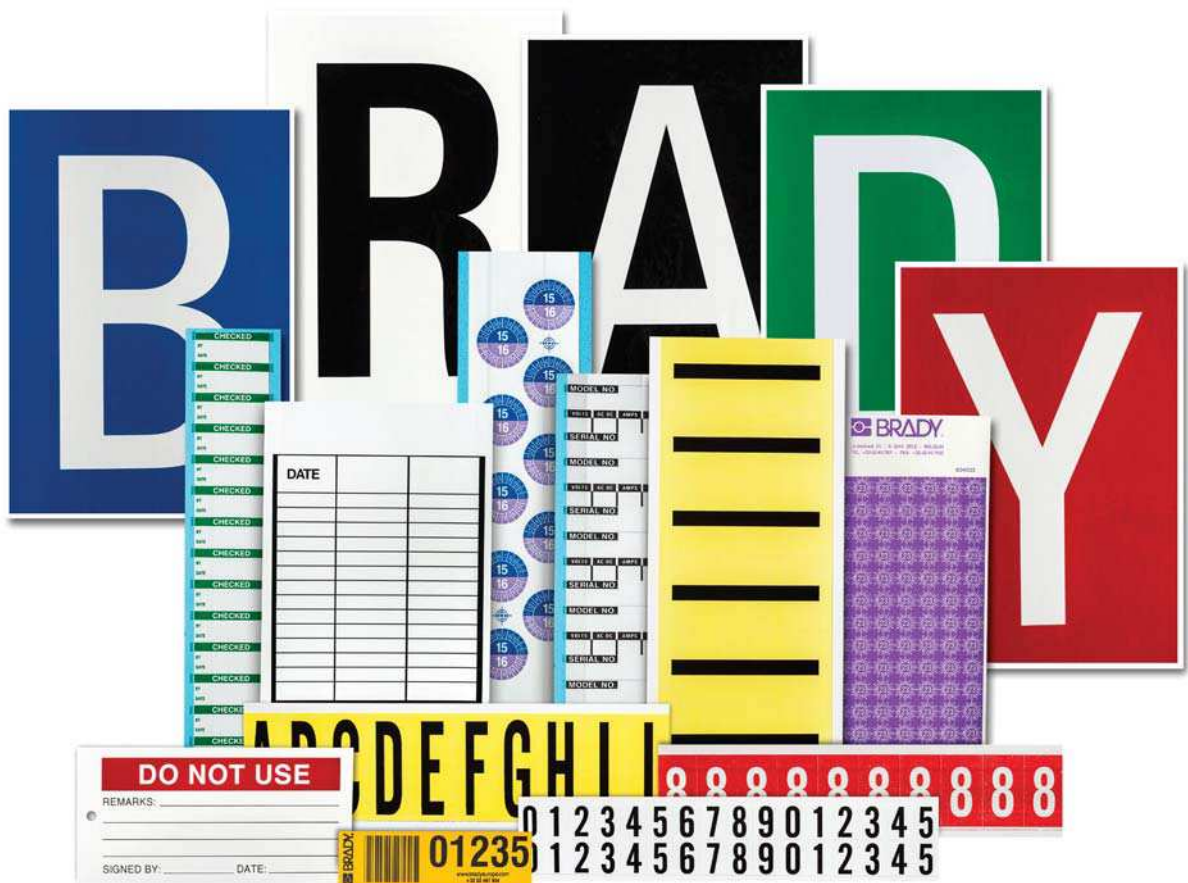




# Logistics & Calibration Labelling



# Logistics Labelling: Why?

All those who are professionally involved know that a well identified warehouse improves the efficiency of a company.

Clear, accurate and informative identification can be linked directly to improving general efficiency.

- Now, you too can benefit from our experience and improve your effectiveness!
- Are you forever trying to cope with unidentified racks?
- Do you need to combine bar codes, logos and text on one label?

**Brady will help you find the solution that works best for your environment!**



Numbered Panels: Loading Dock Panels, Gangway Panels, Bin Panels



Bin Location Labels



Bin Location Labels



Write-on Labels

## CONTENT:

Logistics labelling: why? . . . . .	2
Bin location labels . . . . .	3
Numbers & letters: introduction . . . . .	4
Numbers & letters: sizes . . . . .	5
Number & Letters for indoor use (B-500) . . . . .	6
Number & Letters for indoor & outdoor use (B-946) . . . . .	8
Numbers & Letters: Big Sizes . . . . .	9
Numbered Panels . . . . .	9
Bradyfoam™ Mounting Tape . . . . .	10
Make your own projecting or corridor warehouse signs. . . . .	10
Easy Number . . . . .	10
Paper Labels On A Roll . . . . .	10
Magnetic Numbers & Letters . . . . .	11
Blank Magnetic Strips & Labels . . . . .	12
Magnetic pouches . . . . .	13
Inspection Date Labels	
Standard Vinyl Date Labels . . . . .	14
Rectangular Vinyl Date Labels . . . . .	15
Tamper-evident Date Labels . . . . .	16
Polyester Date Labels . . . . .	17
Hole punch . . . . .	15
Write-on labels . . . . .	18
Pens . . . . .	18
Write-on Tags . . . . .	21
Brady Sign and Label Printers . . . . .	22

## BRADY Customize-it

Because of the variety of information that can be printed on these types of labels or panels, part numbers are not shown here.

Please contact your Brady Distributor who will pass the variable information onto us.

**HOW TO ORDER: SEE NEXT PAGES**

## BIN LOCATION LABELS

THESE LABELS ARE IDEAL FOR UNIQUE AND SPECIALISED IDENTIFICATION IN INDUSTRY AND WAREHOUSING

**Bin Location Labels can be used for numerous applications:**

- Clean and clear warehouse identification
- Machine labelling: internal numbering
- Product codification
- Inventory serialisation
- Alpha numeric coding
- Valve identification

Using these type of labels saves you a lot of time because we print the variable information on the labels for you. On one label you can combine variable text, part numbers, bar codes and logos. BRADY labels are manufactured quickly, efficiently and carefully, to meet your demands for clearer and more accurate methods of identification.

**Choose the size, the colour and the material you need.**

## HOW TO ORDER?

### 1 Select a material

- Laminated Polyester - Permanent Adhesive (B-7541)
- Laminated Polyester - Removable Adhesive (B-433)
- Magnetic (B-859)

### 2 Determine the appropriate size for your application.

### 3 Choose the appropriate colours. You may choose up to 4 from the following:



### 4 Determine the layout: please send us a sketch of how you would like the information to be positioned.

### 5 Determine the information you want to be printed:

- Serialised Numbers: starting point - end point - increment
- Bar codes
  - EAN 128
  - UPCA
  - 2/5 interleaved
  - Code 39
  - UPCE
- Text: number of characters and height, minimum character height = 2 mm.
- We can load digital information directly into our production machines (ASCII, Lotus, Excel or Dbase)

### 6 Determine total quantity per type of label.



## MATERIALS

- **Self-adhesive polyester with permanent adhesive (B-7541):** suitable for indoor and outdoor use. Has a clear polyester overlamine.
- **Self-adhesive polyester with removable adhesive (B-433):** label can be removed without leaving traces.
- **Magnetic material (B-859):** offers you complete flexibility when your warehouse changes its locations. Can be reused over and over again.

## OPTIONS

### Serialisation



### Multiple Print Directions



### Bar Codes



### Logos





## THE HIGHLY VISIBLE BLACK AND YELLOW MARKERS FROM BRADY!

DURABLE, WATERPROOF, NON-FADING, SCRATCH PROOF AND OIL RESISTANT

Brady's range of Numbers & Letters offer every company unlimited applications for labelling and marking. The highly visible characters improve safety by adding clarity, thus reducing any dangers caused by confusing or inadequate signage. Brady self-adhesive Numbers & Letters are made from either hard-wearing cloth coated with PVC (B-500 for the 3400 series) or from vinyl (B-946 for the 1500 series)

**They can be used for marking just about anything in the work place: boxes, signs, doors, windows, shelves, equipment, machines and spare parts.**



Brady Numbers & Letters for indoor applications (3400 series) are permanent, scratch proof and oil resistant.

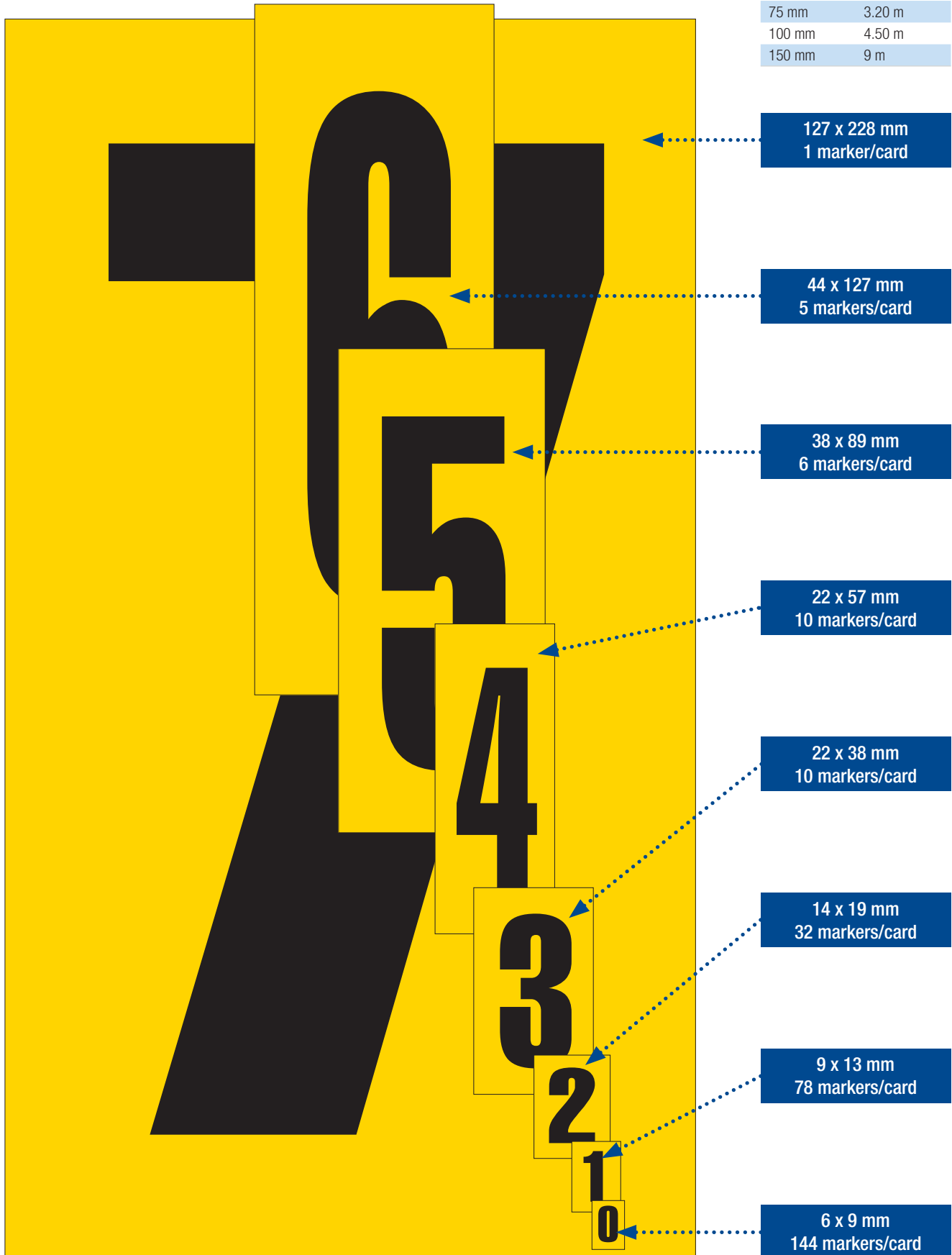
Brady Numbers & Letters for outdoor use (1500 series) are especially weather-proof and UV light resistant.

## FOR MARKING:

**WAREHOUSES • OFFICES • TOOLS • MACHINES  
RACKS • CUPBOARDS • SHELVES • BOXES  
OFFICE EQUIPMENT**



Character height	Readability Distance
25 mm	1.20 m
38 mm	1.80 m
50 mm	2.30 m
75 mm	3.20 m
100 mm	4.50 m
150 mm	9 m



# Number & Letters for indoor use (B-500)

## IDENTICAL NUMBERS OR LETTERS ON ONE CARD



**i** Series 3420, 3430, 3440 and 3450 + NL + CNL: hyphens (DSH) and arrows (ARO) are available  
 Series 3400, 3410, 3460, 3470: hyphens (DSH) are available, but no arrows.

- Ordering: In place of the asterisk, simply add the suffix for desired letters (A-Z), numbers (0-9), hyphens (DSH) or arrows (ARO) to the order reference shown in the table
- Packaging: 25 identical cards per pack
- Material: Vinyl cloth (B-500)

Order Ref.	Colour	Height x Width (mm)	Character Height (mm)	Quantity
3400-*	Black on Yellow	9.00 x 6.00	6.3	144/Card
NL-W05-*	Black on White	13.00 x 9.00	8.0	78/Card
3410-*	Black on Yellow	13.00 x 9.00	8.0	78/Card
NL-W75-*	Black on White	19.00 x 14.00	16.0	32/Card
3420-*	Black on Yellow	19.00 x 14.00	16.0	32/Card
NL-W15-*	Black on White	38.00 x 22.00	25.0	10/Card
3430-*	Black on Yellow	38.00 x 22.00	25.0	10/Card
CNL1B-*	White on Blue	38.00 x 22.00	25.0	10/Card
CNL1G-*	White on Green	38.00 x 22.00	25.0	10/Card
CNL1GR-*	White on Grey	38.00 x 22.00	25.0	10/Card
CNL1O-*	White on Orange	38.00 x 22.00	25.0	10/Card
CNL1R-*	White on Red	38.00 x 22.00	25.0	10/Card
NL-W225-*	Black on White	57.00 x 22.00	49.0	10/Card
3440-*	Black on Yellow	57.00 x 22.00	49.0	10/Card
CNL 2B-*	White on Blue	57.00 x 22.00	49.0	10/Card
CNL 2G-*	White on Green	57.00 x 22.00	49.0	10/Card
CNL 2GR-*	White on Grey	57.00 x 22.00	49.0	10/Card
CNL 2OR-*	White on Orange	57.00 x 22.00	49.0	10/Card
CNL 2R-*	White on Red	57.00 x 22.00	49.0	10/Card
3450-*	Black on Yellow	89.00 x 38.00	75.0	6/Card
3460-*	Black on Yellow	127.00 x 44.00	98.0	5/Card
3470-*	Black on Yellow	228.00 x 127.00	152.0	1/Card

## COMBINATION PACKS: ASSORTED MARKERS ON A DISPENSER CARD

- Ordering: By part numbers and type
- Packaging: 25 cards per pack (26 cards per pack for order reference 034751 and 034752)
- Material: Vinyl cloth (B-500)



Order Ref.	Colour	Height x Width (mm)	Character Height (mm)	Quantity	Number of Markers per Number/Letter
<b>Letters A-Z</b>					
034051	Black on Yellow	9.00 x 6.00	6.3	144/Card	Pack contains 400 pcs A & E, 300 pcs B, 200 pcs C & D, 100 pcs F thru Z
034151	Black on Yellow	13.00 x 9.00	8.0	78/Card	Pack contains 75 pcs A thru Z
034251	Black on Yellow	19.00 x 14.00	16.0	32/Card	Pack contains 50 pcs A thru F, 25 pcs G thru Z
034351	Black on Yellow	38.00 x 22.00	25.0	10/Card	Pack contains 17 pcs A,B, C and E, 9 pcs D, F thru J, 8 pcs K thru Z
034451	Black on Yellow	57.00 x 22.00	49.0	10/Card	Pack contains 17 pcs A,B, C and E, 9 pcs D, F thru J, 8 pcs K thru Z
034551	Black on Yellow	89.00 x 38.00	75.0	6/Card	Pack contains 10 pcs A thru C, E, 5 pcs D & F thru Z
034651	Black on Yellow	127.00 x 44.00	98.0	5/Card	Pack contains 6 pcs A & E, 5 pcs B,C,D F thru Y, 3 pcs Z
034751	Black on Yellow	228.00 x 127.00	152.0	1/Card	Packs contains 1 pc A thru Z
<b>Numbers 0-9</b>					
034052	Black on Yellow	9.00 x 6.00	6.3	144/Card	Pack contains 400 pcs 0 thru 5, 300 pcs 6 thru 9
034152	Black on Yellow	13.00 x 9.00	8.0	78/Card	Pack contains 225 pcs 0 thru 5, 150 pcs 6 thru 9
034252	Black on Yellow	19.00 x 14.00	16.0	32/Card	Pack contains 100 pcs 0 thru 5, 50 pcs 6 thru 9
034352	Black on Yellow	38.00 x 22.00	25.0	10/Card	Pack contains 25 pcs 0 thru 9
034452	Black on Yellow	57.00 x 22.00	49.0	10/Card	Pack contains 25 pcs 0 thru 9
034552	Black on Yellow	89.00 x 38.00	75.0	6/Card	Pack contains 25 pcs 0 & 1, 15 pcs 2 thru 5, 10 pcs 6 thru 9
034652	Black on Yellow	127.00 x 44.00	98.0	5/Card	Pack contains 15 pcs 1 thru 5, 10 pcs 6 thru 9 & 0
034752	Black on Yellow	228.00 x 127.00	152.0	1/Card	Pack contains 3 pcs 1 thru 5, 2 pcs 6 thru 9 & 0

## CONSECUTIVE MARKERS

- Ordering: By part numbers
- Packaging: 1 series per pack (25 identical cards per pack) Consecutive B-500 markers contain numerical or alphabetical sequences on the same card. Small marker sizes contain complete numerical or alphabetical sequences. Larger sized cards break the alphabet into three parts: A–J, K–T and U–Z
- Material: Vinyl cloth (B-500)



Order Ref.	Colour	Height x Width (mm)	Character Height (mm)	Quantity	Number of Markers per Number/Letter
<b>Letters A-Z</b>					
034138	Black on Yellow	13.00 x 9.00	10.0	78/Card	Pack contains 75 pcs A thru Z
<b>Letters A-J</b>					
034340	Black on Yellow	38.00 x 22.00	26.0	10/Card	Pack contains 25 pcs A thru J
034440	Black on Yellow	57.00 x 22.00	50.0	10/Card	Pack contains 25 pcs A thru J
<b>Letters K-T</b>					
034341	Black on Yellow	38.00 x 22.00	26.0	10/Card	Pack contains 25 pcs K thru T
034441	Black on Yellow	57.00 x 22.00	50.0	10/Card	Pack contains 25 pcs K thru T
<b>Letters U-Z</b>					
034342	Black on Yellow	38.00 x 22.00	26.0	10/Card	Pack contains 50 pcs U to X, 25 pcs Y to Z
034442	Black on Yellow	57.00 x 22.00	50.0	10/Card	Pack contains 50 pcs U to X, 50 pcs Y to Z
<b>Numbers 0-9</b>					
034010	Black on Yellow	9.00 x 6.00	6.3	144/Card	Pack contains 400 pcs 0 thru 5, 300 pcs 6 thru 9
034110	Black on Yellow	13.00 x 9.00	10.0	78/Card	Pack contains 225 pcs 0 thru 5, 150 pcs 6 thru 9
034210	Black on Yellow	19.00 x 14.00	16.0	32/Card	Pack contains 100 pcs 0 thru 5, 50 pcs 6 thru 9
034310	Black on Yellow	38.00 x 22.00	26.0	10/Card	Pack contains 25 pcs 0 thru 9
034410	Black on Yellow	57.00 x 22.00	50.0	10/Card	Pack contains 25 pcs 0 thru 9





## B-946 vinyl: ideal for all applications, indoors or out

- Strong adhesive - even sticks to rough surfaces
- Print is resistant to abrasion
- Weatherproof and resistant to UV light
- Suitable for use in temperatures between -40°C and 82°C
- Waterproof, resistant to oils, alkalis, acids etc.

## IDENTICAL NUMBERS OR LETTERS ON ONE CARD

- Ordering: By part number with suffix for desired letters (A–Z), numbers (0–9), hyphens (DSH) or arrows (ARO)
- Packaging: 25 cards per pack
- Material: Vinyl (B-946)



Order Ref.	Colour	Height x Width (mm)	Character Height (mm)	Quantity
1520-	Black on Yellow	19.00 x 14.00	15.0	32/Card
9712-	Black on White	19.00 x 14.00	16.0	32/Card
1530-	Black on Yellow	38.00 x 22.00	25.0	10/Card
9713-	Black on White	38.00 x 22.00	25.0	10/Card
1534-	Black on Yellow	57.00 x 22.00	50.0	10/Card
9714-	Black on White	57.00 x 46.00	49.0	5/Card
1550-	Black on Yellow	89.00 x 38.00	75.0	6/Card
1560-	Black on Yellow	127.00 x 44.00	98.0	5/Card
1570-	Black on Yellow	228.00 x 127.00	152.0	1/Card

**i** Series 1560, 1570, 9712, 9713 and 9714: no arrows are available.

## NUMBERS OR LETTERS IN COMBINATION PACKS

- Ordering: By part number and type
- Packaging: 25 card per pack: (except 097598: 26 cards per pack)
- Material: Vinyl (B-946)



Order Ref.	Colour	Height x Width (mm)	Character Height (mm)	Quantity	Number of Markers per Number/Letter
<b>Letters A-Z</b>					
097600	Black on Yellow	19.00 x 14.00	15.0	32/Card	Pack contains 50 pcs A thru F, 25 pcs G thru Z
097602	Black on Yellow	38.00 x 22.00	25.0	10/Card	Pack contains 17 pcs A thru C & E, 9 pcs D & F thru J, 8 pcs K thru Z
097604	Black on Yellow	57.00 x 22.00	50.0	10/Card	Pack contains 16 pcs A,B,C & E, 8 pcs D & F thru Z
097606	Black on Yellow	89.00 x 38.00	75.0	6/Card	Pack contains 10 pcs A,B, C & E, 5 pcs D & F thru Z
097128	Black on Yellow	127.00 x 44.00	98.0	5/Card	Pack contains 6 pcs A & E, 5 pcs B thru D & F thru Y, 3 pcs Z
097712	Black on White	57.00 x 46.00	49.0	5/Card	Pack contains 6 pcs A & E, 5 pcs B,C,D & F thru Y, 3 pcs Z
097598	Black on Yellow	228.00 x 127.00	152.0	1/Card	Packs contains 1 pc A thru Z
<b>Numbers 0-9</b>					
097601	Black on Yellow	19.00 x 14.00	15.0	32/Card	Pack contains 150 pcs 1 & 2, 75 pcs 0 & 3 thru 5, 50 pcs 6 thru 9
806201	Black on White	19.00 x 14.00	15.0	32/Card	Pack contains 150 pcs 1 & 2, 75 pcs 0 & 3 thru 5, 50 pcs 6 thru 9
097603	Black on Yellow	38.00 x 22.00	25.0	10/Card	Pack contains 25 pcs 0 thru 9
097605	Black on Yellow	57.00 x 22.00	50.0	10/Card	Pack contains 25 pcs 0 thru 9
806202	Black on White	38.00 x 22.00	25.0	10/Card	Pack contains 25 pcs 0 thru 9
097607	Black on Yellow	89.00 x 38.00	75.0	6/Card	Pack contains 25 pcs 0 & 1, 15 pcs 2 thru 5, 10 pcs 6 thru 9
097129	Black on Yellow	127.00 x 44.00	98.0	5/Card	Pack contains 15 pcs 1 thru 5, 10 pcs 6 thru 9 & 0
097711	Black on White	57.00 x 46.00	49.0	5/Card	Pack contains 15 pcs 1 thru 5, 10 pcs 6 thru 9 & 0
097599	Black on Yellow	228.00 x 127.00	152.0	1/Card	Pack contains 3 pcs 1 thru 5, 2 pcs 6 thru 9 & 0





## NUMBERS & LETTERS DIN A4 SIZE FOR A PERMANENT OR TEMPORARY IDENTIFICATION

THESE NUMBERS AND LETTERS ARE A UNIQUE TOOL TO IDENTIFY RACKS AND GANGWAYS IN YOUR WAREHOUSE. DIFFERENT COLOURS ENABLE YOU TO IDENTIFY IN A VERY SPECIFIC WAY: E.G. EACH RANGE OF PRODUCTS HAS A SPECIFIC COLOUR, OR EACH FLOOR OR RACK HAS A SPECIFIC COLOUR, ETC.

Ordering: By part number with suffix for desired letters (A–Z), numbers (0–9), hyphens (DASH), dots (DOT) or arrows (ARROW)

Packaging: 1/ Pack

Available in the following materials:

- Rigid polypropylene (B-7527) – use in combination with Bradyfoam™ mounting tape
- Self-adhesive overlaminated polyester (B-7541) – quick and easy to apply
- Magnetic material (B-859) – ideal for temporary identification

Order Ref.	Colour	Height x Width (mm)	Quantity
<b>Rigid Polypropylene - B-7527</b>			
NL7527A4WH-*	Black on White	297.00 x 210.00	1/Pack
NL7527A4YL-*	Black on Yellow	297.00 x 210.00	1/Pack
NL7527A4BK-*	White on Black	297.00 x 210.00	1/Pack
NL7527A4BL-*	White on Blue	297.00 x 210.00	1/Pack
NL7527A4GR-*	White on Green	297.00 x 210.00	1/Pack
NL7527A4RD-*	White on Red	297.00 x 210.00	1/Pack
<b>Laminated Polyester - B-7541</b>			
NL7541A4WH-*	Black on White	297.00 x 210.00	1/Pack
NL7541A4YL-*	Black on Yellow	297.00 x 210.00	1/Pack
NL7541A4BK-*	White on Black	297.00 x 210.00	1/Pack
NL7541A4BL-*	White on Blue	297.00 x 210.00	1/Pack
NL7541A4GR-*	White on Green	297.00 x 210.00	1/Pack
NL7541A4RD-*	White on Red	297.00 x 210.00	1/Pack
<b>Magnetic Plastic - B-859</b>			
NL859A4WH-*	Black on White	297.00 x 210.00	1/Pack
NL859A4YL-*	Black on Yellow	297.00 x 210.00	1/Pack
NL859A4BK-*	White on Black	297.00 x 210.00	1/Pack
NL859A4BL-*	White on Blue	297.00 x 210.00	1/Pack
NL859A4GR-*	White on Green	297.00 x 210.00	1/Pack
NL859A4RD-*	White on Red	297.00 x 210.00	1/Pack



## NUMBERED PANELS

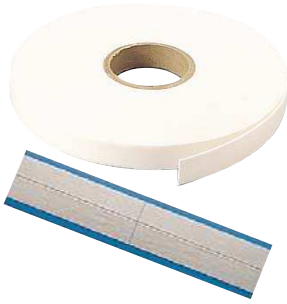
APPLY THEM ON SHELVES, BINS, LOADING DOCKS, ETC.

These panels are available in different rigid or magnetic materials. The information printed on them, is specified by you! Make your choice as shown below and send the information you want on the panels to your Brady Specialist.

**i** The PVC panels can be attached using foamtape, screws, chains, etc.

## HOW TO ORDER?

1. Select material:
  - PVC (1.5 mm)
  - PVC (3 mm)
  - Magnetic Foil (0.6 mm)
2. Determine size
3. Determine layout and character height
4. Determine number and character range you want on the panels
5. Determine quantity of each panel type



## BRADYFOAM™ MOUNTING TAPE

- White polypropylene tape, is coated on both sides with high-tack, high-shear synthetic rubber adhesive for indoor and outdoor use
- Minimum application temperature: 10°C

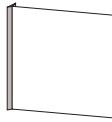
Order Ref.	Width (mm)	Height	Length (m)	Colour	Packaging
097200	19.00	114.00	-	White	4/Card
078273	19.00	19.00	33.00	White	1/Roll
019811	25.00	25.00	33.00	White	1/Roll



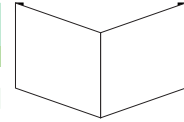
## MAKE YOUR OWN PROJECTING OR CORRIDOR WAREHOUSE SIGNS.

BY USING BLANK SIGNS TOGETHER WITH ONE OF OUR STANDARD NUMBERS & LETTERS YOU CAN ADD IMPROVED VISIBILITY TO THE WAREHOUSE SIGN OF YOUR CHOICE.

Order Ref.	Height x Width (mm)
<b>Blank Corridor Signs</b>	
287134	148.00 x 148.00
287126	148.00 x 297.00
287119	200.00 x 200.00
223990	203.00 x 403.00
287128	250.00 x 250.00
287133	300.00 x 151.00
225184	300.00 x 213.00
222582	318.00 x 318.00
223991	403.00 x 203.00
222584	603.00 x 203.00



Order Ref.	Height x Width (mm)
<b>Blank Projecting Signs</b>	
253544	151.00 x 151.00
222586	151.00 x 300.00
253545	203.00 x 203.00
223992	203.00 x 403.00
253546	250.00 x 250.00
222587	300.00 x 151.00
225185	300.00 x 213.00
222583	315.00 x 315.00
223993	403.00 x 203.00
222585	600.00 x 200.00



## EASY NUMBER

THE EASY AND FAST WAY TO LABEL EVERYTHING BY USING JUST ONE HANDY TOOL!

Order Ref.	Height	Colour	Quantity	Packaging
588040	15.00	Yellow on Black	32	800
588042	30.00	Yellow on Black	10	250

**i** Don't forget to order a pen!

Order Ref.	Description	Colour	Quantity
055500	Pen - Ultra Fine (solvent based)	Black	1
055508	Pen - Fine (solvent based)	Black	1
335091	Pen - Fine	Black	1
335092	Pen - Ultra Fine	Black	1



## PAPER LABELS ON A ROLL

- Available in RED, YELLOW, GREEN and BLUE.
- Comes in 2 sizes.
- Packaging: 1 roll of 500 labels.
- More colours and sizes available on request.

Order Ref.	Colour	Order Ref.	Colour
<b>Diameter 38.00</b>			
030661	Blue	030665	Blue
030663	Green	030667	Green
030662	Red	030666	Red
030664	Yellow	030668	Yellow

## MAGNETIC NUMBERS & LETTERS

MAGNETIC DIE-CUT NUMBERS AND LETTERS ARE DESIGNED FOR EASY APPLICATION TO METAL WAREHOUSE RACKS.

They are extremely user friendly, can be applied to any metal cabinet or surface and can be reused many times. For added convenience, the die-cut labels peel back easily from their sheet.

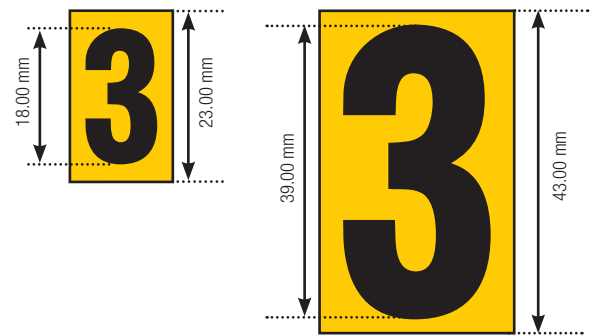
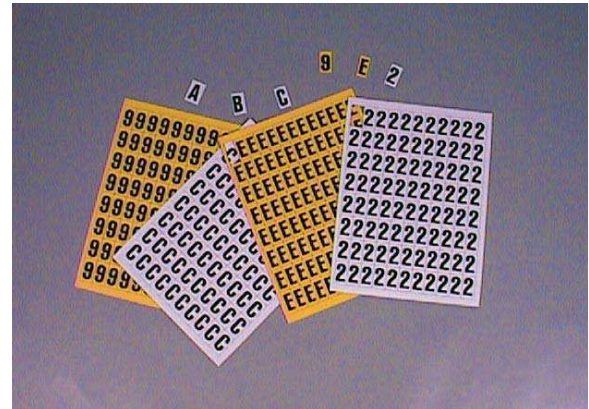
- Thickness: 1.00 mm
- Colours: white or yellow background with black print
- Packaging: 1 set



## MAGNETIC NUMBERS ON A SHEET

Order Ref.	Colour	Character Height (mm)	Height (mm)
224063	Black on Yellow	18.00	23.00
224064	Black on Yellow	39.00	43.00
224065	Black on White	18.00	23.00
224066	Black on White	39.00	43.00

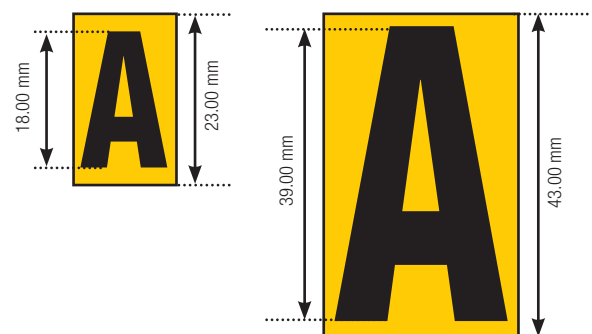
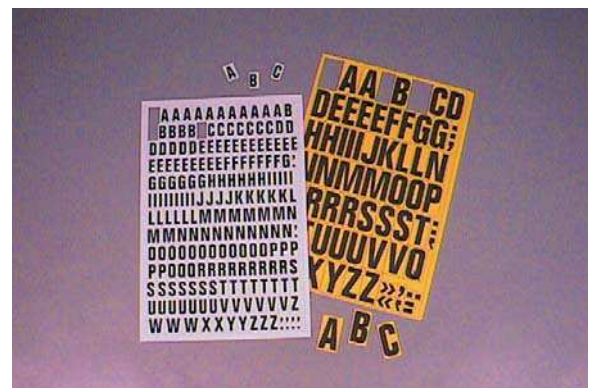
Number of characters per set													
Height: 18/23 mm					Height: 39/43 mm								
1	31 pcs	6	17 pcs	%	2 pcs	1	9 pcs	6	5 pcs	%	1 pc	-	4 pcs
2	17 pcs	7	17 pcs	0	39 pcs	2	5 pcs	7	5 pcs	0	10 pcs	+	2 pcs
3	17 pcs	8	17 pcs	▶	8 pcs	3	5 pcs	8	5 pcs	▶	2 pcs		
4	17 pcs	9	9 pcs	■	8 pcs	4	5 pcs	9	5 pcs	■	4 pcs		
5	17 pcs	0	39 pcs	◦	2 pcs	5	5 pcs	0	10 pcs	◦	3 pcs		

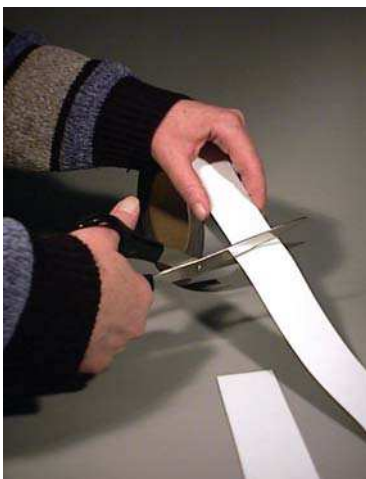


## MAGNETIC LETTERS ON A SHEET

Order Ref.	Colour	Character Height (mm)	Height (mm)
224067	Black on Yellow	18.00	23.00
224068	Black on Yellow	39.00	43.00
224069	Black on White	18.00	23.00
224070	Black on White	39.00	43.00

Number of characters per set													
Height: 18/23 mm						Height: 39/43 mm							
A	12 pcs	K	5 pcs	U	7 pcs	A	3 pcs	K	1 pcs	U	3 pcs	◀	2 pcs
B	6 pcs	L	7 pcs	V	6 pcs	B	2 pcs	L	2 pcs	V	2 pcs		
C	8 pcs	M	8 pcs	W	3 pcs	C	2 pcs	M	2 pcs	W	1 pc		
D	7 pcs	N	11 pcs	X	2 pcs	D	2 pcs	N	3 pcs	X	1 pc		
E	21 pcs	O	12 pcs	Y	2 pcs	E	4 pcs	O	2 pcs	Y	1 pc		
F	7 pcs	P	5 pcs	Z	4 pcs	F	2 pcs	P	2 pcs	Z	2 pcs		
G	7 pcs	Q	3 pcs	▶	6 pcs	G	2 pcs	Q	1 pc	▶	6 pcs		
H	6 pcs	R	9 pcs	■	6 pcs	H	2 pcs	R	3 pcs	▶	2 pcs		
I	14 pcs	S	8 pcs			I	3 pcs	S	3 pcs	◀	2 pcs		
J	4 pcs	T	8 pcs			J	1 pcs	T	3 pcs	=	1 pc		





## BLANK MAGNETIC STRIPS

THESE STRIPS COME IN YELLOW OR WHITE AND MAKE IT EASY TO IDENTIFY METAL RACKS, CABINETS AND PRODUCTS IN NO TIME AT ALL.

The magnetic material can be applied to any metallic surface and just as easily be removed and placed on another rack, cabinet, etc.

Yellow and white are the standard colours but other colours can be supplied upon request (black, green, blue, red, orange, brown, beige, grey and pink).

- Available sizes: 25.00 mm, 50.00 mm and 80.00 mm
- Thickness: 0.80 mm
- Packaging: 1 roll (10 m)

Order Ref.	Width (mm)	Length (m)	Colour	Description
225171	25.00	10.00 m	Yellow	Blank Magnetic Strips
225172	25.00	10.00 m	White	Blank Magnetic Strips
225173	50.00	10.00 m	Yellow	Blank Magnetic Strips
225174	50.00	10.00 m	White	Blank Magnetic Strips
225175	80.00	10.00 m	Yellow	Blank Magnetic Strips
225176	80.00	10.00 m	White	Blank Magnetic Strips



## MAGNETIC STRIPS: WRITE-ON / WIPE-OFF

MARK AND IDENTIFY RACKING AND SHELVING QUICKLY AND EASILY WITH THIS FLEXIBLE MAGNETIC STRIPS.

Enable easy updates and relocation of the marker as and when required, whilst keeping the face of the racks clean in appearance. Use the wipe-off pen for writing on these strips.

- Standard colours: yellow and white
- Thickness: 0.6 mm
- Packaging: 1 sheet (A4) or 1 roll (10 m)

Order Ref.	Width (mm)	Length (m)	Colour	Description
<b>1 roll</b>				
225178	25.00	10.00 m	Yellow	Magnetic strips write-on/wipe-off on roll
225179	25.00	10.00 m	White	Magnetic strips write-on/wipe-off on roll
225180	50.00	10.00 m	Yellow	Magnetic strips write-on/wipe-off on roll
225181	50.00	10.00 m	White	Magnetic strips write-on/wipe-off on roll
<b>1 sheet</b>				
225182	210.00	-	White	Magnetic write-on/wipe-off A4 sheet
225183	210.00	-	Yellow	Magnetic write-on/wipe-off A4 sheet

**i** Order these wipe-off pens to use on any of our write-on magnetic labels

Order Ref.	Description	Colour
225177	Wipe-off marker	Black



## BLANK WRITE-ON MAGNETIC LABELS

IDEAL FOR THE IDENTIFICATION OF WAREHOUSES WITH A CONSTANTLY CHANGING LAYOUT.

This type of labels offer complete flexibility. They can be applied and removed from metal surfaces as many times as necessary. When the locations change, these labels can move along with the products!

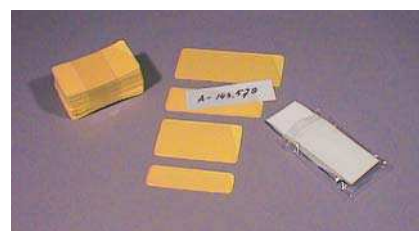
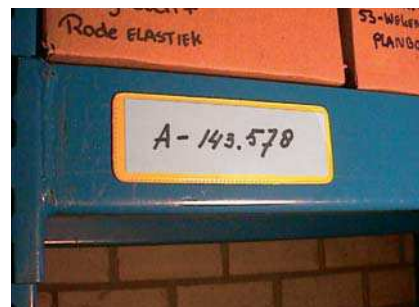
- Available in white (other colours available upon request)
- Available in different sizes (see table below – other sizes available upon request)
- Can be identified by writing on it or applying a self-adhesive label onto the magnetic material
- Packaging: 25 labels per pack

Order Ref.	Height x Width (mm)
234962	26.00 x 45.00
234963	26.00 x 77.00
234965	26.00 x 108.00
234966	26.00 x 159.00
234967	26.00 x 216.00
234968	38.50 x 45.00
234969	38.50 x 77.00
234970	38.50 x 108.00
234971	38.50 x 159.00
234972	38.50 x 216.00
234973	51.00 x 108.00
234974	51.00 x 159.00
234975	51.00 x 312.00
234978	77.00 x 108.00
234979	77.00 x 159.00
234980	77.00 x 312.00

## SMALL POUCHES WITH MAGNETIC STRIPS

- Ideal for marking stock on metal racks in warehouses
- Magnetic strip on back of pouch for easy application
- Very suitable for goods that have no permanent bin location
- Packaging: 20

Order Ref.	Height x Width (mm)	Colour
<b>Small Pouches with Magnetic Strips</b>		
224050	30.00 x 100.00	Yellow
224052	58.00 x 100.00	Yellow
224051	40.00 x 120.00	Yellow
224053	58.00 x 137.00	Yellow
<b>Cardboard Inserts</b>		
224056	48.00 x 88.00	White
224054	23.00 x 90.00	White
224055	33.00 x 110.00	White
224057	50.00 x 128.00	White



## LARGE POUCHES WITH MAGNETIC STRIPS

IDEAL FOR ATTACHING FORMS (TRANSPORT, STOCK, ETC.) TO METAL RACKS, CABINETS AND OTHER METAL SURFACES.

- Material: vinyl
- Packaging: 10 pouches (empty)

Order Ref.	Height x Width (mm)	Colour
224060	110.00 x 220.00	Blue
224059	157.00 x 220.00	Blue
224058	305.00 x 225.00	Blue

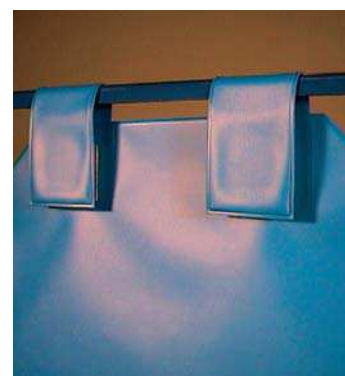


## POUCHES WITH MAGNETIC LOOPS

THESE POUCHES HAVE TWO MAGNETICALLY CLOSING LOOPS AT THE TOP, MAKING THEM IDEAL TO ATTACH TO TROLLEYS AND PIPES.

- Packaging: 10 pouches (empty)

Order Ref.	Height x Width (mm)	Colour
224062	155.00 x 220.00	Blue
224061	295.00 x 230.00	Blue



## STANDARD VINYL DATE LABELS

INSPECTION DATE LABELS CAN BE USED WHEREVER A FREQUENT AND REGULAR INSPECTION OF MACHINERY AND EQUIPMENT IS REQUIRED.

One example is the indication of the inspection date of the fire extinguishers. Simply mark the label with a hole punch (see next page) and apply wherever you need it!

Diameter (mm)	Labels per card
15.00	24
25.00	10
35.00	5

- Material: Vinyl Cloth (B-500)
- Packaging: 25 cards / pack
- Other sizes, colours and materials are available on request



Order Ref.	Legend	Colour	Diameter (mm)
806207	13	13	15.00
806212	13	13	25.00
806217	13	13	35.00
806208	14	14	15.00
806213	14	14	25.00
806218	14	14	35.00
806209	15	15	15.00
806214	15	15	25.00
806219	15	15	35.00
806295	16	16	15.00
806296	16	16	25.00
806297	16	16	35.00
813089	17	17	15.00
813120	17	17	25.00
813090	17	17	35.00
813091	18	18	15.00
813092	18	18	25.00
813093	18	18	35.00
833955	19	19	15.00
833956	19	19	25.00
833957	19	19	35.00
833958	20	20	15.00
833959	20	20	25.00
833960	20	20	35.00
833961	21	21	15.00
833962	21	21	25.00
833963	21	21	35.00
833964	22	22	15.00
833965	22	22	25.00
833966	22	22	35.00
833967	23	23	15.00
833968	23	23	25.00
833969	23	23	35.00
833970	24	24	15.00
833971	24	24	25.00
833972	24	24	35.00
833973	25	25	15.00
833974	25	25	25.00
833975	25	25	35.00
833976	26	26	15.00
833977	26	26	25.00
833978	26	26	35.00
833979	27	27	15.00
833980	27	27	25.00
833981	27	27	35.00
833982	28	28	15.00
833983	28	28	25.00
833984	28	28	35.00
833985	29	29	15.00
833986	29	29	25.00
833987	29	29	35.00
833988	30	30	15.00
833989	30	30	25.00
833990	30	30	35.00

Order Ref.	Legend	Colour	Diameter (mm)
806278	2013	2013	15.00
806283	2013	2013	25.00
806288	2013	2013	35.00
806279	2014	2014	15.00
806284	2014	2014	25.00
806289	2014	2014	35.00
806280	2015	2015	15.00
806285	2015	2015	25.00
806290	2015	2015	35.00
806298	2016	2016	15.00
806299	2016	2016	25.00
806300	2016	2016	35.00
813094	2017	2017	15.00
813095	2017	2017	25.00
813096	2017	2017	35.00
813097	2018	2018	15.00
813098	2018	2018	25.00
813099	2018	2018	35.00
834091	2019	2019	15.00
834092	2019	2019	25.00
834093	2019	2019	35.00
834094	2020	2020	15.00
834095	2020	2020	25.00
834096	2020	2020	35.00
834097	2021	2021	15.00
834098	2021	2021	25.00
834099	2021	2021	35.00
834100	2022	2022	15.00
834101	2022	2022	25.00
834102	2022	2022	35.00
834103	2023	2023	15.00
834104	2023	2023	25.00
834105	2023	2023	35.00
834106	2024	2024	15.00
834107	2024	2024	25.00
834108	2024	2024	35.00
834109	2025	2025	15.00
834110	2025	2025	25.00
834111	2025	2025	35.00
834112	2026	2026	15.00
834113	2026	2026	25.00
834114	2026	2026	35.00
834115	2027	2027	15.00
834116	2027	2027	25.00
834117	2027	2027	35.00
834118	2028	2028	15.00
834119	2028	2028	25.00
834120	2028	2028	35.00
834121	2029	2029	15.00
834122	2029	2029	25.00
834123	2029	2029	35.00
834124	2030	2030	15.00
834125	2030	2030	25.00
834126	2030	2030	35.00

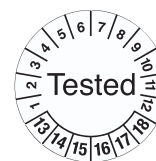
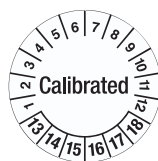
Order Ref.	Legend	Colour	Diameter (mm)
806222	13/14	13 14	25.00
806226	13/14	13 14	35.00
806223	14/15	14 15	25.00
806227	14/15	14 15	35.00
806307	15/16	15 16	25.00
806308	15/16	15 16	35.00
813100	16/17	16 17	25.00
813101	16/17	16 17	35.00
833991	17/18	17 18	25.00
833992	17/18	17 18	35.00
833993	18/19	18 19	25.00
833994	18/19	18 19	35.00
833995	19/20	19 20	25.00
833996	19/20	19 20	35.00
833997	20/21	20 21	25.00
833998	20/21	20 21	35.00
833999	21/22	21 22	25.00
834000	21/22	21 22	35.00
834001	22/23	22 23	25.00
834002	22/23	22 23	35.00
834003	23/24	23 24	25.00
834004	23/24	23 24	35.00
834005	24/25	24 25	25.00
834006	24/25	24 25	35.00
834007	25/26	25 26	25.00
834008	25/26	25 26	35.00
834009	26/27	26 27	25.00
834010	26/27	26 27	35.00
834011	27/28	27 28	25.00
834012	27/28	27 28	35.00
834013	28/29	28 29	25.00
834014	28/29	28 29	35.00
834015	29/30	29 30	25.00
834016	29/30	29 30	35.00

**BRADY**  
Customize-it

Other sizes, colors and materials are available on request.



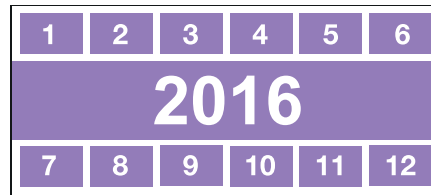
Order Ref.	Legend	Diameter (mm)
255911	Calibrated	25.00
255912	Calibrated	35.00
255917	Inspected	25.00
255918	Inspected	35.00
255913	Next Inspection	25.00
255914	Next Inspection	35.00
255915	Serviced	25.00
255916	Serviced	35.00
255919	Shelf life expires	25.00
255920	Shelf life expires	35.00
255909	Tested	25.00
255910	Tested	35.00



## RECTANGULAR VINYL DATE LABELS

- Material: Vinyl Cloth (B-500)
- Packaging: 25 labels / card - 9 cards / pack

Order Ref.	Legend	Colour	Height x Width (mm)
834269	2013	2013	25.00 x 57.00
834270	2014	2014	25.00 x 57.00
834271	2015	2015	25.00 x 57.00
834272	2016	2016	25.00 x 57.00
834273	2017	2017	25.00 x 57.00
834274	2018	2018	25.00 x 57.00
834275	2019	2019	25.00 x 57.00
834276	2020	2020	25.00 x 57.00
834277	2021	2021	25.00 x 57.00
834278	2022	2022	25.00 x 57.00
834279	2023	2023	25.00 x 57.00
834280	2024	2024	25.00 x 57.00
834281	2025	2025	25.00 x 57.00
834282	2026	2026	25.00 x 57.00
834283	2027	2027	25.00 x 57.00
834284	2028	2028	25.00 x 57.00
834285	2029	2029	25.00 x 57.00
834286	2030	2030	25.00 x 57.00

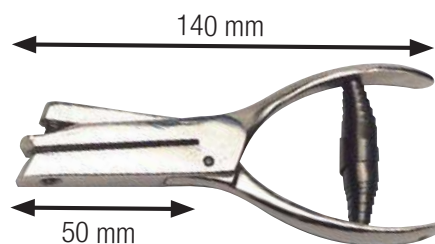


## HOLE PUNCH

IDEAL TO PUNCH EXPIRE DATE LABELS.

- Made of superior quality nickel-plated steel.
- Punches documents of up to 1.5 mm thick.
- The design of the pair of tongs (50 mm wide) enables you to punch the middle of cards of up to 100 mm wide.
- A range of over 40 shapes and characters allow easy identification of all the people performing the inspection.

Order Ref.	Description
225053	Round hole punch
225054	Square hole punch
275065	Triangular hole punch



**BRADY**  
Customize-it

Other sizes, colours and materials are available on request.



## TAMPER-EVIDENT DATE LABELS

- Material: Polyolefin (B-429) is designed to fragment upon removal, which makes it impossible to remove a date label without leaving clear proof of tampering.
- Packaging: 1 Sheet
- Other sizes are available on request

Diameter (mm)	Labels per sheet
10.00	104
15.00	40
20.00	28
30.00	15

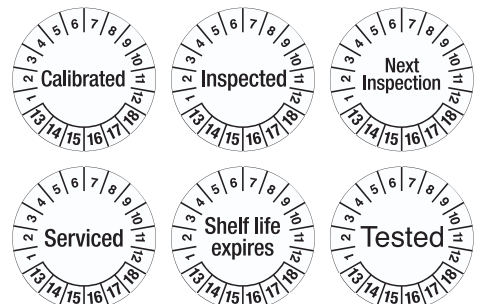


Order Ref.	Legend	Colour	Diameter (mm)
806230	13	13	10.00
806235	13	13	15.00
806240	13	13	20.00
806245	13	13	30.00
806231	14	14	10.00
806236	14	14	15.00
806241	14	14	20.00
806246	14	14	30.00
806232	15	15	10.00
806237	15	15	15.00
806242	15	15	20.00
806247	15	15	30.00
806301	16	16	10.00
806302	16	16	15.00
806303	16	16	20.00
806311	16	16	30.00
813102	17	17	10.00
813103	17	17	15.00
813104	17	17	20.00
813105	17	17	30.00
813106	18	18	10.00
813107	18	18	15.00
813108	18	18	20.00
813109	18	18	30.00
834017	19	19	10.00
834018	19	19	15.00
834019	19	19	20.00
834020	19	19	30.00
834021	20	20	10.00
834022	20	20	15.00
834023	20	20	20.00
834024	20	20	30.00
834025	21	21	10.00
834026	21	21	15.00
834027	21	21	20.00
834028	21	21	30.00
834029	22	22	10.00
834030	22	22	15.00
834031	22	22	20.00
834032	22	22	30.00
834033	23	23	10.00
834034	23	23	15.00
834035	23	23	20.00
834036	23	23	30.00
834037	24	24	10.00
834038	24	24	15.00
834039	24	24	20.00
834040	24	24	30.00
834041	25	25	10.00
834042	25	25	15.00
834043	25	25	20.00
834044	25	25	30.00
834045	26	26	10.00
834046	26	26	15.00
834047	26	26	20.00
834048	26	26	30.00
834049	27	27	10.00
834050	27	27	15.00
834051	27	27	20.00
834052	27	27	30.00
834053	28	28	10.00
834054	28	28	15.00
834055	28	28	20.00
834056	28	28	30.00
834057	29	29	10.00
834058	29	29	15.00
834059	29	29	20.00
834060	29	29	30.00
834061	30	30	10.00
834062	30	30	15.00
834063	30	30	20.00
834064	30	30	30.00

Order Ref.	Legend	Colour	Diameter (mm)
806250	2013	2013	10.00
806255	2013	2013	15.00
806260	2013	2013	20.00
806265	2013	2013	30.00
806251	2014	2014	10.00
806256	2014	2014	15.00
806261	2014	2014	20.00
806266	2014	2014	30.00
806252	2015	2015	10.00
806257	2015	2015	15.00
806262	2015	2015	20.00
806267	2015	2015	30.00
806304	2016	2016	10.00
806305	2016	2016	15.00
806306	2016	2016	20.00
806312	2016	2016	30.00
813110	2017	2017	10.00
813111	2017	2017	15.00
813112	2017	2017	20.00
813113	2017	2017	30.00
813114	2018	2018	10.00
813115	2018	2018	15.00
813116	2018	2018	20.00
813117	2018	2018	30.00
834127	2019	2019	10.00
834128	2019	2019	15.00
834129	2019	2019	20.00
834130	2019	2019	30.00
834131	2020	2020	10.00
834132	2020	2020	15.00
834133	2020	2020	20.00
834134	2020	2020	30.00
834135	2021	2021	10.00
834136	2021	2021	15.00
834137	2021	2021	20.00
834138	2021	2021	30.00
834139	2022	2022	10.00
834140	2022	2022	15.00
834141	2022	2022	20.00
834142	2022	2022	30.00
834143	2023	2023	10.00
834144	2023	2023	15.00
834145	2023	2023	20.00
834146	2023	2023	30.00
834147	2024	2024	10.00
834148	2024	2024	15.00
834149	2024	2024	20.00
834150	2024	2024	30.00
834151	2025	2025	10.00
834152	2025	2025	15.00
834153	2025	2025	20.00
834154	2025	2025	30.00
834155	2026	2026	10.00
834156	2026	2026	15.00
834157	2026	2026	20.00
834158	2026	2026	30.00
834159	2027	2027	10.00
834160	2027	2027	15.00
834161	2027	2027	20.00
834162	2027	2027	30.00
834163	2028	2028	10.00
834164	2028	2028	15.00
834165	2028	2028	20.00
834166	2028	2028	30.00
834167	2029	2029	10.00
834168	2029	2029	15.00
834169	2029	2029	20.00
834170	2029	2029	30.00
834171	2030	2030	10.00
834172	2030	2030	15.00
834173	2030	2030	20.00
834174	2030	2030	30.00

Order Ref.	Legend	Colour	Diameter (mm)
806270	13/14	13 14	20.00
806274	13/14	13 14	30.00
806271	14/15	14 15	20.00
806275	14/15	14 15	30.00
806309	15/16	15 16	20.00
806310	15/16	15 16	30.00
813118	16/17	16 17	20.00
813119	16/17	16 17	30.00
834065	17/18	17 18	20.00
834066	17/18	17 18	30.00
834067	18/19	18 19	20.00
834068	18/19	18 19	30.00
834069	19/20	19 20	20.00
834070	19/20	19 20	30.00
834071	20/21	20 21	20.00
834072	20/21	20 21	30.00
834073	21/22	21 22	20.00
834074	21/22	21 22	30.00
834075	22/23	22 23	20.00
834076	22/23	22 23	30.00
834077	23/24	23 24	20.00
834078	23/24	23 24	30.00
834079	24/25	24 25	20.00
834080	24/25	24 25	30.00
834081	25/26	25 26	20.00
834082	25/26	25 26	30.00
834083	26/27	26 27	20.00
834084	26/27	26 27	30.00
834085	27/28	27 28	20.00
834086	27/28	27 28	30.00
834087	28/29	28 29	20.00
834088	28/29	28 29	30.00
834089	29/30	29 30	20.00
834090	29/30	29 30	30.00

Order Ref.	Legend	Diameter (mm)
255996	Calibrated	20.00
255997	Calibrated	30.00
255923	Inspected	20.00
255924	Inspected	30.00
255998	Next Inspection	20.00
255999	Next Inspection	30.00
255921	Serviced	20.00
255922	Serviced	30.00
255925	Shelf life expires	20.00
255926	Shelf life expires	30.00
255994	Tested	20.00
255995	Tested	30.00





## POLYESTER DATE LABELS

INSPECTION DATE LABELS CAN BE USED WHEREVER A FREQUENT AND REGULAR INSPECTION OF MACHINERY AND EQUIPMENT IS REQUIRED.

One example is the indication of the inspection date of the fire extinguishers. Simply mark the label with a hole punch (see page 15) and apply wherever you need it!

- Material: Laminated Polyester (B-7541)
- Packaging: 25 cards / pack

Diameter (mm)	Labels per card
25.00	7
35.00	5



Order Ref.	Legend	Colour	Diameter (mm)
834786	2013	2013	25.00
834804	2013	2013	35.00
834787	2014	2014	25.00
834805	2014	2014	35.00
834788	2015	2015	25.00
834806	2015	2015	35.00
834789	2016	2016	25.00
834807	2016	2016	35.00
834790	2017	2017	25.00
834808	2017	2017	35.00
834791	2018	2018	25.00
834809	2018	2018	35.00
834792	2019	2019	25.00
834810	2019	2019	35.00
834793	2020	2020	25.00
834811	2020	2020	35.00
834794	2021	2021	25.00
834812	2021	2021	35.00
834795	2022	2022	25.00
834813	2022	2022	35.00
834796	2023	2023	25.00
834814	2023	2023	35.00
834797	2024	2024	25.00
834815	2024	2024	35.00
834798	2025	2025	25.00
834816	2025	2025	35.00
834799	2026	2026	25.00
834817	2026	2026	35.00
834800	2027	2027	25.00
834818	2027	2027	35.00
834801	2028	2028	25.00
834819	2028	2028	35.00
834802	2029	2029	25.00
834820	2029	2029	35.00
834803	2030	2030	25.00
834821	2030	2030	35.00

Order Ref.	Legend	Colour	Diameter (mm)
834822	13/14	13 14	25.00
834839	13/14	13 14	35.00
834823	14/15	14 15	25.00
834840	14/15	14 15	35.00
834824	15/16	15 16	25.00
834841	15/16	15 16	35.00
834825	16/17	16 17	25.00
834842	16/17	16 17	35.00
834826	17/18	17 18	25.00
834843	17/18	17 18	35.00
834827	18/19	18 19	25.00
834844	18/19	18 19	35.00
834828	19/20	19 20	25.00
834845	19/20	19 20	35.00
834829	20/21	20 21	25.00
834846	20/21	20 21	35.00
834830	21/22	21 22	25.00
834847	21/22	21 22	35.00
834831	22/23	22 23	25.00
834848	22/23	22 23	35.00
834832	23/24	23 24	25.00
834849	23/24	23 24	35.00
834833	24/25	24 25	25.00
834850	24/25	24 25	35.00
834834	25/26	25 26	25.00
834851	25/26	25 26	35.00
834835	26/27	26 27	25.00
834852	26/27	26 27	35.00
834836	27/28	27 28	25.00
834853	27/28	27 28	35.00
834837	28/29	28 29	25.00
834854	28/29	28 29	35.00
834838	29/30	29 30	25.00
834855	29/30	29 30	35.00

**BRADY**  
Customize-it

Other sizes, colours and materials are available on request.



**ACCEPTED**

BY \_\_\_\_\_ DATE \_\_\_\_\_

**INSPECTED BY:**

DATE \_\_\_\_\_

**REJECTED** DATE \_\_\_\_\_

REASON \_\_\_\_\_

BY \_\_\_\_\_

**RE-WORK** DATE \_\_\_\_\_

BY: \_\_\_\_\_

REASON: \_\_\_\_\_

**TESTED**

DATE \_\_\_\_\_ INITIALS \_\_\_\_\_

**SCRAPPED**

DATE \_\_\_\_\_

INITIALS \_\_\_\_\_

**CERTIFICATION**

BY \_\_\_\_\_ DATE \_\_\_\_\_

DUE \_\_\_\_\_

**CHECKED**

BY \_\_\_\_\_

DATE \_\_\_\_\_

**PROPERTY TAG**

ASSET NO. \_\_\_\_\_

**STOCK NO.**

**SERIAL NO.**

## BRADY Customize-it

Other sizes, colours and materials are available on request.

**CAUTION** TEMPERATURE \_\_\_\_\_

**TOOL NO.** \_\_\_\_\_ **DEPT.** \_\_\_\_\_

## PENS

Order Ref.	Description	Colour	Quantity
055500	Pen - Ultra Fine (solvent based)	Black	1
055508	Pen - Fine (solvent based)	Black	1
335091	Pen - Fine	Black	1
335092	Pen - Ultra Fine	Black	1



Pen - Fine  
Pen - Ultra Fine



Pen - Ultra Fine (solvent based)  
Pen - Fine (solvent based)

## QUALITY CONTROL

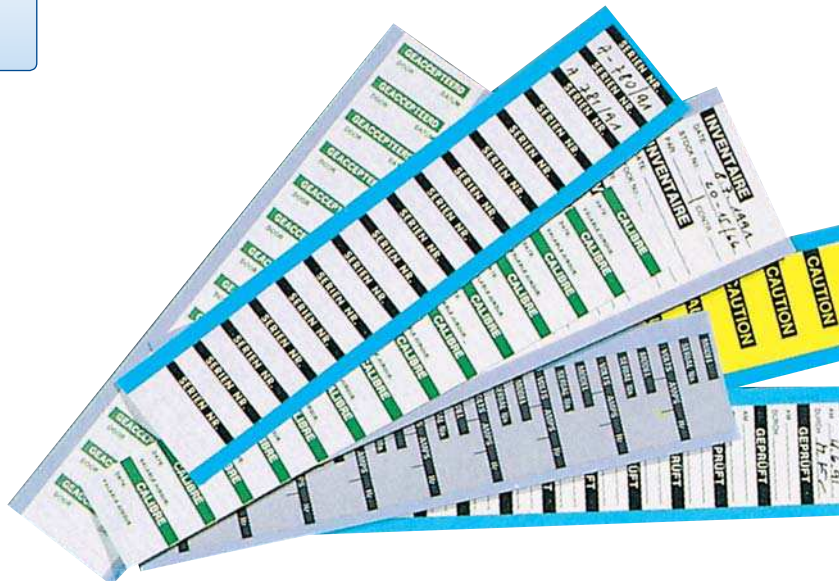
- Labels per card: 14
- Card dimensions: 50.80 x 228.60 mm
- Packaging: 25 cards
- Custom products on request

Order Ref.	Legend	Height x Width (mm)	Colour
<b>B-184: Aluminium Foil</b>			
035102	ACCEPTED	16.00 x 38.00	Green on Silver
<b>B-500: Vinyl Cloth</b>			
035002	ACCEPTED	16.00 x 38.00	Green on White
035042	CERTIFICATION	16.00 x 38.00	Black on White
256028	CHECKED	16.00 x 38.00	Green on White
035052	INSPECTED BY	16.00 x 38.00	Black on White
035001	REJECTED	16.00 x 38.00	Red on White
256012	RE-WORK	16.00 x 38.00	Black on White
256013	SCRAPPED	16.00 x 38.00	Red on White
035038	TESTED	16.00 x 38.00	Green on White

## INVENTORY

- Labels per card: 18
- Card dimensions: 50.80 x 228.60 mm
- Packaging: 25 cards
- Custom products on request

Order Ref.	Legend	Height x Width (mm)	Colour
<b>B-184: Aluminium Foil</b>			
035129	PROPERTY TAG	13.00 x 38.00	Black on Silver
035134	SERIAL NO.	13.00 x 38.00	Black on Silver
<b>B-500: Vinyl Cloth</b>			
035034	SERIAL NO.	13.00 x 38.00	Black on White
035037	STOCK NO.	13.00 x 38.00	Green on White



## MAINTENANCE

- Card dimensions:  
50.50 x 228.60 mm for labels of 38.00 x 16.00 mm  
70.00 x 229.00 mm for labels of 57.00 x 25.00 mm
- Packaging: 25 cards
- Custom products on request

<b>SERIAL NO.</b>			
<b>MODEL NO.</b>			
<b>VOLTS</b>	<b>AC-DC</b>	<b>AMPS</b>	<b>HERTZ</b>

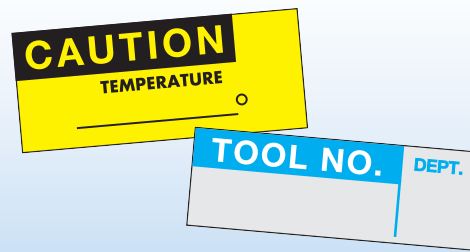
<b>DO NOT USE</b>
<b>AFTER</b> _____

<b>DATE INSTALLED</b>
BY _____

Order Ref.	Legend	Height x Width (mm)	Colour	Quantity
<b>B-184: Aluminium Foil</b>				
035118	Do not use after	16.00 x 38.00	Red on Silver	14
235075	Serial No. / Model No.	25.00 x 57.00	Black on White	9
<b>B-500: Vinyl Cloth</b>				
035017	Date installed	16.00 x 38.00	Black on White	14
035018	Do not use after	16.00 x 38.00	Red on White	14

**BRADY**  
Customize-it

Other sizes, colours and materials are available on request.



## CALIBRATION

- Card dimensions:  
50.80 x 228.60 mm for labels of 38.00 x 13.00 mm  
50.50 x 228.60 mm for labels of 38.00 x 16.00 mm and 38.00 x 38.10 mm
- Packaging: 25 cards
- Custom products on request

<b>CALIBRATED</b>
<b>EXPIRES</b> _____
<b>IDENT. NO.</b> _____
<b>ACCURACY</b> _____
<b>DATE CAL.</b> _____
<b>BY</b> _____
<b>DEPT. NO.</b> _____

<b>CALIBRATED</b>
<b>BY</b> _____ <b>DATE</b> _____
<b>DUE</b> _____

<b>DO NOT USE</b>
<b>Until Tested &amp; Calibrated</b>

<b>CALIBRATION</b>
<b>BY</b> _____ <b>DATE</b> _____
<b>DUE</b> _____

<b>CALIBRATION NOT REQUIRED</b>
---------------------------------

Order Ref.	Legend	Height x Width (mm)	Colour	Quantity
<b>B-184: Aluminium Foil</b>				
035153	Calibration not required	13.00 x 38.00	Red on Silver	18
035110	Calibration	16.00 x 38.00	Green on Silver	14
<b>B-500: Vinyl Cloth</b>				
035053	Calibration not required	13.00 x 38.00	Red on White	18
035010	Calibration	16.00 x 38.00	Green on White	14
035041	CALIBRATED	16.00 x 38.00	Black on White	14
035051	Do not use until tested & calibrated	16.00 x 38.00	Black on Yellow	14
035063	CALIBRATED	38.10 x 38.00	Black on White	6

## PENS

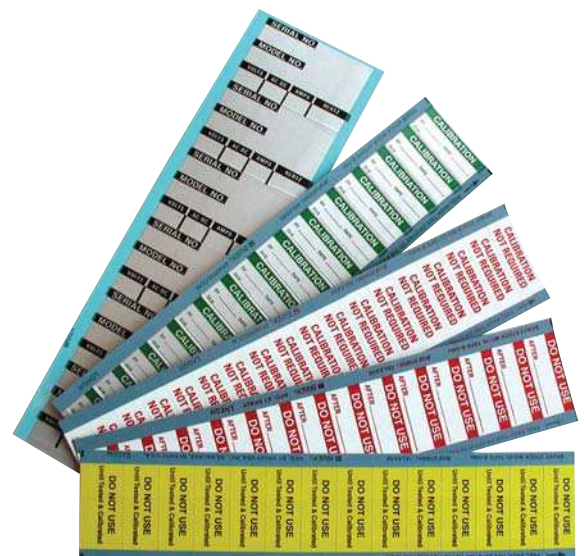
Order Ref.	Description	Colour	Quantity
055500	Pen - Ultra Fine (solvent based)	Black	1
055508	Pen - Fine (solvent based)	Black	1
335091	Pen - Fine	Black	1
335092	Pen - Ultra Fine	Black	1



Pen - Fine  
Pen - Ultra Fine



Pen - Ultra Fine (solvent based)  
Pen - Fine (solvent based)



## BLANK WRITE-ON LABELS

- Packaging: per pack of 25 cards

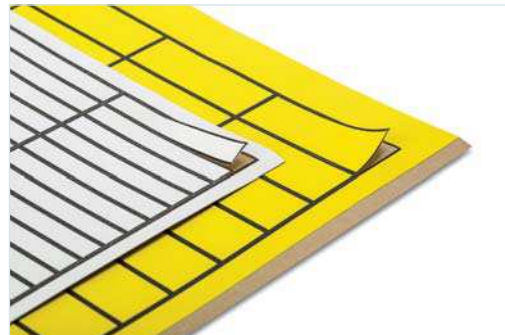
Order Ref.	Height x Width (mm)	Colour	Quantity
<b>B-184: Aluminium Foil</b>			
035146	6.00 x 38.00	Silver	36
035130	11.00 x 38.00	Silver	20
035124	16.00 x 38.00	Silver	14
035119	25.00 x 38.00	Silver	9
<b>B-500: Vinyl Cloth</b>			
035048	13.00 x 13.00	White	54
035050	19.00 x 13.00	White	36
035047	6.00 x 19.00	White	72
035046	6.00 x 38.00	White	36
035035	9.00 x 38.00	White	25
035030	11.00 x 38.00	White	20
035049	13.00 x 38.00	White	18
035024	16.00 x 38.00	Yellow	14
035019	25.00 x 38.00	White	9
035016	38.00 x 38.00	White	6
035068	13.00 x 57.00	White	18
035062	19.00 x 57.00	Yellow	12
035059	25.00 x 57.00	White	9
035056	38.00 x 57.00	White	6
035054	57.00 x 57.00	White	4



## BLANK WRITE-ON LABELS ON SHEETS

- Material: B-500 Vinyl Cloth
- Packaging: 25 sheets

Order Ref.	Height x Width (mm)	Colour	Quantity
<b>White with border</b>			
101811	11.00 x 19.00	Black on White	189/Sheet
101812	11.00 x 38.00	Black on White	80/Sheet
101813	14.00 x 42.00	Black on White	68/Sheet
101814	22.00 x 56.00	Black on White	30/Sheet
101815	10.00 x 65.00	Black on White	69/Sheet
<b>Yellow with border</b>			
101817	9.00 x 15.00	Black on Yellow	324/Sheet
101807	11.00 x 19.00	Black on Yellow	189/Sheet
101816	8.00 x 20.00	Black on Yellow	270/Sheet
101890	11.00 x 28.00	Black on Yellow	126/Sheet
101808	11.00 x 38.00	Black on Yellow	80/Sheet
101809	22.00 x 56.00	Black on Yellow	30/Sheet
101810	35.00 x 60.00	Black on Yellow	21/Sheet
<b>Yellow without border</b>			
101804	9.00 x 15.00	Yellow	324/Sheet
101805	11.00 x 19.00	Yellow	189/Sheet
101803	8.00 x 20.00	Yellow	270/Sheet
101806	11.00 x 38.00	Yellow	80/Sheet
235083	22.00 x 56.00	Yellow	30/Sheet



## MAINTENANCE & SERVICE LABELS

- Material: B-930 Vinyl
- Packaging: 4 labels / card - 10 cards / pack

Order Ref.	Legend	Height x Width (mm)	Colour
<b>B-930: Vinyl</b>			
256900	INSPECTED	95.00 x 40.00	Black on White
256901	SERVICED	95.00 x 40.00	Black on White
256902	GOODS RECEIVED	95.00 x 40.00	Black on White

INSPECTED

Date.....  
Comments.....  
Signed.....

NEXT INSPECTION

Place your date label here

SERVICED

Date.....  
Comments.....  
Signed.....

NEXT SERVICE

Place your date label here

GOODS RECEIVED

Date.....  
Comments.....  
Signed.....

SHELF LIFE EXPIRES

Place your date label here

## INSPECTION PLACARDS

- Material: B-930 Vinyl
- Packaging: 10 labels per pack

Order Ref.	Legend	Height x Width (mm)	Colour
<b>B-930: Vinyl</b>			
256906	CALIBRATION RECORD	150.00 x 100.00	Green on White
256907	INSPECTION RECORD	150.00 x 100.00	Black on White
256910	-	150.00 x 100.00	Black on White

CALIBRATION RECORD		
DATE	BY	NEXT DUE

INSPECTION RECORD		
DATE	BY	NEXT DUE

DATE		

- Material: Polyester (B-870), resists well to oil, grease, water, etc. Can be completed by using any pen.
- Packaging: pack of 10 tags + one cable tie per tag.

## EQUIPMENT INSPECTION TAGS

- Size: 100.00 mm x 175.00 mm

Order Ref.	Legend	Colour
256507	-	Black on White
256504	CALIBRATION RECORD	Black on Yellow
256509	LUBRICATION RECORD	Black on Yellow
256508	MAINTENANCE RECORD	Black on Yellow
256510	PART REPLACEMENT RECORD	Black on White
256500	REPAIR ORDER	White on Red

## QUALITY & MATERIAL CONTROL TAGS

- Size: 150.00 mm x 75.00 mm

Order Ref.	Legend	Colour
230390	-	White
230391	-	Yellow
256512	ACCEPTED	Green on White
256513	CALIBRATED	Black on White
256553	CALIBRATED	Black on White
256561	DO NOT USE	White on Red
256518	EQUIPMENT NOT TO BE USED	Red on White
256545	REPAIR	White on Orange
256517	REPAIRED BY	Orange on White
256549	RETURN TO VENDOR	White on Orange
256537	SPECIAL INSTRUCTIONS	Black on Yellow
256551	TESTED	Green on White

## PENS

Order Ref.	Description	Colour	Quantity
055500	Pen - Ultra Fine (solvent based)	Black	1
055508	Pen - Fine (solvent based)	Black	1
335091	Pen - Fine	Black	1
335092	Pen - Ultra Fine	Black	1



Pen - Fine  
Pen - Ultra Fine



Pen - Ultra Fine (solvent based)  
Pen - Fine (solvent based)

## COLOURED NYLON TIES

Order Ref.	Colour
229955	White
229956	Blue
229957	Red
229958	Orange
229959	Yellow
229960	Green
229961	Violet
229962	Black

- Size: 200 mm x 4 mm
- Material: nylon
- Packaging: 100 pieces





## BMP™21 LABEL PRINTER

Simple to operate and quick to print, the BMP21 is a labelling tool specifically designed for industrial environments. Several types of material in cartridges provides flexibility in usage wherever you need a durable label.

- 203 dpi printing resolution
- Prints on continuous tapes up to 19 mm wide

**i** For more information about kits, please contact your nearest Brady representative.

Order Ref.	Description
110889	BMP21 Label Printer
710537	BMP21 Safety Kit EU
710538	BMP21 Safety Kit UK
710662	BMP21 Label Printer Cyrillic



## BMP™51/BMP™53 LABEL MAKERS

Brady BMP51/53 Label Makers offer crisp printing, easy formatting, convenient label sizes and portability to complete a number of identification tasks. Besides stand-alone and PC connected operation, it offers wireless printing via BlueTooth® and WiFi. A free app for Smartphones with Android OS is available on the internet.

- 300 dpi printing resolution
- Prints on labels and tapes up to 38 mm wide

Order Ref.	Description
710898	BMP51 Printer with Battery Pack - AC Adaptor/Battery Charger - UK
710899	BMP53 Printer with Battery Pack - AC Adaptor/Battery Charger - UK
710894	BMP51 printer with Battery Pack and AC-adaptor/Battery Charger EU
710895	BMP53 printer with Battery Pack and AC-adaptor/Battery Charger EU



## BMP™71 LABEL PRINTER

The BMP71 is a high-end user friendly portable label printer with a large full colour LCD display, an easy-to-use menu driven user interface, and a full QWERTY keyboard layout making it quick and easy to create labels using text, symbols and coding. It can be used as a stand-alone unit, or in connection with a PC.

- 300 dpi printing resolution
- Prints on labels and tapes up to 50.8 mm wide

Order Ref.	Description
710599	BMP71 Label Printer with QWERTY Keyboard - EU Power Supply - 220V
710600	BMP71 Label Printer with QWERTY Keyboard - UK Power Supply 240V
710601	BMP71 Label Printer with AZERTY Keyboard - EU Power Supply - 220V
710603	BMP71 Label Printer with QWERTZ Keyboard - EU Power Supply - 220V
710604	BMP71 Label Printer with CYRILLIC Keyboard - EU Power Supply - 220V



## BBP™31 AND BBP™33 SIGN AND LABEL PRINTER

Designed for ease of use and versatility, this monochrome printer features an intuitive touch screen display (BBP™31), simple label design and a wide variety of materials and applications.

Coined as "2-step printing," this printer enables anyone to create labels without prior training. Simply type the desired text and hit the print button. With true "walk-up-and-print" functionality, everything that needs to be labelled in a facility actually gets labelled.

- 300 dpi printing resolution
- Prints on labels and tapes from 12.70 wide to 101 mm wide

Order Ref.	Description
710731	BBP31 Sign and Label Printer - 240 V
710737	BBP31 Sign and Label Printer - 220 V
710738	BBP31 Sign and Label Printer - 220 V
710739	BBP31 Sign and Label Printer - 220 V
710740	BBP31 Sign and Label Printer - 220 V



Order Ref.	Description
711071	BBP33 Sign and Label Printer - 220V
711075	BBP33 Sign and Label Printer - 240V



## GLOBALMARK® INDUSTRIAL LABEL MAKERS

Create your own custom signs, labels, pipe markers, tags and more on demand with the easy to use GlobalMark industrial label printer. Never before has an industrial-grade make-it-yourself printer empowered you to do so much with little more than your index finger.

Brady's advanced touchscreen technology, powered by a Microsoft Windows® CE operating system, makes producing professional labels a simple matter of...Touch, Print, Presto! Printer is available in Monocolour, Multicolour and Colour & Cut versions.

- Stand-alone unit or connected to PC using MarkWare™ Facility Identification Software
- Over 700 built-in symbols
- 300 dpi printing resolution
- Prints on labels and tapes from 12.70 wide to 101 mm wide



Order Ref.	Description
250352	GlobalMark Color & Cut English (UK) + MarkWare
250353	GlobalMark Color & Cut German + MarkWare
250354	GlobalMark Color & Cut French (AZERTY keyboard) + MarkWare
250355	GlobalMark Color & Cut Dutch (QWERTY keyboard) + MarkWare
250356	GlobalMark Color & Cut Dutch (B) (AZERTY keyboard) + MarkWare
250357	GlobalMark Color & Cut Spanish + MarkWare
250358	GlobalMark Color & Cut Italian + MarkWare
250359	GlobalMark Color & Cut Portuguese + MarkWare
250360	GlobalMark Color & Cut Swedish + MarkWare
250361	GlobalMark Color & Cut Finnish + MarkWare
250362	GlobalMark Color & Cut Norwegian + MarkWare
250363	GlobalMark Color & Cut Danish + MarkWare
250364	GlobalMark Color & Cut English - Export 110 V + MarkWare
250365	GlobalMark Color & Cut English - Export 220 V + MarkWare



## BBP™85 SIGN & LABEL PRINTER

The BBP™85 Sign and Label Printer is a thermal transfer 300 dpi benchtop printer to create bold, multi-coloured custom visuals up to 254 mm wide. It features a large touchscreen and intuitive, easy to use interface, allowing anyone to create signs quickly and easily. The printer has a broad selection of material options, including vinyl, polyester, reflective, glow-in-the-dark and pre-printed sign headers. With true "walk up and print" ease of use, instantly create high quality, multi-coloured eye-catching visuals.

- Stand-alone unit or connected to PC using MarkWare™ Facility Identification Software
- 300 dpi printing resolution
- Prints on labels and tapes from 101.60 mm wide to 254 mm wide

Order Ref.	Description
711190	BBP85 QWERTZ PRINTER + MarkWare
711191	BBP85 CYRILLIC PRINTER + MarkWare
711192	BBP85 AZERTY PRINTER + MarkWare
711193	BBP85 QWERTY EU PRINTER + MarkWare
711194	BBP85 QWERTY UK PRINTER + MarkWare



## MARKWARE™ FACILITY IDENTIFICATION SOFTWARE

Ideal tool to quickly design professional looking signs, labels and tags. The MarkWare template wizard walks you through the creation process step by step, making it easy to use without training or reading the manual. From simple labels to complex signs, MarkWare does it all - no need to learn and maintain different software programs.

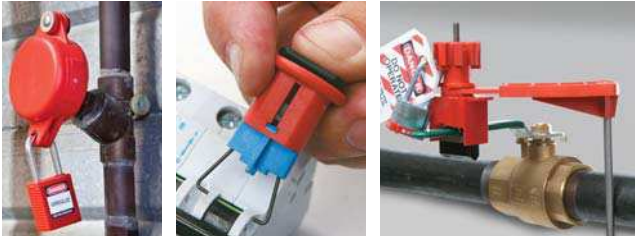
MarkWare contains a large library of safety pictograms, pipemarkers and other useful artwork to allow you to create your own safety or information signs. Together with our benchtop Signs and Label printers you have high flexibility and instant safety product sourcing at your fingertips.

Order Ref.	Description
710669	MarkWare Industrial Signmaking Software



# BRADY - YOUR COMPLETE WORK SAFETY SOLUTION PROVIDER

Find out more safety products from our extensive portfolio. Visit our websites or contact your nearest Brady representative.



## LOCKOUT/TAGOUT - SOLUTIONS FOR HAZARDOUS ENERGY CONTROL

From audit and identification of energy control points, through procedure creation and the selection of adequate products, up to employee training and safety awareness promotion – Brady offers full support and a broad range of products to create your advanced work safety environment.



## VISUAL TAGGING SOLUTIONS SAFETY. MAINTENANCE. IDENTIFICATION.

Provide essential records of the safe condition of all your site equipment and scaffolding.

- Simple to implement
- Easy for workers to understand
- Specially designed for rough environments
- Highly visible



## PIPE MARKERS - EASILY IDENTIFY PIPE CONTENT AND FLOW DIRECTION

The correct identification of pipes ensures a better insight into a building's structure. Accidents, injuries and damage can be prevented.



## SORBENTS - SMART SPILL CONTROL

Clean, fast and safe removal of oil, water and chemicals spills.

- Adsorbs 10-25 times its own weight within a few seconds
- Environmentally friendly
- Spend less time cleaning



WHEN PERFORMANCE MATTERS MOST™

### BRADY Africa

361 Olympic Duel  
Northlands Business Park  
Newmarket Road  
Randburg  
Tel: +27 11 704 3295  
Fax: +27 86 501 7775

### BRADY Benelux

Industriepark C/3  
Lindestraat 20  
9240 Zele, Belgium  
Tel. +32 (0) 52 45 78 11  
Fax +32 (0) 52 45 78 12

### Brady Central & Eastern Europe

Na Pántoch 18  
831 06 Bratislava, Slovakia  
Tel. +421 2 3300 4800  
Fax +421 2 3300 4801

### BRADY Denmark

Svendborgvej 39D  
5260 Odense S  
Tel. +45 66 14 44 00  
Fax +45 66 14 44 50

### BRADY France

Parc EURO CIT  
45, avenue de l'Europe  
59436 Roncq Cedex  
Tel. +33 (0) 3 20 01 08 70  
Fax +33 (0) 3 20 01 08 76

### BRADY Germany

Brady-SträÙe 1  
63329 Egelsbach  
Tel. +49 (0) 6103 7598 660  
Fax +49 (0) 6103 7598 670

### BRADY Hungary

Puskás Tivadar u. 4.  
2040 Budaörs  
Tel. +36 23 500 275  
Fax +36 23 500 276

### BRADY Italy

Via Degli Abeti 44  
20064 Gorgonzola (MI)  
Tel. +39 02 26 00 00 22  
Fax +39 02 25 75 351

### BRADY Middle East FZE

PO BOX 18015  
Jebel Ali, Dubai, UAE  
Tel. +971 4881 2524  
Fax +971 4881 3183

### BRADY Norway

Kjeller Vest 2  
2007 Kjeller  
Tel: +47 70 13 40 00  
Fax: +47 70 13 40 01

### BRADY Romania

World Trade Center  
Piata Montreal, nr 10  
Intrarea F, Etajul 1, Birou 1.16,  
Sector 1,  
Bucharest, 011469  
Tel: +40 21 202 3032  
Fax: +40 21 202 3100

### BRADY Russia

Avrora Business Park, Office 2305  
82/2, Sadovnicheskaya Street  
115035 Moscow  
Tel: +7 495 225 93 62

### BRADY Spain & Portugal

Diputaci3n, 260  
08007 Barcelona, Spain  
Tel. +34 900 902 993  
Fax +34 900 902 994

### BRADY Sweden

Vallgatan 5  
170 67 Solna  
Tel. +46 (0) 8 590 057 30  
Fax +46 (0) 8 590 818 68

### BRADY Turkey

Selvili Sok. No: 3/4  
4.Levent Istanbul 34330  
Tel. +90 212 264 02 20 / 264 02 21  
Fax +90 212 270 83 19

### BRADY UK & Ireland

Wildmere Industrial Estate  
Banbury, Oxon – OX16 3JU, UK  
Tel. +44 (0) 1295 228 288  
Fax +44 (0) 1295 228 100

### BRADY WORLDWIDE

Australia . . . . .	612-8717-6300
Brazil. . . . .	55-11-3686-4720
Canada . . . . .	1-800-263-6179
China (Beijing) . . . . .	86-10-6788-7799
China (Shanghai) . . . . .	86-21-6886-3666
China (Wuxi) . . . . .	86-510-528-2222
Hong Kong . . . . .	852-2359-3149
Japan . . . . .	81-45-461-3600
Korea . . . . .	82-31-451-6600
Latin America . . . . .	1-414-540-5560
Malaysia . . . . .	60-4-646-2700
Mexico . . . . .	525-399-6963
New Zealand . . . . .	61-2-8717-2200
Philippines. . . . .	63-2-658-2077
Singapore . . . . .	65-6477-7261
Taiwan . . . . .	886-3-327-7788
Thailand . . . . .	66-2-793-9200
USA . . . . .	1-800-537-8791

Your distributor