

## VERSATILE ELEGANCE



### THE PRODUCT

The MEDITEC family of cases is characterized by convincing design features.

Mitred corners emphasise the modern enclosure design and technical refinement at the same time.

A clear form language allows universal application; distinctions can easily be implemented through layout or colour design.

### YOUR ADVANTAGE

High stability due to internal reinforcing grid.

Enclosure design allows easy assembly.

Ergonomic sloped control panel with recessed area in order to protect the membrane keyboards. When using one side panel, the front cover ensures optimum closure of this gap.

Side trims are attached laterally, optionally available without / with ventilation. Individual colours available on request.

### High-quality appearance

Identical surface finishes for shells, side panels, operating fronts as well as front and rear panels form the basis for a practical, large-volume case system for high-quality functional assemblies.

### Ergonomics for table top, wall mounting and mobile use

The ergonomically inclined sloping control panel facilitates viewing of the display instruments as well as operating.

The handle bar gives desktop applications an ergonomically favourable angle. It can also be used for carrying the device, see page 70.

detailed drawings see our website  
[www.okw.com](http://www.okw.com)



E 160

E 220

D 160

D 220

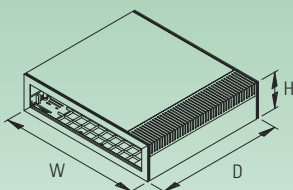


## COMPATIBLE

Protection class IP 40

Max. size of PCB (W x D in mm)

	bottom / top part
E 160	130 x 185
E 220	130 x 245
D 160	260 x 185
D 220	260 x 245



### YOUR ADVANTAGE

Designed to eurocard-sizes, double and extended.

Recessed vertical guide positions for fitting additional mounting plates behind the front panel.

Variable heights. The height can be increased by 50 mm when using the side panels (accessory). For additional heights two side panels can be assembled with one connector.

Plastic front and rear panels easy to machine.

### APPLICATIONS

Medical field and laboratory technology.

Feedback control.

Measuring and control technology.

Control peripherals, modems and interfaces. Communication and network technology.

Data collection.



detailed drawings see our website  
[www.okw.com](http://www.okw.com)



## EASY TO OPERATE



### WALL MOUNTING

A special asset is the application with ergonomically inclined sloping control panel. This allows the case to be mounted within the operator's reach. Displays and readouts are easily legible for all users involved – be it the mechanical engineer, or the operator etc.

But even without a sloping control panel, MEDITEC still looks good as a wall-mounted enclosure, e.g. for small networks.

### Rational wall mounting

Wall mounting brackets as accessory, easy to assemble.

### Convenient handle bar

Assembly can be effected from the inside as well as from the outside. The handle bar (accessory) can be removed in the 135° position.

### MOBILE

For mobile applications the MEDITEC enclosures can be fitted with a handle bar. The handle bar ensures a perfect grip as well as an ergonomical handling located above the centre of gravity of the enclosure.

If necessary, the adjustment mechanism allows the user to set a practical angle in situ, in increments of 30°.







detailed drawings see our website  
[www.okw.com](http://www.okw.com)




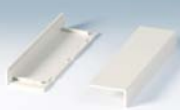




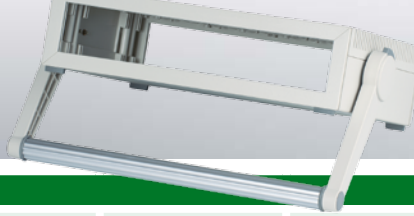
## MEDITEC

MEDITEC	Outside dim. in mm			Version / Equipment			Material	Part-No.		
	L	W	H	L-shells off-white, RAL 9002	side panels	side trims		without handle bar	with handle bar	
	E 160	160	200	74	with ventilation	off-white	–	ABS (UL 94 HB)	B 22 13 007	B 22 13 107
		160	200	74	with ventilation	lagoon	–	ABS (UL 94 HB)	B 22 13 005	B 22 13 105
		160	200	74	without ventilation	off-white	–	ABS (UL 94 HB)	B 22 13 017	B 22 13 117
		160	200	74	without ventilation	lagoon	–	ABS (UL 94 HB)	B 22 13 015	B 22 13 115
		160	200	124	with ventilation	off-white	1 pc per side	ABS (UL 94 HB)	B 22 13 207	B 22 13 307
		160	200	124	with ventilation	lagoon	1 pc per side	ABS (UL 94 HB)	B 22 13 205	B 22 13 305
		160	200	124	without ventilation	off-white	1 pc per side	ABS (UL 94 HB)	B 22 13 217	B 22 13 317
		160	200	124	without ventilation	lagoon	1 pc per side	ABS (UL 94 HB)	B 22 13 215	B 22 13 315
	E 220	160	260	74	with ventilation	off-white	–	ABS (UL 94 HB)	B 22 12 007	B 22 12 107
		160	260	74	with ventilation	lagoon	–	ABS (UL 94 HB)	B 22 12 005	B 22 12 105
		160	260	74	without ventilation	off-white	–	ABS (UL 94 HB)	B 22 12 017	B 22 12 117
		160	260	74	without ventilation	lagoon	–	ABS (UL 94 HB)	B 22 12 015	B 22 12 115
		160	260	124	with ventilation	off-white	1 pc per side	ABS (UL 94 HB)	B 22 12 207	B 22 12 307
		160	260	124	with ventilation	lagoon	1 pc per side	ABS (UL 94 HB)	B 22 12 205	B 22 12 305
		160	260	124	without ventilation	off-white	1 pc per side	ABS (UL 94 HB)	B 22 12 217	B 22 12 317
		160	260	124	without ventilation	lagoon	1 pc per side	ABS (UL 94 HB)	B 22 12 215	B 22 12 315
	D 160	290	200	74	with ventilation	off-white	–	ABS (UL 94 HB)	B 22 11 007	B 22 11 107
		290	200	74	with ventilation	lagoon	–	ABS (UL 94 HB)	B 22 11 005	B 22 11 105
		290	200	74	without ventilation	off-white	–	ABS (UL 94 HB)	B 22 11 017	B 22 11 117
		290	200	74	without ventilation	lagoon	–	ABS (UL 94 HB)	B 22 11 015	B 22 11 115
		290	200	124	with ventilation	off-white	1 pc per side	ABS (UL 94 HB)	B 22 11 207	B 22 11 307
		290	200	124	with ventilation	lagoon	1 pc per side	ABS (UL 94 HB)	B 22 11 205	B 22 11 305
		290	200	124	without ventilation	off-white	1 pc per side	ABS (UL 94 HB)	B 22 11 217	B 22 11 317
		290	200	124	without ventilation	lagoon	1 pc per side	ABS (UL 94 HB)	B 22 11 215	B 22 11 315
	D 220	290	260	74	with ventilation	off-white	–	ABS (UL 94 HB)	B 22 10 007	B 22 10 107
		290	260	74	with ventilation	lagoon	–	ABS (UL 94 HB)	B 22 10 005	B 22 10 105
		290	260	74	without ventilation	off-white	–	ABS (UL 94 HB)	B 22 10 017	B 22 10 117
		290	260	74	without ventilation	lagoon	–	ABS (UL 94 HB)	B 22 10 015	B 22 10 115
		290	260	124	with ventilation	off-white	1 pc per side	ABS (UL 94 HB)	B 22 10 207	B 22 10 307
		290	260	124	with ventilation	lagoon	1 pc per side	ABS (UL 94 HB)	B 22 10 205	B 22 10 305
		290	260	124	without ventilation	off-white	1 pc per side	ABS (UL 94 HB)	B 22 10 217	B 22 10 317
		290	260	124	without ventilation	lagoon	1 pc per side	ABS (UL 94 HB)	B 22 10 215	B 22 10 315

## SEPARATE PARTS (FOR INDIVIDUAL COMBINATIONS)

L-shells	Version / Application	without holes	with holes*1
	E 160 ABS, off-white, 160 x 200 x 74 mm, 2 pcs incl. assembly kit and feet	B 20 13 007	B 20 13 107
	E 220 ABS, off-white, 160 x 260 x 74 mm, 2 pcs incl. assembly kit and feet	B 20 12 007	B 20 12 107
	D 160 ABS, off-white, 290 x 200 x 74 mm, 2 pcs incl. assembly kit and feet	B 20 11 007	B 20 11 107
	D 220 ABS, off-white, 290 x 260 x 74 mm, 2 pcs incl. assembly kit and feet	B 20 10 007	B 20 10 107
Side panels	Version / Application	without holes	with holes*1
	160 ABS, off-white, for 50 mm additional height, 2 pcs incl. screws	B 20 31 007	B 20 31 107
	220 ABS, off-white, for 50 mm additional height, 2 pcs incl. screws	B 20 30 007	B 20 30 107
Handle bar	Version / Application		
	E Side arms, off-white, push-buttons volcano, aluminium centre section, 1 pc	B 21 16 507	
	D Side arms, off-white, push-buttons volcano, aluminium centre section, 1 pc	B 21 29 507	
Side trims	Version / Application	off-white	lagoon
	160 ABS, without ventilation, 2 pcs	B 20 22 007	B 20 22 005
	220 ABS, without ventilation, 2 pcs	B 20 20 007	B 20 20 005
	160 ABS, with ventilation, 2 pcs	B 20 23 007	B 20 23 005
	220 ABS, with ventilation, 2 pcs	B 20 21 007	B 20 21 005

\*1 for mounting handle bar (separate article)



## MEDITEC ACCESSORIES

Article	For MEDITEC	Version / Application	Part-No.
① Sloping control panel	E	ABS, off-white, RAL 9002, 2-part construction for easy access to component parts, max. dim. keypad 132.00/261.70 x 66.00 mm, 1 pc	B 21 16 007
	D		B 21 29 007
② Front / rear panel* <sup>2</sup>	E (74 mm high)	flat, ABS, off-white, RAL 9002, 141.6 x 55.6 x 3 mm, 1 pc	B 21 16 307
	E (124 mm high)	Z1, ABS, off-white, RAL 9002, 141.6 x 105.6 x 3 mm, 1 pc	B 21 16 407
	D (74 mm high)	flat, ABS, off-white, RAL 9002, 271.6 x 55.6 x 3 mm, 1 pc	B 21 29 307
	D (124 mm high)	Z1, ABS, off-white, RAL 9002, 271.6 x 105.6 x 3 mm, 1 pc	B 21 29 407
③ Infill panel	E	to close the interior of the case when using MEDITEC cases with 1 panel per side	B 21 16 707
	D	(case height 124 mm) + sloping control panel, ABS, off-white* <sup>3</sup>	B 21 29 707
④ Wall mounting brackets	E, D	for exterior wall mounting, PA, volcano, 4 pcs incl. screws	B 21 33 012
⑤ Stacking elements	E, D	for secure stacking of several devices, volcano, 4 pcs	B 21 34 012
⑥ Connectors	E, D	for secure connection of 2 side panels, simple pin and lock, 4 pcs	B 21 35 017
⑦ Set of screws	E, D	4 x ø 2.5 x 6 mm, for mounting PCBs	A 91 99 008



universal accessories on pages 178-187

\*<sup>2</sup> front / rear panel Z2 for case height 174 mm (cases with 2 side panels per side) on request

\*<sup>3</sup> can be used either above or below; closed at the front/rear with rear panel Z1 (separate article)