

Industrial Planetary gearheads

IP series

Ratio Options:

IP series gearheads are available in a wide range of ratios, many of which being from stock as shown below:

Single stage units	2 stage units	3 stage units
• 5:1	• 25:1	250:1
• 10:1	• 50:1	500:1
	• 100:1	1000:1

Standard ratios:

Gear ratio options shown in **bold** are usually available from stock.

Dimensions:

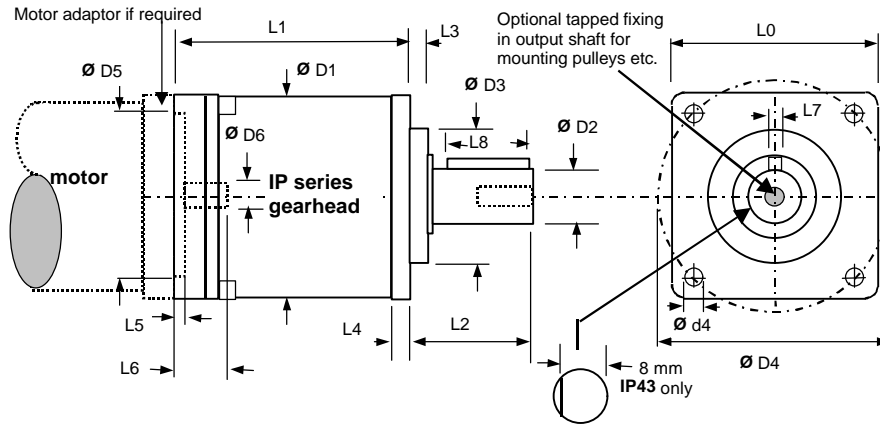


Table of dimensions: mm

Gearhead model		IP43			IP 57		
		MO1	MO2	MO3	MO1	MO2	MO3
Gearhead flange square	L0	42.8			57.2		
Gearhead Length	L1	47	56	66	54		
Ratios 3:1 4:1 5:1 10:1 25:1 50:1 100:1 250:1 500:1 1000:1					67.75	66 79.75	92.75
Shaft length from flange	L2	16			25.4		
Output Register length	L3	1.5			1.6		
Flange thickness	L4	4.3			5.2		
Input register length	L5	2.0			2.5		
Max. input shaft length	L6	To be advised			Dependent on adapter length		
Output shaft Key width	L7	See shaft flat details on IP43			3.2		
Output shaft key length	L8	Shaft flat length 15 mm			19.0		
Diametric dimensions							
Gearhead diameter	D1	42.8			57.2		
Output shaft diameter	D2	9.504 / 9.516 *			12.67 / 12.69 *		
Output register diameter	D3	22.2 / 22.225			38.05 / 38.10		
Mounting hole PCD	D4	50.8			66.68		
Mounting hole diameter	D4	3.78			5.1		
Input register diameter	D5	22.22 / 22.24			38.10 / 38.12		
Max. motor shaft dia.	D6	To be advised			8		

Specification

Gearhead	Number of stages	Maximum Continuous Torque * (Nm)	Max. Peak Torque* (Nm)	Typical Backlash (arc min.)	Efficiency	Max. Input Speed (rpm)	Max. Radial Load (N)	Max. Axial Load (N)
IP043-M01	1	3.3	6.0	20	92%			
IP043-M02	2	6.7	12	30	84%	6000	500	350
IP043-M03	3	10.0	20	40	78%			
IP057-M01	1	6.0	12	20	92%			
IP057-M02	2	12	24	30	84%	5000	500	350
IP057-M03	3	20	40	40	78%			

Note * De-rate by 10% for gear ratios 10:1 & 100:1