

# Rack Mount Kits

## SELECTOR GUIDE: RACK MOUNT KITS

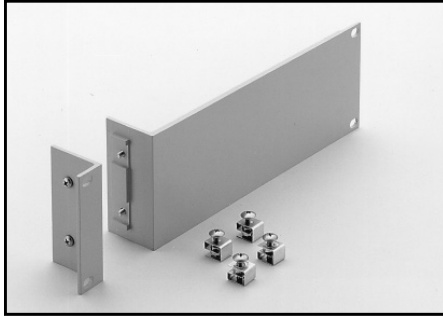
Instrument	Fixed Single	Fixed Dual	Shelf	Rear or Rail Support			
Series 2000 2182A Series 2300	Series 2500 2700 2701	6220 6221 6485	6487 6514 6517B	4288-1	4288-2	4288-9 <sup>3</sup> 4299-7	
Series 2100, Series 2400, 3390, 6430	4299-3	4299-4	4299-7				
Series 2260B			2260B-RMK-EIA 2260B-RMK-JIS				
Series 2268	2268-RMK-1	2268-RMK-1					
2290-5	2290-5-RMK-1	2290-5-RMK-2					
2290-10	2290-10-RMK-1	2290-10-RMK-2	4299-7				
2450, 2460, 2461, DMM7510	4299-8	4299-9 4299-10 <sup>1</sup> 4299-11 <sup>2</sup>					
Series 2600B	4299-1	4299-2					
2651A, 2657A, 708B	4299-6						
2750, System 46, System 46T							4288-7
707B	Included on 707B chassis						
Series 3700A							4288-10
4200-SCS/C or 4200-SCS/F							4200-RM
7002	7002-RMK-1						

1. Model 4299-10 mounts one Model 2450 and one Series 26XXB.
2. Model 4299-11 mounts one Model 2450 and one Series 2000, 2400, and all other 2U half-rack instruments except the Series 2200 and Series 2290 instruments.
3. Model 4288-9 is the recommended shelf for these models based on color.

# Rack Mount Kits

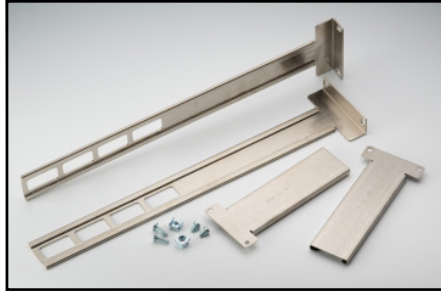
## Fixed Single Unit Rack Kit

(For mounting of one half-rack-width instrument or one full-rack-width instrument)



**4288-1:** For half-rack-width models.  
2U (3.5 in.) high.

For use with: Series 2000, 2182A, Series 2300, 2700, 2701, 6220, 6221, 6485, 6487, 6514, 6517B, 7001.

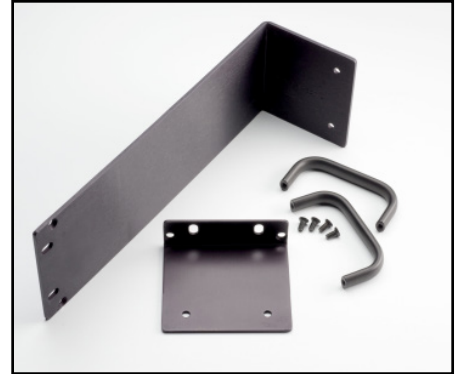


**4299-6:** For full-rack-width models.  
2U (3.5 in.) high.

For use with: 2651A, 2657A, 708A

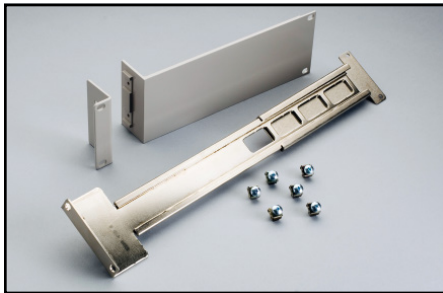
**4299-8:** For half-rack-width models.  
2U (3.5 in.) high.

For use with: 2450, 2460, 2461, DMM7510  
(graphical display models only)



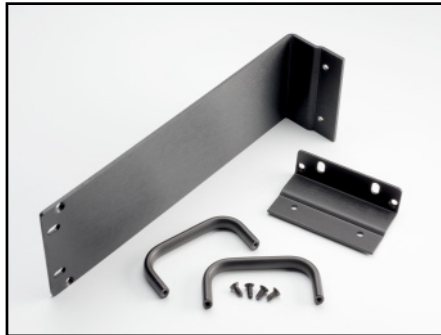
**2290-10-RMK-1:** For half-rack-width models.  
2U (3.5 in.) high.

For use with: 2290-10



**4299-1:** For half-rack-width models.  
2U (3.5 in.) high.

For use with: Series 2600B



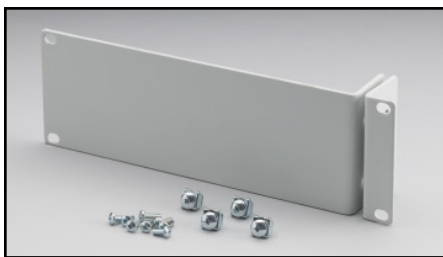
**2268-RMK-1:** For half-rack-width models.  
1U (1.75 in.) high.

For use with: Series 2268



**7002-RMK-1:** 4U (7.0 in.) high.  
Full-rack model.

For use with: 7002



**4299-3:** For half-rack-width models.  
2U (3.5 in.) high. Allows for mounting of  
a 2U Keysight Instrument as well.

For use with: Series 2100, Series 2400,  
3390, 6430



**2290-5-RMK-1:** For half-rack-width models.  
2U (3.5 in.) high.

For use with: 2290-5

# Rack Mount Kits

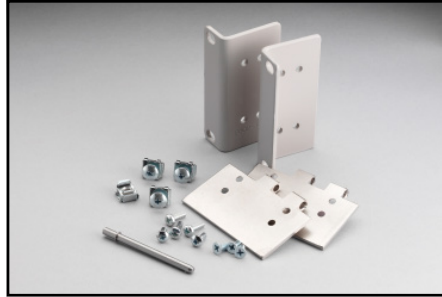
## Fixed Dual Unit Rack Kit

(For mounting two or more instruments in the width of a rack)



**4288-2:** For half-rack-width models. 2U (3.5 in.) high.

For use with: Series 2000, 2182A, Series 2300, 2700, 2701, 6220, 6221, 6485, 6487, 6514, 6517B, 7001



**4299-4:** For half-rack-width models. 2U (3.5 in.) high. Allows mounting a 2U Keithley instrument with a Keysight instrument.

For use with: Series 2100, Series 2400, 3390, 6430

**4299-9:** For half-rack-width models. 2U (3.5 in.) high.

For use with: 2450, 2460, 2461, DMM7510 (graphical display models only)

**4299-10:** For half-rack-width models. 2U (3.5 in.) high.

For use with: 2450, 2460, 2461, DMM7510 (graphical display models only), Series 2260B

**4299-11:** For half-rack-width models. 2U (3.5 in.) high.

For use with: 2450, 2460, 2461, DMM7510 (graphical display models only), Series 2000, Series 2400 or a 2U Keysight instrument

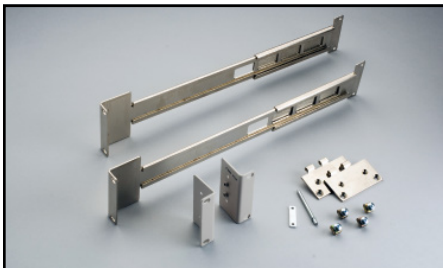
**2268-RMK-2:** For half-rack-width models. 1U (1.75 in.) high.

For use with: Series 2268



**2290-5-RMK-2:** For half-rack-width models. 2U (3.5 in.) high.

For use with: 2290-5



**4299-2:** For half-rack-width models. 2U (3.5 in.) high.

For use with: Series 2600B



**2290-10-RMK-2:** For half-rack-width models. 2U (3.5 in.) high.

For use with: 2290-10

# Rack Mount Kits

## Shelf Rack Kit

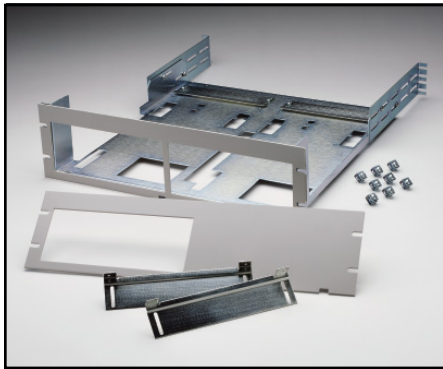
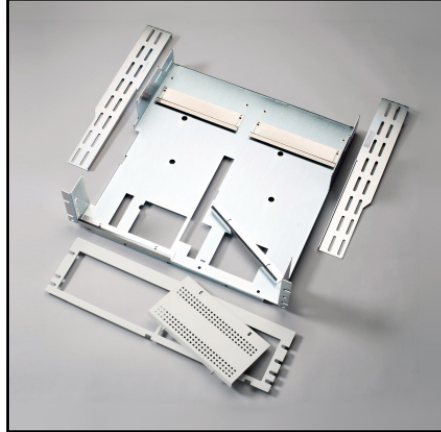
(For mounting of one or two instruments in a rack)

**2260B-RMK-EIA:** Supports the EIA rack standard. Allows for full-rack-width assembly configuration of sixth-, third-, and half-rack-width models. 3U (5.25 in.) high.

For use with: **Series 2260B**

**2260B-RMK-JIS:** Supports the JIS rack standard. Allows for full-rack-width assembly configuration of sixth-, third-, and half-rack-width models. 3U (5.25 in.) high.

For use with: **Series 2260B**



**4288-9:** Mounts 2U-high instruments in 3U-high rack space. 3U (5.25 in.) high.

For use with: **Series 2000, 2182A, Series 2300, 2700, 2701, 6220, 6221, 6485, 6487, 6514, 6517B, 7001**

### 4299-7 Universal Shelf Rack Kit:

Mounts 2U-high instruments in 3U-high rack space. 3U (5.25 in.) high.

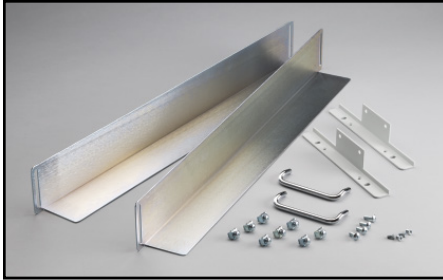
For use with: **Series 2000, Series 2100, 2182A, Series 2200, Series 2300, Series 2400 (Except graphical) 2700, 2701, 6220, 6221, 6430, 6485, 6487, 6514, 6517B, 7001**

**RMU 2U:** 3U (5.25 in.) high.

For use with: **2290-5 and 2290-10**

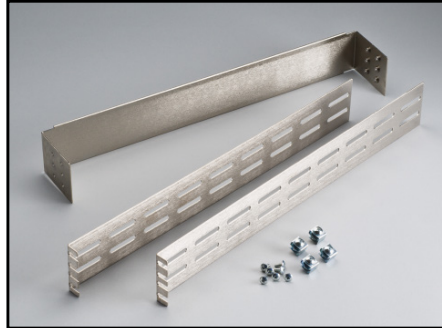
# Rack Mount Kits

## Rear/Rail Support Kits and Miscellaneous Rack Accessories



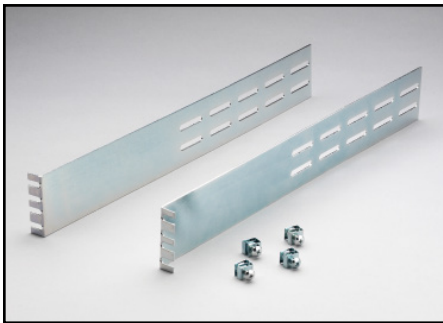
**4200-RM**

For use with: 4200-SCS



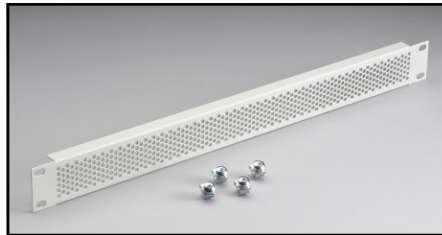
**4288-10**

For use with: Series 3700A



**4288-7**

For use with: 2750, System 46, System 46T



**4299-5:** 1U (1.75") vented panel.

For use with: Series 2600B



**376-7589-xx:** Cosmetic filler panel

For use with Series 2200

**4200-KEY-RM**

For use with: 4200-SCS