

FL SWITCH 1000N-8POE - Industrial Ethernet Switch



1343031

<https://www.phoenixcontact.com/in/products/1343031>

Please be informed that the data shown in this PDF document is generated from our online catalog. Please find the complete data in the user documentation. Our general terms of use for downloads are valid.



PoE+ Ethernet switch conforms to IEEE 802.3af/at, includes eight PoE RJ45 ports with 10/100 Mbps on all ports, automatic data transmission speed detection, autocrossing function, and QoS with a 120 W power budget

Your advantages

- RJ45 ports support a transmission speed of 10/100 Mbps
- QoS-prioritized (Quality of Service) messages
- Local diagnostic indicators with LEDs
- PROFINET PTCP filter for reliable communication on PROFINET networks
- Enhanced traffic prioritization for automation protocols
- Energy-efficient Ethernet in accord. with IEEE 802.3az
- PROFINET Conformance Class A for real-time data exchange
- Auto negotiation and autocrossing detection simplifies installation and setup
- Automatic detection of IEEE 802.3at or 802.3af powered devices
- POE status LED per port

Commercial data

Item number	1343031
Packing unit	1 pc
Minimum order quantity	1 pc
Product key	DNN115
GTIN	4063151654337
Weight per piece (including packing)	539 g
Weight per piece (excluding packing)	457 g
Country of origin	TW

FL SWITCH 1000N-8POE - Industrial Ethernet Switch



1343031

<https://www.phoenixcontact.com/in/products/1343031>

Technical data

Dimensions

Width	40 mm
Height	140.4 mm
Depth	92.4 mm

Notes

Notes on operation	Mode A PoE
Note on application	
Note on application	Only for industrial use

Material specifications

Housing material	Polycarbonate fiber reinforced
	Aluminum / steel sheet DC01

Mounting

Mounting type	DIN rail mounting
---------------	-------------------

Interfaces

Ethernet (RJ45)

Number of interfaces	8
Connection method	RJ45
Note on the connection method	Auto negotiation and autocrossing
Transmission speed	10/100 Mbps (full duplex)
Transmission physics	Ethernet in RJ45 twisted pair
Transmission length	100 m (per segment)
Signal LEDs	Data receive, link status, PoE
No. of channels	8 (RJ45 ports)

Ethernet (PoE)

Connection method	RJ45
Transmission speed	10/100 Mbps
Transmission physics	Ethernet RJ45
Transmission length	100 m (Between transmitter / receiver)
Signal LEDs	LNK/ACT, POE
No. of channels	8 (RJ45 ports)

Product properties

Product type	Switch
Product family	Unmanaged PoE Switches 1000
Type	Stand-Alone
MTTF	58 Years (MIL-HDBK-217F standard, temperature 25°C, operating cycle 100%)

FL SWITCH 1000N-8POE - Industrial Ethernet Switch



1343031

<https://www.phoenixcontact.com/in/products/1343031>

	521.3 Years (SN 29500 standard, temperature 25°C, operating cycle 21%)
	583.5 Years (Telcordia standard, 25°C temperature, 21% operating cycle (5 days a week, 8 hours a day))

Switch functions

Basic functions	PSE, complies with IEEE 802.3af/at
	Autonegotiation
	Store and Forward switching mode
MAC address table	2k
Status and diagnostic indicators	LEDs: U _S , link and activity per port
Additional functions	100 BASE-TX (IEEE 802.3u)
	Quality of Service (QoS) prioritization (IEEE 802.1p)
	Energy-efficient Ethernet (IEEE 802.3az)
	10Base-T (IEEE 802.3)

Security functions

Basic functions	PSE, complies with IEEE 802.3af/at
	Autonegotiation
	Store and Forward switching mode

Electrical properties

Maximum power dissipation for nominal condition	136 W (at 48 V DC)
Transmission medium	Copper

Supply

Supply voltage (DC)	24 V
Supply voltage range	20 V DC ... 57 V DC
Power supply connection	Via COMBICON, max. conductor cross section 2.5 mm ²
Residual ripple	3.6 V _{PP} (within the permitted voltage range)
Max. current consumption	7 A (at 20 V DC)
Typical current consumption	95 mA (at 24 V DC)

Connection data

Connection technology

Connection name	Power supply
pluggable	yes

Power supply

Connection method	Push-in spring connection
Conductor cross section, rigid	0.2 mm ² ... 2.5 mm ²
Conductor cross section, flexible	0.2 mm ² ... 2.5 mm ²
Conductor cross section AWG	24 ... 12
Conductor cross section, flexible, with ferrule, with plastic sleeve	0.25 mm ² ... 2.5 mm ²
Conductor cross section flexible, with ferrule without plastic sleeve	0.25 mm ² ... 2.5 mm ²

FL SWITCH 1000N-8POE - Industrial Ethernet Switch



1343031

<https://www.phoenixcontact.com/in/products/1343031>

Stripping length	10 mm
------------------	-------

Environmental and real-life conditions

Ambient conditions

Degree of protection	IP30
Ambient temperature (operation)	-10 °C ... 60 °C
Ambient temperature (storage/transport)	-40 °C ... 85 °C
Altitude	2000 m (maximum)
Permissible humidity (operation)	5 % ... 95 % (non-condensing)
Permissible humidity (storage/transport)	5 % ... 95 % (non-condensing)
Shock (operation)	30g (EN 60068-2-27)
Vibration (operation)	in acc. with IEC 60068-2-6: 5g, 150 Hz
Air pressure (operation)	79 kPa ... 108 kPa up to 2000 m above mean sea level (Without derating)
Air pressure (storage/transport)	79 kPa ... 108 kPa up to 2000 m above mean sea level (Without derating)

Approvals

Conformity/Approvals

Conformance	CE-compliant
-------------	--------------

EMC data

Electromagnetic compatibility	Conformance with EMC Directive 2014/30/EU
Conformance with EMC directives	EN 61000-6-2 EN 61000-4-2 (ESD) Criterion B
	EN 61000-6-2 EN 61000-4-3 (electromagnetic fields) Criterion A
	EN 61000-6-2 EN 61000-4-4 (EFT burst) Criterion A
	EN 61000-6-2 EN 61000-4-5 (surge) Criterion B
	EN 61000-6-2 EN 61000-4-6 (line noise immunity) Criterion A
	EN 61000-6-2 EN 61000-4-8 (electromagnetic fields) Criterion A
	EN 61000-6-2 Class A
Noise immunity	EN 61000-6-2:2005
Noise emission	EN 61000-6-4:2007 + A1:2011

System properties

Functionality

Basic functions	PSE, complies with IEEE 802.3af/at
	Autonegotiation
	Store and Forward switching mode

Signaling

Status display	LEDs: U _S , link and activity per port
----------------	---

FL SWITCH 1000N-8POE - Industrial Ethernet Switch



1343031

<https://www.phoenixcontact.com/in/products/1343031>

Approvals

🔗 To download certificates, visit the product detail page: <https://www.phoenixcontact.com/in/products/1343031>



cULus Listed

Approval ID: E238705

FL SWITCH 1000N-8POE - Industrial Ethernet Switch



1343031

<https://www.phoenixcontact.com/in/products/1343031>

Classifications

ECLASS

ECLASS-11.0	19170402
ECLASS-12.0	19170402
ECLASS-13.0	19170402

ETIM

ETIM 9.0	EC000734
----------	----------

Environmental product compliance

EU RoHS	
Fulfills EU RoHS substance requirements	Yes
Exemption	15(a), 7(a), 7(c)-I
China RoHS	
Environment friendly use period (EFUP)	EFUP-50
	An article-related China RoHS declaration table can be found in the download area for the respective article under "Manufacturer declaration". For all articles with EFUP-E, no China RoHS declaration table issued and required.
EU REACH SVHC	
REACH candidate substance (CAS No.)	Lead(CAS: 7439-92-1)

1343031

<https://www.phoenixcontact.com/in/products/1343031>

Accessories

QUINT4-PS/1AC/48DC/5 - Power supply unit

2904610

<https://www.phoenixcontact.com/in/products/2904610>



Primary-switched QUINT POWER power supply for DIN rail mounting with free choice of output characteristic curve and SFB (Selective Fuse Breaking) technology, input: 1-phase, output: 48 V DC / 5 A

QUINT4-PS/1AC/48DC/10 - Power supply unit

2904611

<https://www.phoenixcontact.com/in/products/2904611>



Primary-switched QUINT POWER power supply for DIN rail mounting with free choice of output characteristic curve and SFB (Selective Fuse Breaking) technology, input: 1-phase, output: 48 V DC / 10 A

FL SWITCH 1000N-8POE - Industrial Ethernet Switch



1343031

<https://www.phoenixcontact.com/in/products/1343031>

TRIO-PS-2G/1AC/48DC/5 - Power supply unit

2903159

<https://www.phoenixcontact.com/in/products/2903159>



Primary-switched TRIO power supply for DIN rail mounting, input: 1-phase, output: 48 V DC / 5 A, dynamic boost, tool-free fast connection technology for solid and stranded conductors with ferrule

TRIO-PS-2G/1AC/48DC/10 - Power supply unit

2903160

<https://www.phoenixcontact.com/in/products/2903160>



Primary-switched TRIO POWER power supply with push-in connection for DIN rail mounting, input: single phase, output: 48 V DC/10 A

FL SWITCH 1000N-8POE - Industrial Ethernet Switch



1343031

<https://www.phoenixcontact.com/in/products/1343031>

UNO-PS/1AC/24DC/150W - Power supply unit

2904376

<https://www.phoenixcontact.com/in/products/2904376>



Primary-switched UNO power supply for DIN rail mounting, input: 1-phase, output: 24 V DC/150 W

UNO-PS/1AC/24DC/240W - Power supply unit

2904372

<https://www.phoenixcontact.com/in/products/2904372>



Please use the following item in new systems: 1096432.
Primary-switched UNO power supply for DIN rail mounting, input: 1-phase, output: 24 V DC / 240 W

FL SWITCH 1000N-8POE - Industrial Ethernet Switch



1343031

<https://www.phoenixcontact.com/in/products/1343031>

UNO2-PS/1AC/48DC/240W - Power supply unit

1110155

<https://www.phoenixcontact.com/in/products/1110155>



Primary-switched power supply unit, UNO POWER, Screw connection, DIN rail mounting, input: 1-phase, output: 48 V DC / 5 A, adjustable from 42 V DC ... 56 V DC

MVSTBW 2,5/ 3-ST-5,08 GY - PCB connector

1783685

<https://www.phoenixcontact.com/in/products/1783685>



PCB connector, nominal cross section: 2.5 mm², color: gray, nominal current: 12 A, rated voltage (III/2): 320 V, contact surface: Sn, contact connection type: Socket, number of potentials: 3, number of rows: 1, number of positions: 3, number of connections: 3, product range: MVSTBW 2,5/...-ST, pitch: 5.08 mm, connection method: Screw connection with tension sleeve, screw head form: L Slotted, conductor/PCB connection direction: -90 °, locking clip: - Locking clip, plug-in system: COMBICON MSTB 2,5, locking: without, mounting method: without, type of packaging: packed in cardboard

FL SWITCH 1000N-8POE - Industrial Ethernet Switch



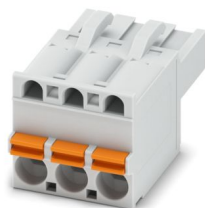
1343031

<https://www.phoenixcontact.com/in/products/1343031>

FKCT 2,5/ 3-ST KMGY - PCB connector

1998263

<https://www.phoenixcontact.com/in/products/1998263>



PCB connector, nominal cross section: 2.5 mm², color: light gray, nominal current: 12 A, rated voltage (III/2): 320 V, contact surface: Sn, contact connection type: Socket, number of potentials: 3, number of rows: 1, number of positions: 3, number of connections: 3, product range: FKCT 2,5/..-ST, pitch: 5 mm, connection method: Push-in spring connection, conductor/PCB connection direction: 0 °, locking clip: - Locking clip, plug-in system: COMBICON MSTB 2,5, locking: without, mounting method: without, type of packaging: packed in cardboard

FL DIN-RAIL ADAPTER 40 - Mounting panel

1085484

<https://www.phoenixcontact.com/in/products/1085484>



The FL DIN-RAIL ADAPTER 40 is designed to allow products 40 mm wide to be mounted flush to a standard 35 mm DIN rail, in any orientation.

FL SWITCH 1000N-8POE - Industrial Ethernet Switch



1343031

<https://www.phoenixcontact.com/in/products/1343031>

FL PANEL ADAPTER 40 - Mounting panel

1085486

<https://www.phoenixcontact.com/in/products/1085486>



The FL PANEL ADAPTER 40 is designed to allow products 40 mm wide to be mounted flush to a panel, in any orientation.

DT-LAN-CAT.6+ - Surge protection device

2881007

<https://www.phoenixcontact.com/in/products/2881007>



Surge protection in accordance with Class E_A (CAT6_A), for Gigabit Ethernet (up to 10 Gbps), token ring, FDDI/CDDI, ISDN, and DS1. Suitable for Power over Ethernet (PoE++ / 4PPoE) "Mode A" and "Mode B". RJ45 attachment plug with separate grounding cable and ground connection snap-on foot for NS 35 DIN rails.

FL SWITCH 1000N-8POE - Industrial Ethernet Switch



1343031

<https://www.phoenixcontact.com/in/products/1343031>

FL CAT5 PATCH 0,5 - Patch cable

2832263

<https://www.phoenixcontact.com/in/products/2832263>



Patch cable, CAT5, assembled, 0.5 m

FL CAT5 PATCH 1,0 - Patch cable

2832276

<https://www.phoenixcontact.com/in/products/2832276>



Patch cable, CAT5, assembled, 1 m

FL SWITCH 1000N-8POE - Industrial Ethernet Switch



1343031

<https://www.phoenixcontact.com/in/products/1343031>

FL CAT5 PATCH 2,0 - Patch cable

2832289

<https://www.phoenixcontact.com/in/products/2832289>

Patch cable, CAT5, assembled, 2 m

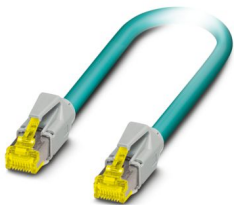


NBC-R4AC-R4AC-IE8A/.../... - Patch cable

1411854

<https://www.phoenixcontact.com/in/products/1411854>

Patch cable, degree of protection: IP20, number of positions: 8, 10 Gbps, CAT6_A, cable outlet: straight, Ethernet



FL SWITCH 1000N-8POE - Industrial Ethernet Switch



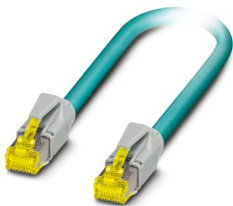
1343031

<https://www.phoenixcontact.com/in/products/1343031>

NBC-R4AC/10G-R4AC/10G-94F/2,0 - Patch cable

1408360

<https://www.phoenixcontact.com/in/products/1408360>

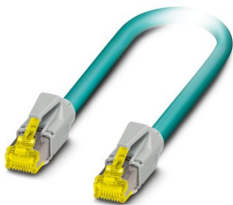


Patch cable, CAT6_A, 4-pair, shielded, connection not crossed (line), assembled at both ends with RJ45/IP20 connectors, outer sheath material: PUR, length: 2.0 m

NBC-R4AC/10G-R4AC/10G-94F/3,0 - Patch cable

1408365

<https://www.phoenixcontact.com/in/products/1408365>



Patch cable, CAT6_A, 4-pair, shielded, connection not crossed (line), assembled at both ends with RJ45/IP20 connectors, outer sheath material: PUR, length: 3.0 m

FL SWITCH 1000N-8POE - Industrial Ethernet Switch



1343031

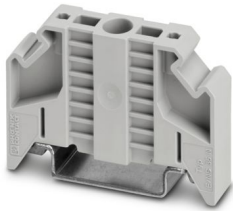
<https://www.phoenixcontact.com/in/products/1343031>

E/NS 35 N - End bracket

0800886

<https://www.phoenixcontact.com/in/products/0800886>

End clamp, width: 9.5 mm, color: gray

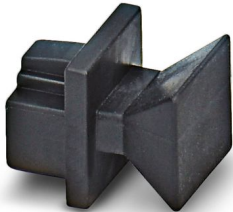


FL RJ45 PROTECT CAP - Dust protection

2832991

<https://www.phoenixcontact.com/in/products/2832991>

Dust protection caps for RJ45 socket



Phoenix Contact 2025 © - all rights reserved

<https://www.phoenixcontact.com>

PHOENIX CONTACT (I) Pvt. Ltd.

A-58/2, Okhla Industrial Area, Phase - II, New Delhi-110 020

+91.1275.71420

info@phoenixcontact.co.in