

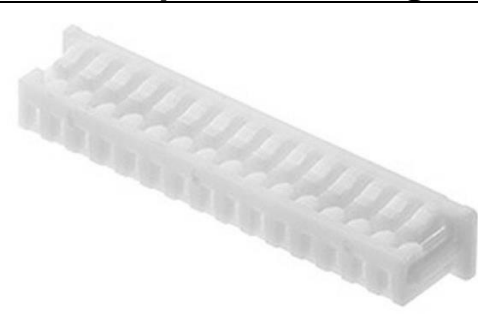
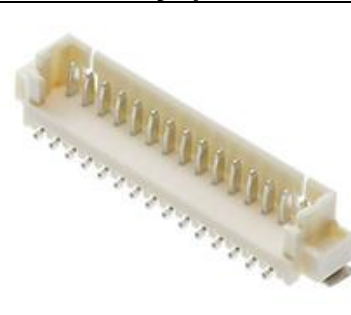


# PicoBlade 1.25

## WIRE TO BOARD CONNECTOR SYSTEM (TIN-PLATING SMT)

Receptacle Terminal (26 AWG – 28 AWG)	Receptacle Terminal (28 AWG – 32 AWG)
	
Series: <a href="#">50079</a>	Series: <a href="#">50058</a>

Receptacle Housing	Plug Assembly (Vertical Type)
	
Series: <a href="#">51021</a>	Series: <a href="#">53398</a>

[PicoBlade Connector System Web Page](#)

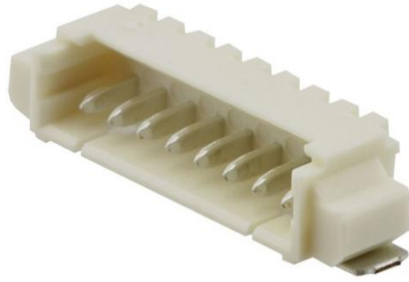
[TABLE OF CONTENT](#)



THIS DOCUMENT CONTAINS INFORMATION THAT IS PROPRIETARY TO MOLEX ELECTRONIC TECHNOLOGIES, LLC AND SHOULD NOT BE USED WITHOUT WRITTEN PERMISSION

REVISION DESCRIPTION								<b>PICOBLADE 1.25 SMT TIN PLATING SMART SPEC</b>	
CHANGE NO.	666482								
REVISED BY	MIKEDA01	DATE	2021/06/09	DOC TYPE	DOC TYPE DESCRIPTION		DOC PART	SERIES	
REV APPR BY	KOMURAKAMI	DATE	2021/06/25	PS	PRODUCT SPECIFICATION WORD		000	51021	
INITIAL RELEASE				CUSTOMER		DOCUMENT NUMBER		REVISION	SHEET
INITIAL DRWN	MIKEDA01	DATE	2020/06/25	GENERAL		<b>510211024-PS</b>		<b>B</b>	1 OF 18
INITIAL APPR	AIDA	DATE	2020/08/07						

**Plug Assembly (RA Type)**



Series: [53261](#)

[PicoBlade Connector System Web Page](#)

[TABLE OF CONTENT](#)



THIS DOCUMENT CONTAINS INFORMATION THAT IS PROPRIETARY TO MOLEX ELECTRONIC TECHNOLOGIES, LLC AND SHOULD NOT BE USED WITHOUT WRITTEN PERMISSION

REVISION DESCRIPTION	<b>PICOBLADE 1.25 SMT TIN PLATING SMART SPEC</b>						
CHANGE NO.							
REVISED BY	MIKEDA01	DATE	2021/06/09	DOC TYPE	DOC TYPE DESCRIPTION	DOC PART	SERIES
REV APPR BY	KOMURAKAMI	DATE	2021/06/25	PS	PRODUCT SPECIFICATION WORD	000	51021
INITIAL RELEASE				CUSTOMER	DOCUMENT NUMBER	REVISION	SHEET
INITIAL DRWN	MIKEDA01	DATE	2020/06/25	GENERAL	<b>510211024-PS</b>	<b>B</b>	2 OF 18
INITIAL APPR	AIDA	DATE	2020/08/07				

**Table of Contents**

<u>ITEMS</u>	<u>PAGE</u>
<b>1.0 SCOPE</b> .....	<b>4</b>
<b>2.0 PRODUCT DESCRIPTION</b> .....	<b>4</b>
2.1 DESCRIPTION, SERIES NUMBER, AND LINKS .....	4
2.2 DIMENSIONS, MATERIALS, PLATINGS .....	4
2.3 ENVIRONMENTAL CONFORMANCE .....	4
2.4 SAFETY AGENCY LISTINGS.....	4
<b>3.0 APPLICABLE DOCUMENTS AND SPECIFICATION</b> .....	<b>5</b>
3.1 MOLEX DOCUMENTS .....	5
<b>4.0 ELECTRICAL PERFORMANCE RATINGS</b> .....	<b>5</b>
4.1 VOLTAGE .....	5
4.2 RATED CURRENT AND APPLICABLE WIRES .....	5
4.3 CURRENT DERATING .....	5
4.4 TEMPERATURE.....	6
4.5 DURABILITY .....	6
<b>5.0 QUALIFICATION</b> .....	<b>6</b>
<b>6.0 PERFORMANCE</b> .....	<b>7</b>
6.1 ELECTRICAL PERFORMANCE .....	7
6.2 MECHANICAL PERFORMANCE .....	8
6.3 ENVIRONMENTAL PERFORMANCE .....	9
<b>7.0 INSERTION / WITHDRAWAL FORCE</b> .....	<b>11</b>
<b>8.0 CONTACT RESISTANCE MEASURING POINT</b> .....	<b>12</b>
<b>9.0 SOLDER INFORMATION</b> .....	<b>13</b>
9.1 SOLDER PROCESS TEMPERATURES .....	13
9.2 SOLDERING PROFILE .....	13
<b>10.0 PACKAGING</b> .....	<b>14</b>
<b>11.0 INSTRUCTION UPON USAGE OF CRIMP TERMINAL</b> .....	<b>14</b>
<b>12.0 CABLE TIE AND / OR TWIST TIE LOCATION</b> .....	<b>14</b>
<b>13.0 NOTE</b> .....	<b>15</b>
<b>14.0 INSTRUCTION UPON USAGE</b> .....	<b>18</b>

[PicoBlade Connector System Web Page](#)

[TABLE OF CONTENT](#)



THIS DOCUMENT CONTAINS INFORMATION THAT IS PROPRIETARY TO MOLEX ELECTRONIC TECHNOLOGIES, LLC AND SHOULD NOT BE USED WITHOUT WRITTEN PERMISSION

REVISION DESCRIPTION		<b>PICOBLADE 1.25 SMT TIN PLATING SMART SPEC</b>					
CHANGE NO.	666482						
REVISED BY	MIKEDA01	DATE	2021/06/09	DOC TYPE	DOC TYPE DESCRIPTION	DOC PART	SERIES
REV APPR BY	KOMURAKAMI	DATE	2021/06/25	PS	PRODUCT SPECIFICATION WORD	000	51021
INITIAL RELEASE				CUSTOMER		DOCUMENT NUMBER	
INITIAL DRWN	MIKEDA01	DATE	2020/06/25	GENERAL		<b>510211024-PS</b>	
INITIAL APPR	AIDA	DATE	2020/08/07				

**1.0 SCOPE**

This product specification covers the PicoBlade 1.25 mm W/B CONNECTOR (SINGLE-ROW SMT TIN PLATING TYPE) series.

**2.0 PRODUCT DESCRIPTION**

**2.1 DESCRIPTION, SERIES NUMBER, AND LINKS**

DESCRIPTION		PART NUMBER	DRAWING NUMBER
Receptacle Terminal (AWG #28-32)		<a href="#">500588*00</a>	SD-50058-8X00
Receptacle Terminal (AWG #26-28)		<a href="#">500798*00</a>	SD-50079-001
Receptacle Housing		<a href="#">51021**00</a>	SD-51021-005
Embossed tape packaging of Plug Assembly (High barrier package including desiccant)	Vertical Type (Natural)	<a href="#">53398**71</a>	533980000-SD
	Right Angle Type (Natural)	<a href="#">53261**71</a>	SD-53261-023 SD-53261-024
	Right Angle Type (Black)	<a href="#">53261**27</a>	SD-53261-025 SD-53261-026

**2.2 DIMENSIONS, MATERIALS, PLATINGS**

See the appropriate sales drawings for the information on dimensions, materials, platings and markings.

**2.3 ENVIRONMENTAL CONFORMANCE**

To find product compliance information:

- a. [Go to molex.com](http://molex.com)
- b. Enter the part number in the search field.
- c. At the bottom of the page go to "Environmental" to see compliance status.

**2.4 SAFETY AGENCY LISTINGS**

Product series	File Number
53261	UL: E29179
	CSA: LR19980
53398	UL: E29179

[PicoBlade Connector System Web Page](#)

[TABLE OF CONTENT](#)



THIS DOCUMENT CONTAINS INFORMATION THAT IS PROPRIETARY TO MOLEX ELECTRONIC TECHNOLOGIES, LLC AND SHOULD NOT BE USED WITHOUT WRITTEN PERMISSION

REVISION DESCRIPTION	PICOBLADE 1.25 SMT TIN PLATING SMART SPEC						
CHANGE NO.	666482						
REVISED BY	MIKEDA01	DATE	2021/06/09	DOC TYPE	DOC TYPE DESCRIPTION	DOC PART	SERIES
REV APPR BY	KOMURAKAMI	DATE	2021/06/25	PS	PRODUCT SPECIFICATION WORD	000	51021
INITIAL RELEASE			CUSTOMER		DOCUMENT NUMBER	REVISION	SHEET
INITIAL DRWN	MIKEDA01	DATE	2020/06/25	GENERAL	510211024-PS	B	4 OF 18
INITIAL APPR	AIDA	DATE	2020/08/07				

**3.0 APPLICABLE DOCUMENTS AND SPECIFICATION**

**3.1 MOLEX DOCUMENTS**

[PicoBlade 1.25 w-t-b Connector System Application summary 510210000-AS](#)  
 ATS – Application Tooling Specification\*

*\*Application Tooling Specification for terminals is not provided in this document. ATS for terminals can be available from respective terminal part number page in Molex.com*

**4.0 ELECTRICAL PERFORMANCE RATINGS**

**4.1 VOLTAGE**

125 V AC (rms) / DC

**4.2 RATED CURRENT AND APPLICABLE WIRES**

Wire Size	Rated Current (MAX.)	Insulation O.D.
AWG #26	1.0 A	Insulation Diameter φ 0.5 ~φ1.04 mm
AWG #28	1.0 A	
AWG #30	1.0 A	
AWG #32	0.8 A	

**4.3 CURRENT DERATING**

AWG	2-circuits	8-circuits	15-circuits
	Amps (A)	Amps (A)	Amps (A)
26	2.5	1.5	1.0
28	2.0	1.5	1.0
30	1.5	1.0	1.0
32	1.5	1.0	0.8

1. Values are for REFERENCE ONLY.
2. Current deratings are based on not exceeding 30 °C Temperature Rise
3. Temperature Rise is measured in barrel area of crimp terminal.
4. PCB trace design can greatly affect temperature rise results.
5. Data is for all circuits powered.

[PicoBlade Connector System Web Page](#)

[TABLE OF CONTENT](#)



THIS DOCUMENT CONTAINS INFORMATION THAT IS PROPRIETARY TO MOLEX ELECTRONIC TECHNOLOGIES, LLC AND SHOULD NOT BE USED WITHOUT WRITTEN PERMISSION

REVISION DESCRIPTION	<b>PICOBLADE 1.25 SMT TIN PLATING SMART SPEC</b>							
CHANGE NO.	666482							
REVISED BY	MIKEDA01	DATE	2021/06/09	DOC TYPE	DOC TYPE DESCRIPTION		DOC PART	SERIES
REV APPR BY	KOMURAKAMI	DATE	2021/06/25	PS	PRODUCT SPECIFICATION WORD		000	51021
INITIAL RELEASE				CUSTOMER	DOCUMENT NUMBER		REVISION	SHEET
INITIAL DRWN	MIKEDA01	DATE	2020/06/25	GENERAL	<b>510211024-PS</b>		<b>B</b>	5 OF 18
INITIAL APPR	AIDA	DATE	2020/08/07					

**4.4 TEMPERATURE**

Ambient Temperature Range\*1\*2\*3 : - 40 °C ~ + 105 °C  
Not freeze in low temperature

Storage condition after opening the Humidity Prevention Package<sup>\*4</sup>  
(Apply to 53398\*\*71 / 53261\*\*71)

Temperature : -5 °C ~ +35 °C  
Humidity : 70% RH MAX (No condensation)

NOTE:

- \*1. Non-operating connectors after reflow must follow the operating temperature range condition.
- \*2. Including terminal temperature rise.
- \*3. Applicable wires must also meet the specified temperature range.
- \*4. Refer to 【12. Instruction upon usage】 .

**4.5 DURABILITY**

Plating Type	Number of Cycles
Tin Plated	30 cycles

**5.0 QUALIFICATION**

Sample selection is in accordance with EIA-364-1000.

[PicoBlade Connector System Web Page](#)

[TABLE OF CONTENT](#)



THIS DOCUMENT CONTAINS INFORMATION THAT IS PROPRIETARY TO MOLEX ELECTRONIC TECHNOLOGIES, LLC AND SHOULD NOT BE USED WITHOUT WRITTEN PERMISSION

REVISION DESCRIPTION	<b>PICOBLADE 1.25 SMT TIN PLATING SMART SPEC</b>						
CHANGE NO.	666482						
REVISED BY	MIKEDA01	DATE	2021/06/09	DOC TYPE	DOC TYPE DESCRIPTION	DOC PART	SERIES
REV APPR BY	KOMURAKAMI	DATE	2021/06/25	PS	PRODUCT SPECIFICATION WORD	000	51021
INITIAL RELEASE				CUSTOMER	DOCUMENT NUMBER	REVISION	SHEET
INITIAL DRWN	MIKEDA01	DATE	2020/06/25	GENERAL	<b>510211024-PS</b>	<b>B</b>	6 OF 18
INITIAL APPR	AIDA	DATE	2020/08/07				

**6.0 PERFORMANCE**

**6.1 ELECTRICAL PERFORMANCE**

ITEM	DESCRIPTION	TEST CONDITION	REQUIREMENT	
6.1.1	Contact Resistance	Mate connectors and measured by dry circuit, 20 mV MAX., 10 mA. MAX. (JIS C5402-2-1)	20 milliohms MAX.	
6.1.2	Insulation Resistance	Apply 500 V DC between adjacent terminals or terminal and ground. (JIS C5402-3-1 / MIL-STD-202 Method 302)	100 Megohms MIN.	
6.1.3	Dielectric Strength	Mate connectors, apply 250 V AC (rms) for 1 minute between adjacent terminals or terminal and ground. (JIS C5402-4-1/MIL-STD-202 Method 301)	No Damage on function	
6.1.4	Contact Resistance on crimped portion	Crimp the applicable wire to the terminal, measured by dry circuit, 20 mV MAX., 10 mA. MAX.	5 milliohms MAX.	
6.1.5	Temperature Rise	Mate connectors and all crimp terminals shall be connected in a direct series. The temperature rise shall be measured when the terminal reaches thermal equilibrium allowable current. (UL498)	Temperature Rise	30 °C MAX.

[PicoBlade Connector System Web Page](#)

[TABLE OF CONTENT](#)



THIS DOCUMENT CONTAINS INFORMATION THAT IS PROPRIETARY TO MOLEX ELECTRONIC TECHNOLOGIES, LLC AND SHOULD NOT BE USED WITHOUT WRITTEN PERMISSION

REVISION DESCRIPTION	<b>PICOBLADE 1.25 SMT TIN PLATING SMART SPEC</b>						
CHANGE NO.	666482						
REVISED BY	MIKEDA01	DATE	2021/06/09	DOC TYPE	DOC TYPE DESCRIPTION	DOC PART	SERIES
REV APPR BY	KOMURAKAMI	DATE	2021/06/25	PS	PRODUCT SPECIFICATION WORD	000	51021
INITIAL RELEASE				CUSTOMER	DOCUMENT NUMBER	REVISION	SHEET
INITIAL DRWN	MIKEDA01	DATE	2020/06/25	GENERAL	<b>510211024-PS</b>	<b>B</b>	7 OF 18
INITIAL APPR	AIDA	DATE	2020/08/07				

**6.2 MECHANICAL PERFORMANCE**

ITEM	DESCRIPTION	TEST CONDITION		REQUIREMENT	
6.2.1	Insertion and Withdrawal Force	Insert and withdraw connectors at the speed rate of 25 ± 3 mm/minute.		Refer to section 7	
6.2.2	Crimping Pull out Force	Fix the crimped terminal to the jig, apply axial pull out force on the wire at the speed rate of 25 ± 3 mm/minute. (JIS C5402-16-4)	AWG #26	19.6 N {2.0 kgf} MIN	
			AWG #28	9.8 N {1.0 kgf} MIN	
			AWG #30	4.9 N {0.5 kgf} MIN	
			AWG #32	3.0 N {0.3 kgf} MIN	
6.2.3	Crimp Terminal Insertion Force	Insert the crimped terminal into the housing.		4.9 N {0.5 kgf} MAX	
6.2.4	Crimp Terminal Retention Force	Apply axial pull out force at the speed rate of 25 ± 3 mm/minute on the crimped terminal assembled in the housing.		4.9 N {0.5 kgf} MIN	
6.2.5	Header Terminal Retention Force	Apply axial push out force at the speed rate of 25 ± 3 mm/minute on the terminal assembled in the housing.		4.9 N {0.5 kgf} MIN	
6.2.6	Repeated Insertion / Withdrawal	Insert and withdraw connectors 30 cycles repeatedly by rate of less than 10 cycles per minute.		Contact Resistance	40 milliohms MAX.
6.2.7	Vibration	Mate connectors and subject to the following vibration conditions, for a period of 2 hours in each of 3 mutually perpendicular axes, passing DC 1mA during the test. (Fix the cable at test.) Amplitude : 1.5 mm P-P Frequency : 10~55~10 Hz in 1 minute. Duration : 2 hours in each X.Y.Z. axes. (JIS C 60068-2-6 / MIL-STD-202 Method 201)		Appearance	No Damage on function
				Contact Resistance	40 milliohms MAX.
				Discontinuity	1.0 microsecond MAX.
6.2.8	Mechanical Shock	Mate connectors and subject to the following shock conditions. 3 shocks shall be applied 6 directions along 3 mutually perpendicular axes (±x, ±y, ±z, each), passing DC 1 mA current during the test. (Total of 18 shocks) Test pulse : Half Sine Peak value : 490 m/s <sup>2</sup> {50 G} Duration : 11 ms (JIS C60068-2-27 / MIL-STD-202 Method 213)		Appearance	No Damage on function
				Contact Resistance	40 milliohms MAX.
				Discontinuity	1.0 microsecond MAX.

[PicoBlade Connector System Web Page](#)

[TABLE OF CONTENT](#)



THIS DOCUMENT CONTAINS INFORMATION THAT IS PROPRIETARY TO MOLEX ELECTRONIC TECHNOLOGIES, LLC AND SHOULD NOT BE USED WITHOUT WRITTEN PERMISSION

REVISION DESCRIPTION	<b>PICOBLADE 1.25 SMT TIN PLATING SMART SPEC</b>						
CHANGE NO.	666482						
REVISED BY	MIKEDA01	DATE	2021/06/09	DOC TYPE	DOC TYPE DESCRIPTION	DOC PART	SERIES
REV APPR BY	KOMURAKAMI	DATE	2021/06/25	PS	PRODUCT SPECIFICATION WORD	000	51021
INITIAL RELEASE				CUSTOMER	DOCUMENT NUMBER	REVISION	SHEET
INITIAL DRWN	MIKEDA01	DATE	2020/06/25	GENERAL	<b>510211024-PS</b>	<b>B</b>	8 OF 18
INITIAL APPR	AIDA	DATE	2020/08/07				



**6.3 ENVIRONMENTAL PERFORMANCE**

ITEM	DESCRIPTION	TEST CONDITION	REQUIREMENT	
6.3.1	Temperature Cycling	Mate connectors and subject to the following conditions for 5 cycles. Upon completion of the exposure period, the test specimens shall be conditioned at ambient room conditions for 1 to 2 hours, after which the specified measurements shall be performed. 5 cycles of : a) - 55 ± 3 °C 30 minutes b) + 105 ± 2 °C 30 minutes Shift time : Within 5 minutes (JIS C60068-2-14)	Appearance	No Damage on function
			Contact Resistance	40 milliohms MAX
6.3.2	Heat Resistance	Mate connectors and expose to 105 ± 2 °C for 96 hours. Upon completion of the exposure period, the test specimens shall be conditioned at ambient room conditions for 1 to 2 hours, after which the specified measurements shall be performed. (JIS C60068-2-2 / MIL-STD-202 Method 108)	Appearance	No Damage on function
			Contact Resistance	40 milliohms MAX
6.3.3	Cold Resistance	Mate connectors and expose to -40 ± 3 °C for 96 hours. Upon completion of the exposure period, the test specimens shall be conditioned at ambient room conditions for 1 to 2 hours, after which the specified measurements shall be performed. (JIS C60068-2-1)	Appearance	No Damage on function
			Contact Resistance	40 milliohms MAX
6.3.4	Humidity	Mate connectors and expose to 60 ± 2 °C, relative humidity 90 to 95% for 96 hours. Upon completion of the exposure period, the test specimens shall be conditioned at ambient room conditions for 1 to 2 hours, after which the specified measurements shall be performed. (JIS C60068-2-78 / MIL-STD-202 Method 103)	Appearance	No Damage on function
			Contact Resistance	40 milliohms MAX
			Dielectric Strength	Must meet 6.1.3
			Insulation Resistance	10 Megaohms MIN

[PicoBlade Connector System Web Page](#)

[TABLE OF CONTENT](#)



THIS DOCUMENT CONTAINS INFORMATION THAT IS PROPRIETARY TO MOLEX ELECTRONIC TECHNOLOGIES, LLC AND SHOULD NOT BE USED WITHOUT WRITTEN PERMISSION

REVISION DESCRIPTION	<b>PICOBLADE 1.25 SMT TIN PLATING SMART SPEC</b>						
CHANGE NO.	666482						
REVISED BY	MIKEDA01	DATE	2021/06/09	DOC TYPE	DOC TYPE DESCRIPTION	DOC PART	SERIES
REV APPR BY	KOMURAKAMI	DATE	2021/06/25	PS	PRODUCT SPECIFICATION WORD	000	51021
INITIAL RELEASE				CUSTOMER	DOCUMENT NUMBER	REVISION	SHEET
INITIAL DRWN	MIKEDA01	DATE	2020/06/25	GENERAL	<b>510211024-PS</b>	<b>B</b>	9 OF 18
INITIAL APPR	AIDA	DATE	2020/08/07				

**6.3 ENVIRONMENTAL PERFORMANCE CONTINUED**

ITEM	DESCRIPTION	TEST CONDITION	REQUIREMENT	
6.3.5	Salt Spray	Mate connectors and expose to the following salt mist conditions. Upon completion of the exposure period, salt deposits shall be removed by a gentle wash or dip in running water, after which the specified measurements shall be performed. NaCl solution Concentration : 5 ± 1% Spray time : 48 ± 4 hours Ambient temperature : 35 ± 2 °C (JIS 60068-2-11 / MIL-STD-202 Method 101)	Appearance	No Damage on function
			Contact Resistance	40 milliohms MAX
6.3.6	SO <sub>2</sub> Gas	Mated connectors and expose to the conditions of 50 ± 5 ppm SO <sub>2</sub> gas ambient temperature 40 ± 2 °C for 24 hours.	Appearance	No Damage on function
			Contact Resistance	40 milliohms MAX
6.3.7	NH <sub>3</sub> Gas	Mated connectors and expose to the conditions of NH <sub>3</sub> gas evaporating from 28% NH <sub>3</sub> solution for 40 minutes. (Rate is 25ml per 1L)	Appearance	No Damage on function
			Contact Resistance	40 milliohms MAX
6.3.8	Solderability	Dip terminal or pin into immerse the area up to 0.5 mm from the bottom of the housing into solder molten at 245 ± 3 °C for 3 ± 0.5 sec.	Solder Wetting	95% of immersed area must show no voids, pin holes
6.3.9	Resistance to Soldering Heat	(Reflow by IR Reflow Machine) Using the reflow profile condition below section 10.2, the product was reflowed.	Appearance	No Damage on function
		(Reflow by Manual Soldering iron) Using a soldering iron (350 ± 10 °C for 5 seconds max.) heat up the area 0.5 mm from the tip of the solder tails and fitting nails. However, do not apply excessive pressure to either the terminals.		

( ) : Reference Standard  
{ } : Reference Unit

[PicoBlade Connector System Web Page](#)

[TABLE OF CONTENT](#)



THIS DOCUMENT CONTAINS INFORMATION THAT IS PROPRIETARY TO MOLEX ELECTRONIC TECHNOLOGIES, LLC AND SHOULD NOT BE USED WITHOUT WRITTEN PERMISSION

REVISION DESCRIPTION	<b>PICOBLADE 1.25 SMT TIN PLATING SMART SPEC</b>						
CHANGE NO.	666482						
REVISED BY	MIKEDA01	DATE	2021/06/09	DOC TYPE	DOC TYPE DESCRIPTION	DOC PART	SERIES
REV APPR BY	KOMURAKAMI	DATE	2021/06/25	PS	PRODUCT SPECIFICATION WORD	000	51021
INITIAL RELEASE				CUSTOMER	DOCUMENT NUMBER	REVISION	SHEET
INITIAL DRWN	MIKEDA01	DATE	2020/06/25	GENERAL	<b>510211024-PS</b>	<b>B</b>	10 OF 18
INITIAL APPR	AIDA	DATE	2020/08/07				

**7.0 INSERTION / WITHDRAWAL FORCE**

No of CKT	Unit	Insertion force (MAX)			Withdrawal force (MIN)		
		1st	6th	30th	1st	6th	30th
2	N { kgf }	19.6 { 2.0 }	17.6 { 1.8 }	15.6 { 1.6 }	2.8 { 0.28 }	2.3 { 0.23 }	1.8 { 0.18 }
3	N { kgf }	24.5 { 2.5 }	22.5 { 2.3 }	20.5 { 2.1 }	3.0 { 0.30 }	2.5 { 0.25 }	2.0 { 0.20 }
4	N { kgf }	29.4 { 3.0 }	27.4 { 2.8 }	25.4 { 2.6 }	3.3 { 0.33 }	2.8 { 0.28 }	2.3 { 0.23 }
5	N { kgf }	34.3 { 3.5 }	32.3 { 3.3 }	30.3 { 3.1 }	3.8 { 0.38 }	3.3 { 0.33 }	2.8 { 0.28 }
6	N { kgf }	39.2 { 4.0 }	37.2 { 3.8 }	35.2 { 3.6 }	4.3 { 0.43 }	3.8 { 0.38 }	3.3 { 0.33 }
7	N { kgf }	44.1 { 4.5 }	42.1 { 4.3 }	40.1 { 4.1 }	4.7 { 0.48 }	4.3 { 0.43 }	3.8 { 0.38 }
8	N { kgf }	49.0 { 5.0 }	47.0 { 4.8 }	45.0 { 4.6 }	5.2 { 0.53 }	4.7 { 0.48 }	4.3 { 0.43 }
9	N { kgf }	53.9 { 5.5 }	51.9 { 5.3 }	49.9 { 5.1 }	5.5 { 0.56 }	5.0 { 0.51 }	4.5 { 0.46 }
10	N { kgf }	58.8 { 6.0 }	56.8 { 5.8 }	54.8 { 5.6 }	5.8 { 0.59 }	5.3 { 0.54 }	4.8 { 0.49 }
11	N { kgf }	63.7 { 6.5 }	61.7 { 6.3 }	59.7 { 6.1 }	6.1 { 0.62 }	5.6 { 0.57 }	5.1 { 0.52 }
12	N { kgf }	68.6 { 7.0 }	66.6 { 6.8 }	64.6 { 6.6 }	6.4 { 0.65 }	5.9 { 0.60 }	5.4 { 0.55 }
13	N { kgf }	73.5 { 7.5 }	71.5 { 7.3 }	69.5 { 7.1 }	6.7 { 0.68 }	6.2 { 0.63 }	5.7 { 0.58 }
14	N { kgf }	78.4 { 8.0 }	76.4 { 7.8 }	74.4 { 7.6 }	7.0 { 0.71 }	6.5 { 0.66 }	6.0 { 0.61 }
15	N { kgf }	83.3 { 8.5 }	81.3 { 8.3 }	79.3 { 8.1 }	7.3 { 0.74 }	6.8 { 0.69 }	6.3 { 0.64 }
17	N { kgf }	93.1 { 9.5 }	91.2 { 9.3 }	89.2 { 9.1 }	7.9 { 0.8 }	7.4 { 0.75 }	6.9 { 0.70 }

[PicoBlade Connector System Web Page](#)

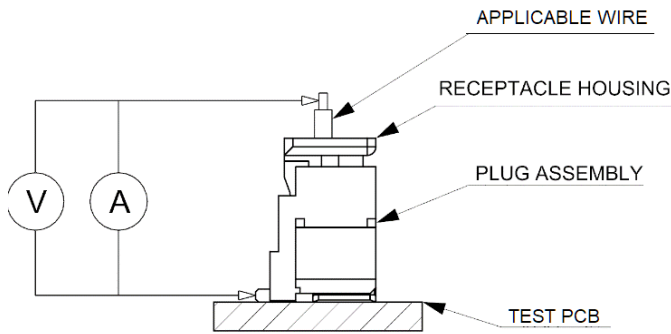
[TABLE OF CONTENT](#)



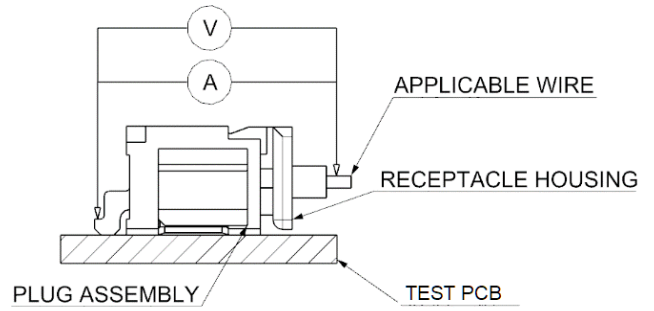
THIS DOCUMENT CONTAINS INFORMATION THAT IS PROPRIETARY TO MOLEX ELECTRONIC TECHNOLOGIES, LLC AND SHOULD NOT BE USED WITHOUT WRITTEN PERMISSION

REVISION DESCRIPTION								<b>PICOBLADE 1.25 SMT TIN PLATING SMART SPEC</b>	
CHANGE NO.	666482								
REVISED BY	MIKEDA01	DATE	2021/06/09	DOC TYPE	DOC TYPE DESCRIPTION		DOC PART	SERIES	
REV APPR BY	KOMURAKAMI	DATE	2021/06/25	PS	PRODUCT SPECIFICATION WORD		000	51021	
INITIAL RELEASE				CUSTOMER		DOCUMENT NUMBER		REVISION	SHEET
INITIAL DRWN	MIKEDA01	DATE	2020/06/25	GENERAL		<b>510211024-PS</b>		<b>B</b>	11 OF 18
INITIAL APPR	AIDA	DATE	2020/08/07						

**8.0 CONTACT RESISTANCE MEASURING POINT**



Vertical type



Right-Angle type

Contact Resistance  
 $m\Omega = V/A$

[PicoBlade Connector System Web Page](#)

[TABLE OF CONTENT](#)



THIS DOCUMENT CONTAINS INFORMATION THAT IS PROPRIETARY TO MOLEX ELECTRONIC TECHNOLOGIES, LLC AND SHOULD NOT BE USED WITHOUT WRITTEN PERMISSION

REVISION DESCRIPTION		<b>PICOBLADE 1.25 SMT TIN PLATING SMART SPEC</b>					
CHANGE NO.	666482						
REVISED BY	MIKEDA01	DATE	2021/06/09	DOC TYPE	DOC TYPE DESCRIPTION	DOC PART	SERIES
REV APPR BY	KOMURAKAMI	DATE	2021/06/25	PS	PRODUCT SPECIFICATION WORD	000	51021
INITIAL RELEASE			CUSTOMER		DOCUMENT NUMBER	REVISION	SHEET
INITIAL DRWN	MIKEDA01	DATE	2020/06/25	GENERAL	<b>510211024-PS</b>	<b>B</b>	12 OF 18
INITIAL APPR	AIDA	DATE	2020/08/07				

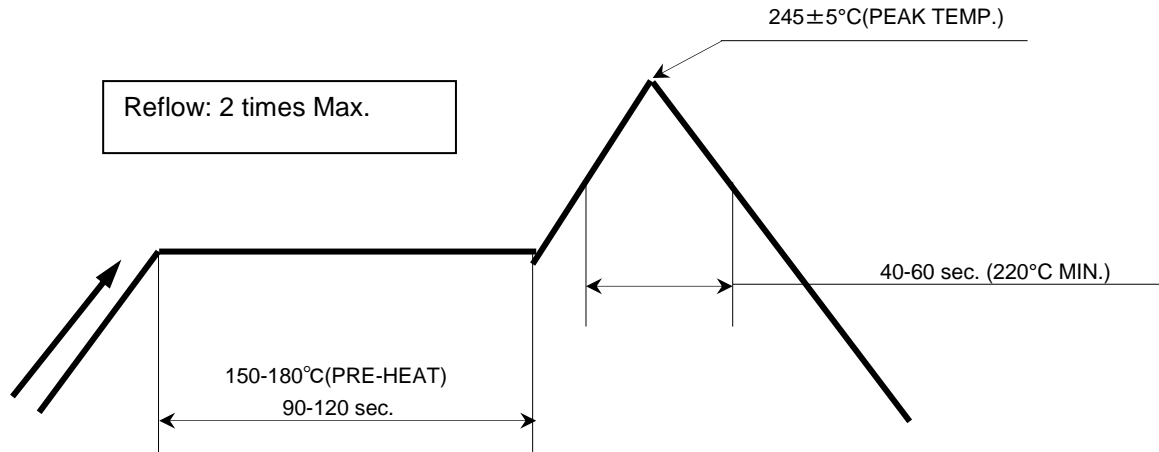
**9.0 SOLDER INFORMATION**

These specifications establish standard solderability test methods used to evaluate a products ability to accept molten solder. Solder Process Temperatures and Reflow Solder Profiles will vary based on application, equipment, solder paste, PCB thickness, etc.

**9.1 SOLDER PROCESS TEMPERATURES**

Reflow Solder Temperature: 245 ± 5 °C Maximum

**9.2 SOLDERING PROFILE**



**TEMPERATURE CONDITION GRAPH**  
(Temperature is measured at the soldering area on the surface of PCB)

**NOTE:** Please check the mount condition (reflow soldering condition) by your own devices beforehand, because the condition changes by the soldering devices, printed circuit boards (PCB), and so on. Although tail of terminal and nail may discolor, a solderability does not have a problem. No moisture treatment before reflow process.

[PicoBlade Connector System Web Page](#)

[TABLE OF CONTENT](#)



THIS DOCUMENT CONTAINS INFORMATION THAT IS PROPRIETARY TO MOLEX ELECTRONIC TECHNOLOGIES, LLC AND SHOULD NOT BE USED WITHOUT WRITTEN PERMISSION

REVISION DESCRIPTION	<b>PICOBLADE 1.25 SMT TIN PLATING SMART SPEC</b>						
CHANGE NO.	666482						
REVISED BY	MIKEDA01	DATE	2021/06/09	DOC TYPE	DOC TYPE DESCRIPTION	DOC PART	SERIES
REV APPR BY	KOMURAKAMI	DATE	2021/06/25	PS	PRODUCT SPECIFICATION WORD	000	51021
INITIAL RELEASE				CUSTOMER	DOCUMENT NUMBER	REVISION	SHEET
INITIAL DRWN	MIKEDA01	DATE	2020/06/25	GENERAL	<b>510211024-PS</b>	<b>B</b>	13 OF 18
INITIAL APPR	AIDA	DATE	2020/08/07				

**10.0 PACKAGING**

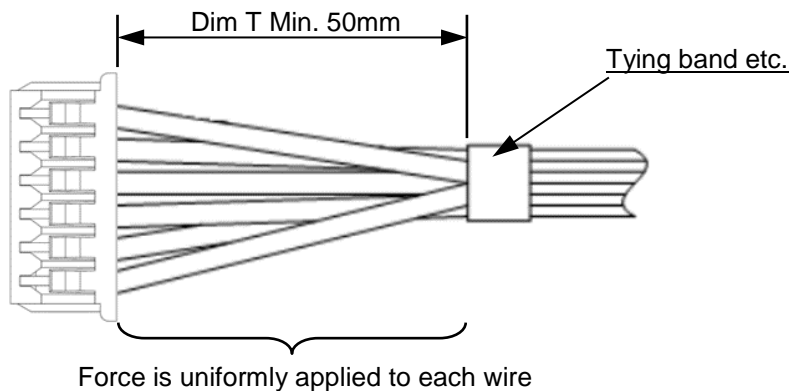
Parts shall be packaging to protect the parts from damage during standard shipping, storage, and handling. Refer Molex.com specific part number webpage to get the exact packaging document for that item.

**11.0 INSTRUCTION UPON USAGE OF CRIMP TERMINAL**

Please refer to AS-56000-001 for usage of crimp terminal.

**12.0 CABLE TIE AND / OR TWIST TIE LOCATION**

CKT Size	Dim T Min.
2-17 ckt	50 mm



The "T" dimension defines a "free" length of wire, or a length of wire that is not subject to significant bias by external factors such as a wire tie, wire twisting, or other means of bending or deforming of the wires that repositions them from their natural relaxed state or location where they enter the housing. Wires are to be dressed in such a manner to allow the terminals to float freely in the pocket. This dimension is general recommendation and may need to be adjusted for different wire gauges and wire type and insulation thickness and insulation material.

[PicoBlade Connector System Web Page](#)

[TABLE OF CONTENT](#)



THIS DOCUMENT CONTAINS INFORMATION THAT IS PROPRIETARY TO MOLEX ELECTRONIC TECHNOLOGIES, LLC AND SHOULD NOT BE USED WITHOUT WRITTEN PERMISSION

REVISION DESCRIPTION	<b>PICOBLADE 1.25 SMT TIN PLATING SMART SPEC</b>						
CHANGE NO.	666482						
REVISED BY	MIKEDA01	DATE	2021/06/09	DOC TYPE	DOC TYPE DESCRIPTION	DOC PART	SERIES
REV APPR BY	KOMURAKAMI	DATE	2021/06/25	PS	PRODUCT SPECIFICATION WORD	000	51021
INITIAL RELEASE				CUSTOMER	DOCUMENT NUMBER	REVISION	SHEET
INITIAL DRWN	MIKEDA01	DATE	2020/06/25	GENERAL	<b>510211024-PS</b>	<b>B</b>	14 OF 18
INITIAL APPR	AIDA	DATE	2020/08/07				

**13.0 NOTE**

1. There is no influence in the product performance though the black spot or bubble etc. might be confirmed to the plastic part of this product and the shade might be different (discoloration by secular distortion etc.).
2. The wound of friction might adhere to externals because the tin plating is used for the tail and nail. But there is no influence in the product performance.
3. A few scratches may be confirmed to the surface of the housing and the plating of this product, however, there is no problem in the product performance.
4. Discoloration of the plastic part of this product can result from exposure to ultraviolet light. There is no problem in the product performance.
5. When this product is used at a place where exposure to water could be expected, please handle with appropriate care to avoid damage from water. There is a possibility of causing insulated malfunction between the circuits.
6. Please do not conduct any washing process on the connectors because it may damage the product's function.
7. Please do not use the connectors in a condition where the wire, PCB, or the contact area is experiencing a sympathetic vibration of wires and PCB, and constant movement of devices. This may cause a defect in the contact due to the contact area being worn down. Therefore, please fix wires and PCB on the chassis, and reduces sympathetic vibration.
8. Please do not do work that the load hangs in the connectors like the carrying of the substrate etc. with the connectors engages. There is a case where it causes the connectors damage etc.
9. After mated the connectors, please do not allow the PCBs to apply pressure on the connectors in either the pitch direction, the span direction or rotational direction. It may cause damage to the connectors and may crack the soldering.
10. Please try to prevent any external forces or shock from being applied to the connectors while the cable assembly is in process, when it is being packaged, or while it is in transportation. This may cause deformation and damage to the connectors and cause a defect in the product's performance.
11. When using this product, please ensure that the specification for rated current per circuit is followed. Do not allow the sum of the current used on several circuits to exceed the maximum allowable current.
12. This product is not designed for the mating and unmating of the connectors to be performed under the condition of an active electrical circuit. It may cause a spark and product defect if the connectors are mated and unmated in this way.
13. Please keep enough clearance between connectors and chassis of your application in order not to apply pressure on the connectors.
14. Please tie the cable at least 50 mm away from the edge of the connectors and try to ensure that the force is applied evenly on all of the wires.

[PicoBlade Connector System Web Page](#)

[TABLE OF CONTENT](#)



THIS DOCUMENT CONTAINS INFORMATION THAT IS PROPRIETARY TO MOLEX ELECTRONIC TECHNOLOGIES, LLC AND SHOULD NOT BE USED WITHOUT WRITTEN PERMISSION

REVISION DESCRIPTION	<b>PICOBLADE 1.25 SMT TIN PLATING SMART SPEC</b>								
CHANGE NO.	666482								
REVISED BY	MIKEDA01	DATE	2021/06/09	DOC TYPE	DOC TYPE DESCRIPTION		DOC PART	SERIES	
REV APPR BY	KOMURAKAMI	DATE	2021/06/25	PS	PRODUCT SPECIFICATION WORD		000	51021	
INITIAL RELEASE				CUSTOMER		DOCUMENT NUMBER		REVISION	SHEET
INITIAL DRWN	MIKEDA01	DATE	2020/06/25	GENERAL		<b>510211024-PS</b>		<b>B</b>	15 OF 18
INITIAL APPR	AIDA	DATE	2020/08/07						



15. When extracting a crimp terminal from the housing using a jig, it may deform the housing lance and therefore reduce the terminal retention force enormously after re-inserting of the terminal. Therefore, please ensure to use a new housing after repairing the crimp terminals.
16. The cable assembly should not have a constant stress or pulling force applied on it. This phenomenon may damage the contact area or wiring area (crimping). Therefore, when designing the wire positioning, please ensure that there is enough length of wire to avoid stress on the connectors. Please refer to 510210000-AS for bundling of harness.
17. Do not deform the movable part as lock part and lance part of Plug. HS'G and terminals on purpose. It would lead to product failure.
18. If you leave any soldering area on this product open, there may be the possibility of a missing terminal short circuiting between pins, terminal buckling or the potential for the connectors to come off of the PCB. Therefore, please solder all of the terminals on the PCB.
19. If there is accidental contact with the connectors while it is going through the reflow machine, there may be deformation or damage caused to the connectors. Please check to prevent this.
20. Please do not touch the terminals before or after mounted the connectors onto the PCB.
21. Please do not stack the PCB directly after mounted the connectors on it.
22. Please conduct it under the condition of the specifications when repairing by hand soldering iron after mounting. In the case of practicing beyond the condition, the backlash, the change in the contact gap, the deformation of the mold and the melting, etc. may cause damage.
23. When conducting manual repairs using a soldering iron, please do not use more solder and flux than needed. This may cause solder wicking and flux wicking issues, and it will eventually cause a contact defect and functional issues.
24. Please do not use the connectors alone to provide mechanical support for the PCB. Please ensure that there is a fixed structure on the phone chassis or other component support for the PCB.
25. In the case of changing our recommended board pattern size and designing, please consult in advance because it may cause a fatal defect.
26. It is necessary to consult separately when mount product on a special PCB or FPC.
27. The applicable wire for this connector, in principle, is tin-plated copper stranded wire. Please consult us and evaluate it in advance when using other wires.
28. Please hold wires all together lightly. please withdraw receptacle housing slowly, axially and straightly. Please avoid withdrawing them with an angle and roughly. That might cause damage to connector.
29. Please investigate the mounting condition (reflow soldering condition) on your own devices beforehand. The mounting conditions may change due to the soldering temperature, soldering paste, IR reflow machine, Nitrogen reflow machine, and the type of PCB. The different mounting conditions may have an influence on the product's performance.
30. The mounting specification for coplanarity does not include the influence of warpage of the PCB. The warpage of the PCB should be a maximum of 0.02 mm if measuring from one connector edge to the other.

[PicoBlade Connector System Web Page](#)

[TABLE OF CONTENT](#)

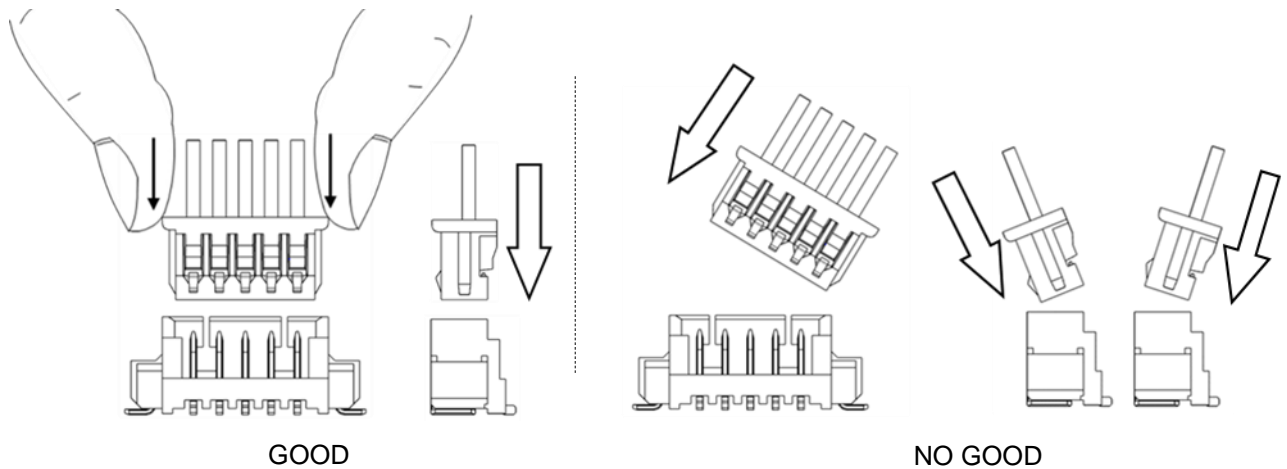


THIS DOCUMENT CONTAINS INFORMATION THAT IS PROPRIETARY TO MOLEX ELECTRONIC TECHNOLOGIES, LLC AND SHOULD NOT BE USED WITHOUT WRITTEN PERMISSION

REVISION DESCRIPTION	<b>PICOBLADE 1.25 SMT TIN PLATING SMART SPEC</b>						
CHANGE NO.	666482						
REVISED BY	MIKEDA01	DATE	2021/06/09	DOC TYPE	DOC TYPE DESCRIPTION	DOC PART	SERIES
REV APPR BY	KOMURAKAMI	DATE	2021/06/25	PS	PRODUCT SPECIFICATION WORD	000	51021
INITIAL RELEASE				CUSTOMER	DOCUMENT NUMBER	REVISION	SHEET
INITIAL DRWN	MIKEDA01	DATE	2020/06/25	GENERAL	<b>510211024-PS</b>	<b>B</b>	16 OF 18
INITIAL APPR	AIDA	DATE	2020/08/07				



- 31. The housing material of this product is made from a high heat resistant polyamide. The soldering condition and the water absorption properties of the housing material may cause blistering on the housing surface. Because this blister is not caused by property change, it does not damage the product's features.
- 32. Because of property of HS'G resin, blister might be generated during reflow heating by hygroscopicity. When the storage condition after opening the humidity prevention package of product is over recommended storage condition, baking is recommended with below condition. Baking condition: Put in 50°C temperature chamber for 10 hours.
- 33. Because the receptacle housing material of this product is using polyamide, the water absorption status of the housing material might change insertion force, withdrawal force, or the feeling of insertion. Its excessive water absorption may cause to interfere with insertion a little bit or to weaken the click feeling of the lock when mating. However, it does not damage the product's features and functions.
- 34. Please do the mating as much as possible to along to mating axis. At this time, positioning each side of external faces of receptacle housing and plug and push to mating until both connectors strikes each other (complete mating position).



- 35. Coplanarity is assured only before mounting. There is no guarantee of coplanarity after mounting and in the reflow.

[PicoBlade Connector System Web Page](#)

[TABLE OF CONTENT](#)



THIS DOCUMENT CONTAINS INFORMATION THAT IS PROPRIETARY TO MOLEX ELECTRONIC TECHNOLOGIES, LLC AND SHOULD NOT BE USED WITHOUT WRITTEN PERMISSION

REVISION DESCRIPTION		<b>PICOBLADE 1.25 SMT TIN PLATING SMART SPEC</b>					
CHANGE NO.	666482						
REVISED BY	MIKEDA01	DATE	2021/06/09	DOC TYPE	DOC TYPE DESCRIPTION	DOC PART	SERIES
REV APPR BY	KOMURAKAMI	DATE	2021/06/25	PS	PRODUCT SPECIFICATION WORD	000	51021
INITIAL RELEASE			CUSTOMER		DOCUMENT NUMBER	REVISION	SHEET
INITIAL DRWN	MIKEDA01	DATE	2020/06/25	GENERAL	<b>510211024-PS</b>	<b>B</b>	17 OF 18
INITIAL APPR	AIDA	DATE	2020/08/07				

- 36. There is no influence in the product performance though the twist might be generated in the terminal plating part according to the reflow condition.
- 37. There is no influence in the product performance though discoloration might be generated in the resin according to the reflow condition.
- 38. Although there might be some discoloration seen on the soldering tail after reflow, this will not influence the product's performance.

**14.0 INSTRUCTION UPON USAGE**

Please use it promptly after opening a packaging. The recommendation is within at 48 hours.

[PicoBlade Connector System Web Page](#)

[TABLE OF CONTENT](#)



THIS DOCUMENT CONTAINS INFORMATION THAT IS PROPRIETARY TO MOLEX ELECTRONIC TECHNOLOGIES, LLC AND SHOULD NOT BE USED WITHOUT WRITTEN PERMISSION

REVISION DESCRIPTION	<b>PICOBLADE 1.25 SMT TIN PLATING SMART SPEC</b>								
CHANGE NO.	666482								
REVISED BY	MIKEDA01	DATE	2021/06/09	DOC TYPE	DOC TYPE DESCRIPTION		DOC PART	SERIES	
REV APPR BY	KOMURAKAMI	DATE	2021/06/25	PS	PRODUCT SPECIFICATION WORD		000	51021	
INITIAL RELEASE				CUSTOMER		DOCUMENT NUMBER		REVISION	SHEET
INITIAL DRWN	MIKEDA01	DATE	2020/06/25	GENERAL		<b>510211024-PS</b>		<b>B</b>	18 OF 18
INITIAL APPR	AIDA	DATE	2020/08/07						