

Features

- *Measuring range 150 mm*
- *5 kOhm resistance*
- *100 million movements life*
- *<0.01 mm repatability*
- *Infinite resolution*
- *$\pm 0.1\%$ FS linearity*

RS PRO Motion Control Sensors

RS Stock No.: 0359000

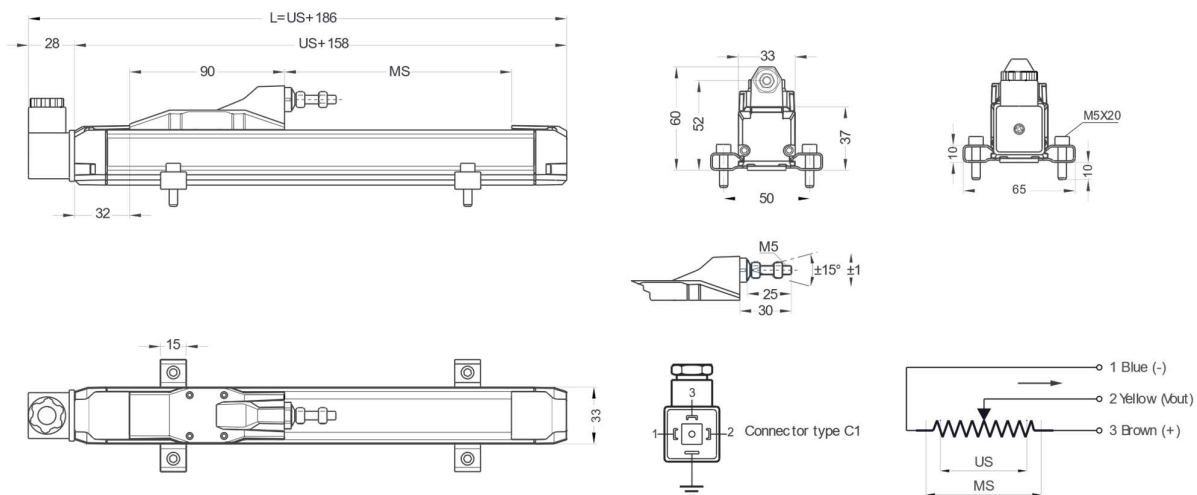


RS Professionally Approved Products bring to you professional quality parts across all product categories. Our product range has been tested by engineers and provides a comparable quality to the leading brands without paying a premium price.

Product Description

This product is designed as compact, high robust, accurate linear position sensor, using potentiometric technology, up to 150 mm measuring length. It provides absolute linear position feedback for wide range of industrial applications.

Mechanical Specifications



General Specifications

Encoder Technology	Linear Potentiometer
Measurement stroke	150 mm
Output Signal Type	Voltage divider
Linearity	$\pm 0.1\%$ FS
Repeatability	< 0.01 mm
Resolution	Infinite
Resistance	5 kOhm
Resistance tolerance	$\pm 20\%$
Load resistance	100 kOhm min.
Recommended wiper current	<1 μ A
Permissible applied voltage	28 VDC max.
Electrical connections	4 pin connector
Displacement speed	<1.5 m/s
Mechanical life	100 million movements
Case dimensions	33 mm x 33 mm
Case material	Anodized aluminium
Mechanical fixing	Variable brackets
Protection level	IP 40 / upside down IP 53
Operating temperature	-20°C ... +80°C
Storage temperature	-30°C ... +90°C

Approvals

Declarations	CE, UKCA, ROHS, REACH
--------------	-----------------------

Similar Products

RS PRO Part Number	Stroke	Output Signal Type	Linearity (%)	Resistance (kOhm)	Connector / Cable
0359001	400mm	Voltage Divider	± 0.05 FS	5K	C1 & 1 meter cable