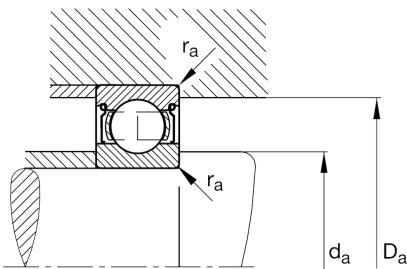
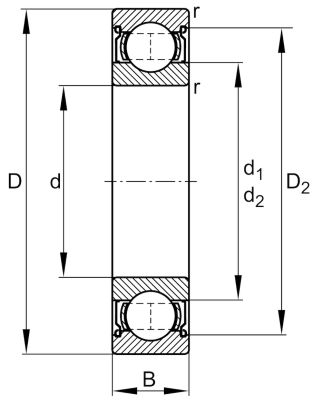


**FAG****625-2Z**

Deep groove ball bearing

Schaeffler ID:
0383909140000Deep groove ball bearing 62...-2Z, single
row, shields, steel sheet metal cage

Technical information

**Main Dimensions & Performance Data**

d	5 mm	Bore diameter
D	16 mm	Outside diameter
B	5 mm	Width
C_r	1.735 N	Basic dynamic load rating, radial
C_{0r}	671 N	Basic static load rating, radial
C_{ur}	23 N	Fatigue load limit, radial
n_G	53.000 1/min	Limiting speed
n_{gr}	36.000 1/min	Reference speed
	0,005 kg	Weight

Mounting dimensions

$d_{a \min}$	7,4 mm	Minimum diameter shaft shoulder
$D_{a \max}$	13,6 mm	Maximum diameter of housing shoulder
$r_{a \max}$	0,3 mm	Maximum fillet radius

Dimensions

r_{\min}	0,3 mm	Minimum chamfer dimension
D_2	13,8 mm	Caliber diameter outer ring
d_2	7,5 mm	Caliber diameter inner ring

Temperature range

T_{\min}	-30 °C	Operating temperature min.
T_{\max}	120 °C	Operating temperature max.

Calculation factors

f_0	12,4	Calculation factor
-------	------	--------------------