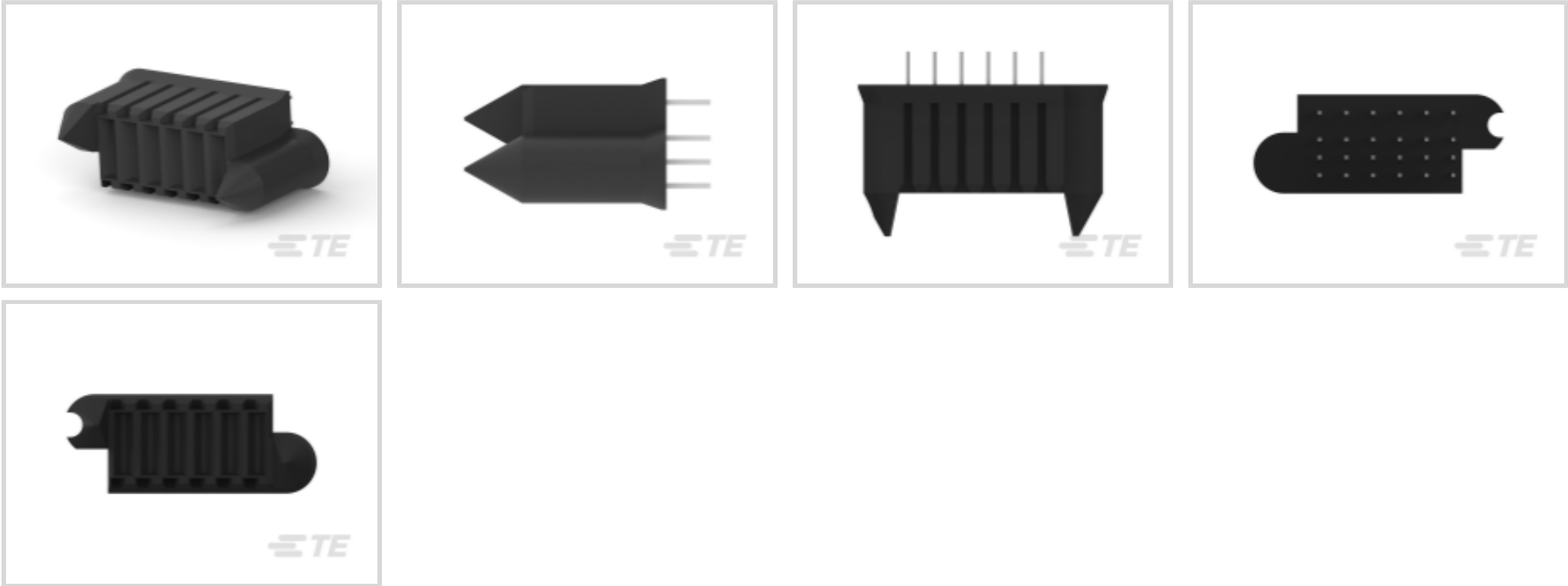




Connectors > PCB Connectors > PCB Headers & Receptacles



PCB Connector Type: **PCB Mount Receptacle**

PCB Mount Orientation: **Vertical**

Connector System: **Wire-to-Board**

Number of Positions: **6**

Number of Rows: **1**

Features

Product Type Features

Connector Shape	Rectangular
PCB Connector Type	PCB Mount Receptacle
Connector System	Wire-to-Board
Header Type	Fully Shrouded
Sealable	No
Connector & Contact Terminates To	Printed Circuit Board
Connector Product Type	Connector Assembly

Configuration Features

Number of Columns	6
Mating & Unmating Configuration	Hot Pluggable
Number of Power Positions	6
PCB Mount Orientation	Vertical
Number of Positions	6
Number of Rows	1

Electrical Characteristics



Operating Voltage	300 VDC
-------------------	---------

Body Features

Primary Product Color	Black
-----------------------	-------

Contact Features

Contact Underplating Material	Nickel
Contact Underplating Material Thickness	1.27 µm[50 µin]
Contact Mating Area Plating Material Thickness	1.27 µm[50 µin]
Contact Shape & Form	Tuning Fork
PCB Contact Termination Area Plating Material Thickness	.5 – 1.25 µm[19.68 – 49.21 µin]
Contact Layout	Inline
Contact Base Material	Copper Alloy
PCB Contact Termination Area Plating Material	Tin
Contact Mating Area Plating Material	Gold (Au)
Contact Type	Receptacle
Contact Current Rating (Max)	15 A

Termination Features

Termination Post & Tail Length	3.7 mm[.145 in]
Termination Method to PCB	Through Hole - Press-Fit

Mechanical Attachment

Panel Mount Feature	Without
Mating Retention	Without
Mating Alignment Type	Guide Post, Keyed, Polarization
PCB Mount Alignment Type	Action/Compliant Tail
PCB Mount Retention	Without
PCB Mount Alignment	With
Connector Mounting Type	Board Mount
Mating Alignment	With

Housing Features

Housing Material	High Temperature Thermoplastic
Centerline (Pitch)	3 mm[.118 in]

Dimensions

Connector Width	11.08 mm[.43 in]
-----------------	------------------



PCB Thickness (Recommended)	2.13 mm[.083 in]
Connector Height	17 mm[.67 in]
Connector Length	28.04 mm[1.103 in]

Usage Conditions

Operating Temperature (Max)	125 °C[257 °F]
Operating Temperature Range	-55 – 125 °C[-67 – 257 °F]

Operation/Application

Circuit Application	Power
---------------------	-------

Industry Standards

Glow Wire Rating	Standard Part - Not Glow Wire
UL Flammability Rating	UL 94V-0

Packaging Features

Packaging Quantity	45
Packaging Method	Tray

Product Compliance

For compliance documentation, visit the product page on TE.com>

EU RoHS Directive 2011/65/EU	Compliant
EU ELV Directive 2000/53/EC	Compliant
China RoHS 2 Directive MIIT Order No 32, 2016	No Restricted Materials Above Threshold
EU REACH Regulation (EC) No. 1907/2006	Current ECHA Candidate List: JAN 2025 (247) Candidate List Declared Against: JAN 2025 (247) Does not contain REACH SVHC
Halogen Content	Not Low Halogen - contains Br or Cl > 900 ppm.
Solder Process Capability	Wave solder capable to 265°C

Product Compliance Disclaimer

This information is provided based on reasonable inquiry of our suppliers and represents our current actual knowledge based on the information they provided. This information is subject to change. The part numbers that TE has identified as EU RoHS compliant have a maximum concentration of 0.1% by weight in homogenous materials for lead, hexavalent chromium, mercury, PBB, PBDE, DBP, BBP, DEHP, DIBP, and 0.01% for cadmium, or qualify for an exemption to these limits as defined in the Annexes of Directive 2011/65/EU (RoHS2). Finished electrical and electronic equipment products will be CE marked as required by Directive 2011/65/EU. Components may not be CE marked. Additionally, the part numbers that TE has identified as EU ELV compliant have a maximum concentration of 0.1% by weight in homogenous materials for lead, hexavalent chromium, and mercury, and 0.01% for cadmium, or qualify for an exemption to these limits as defined in the Annexes of Directive 2000/53/EC (ELV). Regarding the REACH Regulation, the information TE provides



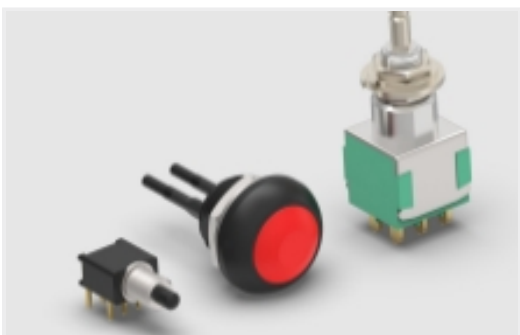
on SVHC in articles for this part number is based on the latest European Chemicals Agency (ECHA) ‘Guidance on requirements for substances in articles’ posted at this URL: <https://echa.europa.eu/guidance-documents/guidance-on-reach>

Compatible Parts

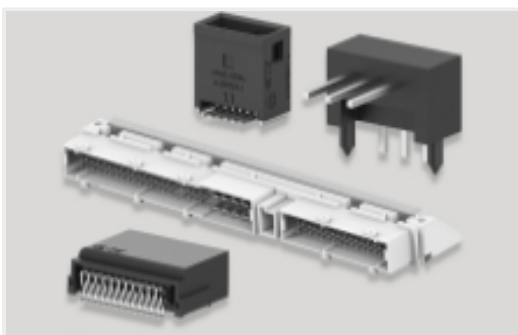


TE Part # 1489127-4
HDR HSG 6 CONTS BLKHD CONN

Also in the Series | Alcoswitch MPE



General Purpose Push Button Switches
(4)



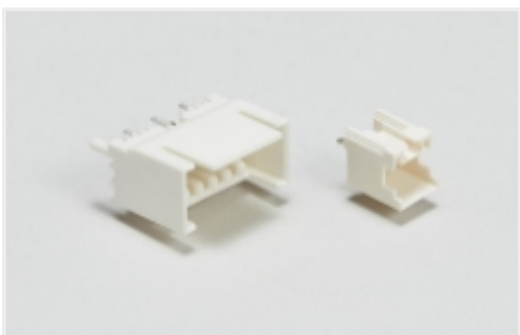
PCB Headers & Receptacles(1)



Push Button Switches(4)



Rectangular Power Connectors(1)

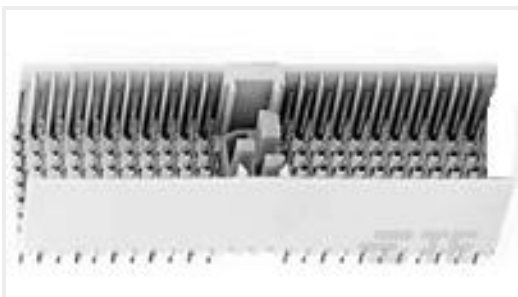


Wire-to-Board Headers & Receptacles
(1)

Customers Also Bought



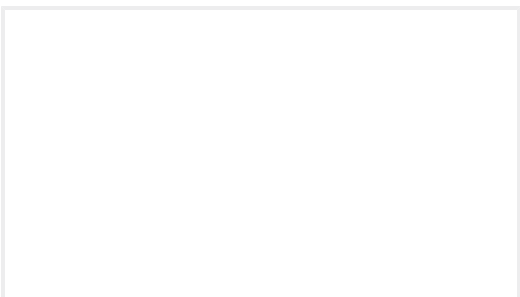
TE Part #5223957-1
UPM GUIDE MODULE



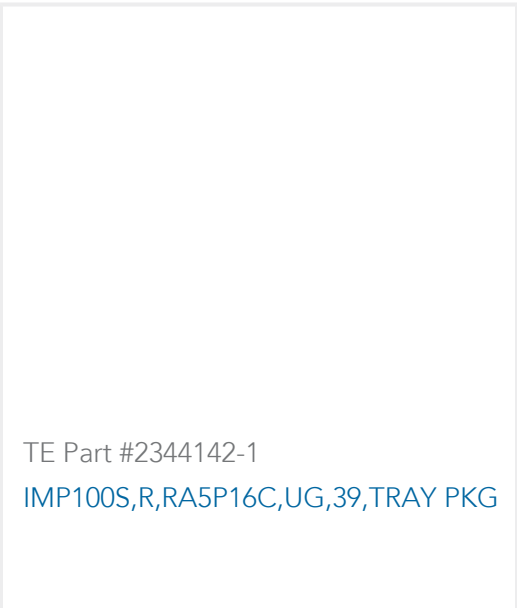
TE Part #5188398-9
2MMHM,HDR,TYPE A,LUBE



TE Part #1551920-2
zQSFP+ connector assembly



TE Part #1-2344141-1
IMP100S,R,RA5P16C,LG,39,TRAY PKG



TE Part #2344142-1
[IMP100S,R,RA5P16C,UG,39,TRAY PKG](#)

Documents

Product Drawings

[RECPT ASSY MPD 6 POS HI PWR](#)

English

CAD Files

[3D PDF](#)

3D

Customer View Model

[ENG_CVM_CVM_1-1489715-4_C.2d_dxf.zip](#)

English

Customer View Model

[ENG_CVM_CVM_1-1489715-4_C.3d_igs.zip](#)

English

Customer View Model

[ENG_CVM_CVM_1-1489715-4_C.3d_stp.zip](#)

English

By downloading the CAD file I accept and agree to the [Terms and Conditions](#) of use.

Datasheets & Catalog Pages

[POWER_CONNECTORS_CATALOG_SEC02_CABLE_MOUNTED](#)

English

Product Specifications

[Application Specification](#)

English

[Application Specification](#)

English