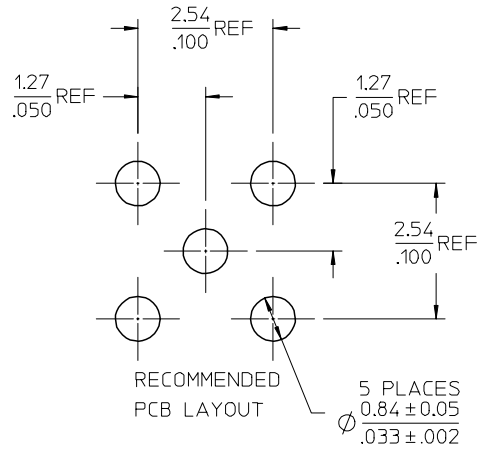
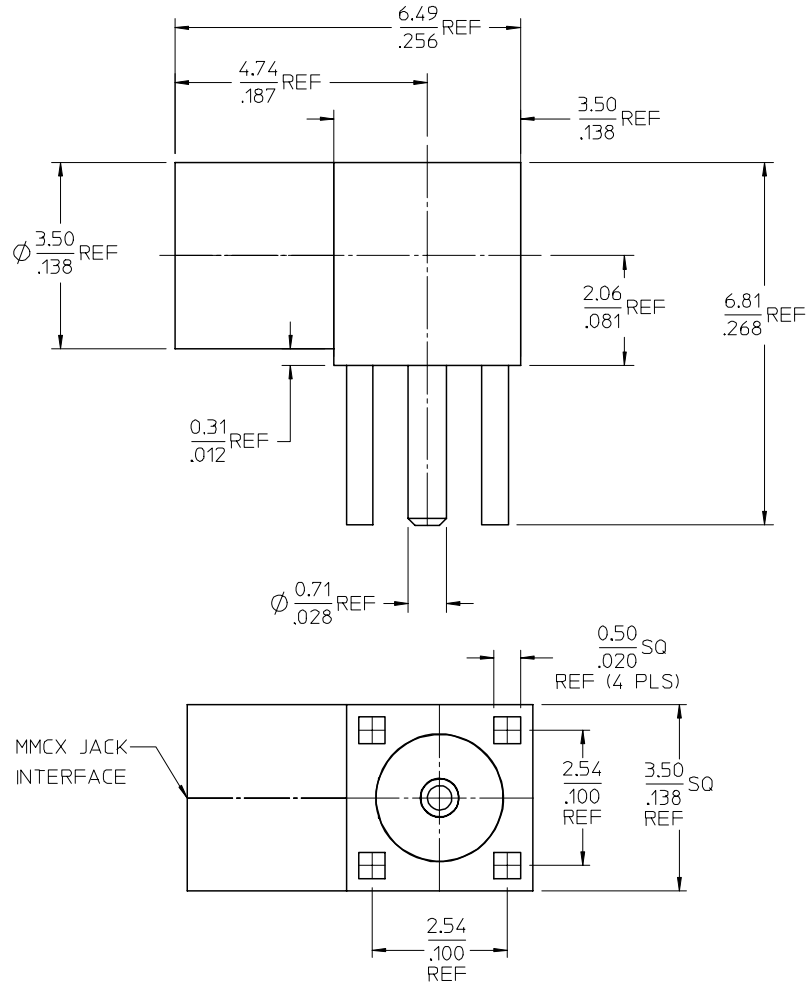
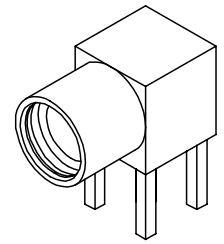


MATERIALS AND FINISHES

BODY BRASS  
PLATED GOLD

CENTER CONTACT BERYLLIUM COPPER  
PLATED GOLD

INSULATOR TEFLON



MMCX JACK  
INTERFACE

ES-73599-0000-016	INTERFACE
SPECIFICATION	DESCRIPTION

73415-1002	P/N 73415-1001, ONE PER BAG
73415-1001	PER COMMERCIAL REQUIREMENTS, BULK
73415-1000	PER MILITARY REQUIREMENTS, BULK
PART NUMBER	PLATING AND PACKAGING

CHG: ADDED P/N  
73415-1002

EC NO: URF 2007-0264

DRWN: IFLAHERY 2007/01/09

CHKD: SHAH 2007/01/09

APPR: JIMENER 2007/01/09

REV DESCRIPTION

D1

QUALITY SYMBOLS

$\nabla=0$

$\nabla=0$

GENERAL TOLERANCES (UNLESS SPECIFIED)	
mm	INCH
4 PLACES ± ---	± ---
3 PLACES ± ---	± ---
2 PLACES ± ---	± ---
1 PLACE ± ---	± ---
ANGULAR ± 2 °	

DIMENSION STYLE	
MM/IN	
DRAWN BY	DATE
JM	2005/07/22
CHECKED BY	DATE
JM	2005/07/22
APPROVED BY	DATE
JDW	2005/07/22

SCALE DESIGN UNITS METRIC

THIRD ANGLE PROJECTION

MMCX JACK, R/A, PCB  
50 OHMS  
MMCX-J/PCB

**molex** MOLEX INCORPORATED

MATERIAL NO. DOCUMENT NO. SHEET NO.

SEE TABLE SD-73415-100 1 OF 1

DRAFT WHERE APPLICABLE MUST REMAIN WITHIN DIMENSIONS

THIS DRAWING CONTAINS INFORMATION THAT IS PROPRIETARY TO MOLEX INCORPORATED AND SHOULD NOT BE USED WITHOUT WRITTEN PERMISSION