

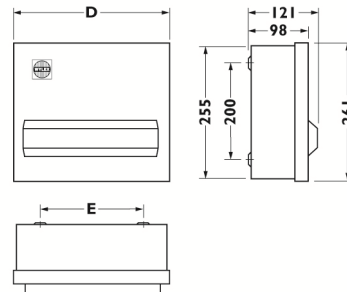


DATA SHEET

15 WAY METAL HI INTEGRITY CONSUMER UNIT

Catalogue Reference:- NMRS15SSLMHI

Current Rating	100A						
Operating Voltage	240Volts +10/-6%						
Short Circuit Rating	16kA when protected by a 100A HRC fuse to BS1361						
Insulation Voltage	500Volts AC						
IP Rating	IP2XC						
Consumer Unit	BSEN 61439-3						
Main Switch	BSEN 60947-3						
RCD Incomer	BSEN 61008						
Colour	RAL 9010						
Box Material	Steel						
Lid Material (including visor)	Steel						
Outgoing Terminal Size Neutral Bar	Maximum cable Size 16mm ²						
Outgoing Terminal Size Earth Bar	Maximum cable Size 16mm ²						
Incoming Terminal Size Neutral Bar	Maximum cable Size 16mm ²						
Incoming Terminal Size Earth Bar	Maximum cable Size 16mm ²						
Incoming Switch Disconnecter Size	Maximum cable size Main Switch 50mm ² , RCD 35mm ²						
Dimensions	<table style="width: 100%; border: none;"> <tr> <td style="text-align: center;">Width</td> <td style="text-align: center;">Fixings</td> </tr> <tr> <td style="text-align: center;">D</td> <td style="text-align: center;">E</td> </tr> <tr> <td style="text-align: center;">438mm</td> <td style="text-align: center;">356mm</td> </tr> </table>	Width	Fixings	D	E	438mm	356mm
Width	Fixings						
D	E						
438mm	356mm						



Replacement Incoming devices

- **WS102** (main switch)
- **WRS80/2** (80A 30mA RCD)
- **WRS100/2** (100A 30mA RCD)
- **WRM100/2** (100A 100mA RCD)

Replacement Spare Items

- **B4471/SPARE** (user operating instructions)
- **NHLABELPACK** (Full Kit of Labels)
- **B4585/SPARE** (12 pin replacement bus bar)
- **NM21/MCLA** (complete lid assembly)

Compatible Circuit Protection Devices:			
MCBs		RCBOs	
6kA B curve (3-5In)	6kA C curve (5-10In)	6kA B curve (3-5In)	6kA C curve (5-10In)
NHXB06	NHXC06	NHXSBS1B06	NHXSBS1C06
NHXB10	NHXC10	NHXSBS1B10	NHXSBS1C10
NHXB16	NHXC16	NHXSBS1B16	NHXSBS1C16
NHXB20	NHXC20	NHXSBS1B20	NHXSBS1C20
NHXB32	NHXC32	NHXSBS1B32	NHXSBS1C32
NHXB40	NHXC40	NHXSBS1B40	NHXSBS1C40
NHXB50	NHXC50	NHXSBS1B50	NHXSBS1C50