

HC-HS-06-I-PT-F - Contact insert



1031080

<https://www.phoenixcontact.com/in/products/1031080>

Please be informed that the data shown in this PDF document is generated from our online catalog. Please find the complete data in the user documentation. Our general terms of use for downloads are valid.



Contact insert, number of positions: 6+PE, size: B16, power contacts: 6, control contacts: 0, number of connections per position: 1, Socket, Push-in connection, 400 V, 35 A, 1.5 mm² ... 6 mm², application: Power

Your advantages

- Easy installation without tools, even when mounted, with push-in connection technology
- Shortest installation time compared to other connection technologies
- Quick and effortless wiring, in particular when space is tight
- Automatic cabling with robots possible
- Safe wiring and operation with color-coded actuators
- Shock and vibration-resistant in accordance with DIN EN 61373
- Cost-effective and fast coding with plastic profiles

Commercial data

Item number	1031080
Packing unit	1 pc
Minimum order quantity	1 pc
Sales key	BF7
Product key	AF7ABI
GTIN	4055626534626
Weight per piece (including packing)	103.8 g
Weight per piece (excluding packing)	103.8 g
Customs tariff number	85366990
Country of origin	CN

HC-HS-06-I-PT-F - Contact insert

1031080

<https://www.phoenixcontact.com/in/products/1031080>



Technical data

Notes

General	for flexible conductors with or without ferrules
General	Connectors may be operated only when there is no load/voltage.

Mounting

Assembly note	To ensure correct use, installation in housing with IP54 protection or better is required
---------------	---

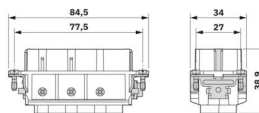
Product properties

Product type	Contact insert with a fixed no. of positions
Series	HC-HS
Application	Power
Type	B16
Number of positions	6
Connection profile	6+PE
Contact numbering	1 - 6
Number of connections per position	1
No. of power contacts	6
No. of control contacts	0
Contact material type	turned

Insulation characteristics

Overvoltage category	III
Degree of pollution	3

Dimensions

Dimensional drawing	
Width	34 mm
Height	32.5 mm
Length	84.5 mm
Drill hole distance, horizontal	77.5 mm

Mechanical characteristics

Contact diameter	3.5 mm
------------------	--------

Connection data

Connection technology

Connection technology	Push-in connection
Number of connections per position	1

HC-HS-06-I-PT-F - Contact insert

1031080

<https://www.phoenixcontact.com/in/products/1031080>



Connection in acc. with standard	IEC / EN
----------------------------------	----------

Conductor connection

Conductor cross section	1.5 mm ² ... 6 mm ² (power contacts)
Connection cross section AWG	16 ... 10
Tightening torque	0.8 Nm ... 1.2 Nm (PE connection) 0.5 Nm ... 0.8 Nm (Mounting screws for mounting in the HEAVYCON housing)
Stripping length of the individual wire	12 mm

Electrical properties

Rated voltage (III/3)	400 V (Conductor-PE) 690 V (Conductor-Conductor)
Rated voltage for power contacts	400/690 V
Rated surge voltage	6 kV (power contacts)
Rated current	35 A (power contacts)

Mechanical properties

Mechanical data

Insertion/withdrawal cycles	≥ 500
-----------------------------	-------

Material specifications

Flammability rating according to UL 94	V0
Contact material	Copper alloy
Contact surface material	Ag/Sn (tarnish protection)
Contact carrier material	PC
Standards/regulations	PC: Fire protection in rail vehicles - requirement sets R22, R23, and R24 acc. to DIN EN 45545-2 (Risk level HL1 - HL3)

Environmental and real-life conditions

Ambient conditions

Degree of protection	IP20
Ambient temperature (operation)	-40 °C ... 125 °C (including heating up of contacts)

Standards and regulations

Testing

Standards/regulations	PC: Fire protection in rail vehicles - requirement sets R22, R23, and R24 acc. to DIN EN 45545-2 (Risk level HL1 - HL3)
-----------------------	---

HC-HS-06-I-PT-F - Contact insert

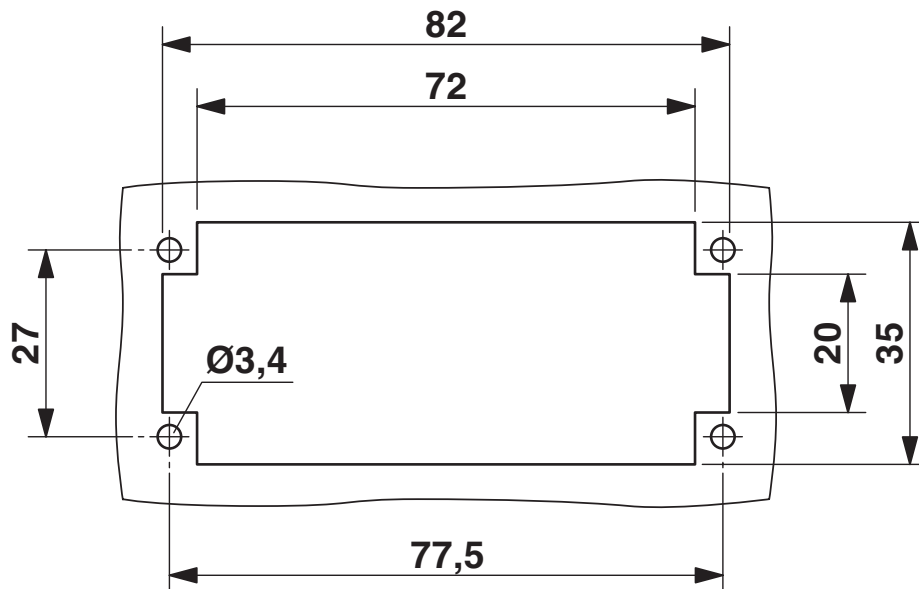
1031080

<https://www.phoenixcontact.com/in/products/1031080>



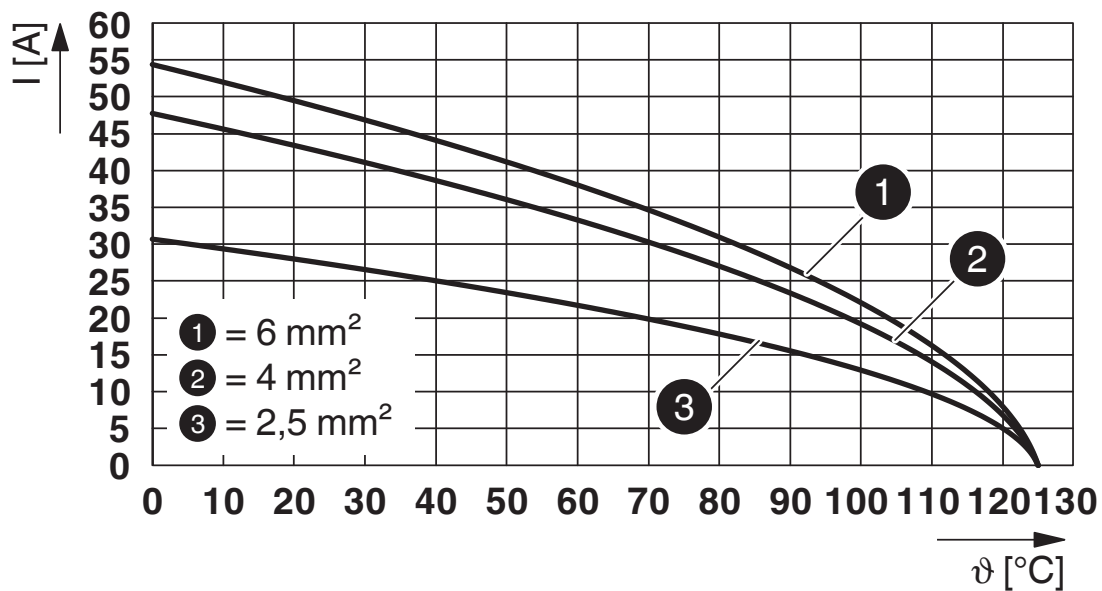
Drawings

Dimensional drawing



Mounting cutout when used without housing

Diagram



Derating diagram

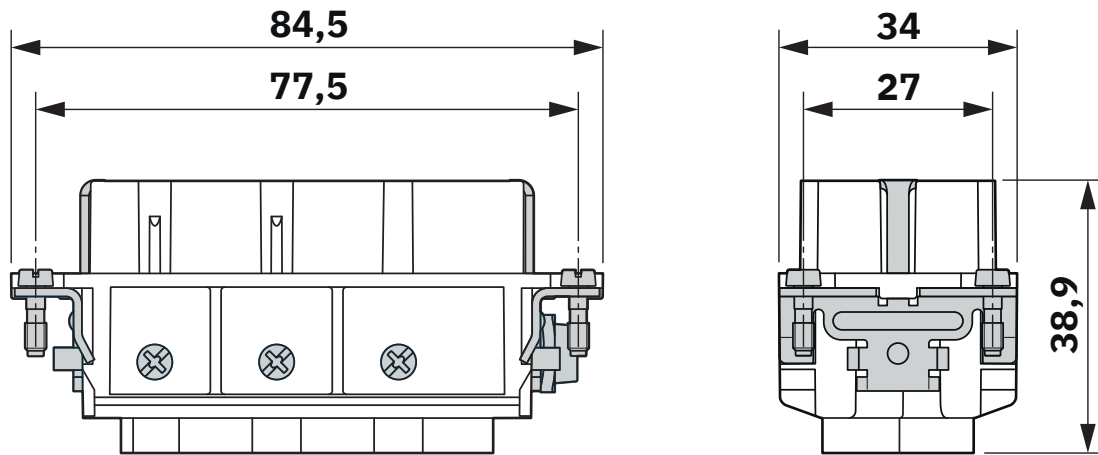
HC-HS-06-I-PT-F - Contact insert



1031080

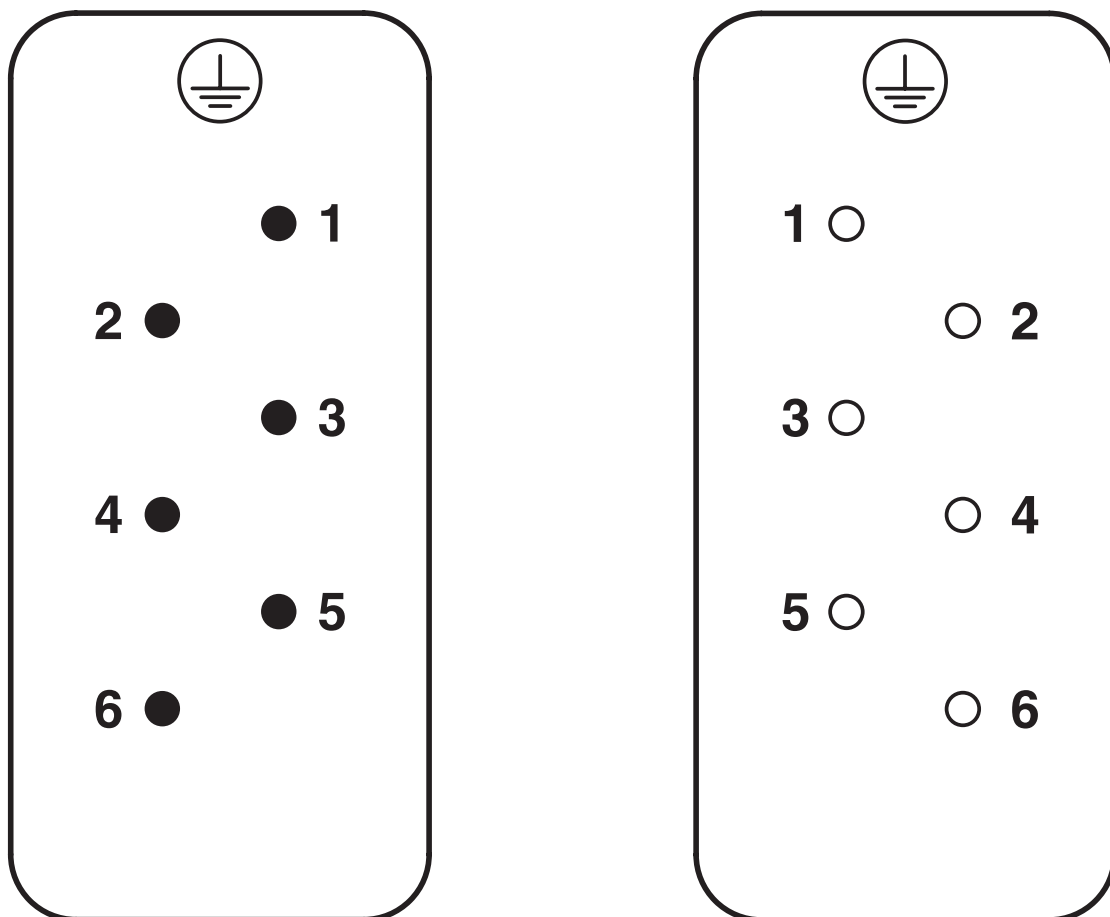
<https://www.phoenixcontact.com/in/products/1031080>

Dimensional drawing



Dimensional drawing

Schematic diagram



Connector pin assignment, connection side

HC-HS-06-I-PT-F - Contact insert


1031080

<https://www.phoenixcontact.com/in/products/1031080>



Approvals

To download certificates, visit the product detail page: <https://www.phoenixcontact.com/in/products/1031080>

	cULus Recognized Approval ID: E468743			
	Nominal voltage U_N	Nominal current I_N	Cross section AWG	Cross section mm^2
	600 V	30 A	- 10	-

HC-HS-06-I-PT-F - Contact insert



1031080

<https://www.phoenixcontact.com/in/products/1031080>

Classifications

ECLASS

ECLASS-11.0	27440205
ECLASS-12.0	27440205
ECLASS-13.0	27440205

ETIM

ETIM 9.0	EC000438
----------	----------

UNSPSC

UNSPSC 21.0	39121500
-------------	----------

HC-HS-06-I-PT-F - Contact insert



1031080

<https://www.phoenixcontact.com/in/products/1031080>

Environmental product compliance

EU RoHS	
Fulfills EU RoHS substance requirements	Yes, No exemptions
China RoHS	
Environment friendly use period (EFUP)	EFUP-E
	No hazardous substances above the limits
EU REACH SVHC	
REACH candidate substance (CAS No.)	No substance above 0.1 wt%

HC-HS-06-I-PT-F - Contact insert

1031080

<https://www.phoenixcontact.com/in/products/1031080>



Accessories

CP-HC - Coding profile

1686478

<https://www.phoenixcontact.com/in/products/1686478>



Coding profile, 4 coding profiles per strip, for insertion in coding keyways

HC-CB - Coding bolt

1772722

<https://www.phoenixcontact.com/in/products/1772722>



Coding pin, prevents mismating of up to six connectors with an identical number of positions

HC-HS-06-I-PT-F - Contact insert

1031080

<https://www.phoenixcontact.com/in/products/1031080>



HC-CST - Coding element

1676857

<https://www.phoenixcontact.com/in/products/1676857>



Coding peg for coding up to 16 connectors

HC-CBU - Coding element

1676860

<https://www.phoenixcontact.com/in/products/1676860>



Coding socket for coding up to 16 connectors

HC-HS-06-I-PT-F - Contact insert

1031080

<https://www.phoenixcontact.com/in/products/1031080>



HC-B-PE-PT - Adapter

1054672

<https://www.phoenixcontact.com/in/products/1054672>

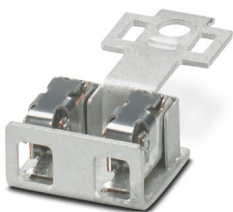


PE adapter with PT connection, for 1 PE connection, for HC-B/HC-BB/HC-DD/HC-D40/HC-D64/HC-HV/HC-BBB, and HC-K contact inserts

HC-B-2PE-PT - PE multiplier

1054675

<https://www.phoenixcontact.com/in/products/1054675>



PE adapter with PT connection, for 2 PE connections, for HC-B/HC-BB/HC-DD/HC-D40/HC-D64/HC-HV/HC-BBB, and HC-K contact inserts

HC-HS-06-I-PT-F - Contact insert

1031080

<https://www.phoenixcontact.com/in/products/1031080>



HC-B-PES - Screw

1604997

<https://www.phoenixcontact.com/in/products/1604997>

PE screw, for contact inserts HC-B / HC-BB / HC-DD / HC-D40 / HC-D64



HC-HS-PES - Screw

1586219

<https://www.phoenixcontact.com/in/products/1586219>

PE screw, for HC-HS contact inserts



HC-HS-06-I-PT-F - Contact insert

1031080

<https://www.phoenixcontact.com/in/products/1031080>



HC-HS-06-I-PT-M - Contact insert

1031082

<https://www.phoenixcontact.com/in/products/1031082>



Contact insert, number of positions: 6+PE, size: B16, power contacts: 6, control contacts: 0, number of connections per position: 1, Pin, Push-in connection, 400 V, 35 A, 1.5 mm² ... 6 mm², application: Power

CF CRIMPHANDY 0,5 - Crimping tool, electric

1212463

<https://www.phoenixcontact.com/in/products/1212463>



Mobile automatic stripping and crimping device, service tool, replacement part (waste guide plate), cutting tool (CUTFOX 12), on-tape ferrules

HC-HS-06-I-PT-F - Contact insert

1031080

<https://www.phoenixcontact.com/in/products/1031080>



CF CRIMPHANDY 0,75 - Crimping tool, electric

1212464

<https://www.phoenixcontact.com/in/products/1212464>



Mobile automatic stripping and crimping device, service tool, replacement part (waste guide plate), cutting tool (CUTFOX 12), on-tape ferrules

CF CRIMPHANDY 1,0 - Crimping tool, electric

1212465

<https://www.phoenixcontact.com/in/products/1212465>



Mobile automatic stripping and crimping device, service tool, replacement part (waste guide plate), cutting tool (CUTFOX 12), on-tape ferrules

HC-HS-06-I-PT-F - Contact insert

1031080

<https://www.phoenixcontact.com/in/products/1031080>



CF CRIMPHANDY 1,5 - Crimping tool, electric

1212466

<https://www.phoenixcontact.com/in/products/1212466>



Mobile automatic stripping and crimping device, service tool, replacement part (waste guide plate), cutting tool (CUTFOX 12), on-tape ferrules

CRIMPFOX 6 - Crimping pliers

1212034

<https://www.phoenixcontact.com/in/products/1212034>



Crimping pliers, for ferrules without insulating collar according to DIN 46228 Part 1 and ferrules with insulating collar according to DIN 46228 Part 4, 0.25 mm² ... 6.0 mm², lateral entry, trapezoidal crimp

HC-HS-06-I-PT-F - Contact insert

1031080

<https://www.phoenixcontact.com/in/products/1031080>



CRIMPFOX CENTRUS 10S - Crimping pliers

1213154

<https://www.phoenixcontact.com/in/products/1213154>



Crimping pliers, for uninsulated and insulated ferrules, DIN 46228 Part 1 and 4, from 0.14 mm² ... 10 mm², also for TWIN ferrules up to 2 x 4 mm², automatic cross section adjustment, lateral insertion, equipped with fall protection

CRIMPFOX CENTRUS 6S - Crimping pliers

1213144

<https://www.phoenixcontact.com/in/products/1213144>



Crimping pliers, for uninsulated and insulated ferrules, DIN 46228 Part 1 and 4, from 0.14 mm² ... 6 mm², also for TWIN ferrules up to 2 x 4 mm², automatic cross section adjustment, lateral insertion, equipped with fall protection

Phoenix Contact 2025 © - all rights reserved
<https://www.phoenixcontact.com>

PHOENIX CONTACT (I) Pvt. Ltd.
A-58/2, Okhla Industrial Area, Phase - II, New Delhi-110 020

+91.1275.71420
info@phoenixcontact.co.in