



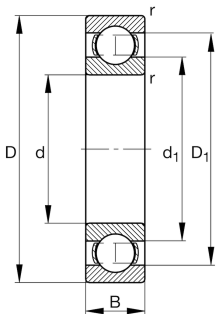
FAG

6013-C3 [🔗](#)

Deep groove ball bearing

Deep groove ball bearing 60, single row, steel  
sheet metal cage

Technical information



Your current product variant

Sealing	Without	Not sealed
Cage	JN	Steel sheet metal
Tolerance class	PN	Normal (PN)
Dimensional / heat stabilization	S0	Rings dimensional stabilized up to 150°
Lubricant	Without	Bearing not greased
Radial internal clearance	C3 (Group 3)	Internal clearance larger than CN
Bore type	Z	Cylindrical

Main Dimensions & Performance Data

d	65 mm	Bore diameter
D	100 mm	Outside diameter
B	18 mm	Width
C <sub>r</sub>	32,500 N	Basic dynamic load rating, radial
C <sub>0r</sub>	25,000 N	Basic static load rating, radial
C <sub>ur</sub>	1,300 N	Fatigue load limit, radial
n <sub>G</sub>	9,500 1/min	Limiting speed
n <sub>gr</sub>	7,100 1/min	Reference speed
≈m	0.418 kg	Weight



Mounting dimensions

$d_{a\min}$	71 mm	Minimum diameter shaft shoulder
$D_{a\max}$	94 mm	Maximum diameter of housing shoulder
$r_{a\max}$	1 mm	Maximum fillet radius

Dimensions

$r_{\min}$	1.1 mm	Minimum chamfer dimension
$D_1$	88.8 mm	Shoulder diameter outer ring
$D_2$	91.52 mm	Caliber diameter outer ring
$d_1$	76.225 mm	Shoulder diameter inner ring

Temperature range

$T_{\min}$	-30 °C	Operating temperature min.
$T_{\max}$	150 °C	Operating temperature max.

Calculation factors

$f_0$	15.7	Calculation factor
-------	------	--------------------

Characteristics

	Radial load
	Axial load in one direction
	Axial load in two directions
	Grease Lubrication
	Oil Lubrication
	Not sealed