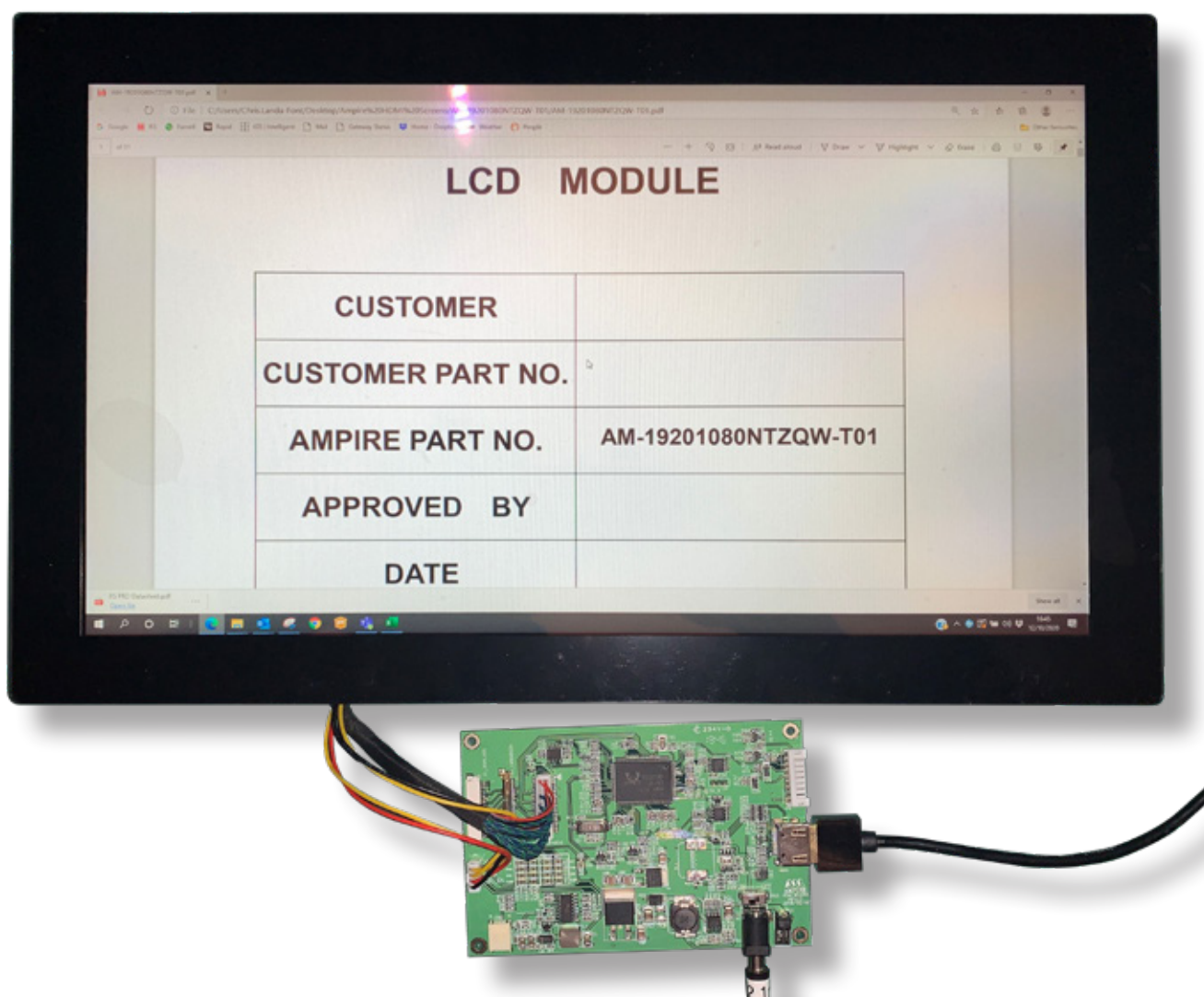


# Quick Start Guide

## AM-19201080NTZQW-T01

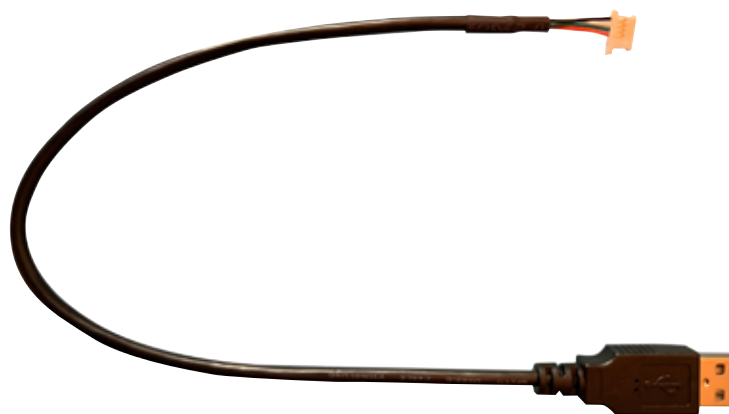
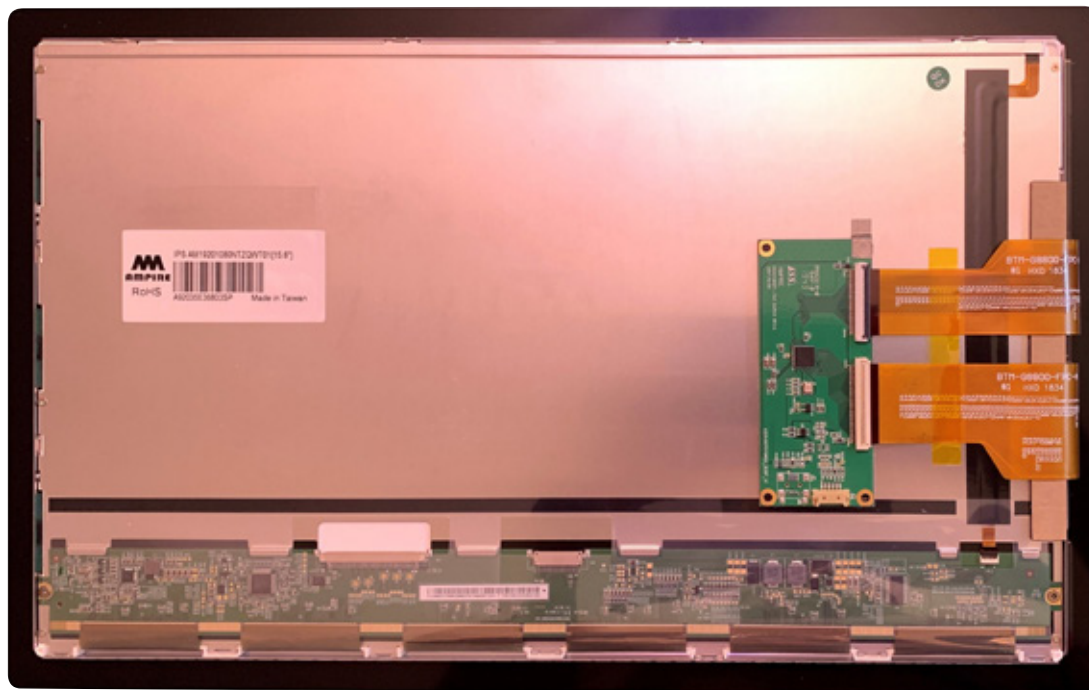


## CONTENTS

Kit Content	<a href="#">page 2</a>	Part 1: Connecting the driver card to the display	<a href="#">page 3</a>
Required Parts not Supplied in Kit	<a href="#">page 2</a>	Part 2: Connecting the touch panel	<a href="#">page 5</a>

## KIT CONTENTS

Item	Description	Qty
1	Display with touch panel	1
2	Driver card	1
3	USB adapter cable from IDS Ltd	1



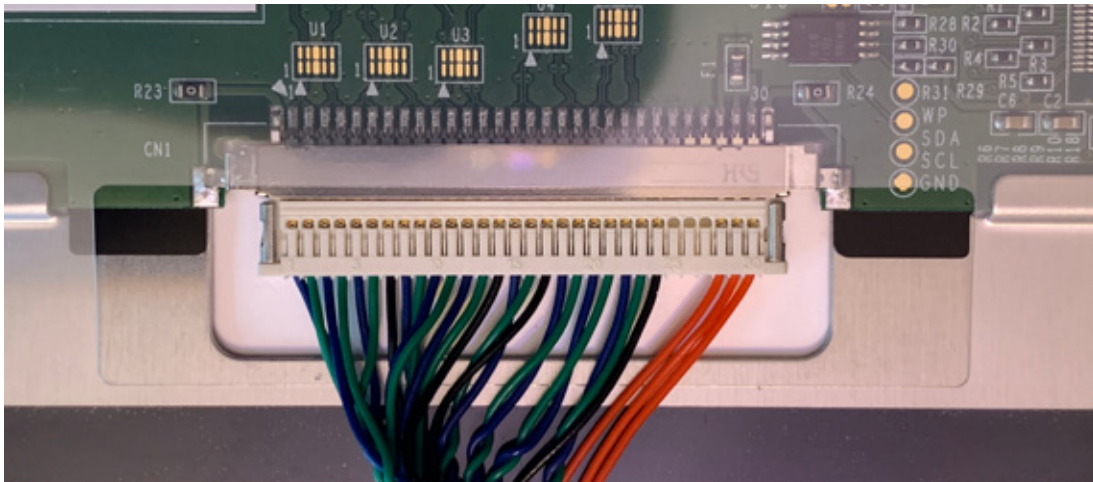
## REQUIRED PARTS NOT SUPPLIED IN THE KIT

Item	Description	RS Part Number
1	12V 2A Power supply with 2.1 mm x 5.5mm DC Jack	144-0971
2	HDMI cable	182-8473

## PART 1: CONNECTING THE DRIVER CARD TO THE DISPLAY

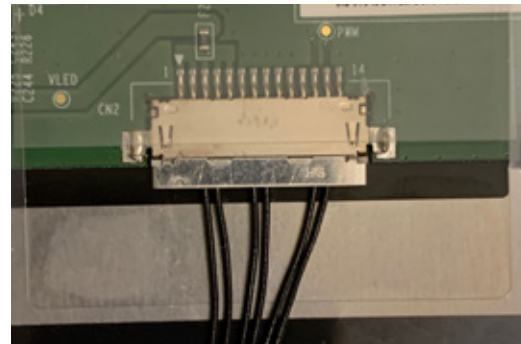
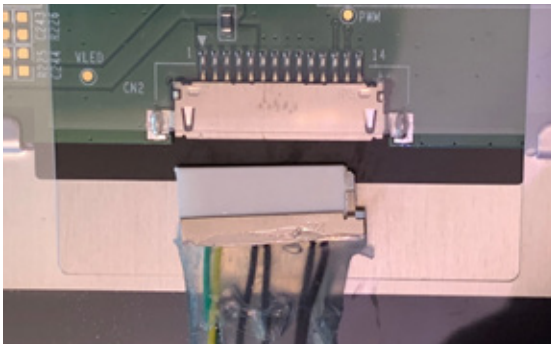
Connect the LVDS connector from the driver card to the back of the LCD.

Take care to line up the pins and use the correct orientation as per the picture below.

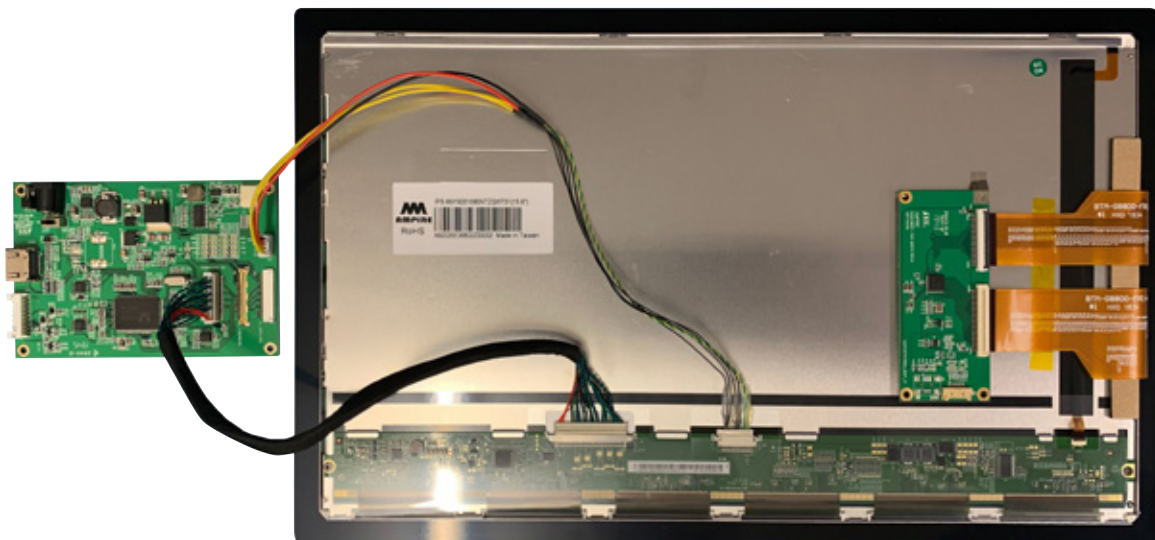


Connect the backlight connector from the driver card to the back of the LCD.

Take care to line up the pins and use the correct orientation as per the picture below.



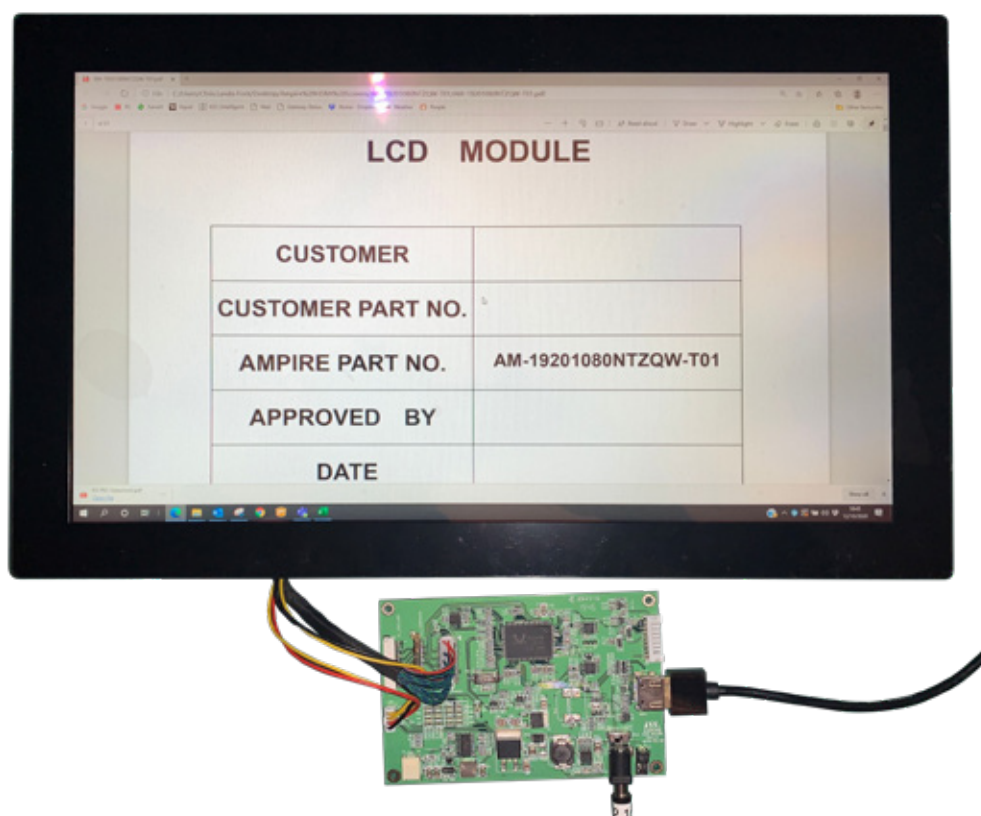
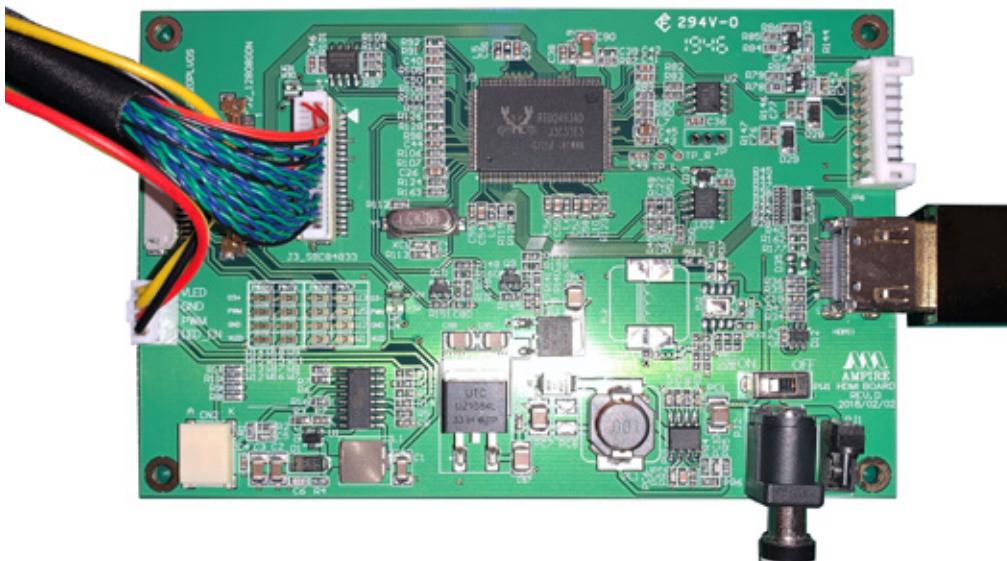
The connections should look like this





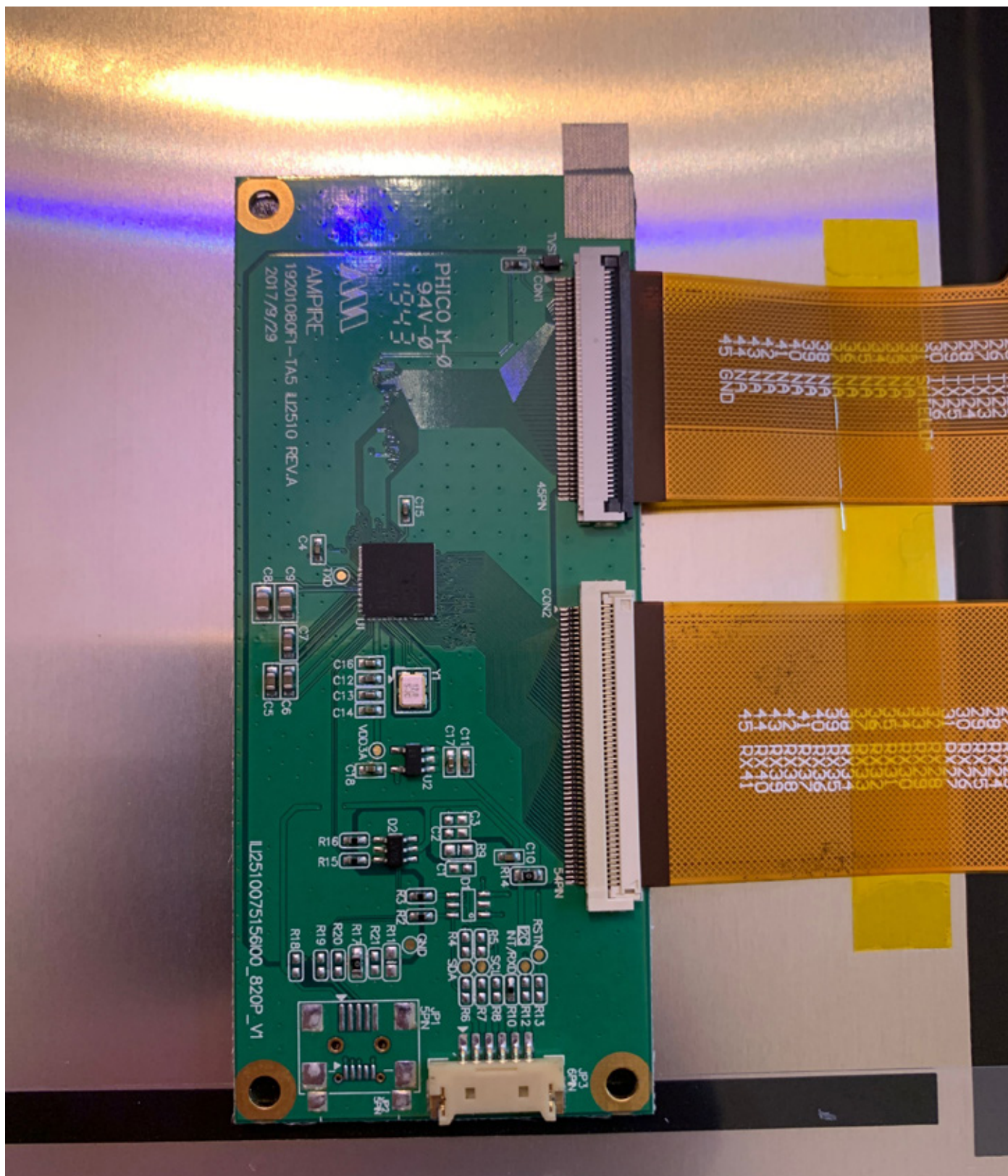
## CONNECT THE DRIVER CARD TO THE POWER SUPPLY AND HDMI SOURCE

Connect the power connector to the 12V DC power supply using a 2.1mm connector with centre positive and barrel negative.  
Connect the HDMI connector to your source.



## PART 2: CONNECTING THE TOUCH PANEL

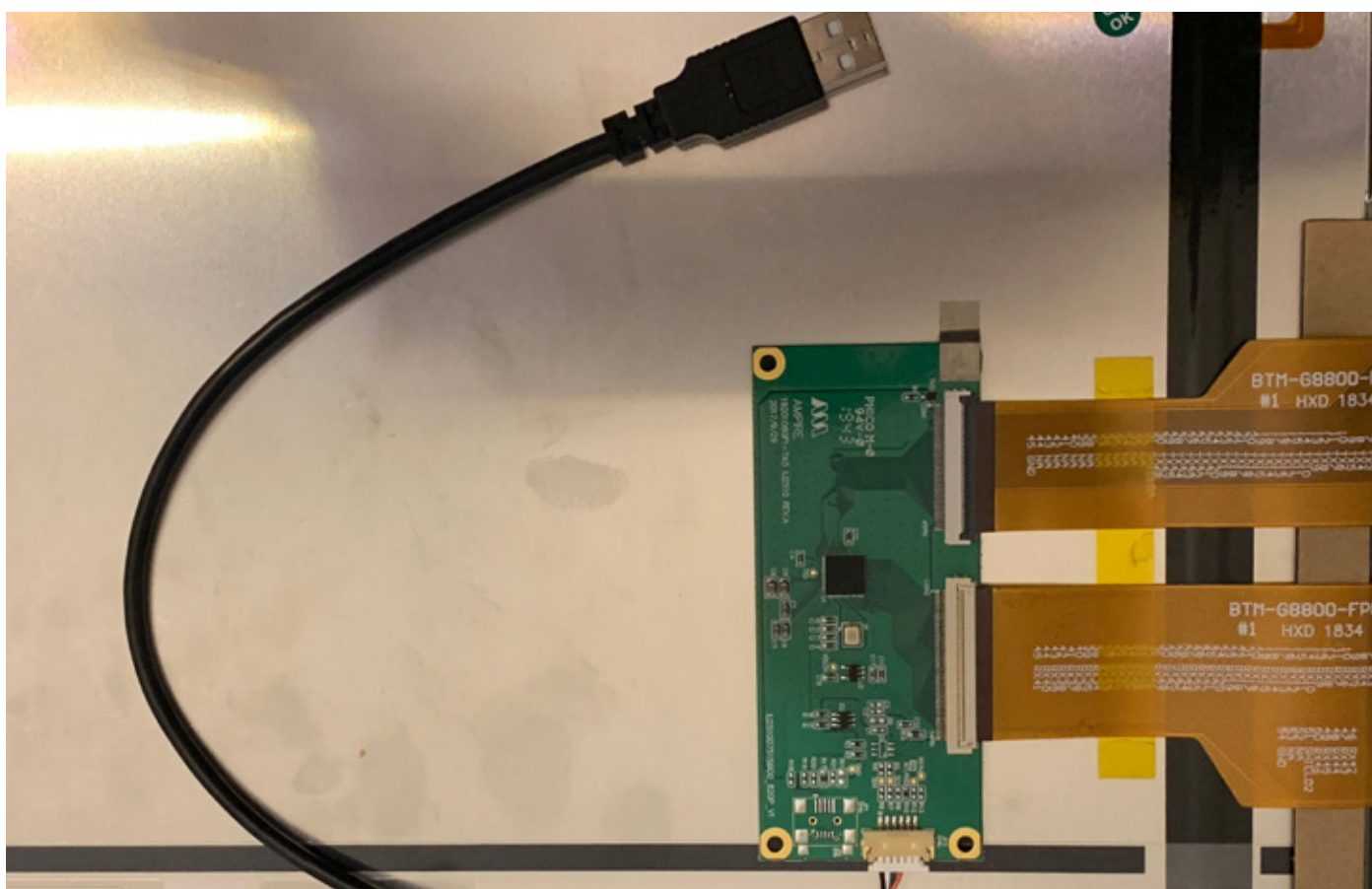
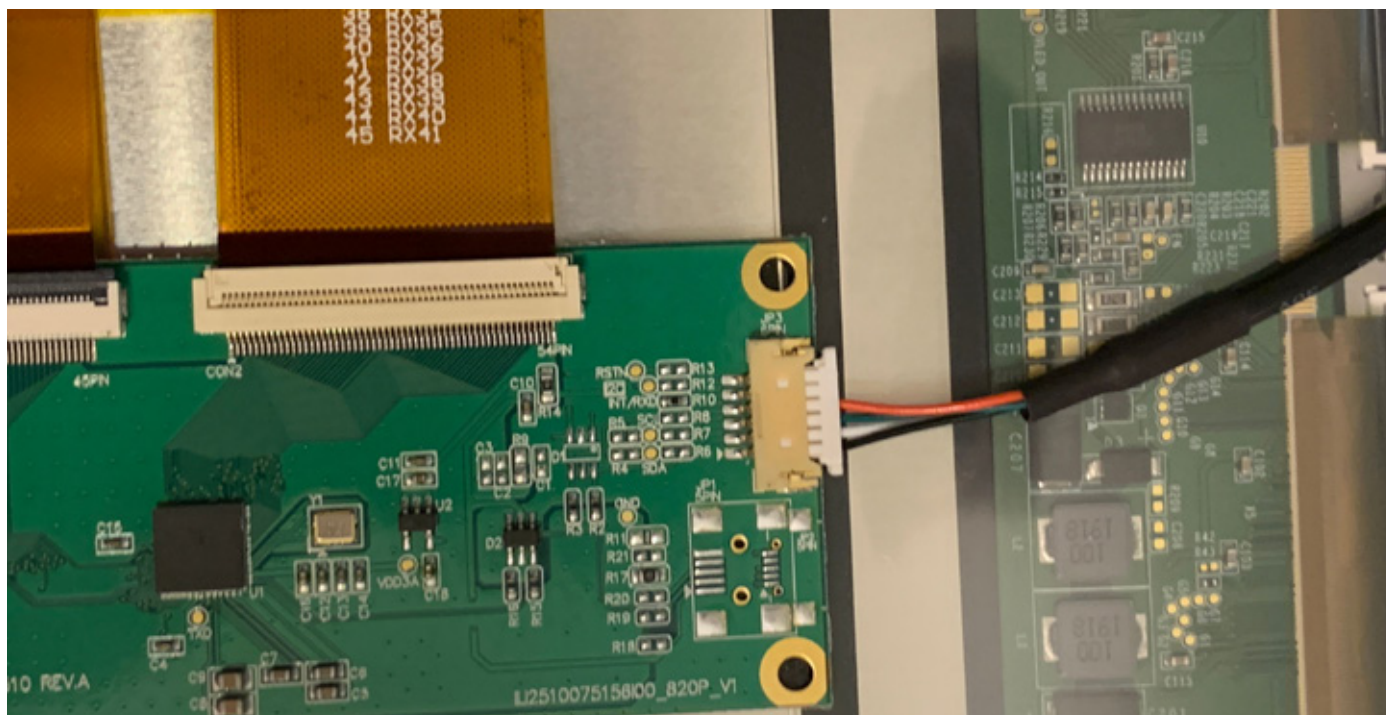
The display has a PCB with the touch controller. The PCB has a connector with the USB connections.





## PART 2: CONNECTING THE TOUCH PANEL

Note the correct orientation and then push the USB adapter cable connector into the display touch connector.



Insert the USB connector into your PC

The touch screen will be automatically recognised and installed by Windows 10.

## FURTHER INFORMATION

The values contained in this data sheet can change due to technical innovation. Any such changes will be made without separate notification.

If you require further assistance or have a specific or custom enquiry, please contact the IDS team via email or phone. Alternatively please visit our website for more product info and to see our full range.



Unit 2, Berkshire Business Centre,  
Berkshire Drive, Thatcham,  
Berkshire, RG19 4EW

+44 (0)1635 294600

[info@i-lcd.com](mailto:info@i-lcd.com)

[www.i-lcd.com](http://www.i-lcd.com)

## ABOUT IDS

Intelligent Display Solutions was established in 2001 by display industry experts. We have extensive knowledge of both the technical and user interface approaches to designing displays for various applications, using LCD, TFT and OLED technologies. We work with our customers to develop new and innovative displays - some award-winning - to enhance their products.

IDS is a division of Intelligent Group Solutions Ltd (IGS) - a well-established, respected, industry-leading Optoelectronics solutions provider. Much of IGS' business comes from providing semi-custom or custom products, both in component and sub-assembly form. We offer design support and prototyping within the European marketplace, with the capability to deliver production displays to wherever in the world the customer's manufacturing or assembly is being undertaken.

## INTELLIGENT GROUP SOLUTIONS DIVISIONS

