



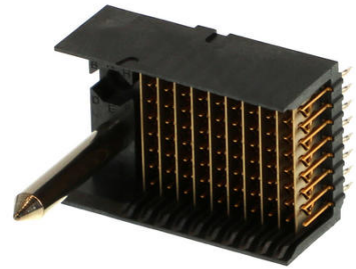
**Part Number :** [740611004](#)

**Product Description :** 2.00mm Pitch VHDM Single-Ended Board-to-Board Backplane Header, Vertical, 8 Rows, Guide Pin Signal Module, Pin End Version, 80 Circuits, 10 Columns, Pin Length 5.15mm

**Series Number :** 74061

**Status :** Active

**Product Category :** Backplane Connectors



---

## Documents & Resources

### Drawings

[740611004 sd.pdf](#)

[PK-74061-003-001.pdf](#)


### Specifications

[PS-74031-999-001.pdf](#)

---

## Product Environment Compliance

### Compliance

GADSL/IMDS	Not Relevant
China RoHS	 per SJ/T 11365-2006
EU ELV	Not Relevant
Low-Halogen Status	Low-Halogen per IEC 61249-2-21
REACH SVHC	Not Contained per D(2025)4165-DC (25 June 2025)
EU RoHS	Compliant per EU 2015/863

### Compliance Statements

- EU RoHS
- REACH SVHC
- Low-Halogen

### Industry Documents

- IPC 1752A Class C
- IPC 1752A Class D

- Molex Product Compliance Declaration
- IEC-62474
- chemSHERPA (xml)

Substances of Interest

- PFAS

EU RoHS Certificate of Compliance

Additional Product Compliance Information

---

**Part Details**

**General**

Status	Active
Category	Backplane Connectors
Series	74061
Description	2.00mm Pitch VHDM Single-Ended Board-to-Board Backplane Header, Vertical, 8 Rows, Guide Pin Signal Module, Pin End Version, 80 Circuits, 10 Columns, Pin Length 5.15mm
Application	Backplane
Comments	No Keying Position
Component Type	PCB Header
Product Name	VHDM
UPC	800753253599

**Agency**

CSA	LR19980
UL	E29179

**Electrical**

Current - Maximum per Contact	3.0A
Data Rate	3.125 Gbps
Shielded	Yes
Shield Type	Ground Plane Shield
Voltage - Maximum	120V AC (RMS)/DC

**Physical**

Circuits (Loaded)	80
Circuits (maximum)	80
Color - Resin	Black
Durability (mating cycles max)	200
First Mate / Last Break	No
Flammability	94V-0
Guide to Mating Part	Yes
Keying to Mating Part	None
Material - Metal	Beryllium Copper, High Performance Alloy (HPA), Stainless Steel
Material - Plating Mating	Gold
Material - Plating Termination	Tin-Lead
Material - Resin	High Temperature Thermoplastic
Net Weight	8.375/g
Number of Columns	10
Number of Pairs	Open Pin Field
Number of Rows	8
Orientation	Vertical
Packaging Type	Tube
PCB Locator	No
PCB Retention	None
PCB Thickness - Recommended	1.80mm
PC Tail Length	2.50mm
Pitch - Mating Interface	2.00mm
Pitch - Termination Interface	1.00mm
Plating min - Mating	0.762µm
Plating min - Termination	0.762µm
Polarized to PCB	Yes
Temperature Range - Operating	105°C max
Termination Interface Style	Through Hole - Compliant Pin

### Solder Process Data

Lead-Free Process Capability	N/A
------------------------------	-----

---

## Mates With / Use With

### Mates with Part(s)

Description	Part Number
VHDM Daughtercards	<u>74040</u>

---

## Application Tooling

### Global

Description	Part Number
Signal Pin Inserter Repair Tool	<u>622015700</u>
8-Row Pin and Shield Repair Tool	<u>622015900</u>

---

This document was generated on Nov 05, 2025