



Quality Products. Service Excellence.

ABS Plastic Sloping Consoles 1599T Series

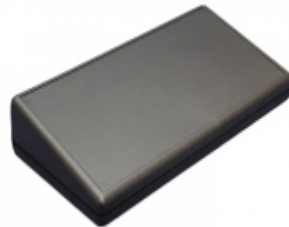
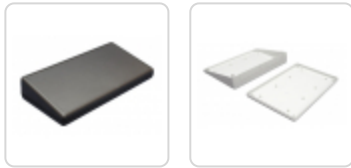
PC Board Standoffs, Battery Doors

Features:

- Rear of units contain one or two (depending on console size), flat removeable panels for easy modifications.
- Standard versions are molded from flame retardant ABS plastic. Material carries a UL flammability rating of 94V-0.
- Economy version is molded from general purpose (not flame retardant) ABS plastic.



Photo Features:



Short slope (above) and long slope (below).



Standard models use machine screws into brass bushings. Economy models use self tapping screws.



PC board standoffs on the inside top and bottom. Models contain one or two removable rear panels.



Accessories

Screws:

Accessory screws for mounting P.C. boards into standoffs (#4 x 1/4" pan head) P/N **1593ATS50** (qty. 50), P/N **1593ATS100** (qty. 100).

Replacement machine screw, used in flame retardant ABS series (ie...with brass inserts). M3 - 0.5 x 10 mm **1591MS100** - Package of 100.

Optional Battery Holders



- Designed for our battery door enclosure (part numbers ending in BAT).
- Includes all the parts required to install the battery or batteries.
- Includes the battery holder, wires and foam anti-rattle pad.
- Refer to "Battery Holder Compatibility" table below.

Enclosures

Standard Version	Economy Version	Color	Slope Form	Battery Door	Removable Panels	Front to Rear Depth	Width	Rear Enclosure Height	Front Enclosure Height
1599ETSBK		Black	Short	No	1	3.37	6.69	1.34	0.73
1599ETSGY	1599ESTSGY	Grey	Short	No	1	3.37	6.69	1.34	0.73
1599HTSBK		Black	Short	No	2	4.33	8.66	1.57	0.75
1599HTSGY	1599HSTSGY	Grey	Short	No	2	4.33	8.66	1.57	0.75
1599KTSBK		Black	Short	No	2	5.51	8.66	1.83	0.82
1599KTSGY	1599KSTSGY	Grey	Short	No	2	5.51	8.66	1.83	0.82
1599KTLBK		Black	Long	No	1	8.66	5.50	1.60	0.71
1599KTLGY	1599KSTLGY	Grey	Long	No	1	8.66	5.50	1.60	0.71
1599KTLBKBAT		Black	Long	Yes	1	8.66	5.50	1.60	0.71
1599KTLGYBAT	1599KSTLGYBAT	Grey	Long	Yes	1	8.66	5.50	1.60	0.71

Battery Holder Compatibility

Part Number	Battery Holder Kit For:	Fits Battery Door Enclosure Size:
BH1AAW	1 AA Cell	1599E, 1599H & 1599K series
BH2AAW	2 AA Cells	1599E, 1599H & 1599K series
BH3AAW	3 AA Cells	1599H & 1599K series
BH4AAW	4 AA Cells	1599H & 1599K series
BH1AAAW	1 AAA Cell	1599B, 1599E, 1599H & 1599K series
BH2AAAW	2 AAA Cells	1599B, 1599E, 1599H & 1599K series
BH3AAAW	3 AAA Cells	1599E, 1599H & 1599K series
BH4AAAW	4 AAA Cells	1599H & 1599K series
BS61	1 - 9V Cell	1599B, 1599E, 1599H & 1599K series

Data subject to change without notice

© 2021. Hammond Manufacturing Ltd. All rights reserved.