

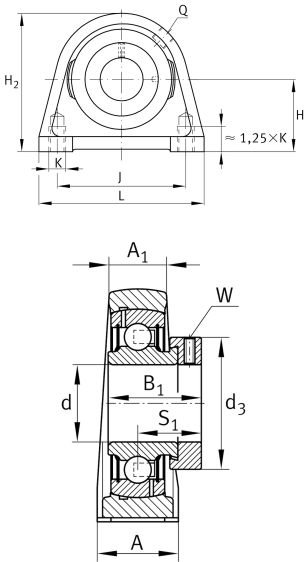
PSHE55-XL

Plummer block housing unit

Plummer block housing units PSHE, cast iron housing, radial insert ball bearing with eccentric locking collar, P seals

X-life

Technical information



Your current product variant

Material	GG	Grey cast iron
----------	----	----------------

Main Dimensions & Performance Data

d	55 mm	Bore diameter
L	150 mm	Length total
H ₂	125 mm	Height
≈m	3.48 kg	Weight

Mounting dimensions

J	118 mm	Distance fixing bore
K	M16	Thread fixing bore

Dimensions

H	64 mm	Distance shaft axis
A	60 mm	Width (base)
A ₁	35 mm	Width (head)
Q	M6	Connection thread for lubrication
B ₁	48.4 mm	Locking collar total width
S ₁	35.9 mm	Distance of raceway to locking collar



Additional information

SHE11	Housing
GRAE55-XL-NPP-B	Bearing designation

Temperature range

T _{min}	-20 °C	Operating temperature min.
T _{max}	120 °C	Operating temperature max.