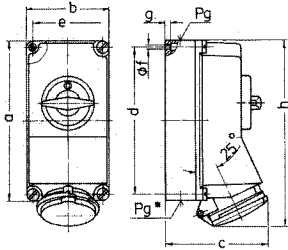


CEEform receptacles, switched, interlocked

to DIN VDE 0623, EN 60309-2. Colour: Electric grey and/or code colour. Enclosure and insert made of **Amaplast**. Other voltages and frequencies available on request. CEEform receptacles with DUO interlock can be padlocked. See page 86/87 for details.

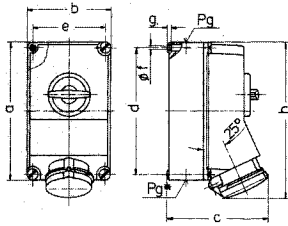


Drawing	Amp.	16			32		
		Poles			Poles		
1 MB 174		3	4	5	3	4	5
Dim. in mm	a	225	225	225	225	225	225
	b	118	118	118	118	118	118
	c	141	141	141	146	146	146
	d	208	208	208	208	208	208
	e	101	101	101	101	101	101
	f	6,3	6,3	6,3	6,3	6,3	6,3
	g	8	8	8	8	8	8
	h	250	252	254	264	264	264
	Pg	2x21	2x21	2x21	2x21	2x21	2x21
	Pg*	2x21	2x21	2x21	2x21	2x21	2x21
Cond. cross section (mm ²) min.-max.	1,5 -4	1,5 -4	1,5 -4	2,5 -10	2,5 -10	2,5 -10	
Max. cable diam. (mm)	20,5	20,5	20,5	20,5	20,5	20,5	

Receptacle switched, with mechanical DUO-interlock

▲ IP 44

Product group 1075. Type 5103 shown.

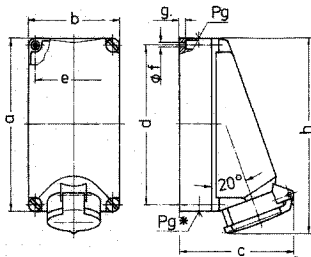


Drawing	Amp.	63		
		Poles		
1 MB 234		3	4	5
Dim. in mm	a	264	264	264
	b	163	163	163
	c	192	192	192
	d	240	240	240
	e	140	140	140
	f	8,1	8,1	8,1
	g	8	8	8
	h	300	300	300
	Pg	29	29	29
	Pg*	2x29	2x29	2x29
Cond. cross section (mm ²) min.-max.	6 -25	6 -25	6 -25	
Max. cable diam. (mm)	27	27	27	

Receptacle with Soft-Contact switched, with mechanical DUO-interlock

▲ IP 44

Product group 1075. Type 5959 shown.

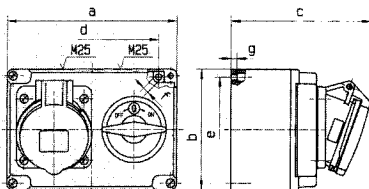


Drawing	Amp.	32			63		
		Poles			Poles		
1 MB 142		3	4	5	3	4	5
Dim. in mm	a	225	225	225	225	225	225
	b	118	118	118	118	118	118
	c	139	148	150	150	150	152
	d	208	208	208	208	208	208
	e	101	101	101	101	101	101
	f	6,3	6,3	6,3	6,3	6,3	6,3
	g	8	8	8	8	8	8
	h	247	252	252	253	253	253
	Pg	2x21	2x21	2x21	2x21	2x21	2x21
	Pg*	2x21	2x21	2x21	2x21	2x21	2x21
Cond. cross section (mm ²) min.-max.	1,5 -4	1,5 -4	1,5 -4	2,5 -10	2,5 -10	2,5 -10	
Max. cable diam. (mm)	20,5	20,5	20,5	20,5	20,5	20,5	

Receptacle switched, with mechanical DODSCH-interlock

▲ IP 44

Product group 1077. Type 5116 shown.

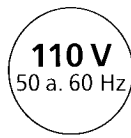
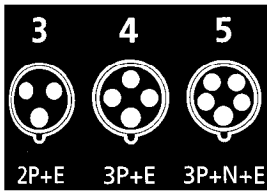


Drawing	Amp.	16		
		Poles		
1 MB 398		3	4	5
Dim. in mm	a	170	170	170
	b	118	118	118
	c	113	119	117
	d	134	134,5	134,5
	e	103	103	103
	f	6,1	6,1	6,1
	g	6	6	6
	h	25	25	25
	M	25	25	25
	Pg	2x21	2x21	2x21
Pg*	2x21	2x21	2x21	
Cond. cross section (mm ²) min.-max.	1,5 -4	1,5 -4	1,5 -4	
Max. cable diam. (mm)	15,5	15,5	15,5	

Receptacle switched, with mechanical DUO-interlock

▲ IP 44

Product group 1085. Type 7276 shown.



Amps

Poles

3 pole 4 pole 5 pole
4h 4h 4h

3 pole 4 pole 5 pole
6h 9h 9h

3 pole 4 pole 5 pole
9h 6h 6h

3 pole 4 pole 5 pole
7h 7h 7h

3 pole 4 pole 5 pole
10h 10h 10h

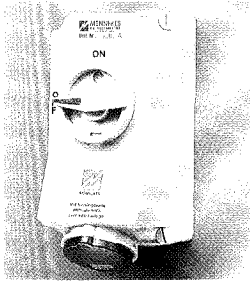
3 pole 4 pole 5 pole
2h 2h 2h

Part Numbers

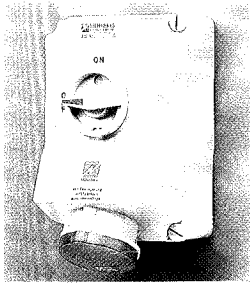
Std. Pack.

Weight

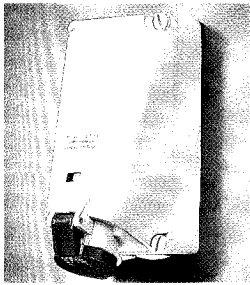
Qty. g/each



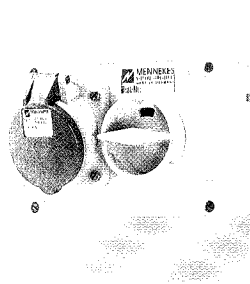
16	3	7010	7002			1	1050
16	4		5099	5100	5101	1	1100
16	5		5102	5103		1	1120



32	3	5743	5696			1	1200
32	4		5104	5105	5106	1	1170
32	5		5107	5108		1	1220



63	3	6569	6571			3	2450
63	4		5955	5956	5957	3	2490
63	5			5959		3	2630



16	3	5466	5114	5115		4	910
16	4		5116	5117	5118	4	985
16	5		5119	5120		4	1030
32	3	5473	5121	5122		4	1050
32	4		5123	5124	5125	4	1080
32	5		5126	5127		4	1170



16	3	7273	7274			4	700
16	4		7380	7275		4	725
16	5			7276		4	750