



MP3B016

Application

- Designed for use in industrial and commercial installations, ideal replacement for switch/fuse.
- Control and isolation of heating, lighting, motors, pumps and compressors.
- Device is suitable for installations near source due to high breaking capacity.
- Suitable for switching inductive loads, AC23 contact rating and high mechanical endurance.
- Security of isolation, positive contact indication in accordance with BS 7671 and padlockable rotary handle.

Offer

- Supplied with incoming terminal shield.
- Removable front cover provides all round cabling access.
- Removable gland plates with knock outs of 32, 25 and 20mm.
- Terminals accept 35mm² in bare cable connectors.
- Trip indication and test button.
- Disconnectable neutral with 3 pole device.

Accessories (See page 94)

- Voltage releases for remote tripping.
- Auxiliary contacts for remote indication.
- Terminal shields.

Technical data

- Designed and tested to BS EN 60947-2.
- Enclosure ingress protection IP42.
- Rated operational voltage Ue 415V.
- Rated current at 40°C.
- Rated ultimate short-circuit breaking capacity Icu = 70,000A.
- Rated service short-circuit breaking capacity Isu = 100% Icu = 70000A.
- Endurance-o cycles:
 - Mechanical: 20,000
 - Electrical: In/2 10,000
In 7,000



MP3B016

Range

Rating (A)	Motor rating for 3 pole MCCB's			Two Pole	3 pole + neutral
	kW	HP	Running current		
16	5.5	7.5	11	MP2B016	MP3B016
20	7.5	10	14.4	MP2B020	MP3B020
25	9.3	12.5	17.3	MP2B025	MP3B025
32	11	15	21	MP2B032	MP3B032
40	15	20	28	MP2B040	MP3B040
50	22	30	40	MP2B050	MP3B050
63	30	40	54	MP2B063	MP3B063

Note: Motor ratings are based on DOL starting assuming 7 x FLC with a run up time of 6 - 10s



MP3SD020

Application

- Designed for use in industrial and commercial installations, ideal replacement for traditional isolators.
- Control and isolation of heating, lighting, motors, pumps and compressors.
- Suitable for switching inductive loads, AC23 contact rating and high mechanical endurance.
- Security of isolation, positive contact indication in accordance with BS7671 and padlockable rotary handle.

Offer

- Supplied with incoming terminal shield.
- Removable front cover provides all round cabling access.
- Removable gland plates with knock outs of 32, 25 and 20mm.
- Terminals accept 35mm² in bare cable connectors.
- Disconnectable neutral with 3 pole device.

Accessories (See page 94)

- Voltage releases for remote tripping and emergency stop function.
- Auxiliary change over contacts.
- Terminal shields.

Technical data

- Designed and tested to BS EN 60947-2.
- Enclosure ingress protection IP42.
- Rated operational voltage Ue 415V.
- Rated current at 40°C.
- Endurance-o cycles:

<input type="checkbox"/> Mechanical:	20,000
<input type="checkbox"/> Electrical:	In/2 10,000
	In 7,000



MP3SD020

Range

Rating (A)	Two Pole	3 pole + neutral
20	MP2SD020	MP3SD020
32	MP2SD032	MP3SD032
63	MP2SD063	MP3SD063

Application

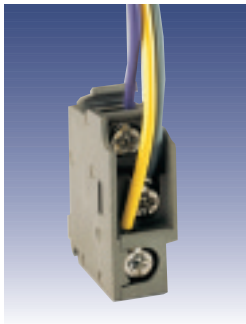
The OF is a changeover contact which is fitted inside the device and operates simultaneously with the device, this can be used to provide a means of visual or audible indication of whether the circuit breaker is open or closed.

The SD contact is also a changeover contact, which will operate only if the breaker is tripped by a fault, shunt trip or UVR. This means an output for a visual or audible warning may be provided for emergency indication.

The part number is the same. Whether the switch function is OF or SD type is dependant upon where it is fitted within the device. Each device will hold one OF and one SD contact, an under voltage release OR shunt trip may also be fitted.

Accessories and auxiliaries for use with Minipact switch disconnectors and moulded case circuit breakers.

Each Minipact MCCB or switch disconnector will accept one OF contact and one SD contact.



29450

Electrical characteristics - changeover switch

Part N°. 29450

Rated thermal current

Utilisation category (IEC 947-4-1)

	6A	
	AC12	AC15
24V	6A	6A
48V	6A	6A
110V	6A	5A
220/240V	6A	4A
380/415V	6A	3A
440-V	6A	3A
660/690V	6A	0.1A



28082

	Volts	Pick up	Seal in	Response time (ms)	Part N°.
AC 50Hz					
UVR	220/240	<10VA	<5VA	<50	28082
UVR	380/415	<10VA	<5VA	<50	28083
Shunt trip	220/240	<10VA	<5VA	<50	28072
Shunt trip	380/415	<10VA	<5VA	<50	28073
OF/SD					29450

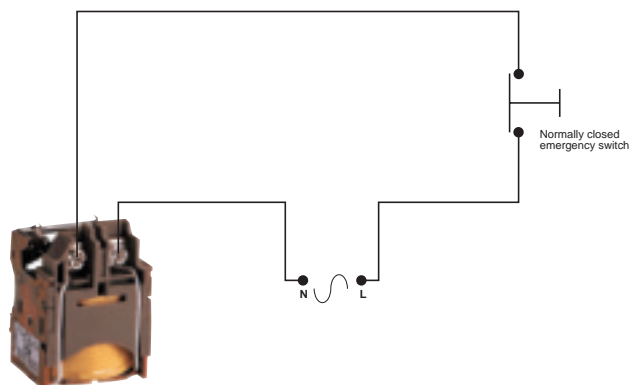
Accessories

Part N°.

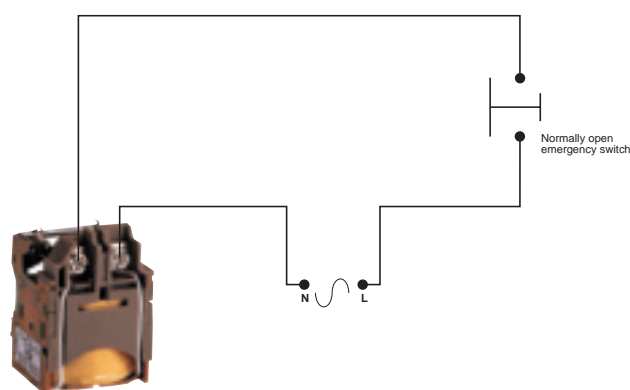
1 pair of terminal shields 3P

28034

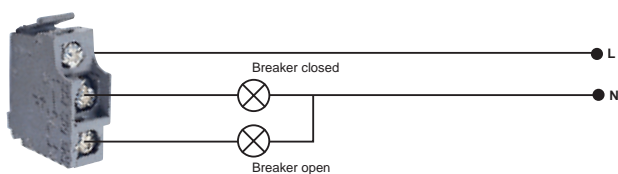
Undervoltage release circuit (MN)



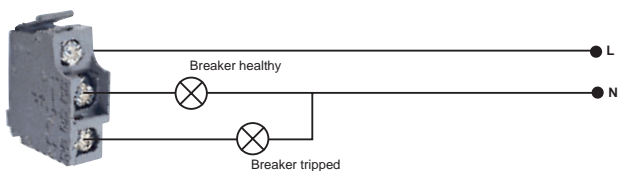
Shunt trip circuit (MX)



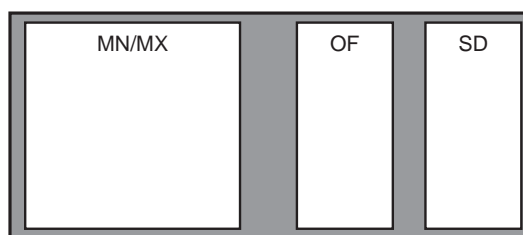
Auxiliary used as OF



Auxiliary used as SD



Minipact accessory fitting positions



Minipact

Discrimination limits for Minipact downstream of other Merlin Gerin products

Upstream device	NS160N/H/L Trip unit TM-D				NS250N/H/L Trip unit TM-D			NS160N/H/L Trip unit STR22SE		NS250N/H/L Trip unit STR22SE	
Downstream rating (A)	80	100	125	160	160	200	250	125	160	200	250
Device											
Minipact <50A	2	2	2	2	T	T	T	2	2	T	T
63A		2	1.25	1.25	T	T	T		2		T

Upstream device	NS400N/H/L Trip unit STR22SE/53UE					NS630N/H/L Trip unit STR22SE/53UE				
Downstream rating (A)	160	200	250	320	400	25	320	400	500	630
Device										
Minipact <50A	T	T	T	T	T	T	T	T	T	T
63A	T	T	T	T	T	T	T	T	T	T

Full discrimination is also achieved with the following Merlin Gerin devices:

All "Compact C" MCCB's equal to and above 800A.

All H1 and H2 "Masterpact" ACB's

For discrimination values between Minipact and "L" type "Masterpacts" please consult us.

Discrimination values in kA.

'T' = total discrimination up to breaking capacity of downstream device.

Discrimination limits for Minipact upstream of other Merlin Gerin products

Upstream device	Rating (A)	Minipact 63
Downstream device		
C60H	<10	T
B, C, D	16A	T
	20A	T
	25A	T
	32A	6
	40A	
	50A	
	63A	

Guidance for motor loads

Specific "magnetic only" MCCB's are available for short circuit protection of motors. However, the standard MCCB may be used, as detailed below.

	Max motor size (kW)	Running current (A) @ 415V
16A	2.2	5.0
25A	3.7	7.5
40A	4	8.4
63A	9	17
80A	15	28
100A	22	40
125A	25	47
160A	33	60
200A	45	80
250A	69	128

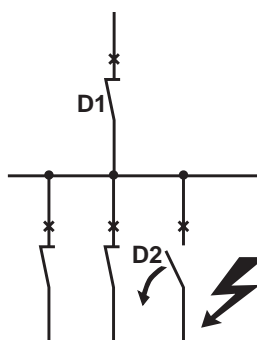
Note:

- These tables offer guidance only, for DOL starting assuming:
 - A starting current of 7 x FLC
 - Run-up time = 8 seconds for motors < 3kW
 - 10 seconds for motors > 3kW
- The running current is a typical value and may vary from manufacturer to manufacturer.

Safepact 2

Discrimination

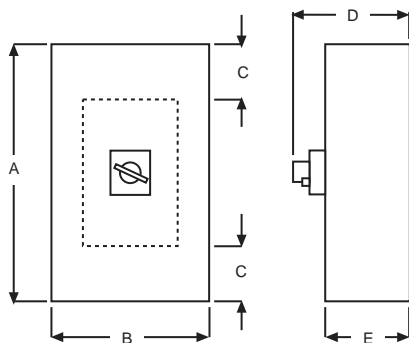
The table below indicates where total discrimination exists between devices.



Upstream	Compact rating (A)		MGE1003	MGE1253	MGE1603	MGE2003	MGE2508	MGE4003	MGE6303
Downstream circuit breaker	Rating (A)								
multi 9	C60H	10 to 16	■	■	■	■	■	■	■
		20 to 25		■	■	■	■	■	■
		32 to 40		■	■	■	■	■	■
		50 to 63			■	■	■	■	■
Compact	NS80H	2.5 to 6.3	■	■	■	■	■	■	■
		12.5		■	■	■	■	■	■
		25 to 80			■	■	■	■	■
	NS100N	16 to 100				■	■	■	■
	NS160N	125 to 160						■	■
	NS250N	200 to 250							■

Note: For further information on this product range: consult us.

Safepact 2 MCCB or switch disconnecter general purpose enclosure IP40

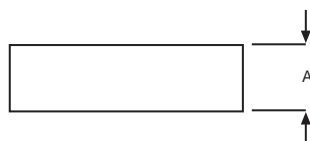


Dimensions (mm)

		Height	Width	Cable space	Overall depth	Enclosure depth
Rating		A	B	C*	D	E
Up to 100A		420	230	140	211	145
160A						
250A						
400A		700	356	236	235	169
630A						

Note: C* - we recommend fitting cable extension boxes on each end of the 160, 250 and 630A ratings, unless utilising trunking

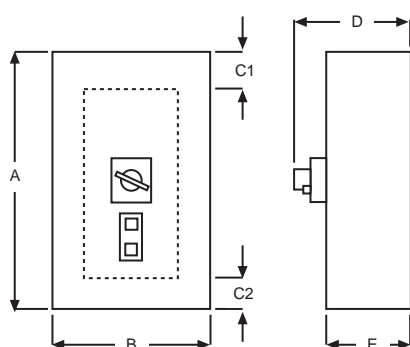
Extension boxes for Safepact 2 MCCB enclosures



Dimensions (mm)

Height (A)	Part N°
100	MGEX 160
200	MGEX 250
120	MGEX 630

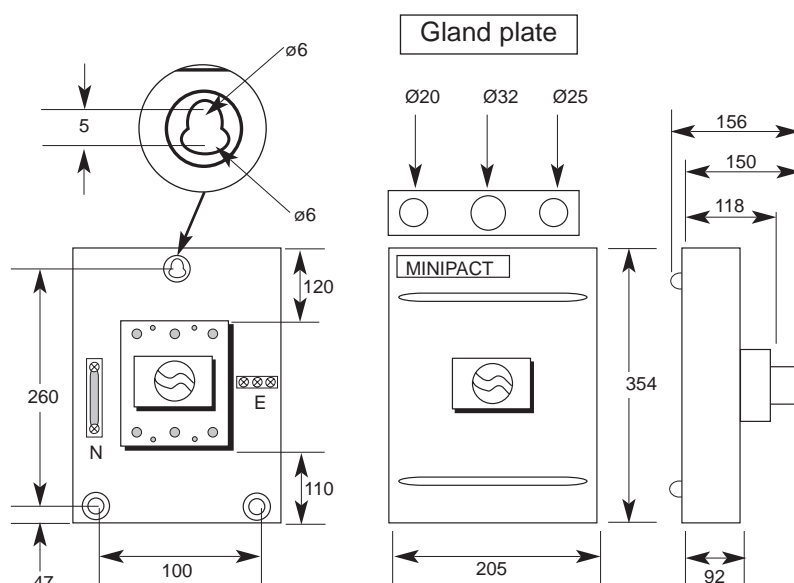
Safepact 2 MCCB or switch disconnecter general purpose enclosure IP40 including earth leakage protection



Dimensions (mm)

		Height	Width	Cable space		Overall depth	Enclosure depth
Rating		A	B	C1	C2	D	E
Up to 100A		420	230	140	65	211	145
160A		520	230	140	165		
250A		620	230	140	265		
400A		820	356	236	256	235	169
630A							

Minipact enclosed switch disconnectors and MCCB's



Note: Dimensions apply to all Minipact products.