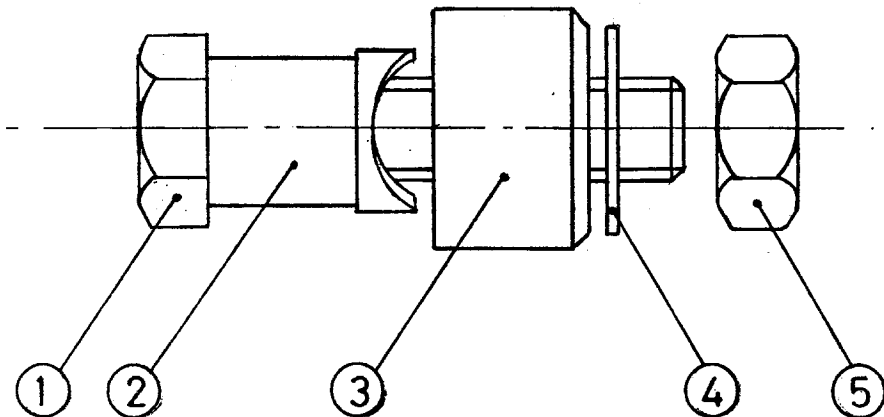


DRG. No. 970-0010

PART No.



QUANTITY OFF

ITEM N°	PART N°	DESCRIPTION	MATERIAL	N° OFF
①	STD	M8x1.25x40 H.T. SET SCREW <small>LONG. HEXAGON HEAD.</small>	STEEL	1
②	M912/5-1	PUNCH	EN1A. NON LEADED	1
③	M912/5-2	DIE	EN1A. NON LEADED	1
④	STD	M8 WASHER FORM 'B'	MS	1
⑤	STD	M8 x 1.25 NUT	MS	1

ALL PARTS TO BE CHEMICALLY BLACK.
APPROX. WEIGHT 100 GRMS.

Ø 12.5mm HOLECUTTER.

GENERAL TOLERANCE:- ± / mm.
(UNLESS STATED)
(± / ").

ALTERATIONS AND NOTES

DO NOT SCALE

DATE CHANGE NOTE No. ISSUE
5-10-90 1011 2



Sheet 1 of 2

SCALE:- 2:1

ISSUE:-

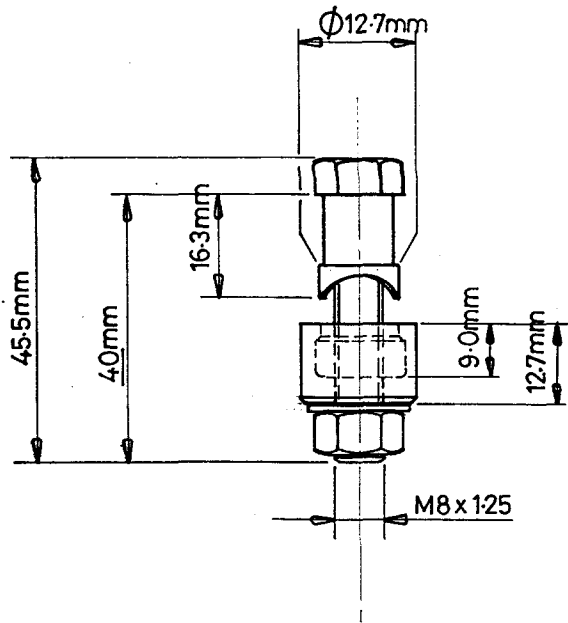
DATE 7-6-89

DRAWN J.R.K

MATERIAL

DRG. No. 970-0010
PART No.

DRG. No. 970-0010
PART .o.



Ø12.5mm HOLE CUTTER.



CAUSER GRAPHIC 3009/86 (8/87)

FUTTERS(LONDON)LTD

ALTERATIONS AND NOTES

DO NOT SCALE

DATE CHANGE NOTE No ISSUE
5.10.90. - 1.

SCALE:- —

Sheet 2 of 2.

©FUTTERS LONDON LTD

from whom
permission must first be
obtained before any
article is produced from or
copy made of this drawing

DATE
5.10.90.

DRAWN

LEM

MATERIAL

GENERAL TOLERANCE:- ± / mm.
(UNLESS STATED)
(± / ").

DRG. No. 970-0010
PART No.