

Datasheet

RS PRO service grade tool for crimping type D and E turned, pin and socket connectors 0.14 - 2.5 mm².

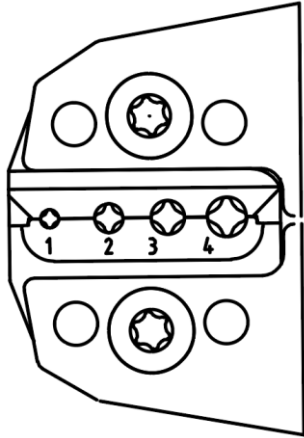
Stock No: 2080637



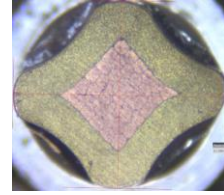
Features & Benefits:

- Four crimp nests for precision crimping
- Adjustable locator for male and female contacts
- High strength, through hardened alloy steel construction
- Versatile and easy to customize for right hand or left hand users
- Full cycle crimp mechanism to ensure consistent, reliable crimp
- Ratchet release mechanism to clear miss-crimps and obstructions
- Precision eccentric adjustment for consistent performance and ability to calibrate
- Each tool has a unique serial number for traceability

Crimp Die Set



Crimp Profile



TECHNICAL DATA

Length: 198 mm/7.8"

Width: 43 mm/1.69"

Height: 59 mm/2.32"

Weight: 369 gr/0.81 lb

Wire size: 0.14-2.5 mm² / AWG 26-AWG 14

Crimp nest dimensions mm/mm²:

0.14 - 0.37 mm², 0.14 - 1.0 mm², 1.5 mm², 2.5 mm²

Crimp dimensions inch/AWG:

AWG 26 - AWG 22/AWG 26 - AWG 18/AWG 16 / AWG 14

Connector: Turned/machined contacts

Description: Type D and E pins and sockets

Life span, cycles: 50,000