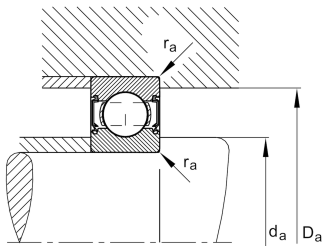
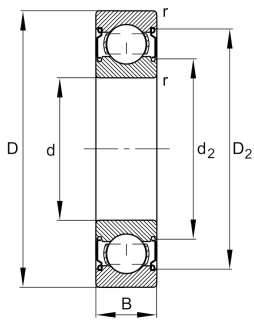


**FAG****6311-C-Z-C3**

Deep groove ball bearing

Deep groove ball bearing 63.-C-Z, single row, Generation C, shield, steel sheet metal cage

Technical information



Your current product variant

| | | |
|----------------------------------|--------------|---|
| Changed internal design | C | GenerationC |
| Sealing | Z | Non-contact shield on one Side |
| Cage | JN | Steel sheet metal |
| Tolerance class | P6 | Class6 (P6), better than PN |
| Dimensional / heat stabilization | S0 | Rings dimensional stabilized up to 150° |
| Lubricant | Without | Bearing not greased |
| Radial internal clearance | C3 (Group 3) | Internal clearance larger than CN |
| Bore type | Z | Cylindrical |

Main Dimensions & Performance Data

| | | |
|-----------------|-------------|-----------------------------------|
| d | 55 mm | Bore diameter |
| D | 120 mm | Outside diameter |
| B | 29 mm | Width |
| C _r | 83,000 N | Basic dynamic load rating, radial |
| C _{0r} | 47,500 N | Basic static load rating, radial |
| C _{ur} | 3,300 N | Fatigue load limit, radial |
| n _G | 8,500 1/min | Limiting speed |
| n _{gr} | 7,800 1/min | Reference speed |
| ≈m | 1.311 kg | Weight |



Mounting dimensions

| | | |
|---------|--------|--------------------------------------|
| d a min | 66 mm | Minimum diameter shaft shoulder |
| D a max | 109 mm | Maximum diameter of housing shoulder |
| r a max | 2 mm | Maximum fillet radius |

Dimensions

| | | |
|-------|-----------|------------------------------|
| r min | 2 mm | Minimum chamfer dimension |
| D 1 | 102.15 mm | Shoulder diameter outer ring |
| D 2 | 105.3 mm | Caliber diameter outer ring |
| d 1 | 74.7 mm | Shoulder diameter inner ring |
| d 2 | 72.54 mm | Caliber diameter inner ring |

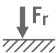





Temperature range

| | | |
|-------|--------|----------------------------|
| T min | -30 °C | Operating temperature min. |
| T max | 150 °C | Operating temperature max. |

Calculation factors

| | | |
|-----|------|--------------------|
| f 0 | 12.9 | Calculation factor |
|-----|------|--------------------|

Characteristics

| | |
|---|------------------------------|
|  | Radial load |
|  | Axial load in one direction |
|  | Axial load in two directions |
|  | Grease Lubrication |
|  | Oil Lubrication |
|  | Sealed on one side |