

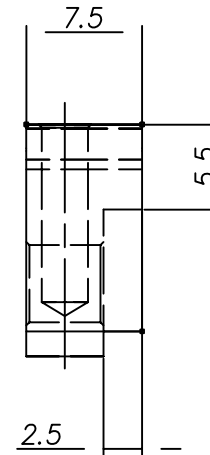
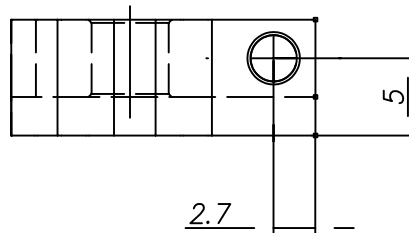
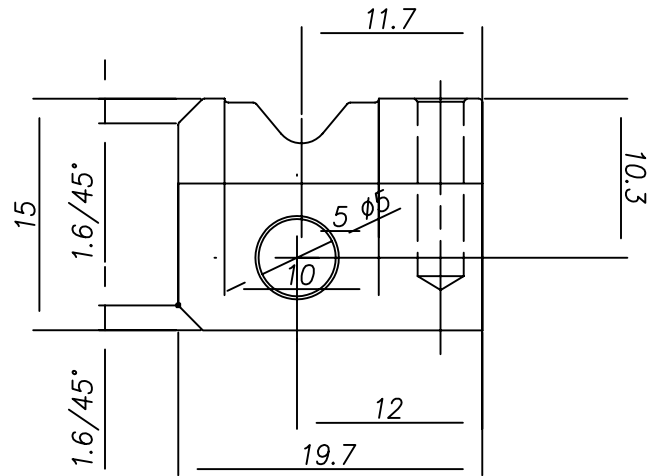
B

A

REV. 7/3/03

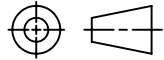
2

1



DATE	REV.	ECN	APP'D BY

PART NUMBER	2980032-01

THIRD ANGLE PROJECTION		Bel Stewart Connector	
		11118 Susquehanna Trail South Glen Rock, PA 17327-9199 (717) 235-7512 Fax: (717) 235-7954 http://www.stewartconnector.com	
DO NOT SCALE DRAWING		TITLE:	
DRAWING IS SUBJECT TO CHANGE WITHOUT NOTICE		Ferrule Die-Set 2980032-01	
SHEET NO. 1 OF 2		THIS DRAWING AND THE SUBJECT MATTER SHOWN THEREON ARE CONFIDENTIAL AND THE PROPRIETARY PROPERTY OF BEL STEWART CONNECTOR AND SHALL NOT BE REPRODUCED, COPIED, OR USED IN ANY MANNER WITHOUT PRIOR WRITTEN CONSENT OF BEL STEWART CONNECTOR. THE SUBJECT MATTER MAY BE PATENTED OR A PATENT MAY BE PENDING.	
		DRN BY: SF DATE 01-24-07	
		APPD BY: DATE	
		DWG. NO. REV.	

B

A

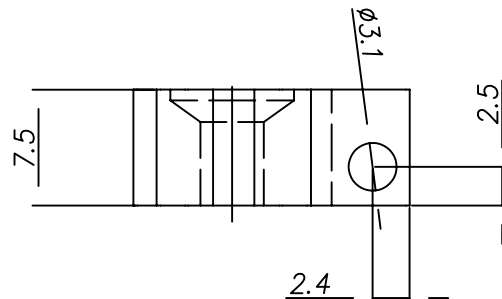
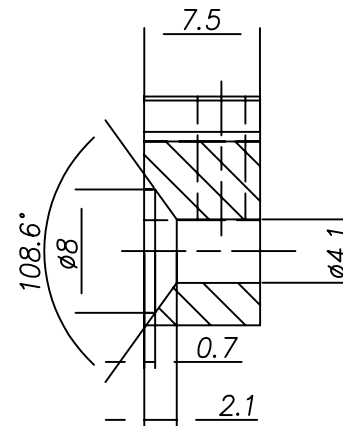
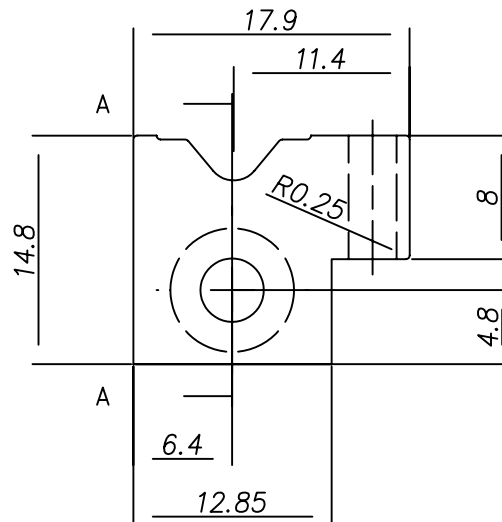
2

1

2

1

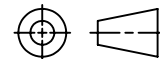
DATE	REV.	ECN	APP'D BY



PART NUMBER

2980032-01

THIRD ANGLE PROJECTION



DO NOT SCALE DRAWING

DRAWING IS SUBJECT TO
CHANGE WITHOUT NOTICESHEET NO.
2 OF 2**Bel Stewart Connector**11118 Susquehanna Trail South
Glen Rock, PA 17327-9199
(717) 235-7512 Fax: (717) 235-7954 <http://www.stewartconnector.com>TITLE:
Ferrule Die-Set 2980032-01THIS DRAWING AND THE SUBJECT MATTER SHOWN THEREON
ARE CONFIDENTIAL AND THE PROPRIETARY PROPERTY OF
BEL STEWART CONNECTOR AND SHALL NOT BE REPRODUCED,
COPIED, OR USED IN ANY MANNER WITHOUT PRIOR WRITTEN
CONSENT OF BEL STEWART CONNECTOR. THE SUBJECT
MATTER MAY BE PATENTED OR A PATENT MAY BE PENDING.

DRN BY: SF	DATE 01-24-07
APPD BY:	DATE
DWG. NO.	REV.

B

B

A

A

REV. 7/3/03

2

1