
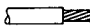

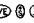



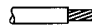

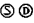



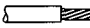




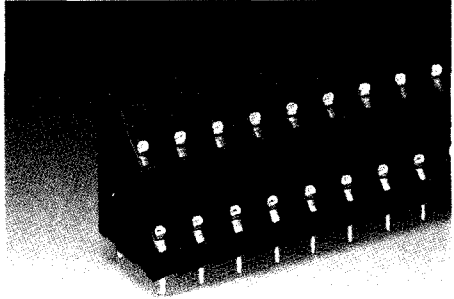
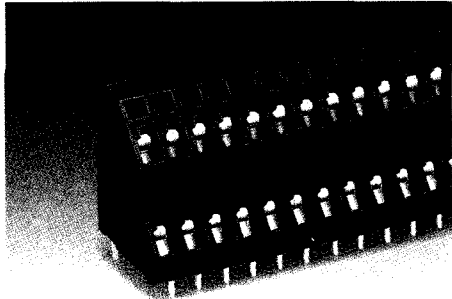
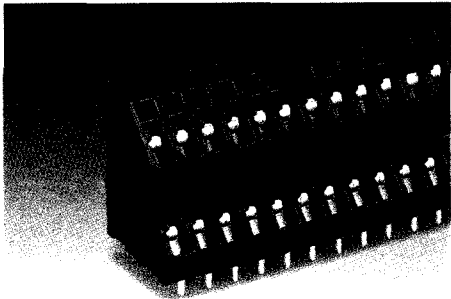


4 PCB Double Deck Terminal Strips, Pin Spacings 5.08 mm / 0.2 in; 7.62 mm / 0.3 in and 10.16 mm / 0.4 in, Series 736




26 Front-entry

<p>Pin spacing 5.08 mm / 0.2 in 0.08 – 2.5 mm² AWG 28 – 12 250 V/4 kV/3⓪, 12 A 300 V, 10 A  500 V/4 kV/2⓪, 12 A</p> <p> 5 – 6 mm / 0.22 in</p> <p>*    </p>	<p>Pin spacing 5.08 mm / 0.2 in 0.08 – 2.5 mm² AWG 28 – 12 250 V/4 kV/3⓪, 12 A 300 V, 10 A  500 V/4 kV/2⓪, 12 A</p> <p> 5 – 6 mm / 0.22 in</p> <p>*    </p>	<p>Pin spacing 7.62 mm / 0.3 in 0.08 – 2.5 mm² AWG 28 – 12 400 V/6 kV/3⓪, 12 A 300 V, 10 A  800 V/6 kV/2⓪, 12 A</p> <p> 5 – 6 mm / 0.22 in</p> <p>*    </p>
---	---	---



No. of poles	Item-No.	Pack.-unit pcs	No. of poles	Item-No.	Pack.-unit pcs	No. of poles	Item-No.	Pack.-unit pcs
Double deck terminal strips, orange 2 solder pins in line			Double deck terminal strips, orange 2 solder pins staggered by half the pin spacing			Double deck terminal strips, orange 2 solder pins in line		
2 x 2	736-302		2 x 2	736-402		2 x 2	736-602	
3 x 2	736-303		3 x 2	736-403		3 x 2	736-603	
4 x 2	736-304		4 x 2	736-404		4 x 2	736-604	
6 x 2	736-306		6 x 2	736-406		6 x 2	736-606	
8 x 2	736-308		8 x 2	736-408		8 x 2	736-608	
12 x 2	736-312		12 x 2	736-412		12 x 2	736-612	
16 x 2	736-316		16 x 2	736-416		16 x 2	736-616	
24 x 2	736-324		24 x 2	736-424		16 x 2	736-616	
Other lengths – contact factory			Other lengths – contact factory			Other lengths – contact factory		

Accessories

<p> Marker cards, computer marked</p> <p>20 self-adhesive strips/ card</p> <p>1 – 16 (40 x) 249-166 1 card</p> <p>17 – 32 (40 x) 249-167 1 card</p> <p>33 – 48 (40 x) 249-168 1 card</p> <p>1 – 32 (20 x) 249-169 1 card</p> <p>Direct printing contact factory</p>	<p> Marker cards, computer marked</p> <p>20 self-adhesive strips/ card</p> <p>1 – 16 (40 x) 249-166 1 card</p> <p>17 – 32 (40 x) 249-167 1 card</p> <p>33 – 48 (40 x) 249-168 1 card</p> <p>1 – 32 (20 x) 249-169 1 card</p> <p>Direct printing contact factory</p>	<p> Marker card, computer marked</p> <p>20 self-adhesive strips/ card</p> <p>1 – 20 (20 x) 249-173 1 card</p> <p>Direct printing contact factory</p>
---	---	---

Dimensions (in mm) Diameter of drilled hole: 1.3^{+0.1} mm

Solder pins in line

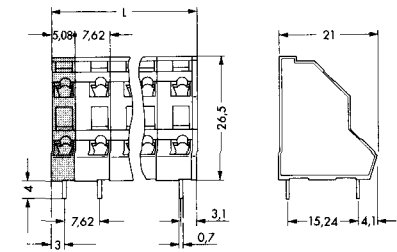
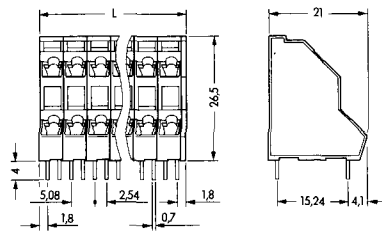
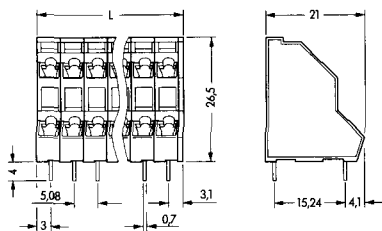
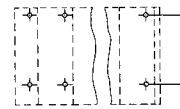
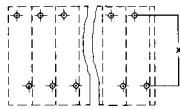
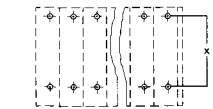
①. x) Voltage rating between adjacent poles
 400 V/6 kV/3
 800 V/6 kV/2

Solder pins staggered by half the pin spacing

①. x) Voltage rating between adjacent poles
 400 V/6 kV/3
 800 V/6 kV/2

Solder pins in line

①. x) Voltage rating between adjacent poles
 400 V/6 kV/3
 800 V/6 kV/2



$$L = (\text{No. of poles} \times \text{pin spacing}) + 1 \text{ mm}$$

$$L = (\text{No. of poles} \times \text{pin spacing}) + 1 \text{ mm}$$

$$L = (\text{No. of poles} - 1) \times \text{pin spacing} + 5.08 \text{ mm} + 1 \text{ mm}$$

* For international approvals (with corresponding ratings) see pages 10.3 – 10.38.